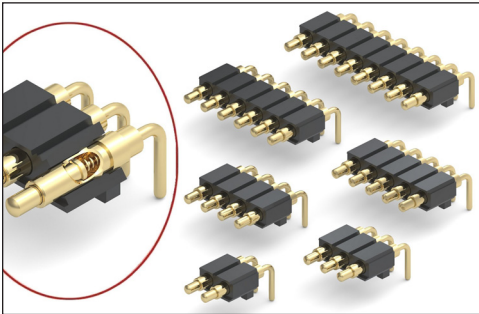


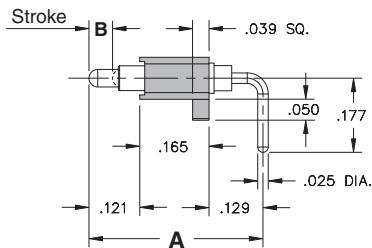
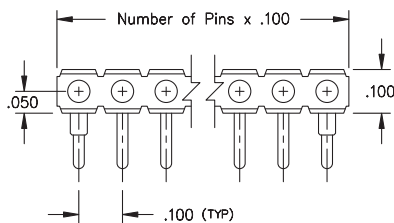
# SPRING-LOADED CONNECTORS

## SERIES 829 • .100" GRID RIGHT ANGLE MOUNT • SINGLE ROW STRIPS

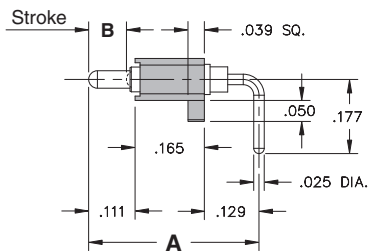


- Modular contacts for use on .100" grid. Supplied in single row strips with mounting pegs for support
- Precision-machined piston / base and gold-plated components assure up to 1,000,000 cycle life durability
- Low resistance, high current contacts are rated at 2 amps continuous, 3 amps peak
- High temperature thermoplastic insulators are suitable for wave and reflow processes
- 829 series contact strips are designed for manual placement into  $\varnothing .032 \pm .003$ " plated through-holes in the circuit board prior to wave or reflow soldering

### SINGLE ROW Series 829

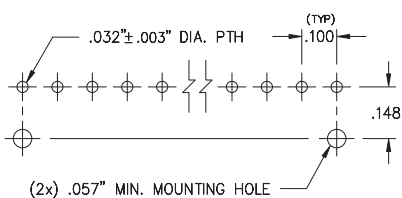


Contact style 1 only



Contact style 2 only

### Suggested P.C.B Footprint



## ORDERING INFORMATION

### Single Row Series 829

829-22-0XX-20-00X101

Specify number of contacts 01-20      Specify contact style 1 or 2

CONTACT STYLE	INITIAL LENGTH A	MAX. STROKE B
1	.415	.055
2	.406	.090

### Technical Specifications

#### Materials:

Contact piston & base: Machined copper alloy plated 20 $\mu$ " gold over 100 $\mu$ " nickel  
 Spring: Beryllium copper-plated 10 $\mu$ " gold  
 Insulator: High temperature thermoplastic, rated UL94 V-0

#### Mechanical:

Spring force @ initial length (A): 25 grams  
 Spring force @ mid stroke (B/2): 60 grams  
 Durability: Up to 1,000,000 cycles

#### Electrical:

Voltage rating: 100Vrms/150Vdc  
 Current rating: 2A (continuous), 3A (peak) per contact  
 Contact resistance: 20m $\Omega$  max.  
 Insulation resistance: 10,000M $\Omega$  min.  
 Dielectric strength: 700Vrms min.  
 Capacitance: 1pF max.

RoHS-2  
2011/65/EU



# Mouser Electronics

Authorized Distributor

Click to View Pricing, Inventory, Delivery & Lifecycle Information:

## Mill-Max:

[829-22-001-20-001101](#) [829-22-002-20-001101](#) [829-22-003-20-001101](#) [829-22-004-20-001101](#) [829-22-005-20-001101](#) [829-22-006-20-001101](#) [829-22-007-20-001101](#) [829-22-008-20-001101](#) [829-22-009-20-001101](#) [829-22-010-20-001101](#) [829-22-020-20-002101](#) [829-22-017-20-002101](#) [829-22-016-20-002101](#) [829-22-015-20-002101](#) [829-22-012-20-002101](#) [829-22-009-20-002101](#) [829-22-014-20-002101](#) [829-22-011-20-002101](#) [829-22-013-20-002101](#) [829-22-019-20-002101](#) [829-22-018-20-002101](#)