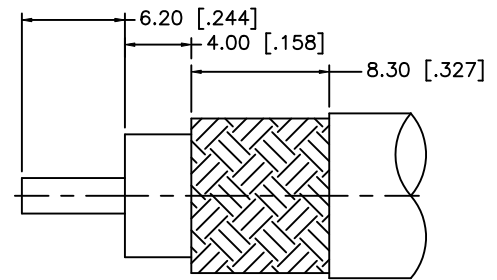
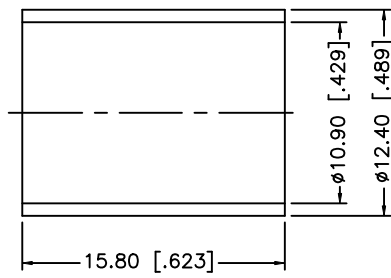
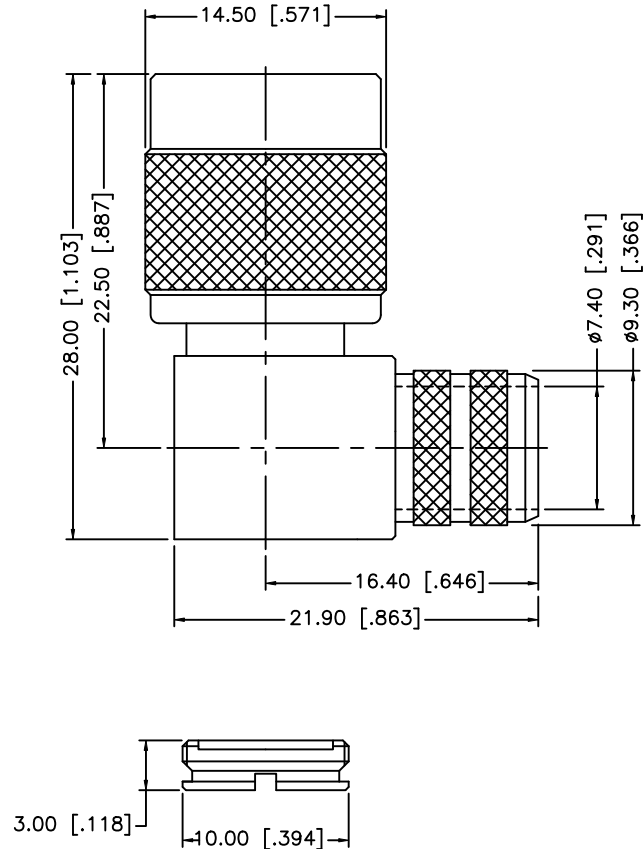


| REV. | DATE     | ECR NO. | DESCRIPTION                                   |
|------|----------|---------|---|
| A    | 04/05/03 | -       | UPDATE DRAWING FORMAT                         |
| B    | 08/04/08 | -       | REVISE PART DESCRIPTION FROM "JACK" TO "PLUG" |



RECOMMENDED  
CABLE STRIPPING DIM'S

|   |              |          |         |     |
|---|--------------|----------|---------|-----|
| 8 |              |          |         |     |
| 7 |              |          |         |     |
| 6 | COVER        | BRASS    | NICKEL  | 1   |
| 5 | FERRULE      | COPPER   | NICKEL  | 1   |
| 4 | GASKET       | RUBBER   | RED     | 1   |
| 3 | CONTACT PIN  | BRASS    | GOLD    | 1   |
| 2 | INSULATOR    | PTFE     | NATURAL | 1   |
| 1 | HOUSING/BODY | BRASS    | NICKEL  | 1   |
|   | DESCRIPTION  | MATERIAL | FINISH  | QTY |

UNLESS OTHERWISE SPECIFIED DIMENSIONS ARE IN MILLIMETERS. DIMENSIONS IN [ ] ARE IN INCHES AND FOR CUSTOMER REFERENCE ONLY.

UNLESS OTHERWISE SPECIFIED TOLERANCES FOR MILLIMETERS ARE:  
0.5 - 8mm ± 0.20mm  
8 - 30mm ± 0.40mm  
30 - 120mm ± 0.50mm

UNLESS OTHERWISE SPECIFIED TOLERANCES FOR INCHES ARE:  
.020 - .315 = ± 0.007"  
.315 - 1.180 = ± 0.015"  
1.180 - 4.724 = ± 0.020"

DO NOT SCALE DRAWING

| APPROVALS |                   | DATE     |
|-----------|-------------------|----------|
| DRAWN     | GRS               | 08/04/08 |
| CHECKED   |                   |          |
| ISSUED    |                   |          |
| SHEET     | 1 OF 1            |          |
| CAD FILE  | C:/122/122416.DWG |          |

**Amphenol Connex**

PART DESCRIPTION  
**TNC R/A CRIMP PLUG - LMR 400 CABLE  
(FOR BELDEN 9913, 9914)**

PART NO. **122416**

|          |            |      |   |      |   |       |    |
|----------|------------|------|---|------|---|-------|----|
| DWG. NO. | 122416.DWG | REV. | B | SIZE | A | SCALE | NA |
|----------|------------|------|---|------|---|-------|----|

# Mouser Electronics

Authorized Distributor

Click to View Pricing, Inventory, Delivery & Lifecycle Information:

[Amphenol:](#)

[122416](#)