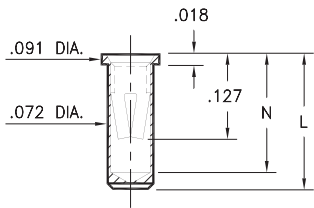


PIN RECEPTACLES

FOR .032" - .046" DIAMETER PINS

0327/0351/0373

03XX-0-15-XX-34-XX-10-0
Solder mount in .075 min. mounting hole
Also available on 12mm or 24mm wide carrier tape: See chart for details
See page 194.11 for Tape & Reel details



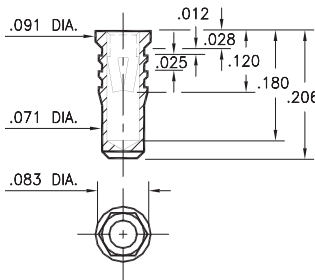
Basic Part Number	Length L	Depth N
0327-0	.206	.180
0351-0	.226	.200
0373-0	.270	.241

T&R Packaging

Basic Part Number	Tape Width	Parts per 13" Reel
0327-0	12mm	1,400
0351-0	24mm	1,100
0373-0	24mm	1,000

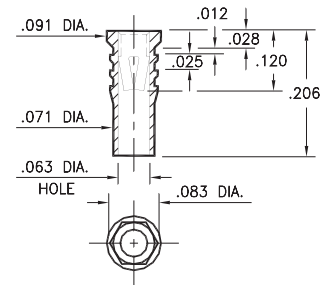
0328

0328-0-15-XX-34-XX-10-0
Hex press-fit in .079 plated through-hole



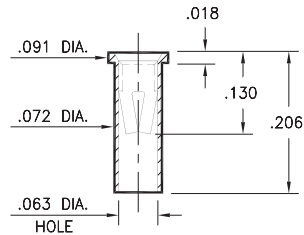
0334

0334-0-15-XX-34-XX-10-0
Hex press-fit in .079 plated through-hole



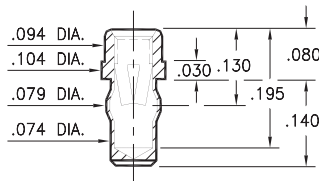
0312

0312-0-15-XX-34-XX-10-0
Solder mount in .075 min. mounting hole
Also available on 12mm wide carrier tape: 1,400 parts per 13" reel
See page 194.11 for Tape & Reel details



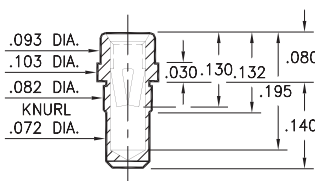
0333

0333-0-42-XX-34-XX-10-0
Press-fit in .076 mounting hole



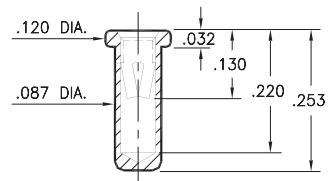
0357

0357-0-15-XX-34-XX-10-0
Press-fit in .078 mounting hole



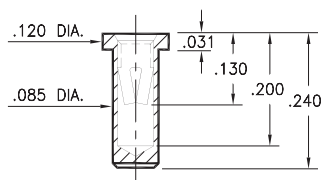
0317

0317-0-15-XX-34-XX-04-0
Solder mount in .091 min. mounting hole



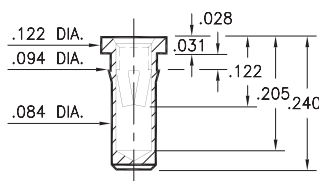
0340

0340-0-15-XX-34-XX-10-0
Solder mount in .087 min. mounting hole
Also available on 24mm wide carrier tape: 1,250 parts per 13" reel
See page 194.11 for Tape & Reel details



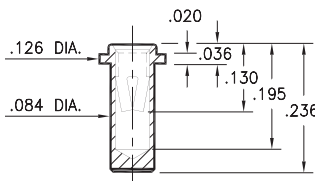
0345

0345-0-15-XX-34-XX-10-0
Press-fit in .089 mounting hole



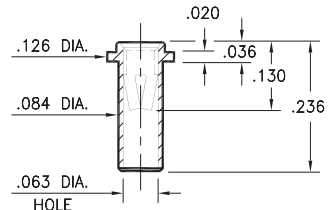
0316

0316-0-15-XX-34-XX-10-0
Solder mount in .087 min. mounting hole



0314

0314-0-15-XX-34-XX-10-0
Solder mount in .087 min. mounting hole



SPECIFICATIONS:

Shell Material: Brass Alloy 360, 1/2 Hard

Contact Material: Beryllium Copper Alloy 172, HT

Dimensions: Inches

Tolerances On: Lengths: ±.005

Diameters: ±.002

Angles: ± 2°



ORDER CODE: XXXX - X - XX - XX - 34 - XX - 10 - 0

BASIC PART #

SPECIFY SHELL FINISH:

01 200 μ" TIN/LEAD OVER NICKEL

◆ 80 200 μ" TIN OVER NICKEL (RoHS)

◆ 15 10 μ" GOLD OVER NICKEL (RoHS)

SPECIFY CONTACT FINISH:

01 200 μ" TIN/LEAD OVER NICKEL

◆ 80 200 μ" TIN OVER NICKEL (RoHS)

◆ 27 30 μ" GOLD OVER NICKEL (RoHS)

SELECT CONTACT:

#34 CONTACT (DATA ON PAGE 258)

(For alternate contact choices, see group E on page 248)



Mouser Electronics

Authorized Distributor

Click to View Pricing, Inventory, Delivery & Lifecycle Information:

Mill-Max:

[0373-0-15-80-34-80-10-0](#) [0373-0-15-80-34-27-10-0](#) [0357-0-15-80-34-80-10-0](#) [0357-0-15-80-34-27-10-0](#) [0351-0-15-80-34-80-10-0](#) [0351-0-15-80-34-27-10-0](#) [0345-0-15-80-34-80-10-0](#) [0345-0-15-80-34-27-10-0](#) [0340-0-15-80-34-80-10-0](#) [0340-0-15-80-34-27-10-0](#) [0334-0-15-80-34-80-10-0](#) [0334-0-15-80-34-27-10-0](#) [0333-0-42-80-34-80-10-0](#) [0333-0-42-80-34-27-10-0](#) [0328-0-15-80-34-80-10-0](#) [0328-0-15-80-34-27-10-0](#) [0327-0-15-80-34-80-10-0](#) [0327-0-15-80-34-27-10-0](#) [0317-0-15-80-34-80-10-0](#) [0317-0-15-80-34-27-10-0](#) [0316-0-15-80-34-27-10-0](#) [0314-0-15-80-34-80-10-0](#) [0314-0-15-80-34-27-10-0](#) [0312-0-15-80-34-27-10-0](#) [0314-0-15-15-34-27-10-0](#) [0328-0-15-15-34-27-10-0](#) [0316-0-15-15-34-27-10-0](#) [0327-0-15-15-34-27-10-0](#) [0317-0-15-15-34-27-10-0](#) [0314-0-15-01-34-01-10-0](#) [0314-0-15-01-34-14-10-0](#) [0314-0-15-01-34-27-10-0](#) [0357-0-15-01-34-27-10-0](#) [0333-0-42-01-34-27-10-0](#) [0312-0-15-01-34-01-10-0](#) [0317-0-15-01-34-01-10-0](#) [0317-0-15-01-34-27-10-0](#) [0317-0-15-01-34-14-10-0](#) [0316-0-15-01-34-27-10-0](#) [0327-0-15-01-34-27-10-0](#) [0328-0-15-01-34-27-10-0](#) [0328-0-15-01-34-01-10-0](#) [0373-0-15-01-34-27-10-0](#) [0345-0-15-15-34-27-10-0](#) [0373-0-15-01-34-01-10-0](#) [0357-0-15-01-34-01-10-0](#) [0351-0-15-01-34-01-10-0](#) [0351-0-15-01-34-27-10-0](#) [0345-0-15-01-34-01-10-0](#) [0345-0-15-01-34-27-10-0](#) [0340-0-15-01-34-01-10-0](#) [0340-0-15-01-34-27-10-0](#) [0334-0-15-01-34-01-10-0](#) [0334-0-15-01-34-27-10-0](#) [0333-0-42-01-34-01-10-0](#) [0327-0-15-01-34-01-10-0](#) [0327-0-15-01-34-14-10-0](#) [0316-0-15-01-34-01-10-0](#) [0357-0-15-15-34-27-10-0](#) [0312-0-15-15-34-27-10-0](#) [0314-0-15-00-00-00-10-0](#) [0327-0-15-00-00-00-10-0](#) [0328-0-15-00-00-00-10-0](#) [0334-0-15-00-00-00-10-0](#) [0340-0-15-15-34-27-10-0](#) [0345-0-15-00-00-00-10-0](#) [0351-0-15-15-34-27-10-0](#) [0357-0-15-00-00-00-10-0](#) [0373-0-15-15-34-27-10-0](#) [0314-0-15-15-24-27-10-0](#) [0314-0-15-01-34-35-10-0](#) [0334-0-15-01-34-14-10-0](#) [0373-0-15-80-34-14-10-0](#) [0327-0-15-80-34-14-10-0](#) [0312-0-15-01-34-14-10-0](#) [0351-0-15-80-34-14-10-0](#) [0333-0-42-01-34-14-10-0](#) [0340-0-15-01-34-14-10-0](#) [0357-0-15-01-34-14-10-0](#) [0345-0-15-01-34-14-10-0](#) [0345-0-15-80-34-14-10-0](#) [0316-0-15-80-34-14-10-0](#) [0317-0-15-80-34-14-10-0](#) [0314-0-15-80-34-14-10-0](#) [0316-0-15-01-34-14-10-0](#) [0312-0-15-80-34-14-10-0](#) [0328-0-15-80-34-14-10-0](#) [0334-0-15-80-34-14-10-0](#) [0351-0-15-01-34-14-10-0](#) [0328-0-15-01-34-14-10-0](#) [0373-0-15-01-34-14-10-0](#) [0357-0-15-15-34-14-10-0](#) [0357-0-15-80-34-14-10-0](#) [0340-0-15-80-34-14-10-0](#) [0333-0-42-80-34-14-10-0](#) [0345-0-15-15-34-14-10-0](#) [0327-0-15-15-34-14-10-0](#)