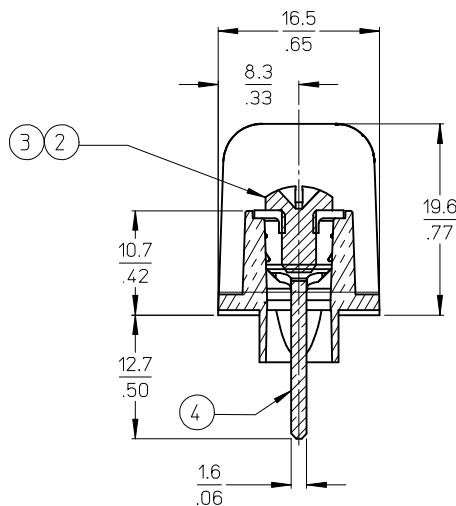
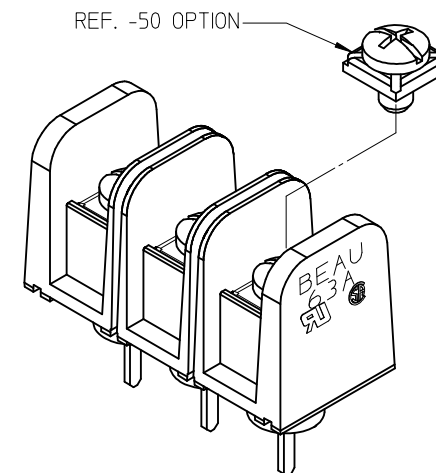


- NOTES:
1. MATERIAL: SEE TABLE
  2. FINISHES: SEE TABLE
  3. PRODUCT SPECIFICATION: NOT REQUIRED
  4. PACKAGING: NOT REQUIRED
  5. MATES WITH: NONE
  6. \*XX\* REFERS TO QTY. OF CIRCUITS
  7. ROHS COMPLIANT



| MATERIAL NUMBER (STD.) | MATERIAL NUMBER (-50) | NO. OF CIRCUITS | A            | B              |
|------------------------|-----------------------|-----------------|--------------|----------------|
| 386304802              | 386305402             | 2               | 25.9 (1.02)  | 11.13 (.438)   |
| 386304803              | 386305403             | 3               | 37.1 (1.46)  | 22.22 (.875)   |
| 386304804              | 386305404             | 4               | 48.3 (1.90)  | 33.35 (1.313)  |
| 386304805              | 386305405             | 5               | 59.2 (2.33)  | 44.45 (1.750)  |
| 386304806              | 386305406             | 6               | 70.4 (2.77)  | 55.57 (2.188)  |
| 386304807              | 386305407             | 7               | 81.5 (3.21)  | 66.67 (2.625)  |
| 386304808              | 386305408             | 8               | 92.7 (3.65)  | 77.80 (3.063)  |
| 386304809              | 386305409             | 9               | 103.6 (4.08) | 88.90 (3.500)  |
| 386304810              | 386305410             | 10              | 114.8 (4.52) | 100.03 (3.938) |
| 386304811              | 386305411             | 11              | 125.9 (4.96) | 111.13 (4.375) |
| 386304812              | 386305412             | 12              | 137.2 (5.40) | 122.25 (4.813) |
| 386304813              | 386305413             | 13              | 148.1 (5.83) | 133.35 (5.250) |
| 386304814              | 386305414             | 14              | 159.3 (6.27) | 144.45 (5.687) |
| 386304815              | 386305415             | 15              | 170.4 (6.71) | 155.58 (6.125) |
| 386304816              | 386305416             | 16              | 181.6 (7.15) | 166.70 (6.563) |



SECTION Z-Z

|      |      |  |                 |                    |
|------|------|--|-----------------|--------------------|
| 4    | XX   | TERMINAL, WIRE WRAP, LONG, #6-32,      | BRASS           | TIN PLATE          |
| 3    | XX   | SCREW/WSHR #6-32X.250 PAN, PH-SL (-50) | STEEL           | ZN, CLEAR CHROMATE |
| 2    | XX   | SCREW #6-32X.250 BHD, PH-SL (STD.)     | STEEL           | ZN, CLEAR CHROMATE |
| 1    | 1    | BARRIER TERMINAL STRIP                 | POLYESTER (PBT) | BLACK              |
| ITEM | QTY. | DESCRIPTION                            | MATERIAL        | FINISH             |

|  |                               |  |                     |  |        |          |       |       |          |       |        |          |        |       |         |       |       |               |  |  |                          |              |                      |                        |  |
|--|-------------------------------|--|---------------------|--|--------|----------|-------|-------|----------|-------|--------|----------|--------|-------|---------|-------|-------|---------------|--|--|--------------------------|--------------|----------------------|------------------------|--|
| UPDATE MAT. DESCRIP.<br>EC NO: WNA2009-0085<br>DRWN: JENC INAS 2008/11/25<br>CHKD: CYORK 2008/12/15<br>APPR: JMACNEIL 2008/12/15 | QUALITY SYMBOLS<br>▽=0<br>▽=0 | GENERAL TOLERANCES (UNLESS SPECIFIED)<br><table><tr><td></td><td>mm</td><td>INCH</td></tr><tr><td>4 PLACES</td><td>± ---</td><td>± ---</td></tr><tr><td>3 PLACES</td><td>± ---</td><td>± .005</td></tr><tr><td>2 PLACES</td><td>± 0.13</td><td>± .01</td></tr><tr><td>1 PLACE</td><td>± 0.3</td><td>± ---</td></tr><tr><td colspan="3">ANGULAR ± 2 °</td></tr></table> |                     | mm   | INCH   | 4 PLACES | ± --- | ± --- | 3 PLACES | ± --- | ± .005 | 2 PLACES | ± 0.13 | ± .01 | 1 PLACE | ± 0.3 | ± --- | ANGULAR ± 2 ° |  |  | DIMENSION STYLE<br>MM/IN | SCALE<br>2:1 | DESIGN UNITS<br>INCH | THIRD ANGLE PROJECTION | TITLE<br>11.13/.438" BTS, 600V<br>PC TAIL W/STD TURRET &<br>NO MTG ENDS (63A3XX-C) |
|  |                               |  |                     | mm   | INCH   |          |       |       |          |       |        |          |        |       |         |       |       |               |  |  |                          |              |                      |                        |  |
|  |                               |  | 4 PLACES            | ± ---  | ± ---  |          |       |       |          |       |        |          |        |       |         |       |       |               |  |  |                          |              |                      |                        |  |
|  |                               |  | 3 PLACES            | ± ---  | ± .005 |          |       |       |          |       |        |          |        |       |         |       |       |               |  |  |                          |              |                      |                        |  |
|  |                               |  | 2 PLACES            | ± 0.13   | ± .01  |          |       |       |          |       |        |          |        |       |         |       |       |               |  |  |                          |              |                      |                        |  |
| 1 PLACE  | ± 0.3                         | ± ---  |                     |  |        |          |       |       |          |       |        |          |        |       |         |       |       |               |  |  |                          |              |                      |                        |  |
| ANGULAR ± 2 °  |                               |  |                     |  |        |          |       |       |          |       |        |          |        |       |         |       |       |               |  |  |                          |              |                      |                        |  |
| DRAWN BY<br>R. STONE   | DATE<br>2003/03/25            | MOLEX MOLEX INCORPORATED   |                     |  |        |          |       |       |          |       |        |          |        |       |         |       |       |               |  |  |                          |              |                      |                        |  |
| CHECKED BY<br>R. KEMP  | DATE<br>2003/03/27            |  |                     |  |        |          |       |       |          |       |        |          |        |       |         |       |       |               |  |  |                          |              |                      |                        |  |
| APPROVED BY<br>P. WALTZ  | DATE<br>2003/03/28            |  |                     |  |        |          |       |       |          |       |        |          |        |       |         |       |       |               |  |  |                          |              |                      |                        |  |
| MATERIAL NO.   | DOCUMENT NO.                  |  | SHEET NO.<br>1 OF 1 |  |        |          |       |       |          |       |        |          |        |       |         |       |       |               |  |  |                          |              |                      |                        |  |
| DRAFT WHERE APPLICABLE MUST REMAIN WITHIN DIMENSIONS   |                               |  | SIZE<br>B           | SEE CHART<br>SD-38630-006<br>THIS DRAWING CONTAINS INFORMATION THAT IS PROPRIETARY TO MOLEX INCORPORATED AND SHOULD NOT BE USED WITHOUT WRITTEN PERMISSION |        |          |       |       |          |       |        |          |        |       |         |       |       |               |  |  |                          |              |                      |                        |  |



# Mouser Electronics

Authorized Distributor

Click to View Pricing, Inventory, Delivery & Lifecycle Information:

Molex:

38630-5416