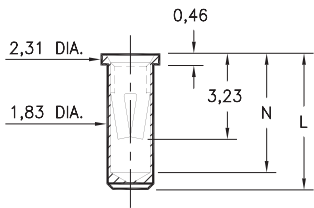


# PIN RECEPTACLES

FOR 0,81 - 1,17 DIAMETER PINS

## 0327/0351/0373

**03XX-0-15-XX-34-XX-10-0**  
Solder mount in 1,91 min. mounting hole  
Also available on 12mm or 24mm wide carrier tape: See chart for details  
See page 194.11 for Tape & Reel details



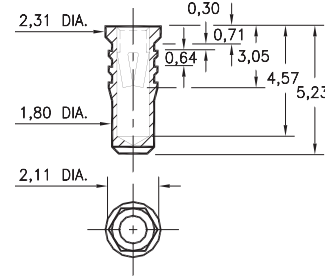
Basic Part Number	Length L	Depth N
0327-0	5,23	4,57
0351-0	5,74	5,08
0373-0	6,86	6,12

### T&R Packaging

Basic Part Number	Tape Width	Parts per 330mm Reel
0327-0	12mm	1,400
0351-0	24mm	1,100
0373-0	24mm	1,000

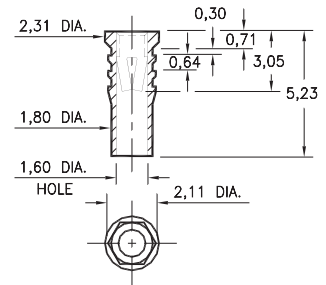
## 0328

**0328-0-15-XX-34-XX-10-0**  
Hex press-fit in 2,01 plated through-hole



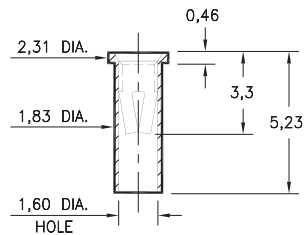
## 0334

**0334-0-15-XX-34-XX-10-0**  
Hex press-fit in 2,01 plated through-hole



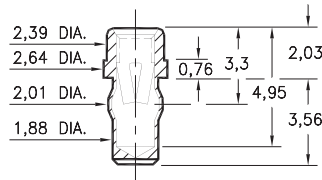
## 0312

**0312-0-15-XX-34-XX-10-0**  
Solder mount in 1,91 min. mounting hole  
Also available on 12mm or 24mm wide carrier tape: 1,400 parts per 330mm reel  
See page 194.11 for Tape & Reel details



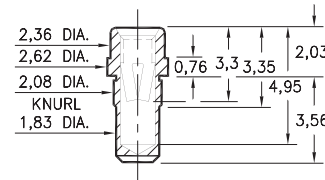
## 0333

**0333-0-42-XX-34-XX-10-0**  
Press-fit in 1,93 mounting hole



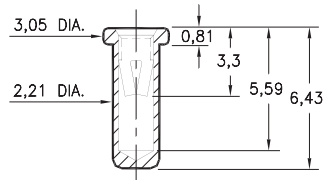
## 0357

**0357-0-15-XX-34-XX-10-0**  
Press-fit in 1,98 mounting hole



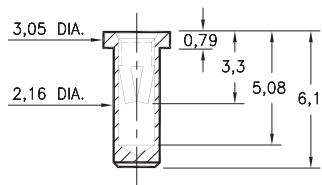
## 0317

**0317-0-15-XX-34-XX-04-0**  
Solder mount in 2,31 min. mounting hole



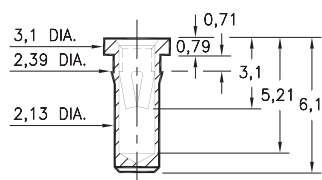
## 0340

**0340-0-15-XX-34-XX-10-0**  
Solder mount in 2,21 min. mounting hole  
Also available on 24mm wide carrier tape: 1,250 parts per 330mm reel  
See page 194.11 for Tape & Reel details



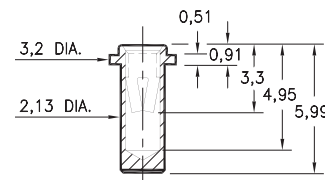
## 0345

**0345-0-15-XX-34-XX-10-0**  
Press-fit in 2,26 mounting hole



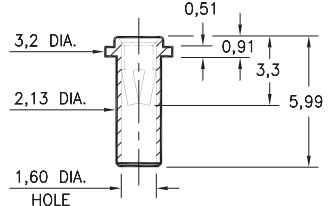
## 0316

**0316-0-15-XX-34-XX-10-0**  
Solder mount in 2,21 min. mounting hole



## 0314

**0314-0-15-XX-34-XX-10-0**  
Solder mount in 2,21 min. mounting hole



### SPECIFICATIONS:

**Shell Material:** Brass Alloy 360, 1/2 Hard

**Contact Material:** Beryllium Copper Alloy 172, HT

**Dimensions:** Millimeters

**Tolerances On:** Lengths: ± 0,13  
Diameters: ± 0,051  
Angles: ± 2°



**ORDER CODE:** XXXX - X - XX - XX - 34 - XX - 10 - 0

**BASIC PART #**

**SPECIFY SHELL FINISH:**

- 01 5,08µm TIN/LEAD OVER NICKEL
- ◆ 80 5,08µm TIN OVER NICKEL (RoHS)
- ◆ 15 0,25µm GOLD OVER NICKEL (RoHS)

**SPECIFY CONTACT FINISH:**

- 01 5,08µm TIN/LEAD OVER NICKEL
- ◆ 80 5,08µm TIN OVER NICKEL (RoHS)
- ◆ 27 0,76µm GOLD OVER NICKEL (RoHS)

**SELECT CONTACT:**

**#34 CONTACT (DATA ON PAGE 258)**

(For alternate contact choices, see group E on page 248)



# Mouser Electronics

Authorized Distributor

Click to View Pricing, Inventory, Delivery & Lifecycle Information:

[Mill-Max:](#)

[0312-0-15-01-34-27-10-0](#) [0333-0-42-15-34-27-10-0](#) [0334-0-15-15-34-27-10-0](#) [0334-0-15-15-34-14-10-0](#)