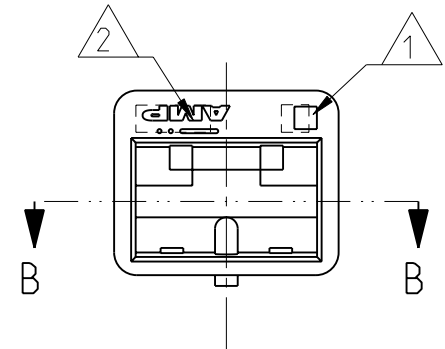
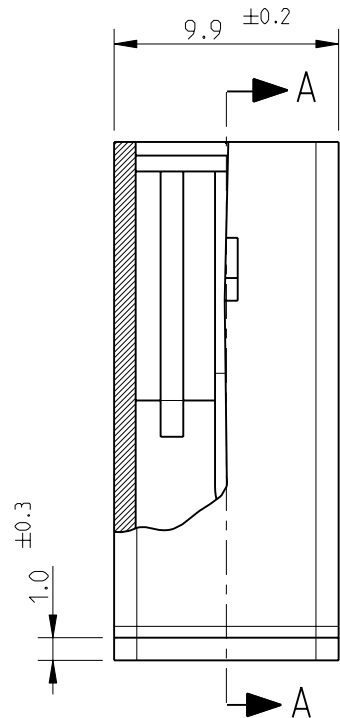


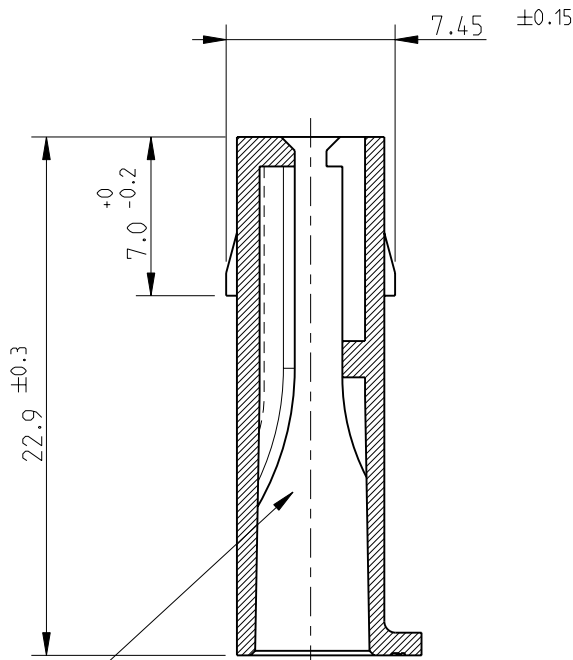
LOC	DIST	REVISIONS				
		P	LTR	DESCRIPTION	DATE	DWN APVD
1	-		AB2	ADDED P/N, ET00-0211-04	19/10/04	H.Y. G.T.
			AB3	REVISED PER ECO-09-026346	26NOV09	KK AEG
			AB4	ECR-10-022530	05FEB11	KK HMR



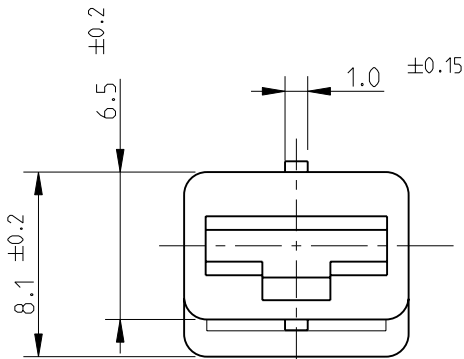
SEZ. PARZIALE B-B
PARTIAL SECT. B-B



SEZ. A-A
SECT. A-A


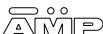


TIPICA CAVITA' PER TERMINALE AMP
FASTIN-FASTON SR.6.35mm.
(TYPICAL CAVITY FOR AMP
FASTIN-FASTON .250 SR.)



- 1


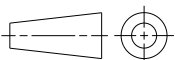
NUMERO DI IMPRONTA STAMPO
(MOULD CAVITY IDENTIFICATION NO.)
- 2

MARCHIO DI FABBRICA 
( TRADE MARK)
- 3

VERSIONE IN ACCORDO ALLA IEC 60695-2-11, IEC 60335-1 (GLOW WIRE)
(VERSION ACCORDING TO IEC 60695-2-11, IEC 60335-1, GLOW WIRE)
- 4

OBSOLETE PARTS: OBSOLETE CIS STREAMLINING PER D.RENAUD/D.SINISI

4 OBSOLETE	3	NATURALE (NATURAL)	PA6 UNFILLED	1-180905-0
		ARANCIO (ORANGE)	PA 6.6 (PA 6.6 UNFILLED)	180905-9
OBSOLETE		VIOLETTO (VIOLET)		180905-8
		GRIGIO (GRAY)		180905-7
		MARRONE (BROWN)		180905-6
		NERO (BLACK)		180905-5
		BLU (BLUE)		180905-3
		VERDE (GREEN)		180905-2
		ROSSO (RED)		180905-1
		NATURALE (NATURAL)		180905-0
NOTE		COLORE (COLOUR)	MATERIALE (MATERIAL)	NUMERO (PART NUMBER)

THIS DRAWING IS A CONTROLLED DOCUMENT.		DWN F.BORIN 22JUN98	 TE Connectivity				
		CHK C.TARTARI 22JUN98					
DIMENSIONS: mm	TOLERANCES UNLESS OTHERWISE SPECIFIED:	APVD -	NAME FASTIN-FASTON TM CONNECTOR .250 SRS. FEMALE HOUSING, 1 POS. -				
	0 PLC ±-	PRODUCT SPEC 108-20020	SIZE A3 CAGE CODE 00779 DRAWING NO C-180905			RESTRICTED TO -	
	1 PLC ±-	APPLICATION SPEC -					
	2 PLC ±-	WEIGHT -					
	3 PLC ±-						
4 PLC ±-							
MATERIAL SEE TABLE	FINISH - ±2°						
		CUSTOMER DRAWING	DISEGNO PER CLIENTE SOLO PER RIFERIMENTO		SCALE 3:1	SHEET 1 OF 1	REV AB4

Mouser Electronics

Authorized Distributor

Click to View Pricing, Inventory, Delivery & Lifecycle Information:

[TE Connectivity:](#)

[1-180905-0](#)