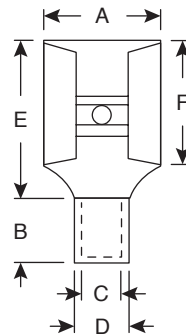
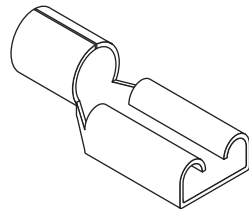


Terminals

159-1224, 159-1640, 159-1641,
159-1642, 159-2237, 159-2239A

KOBICONN

Terminals



SPECIFICATIONS

Type:	Non-Insulated Disconnects
Maximum Voltage:	300V @ 75°C
Terminal Material:	Brass

MOUSER STOCK NO.	Wire Range (AWG)	Max. Electric Current (A)	NEMA Tab	Dimensions: In.						Material Thickness
				A	B	C	D	E	F	
159-1224	12-10	24	.032 x .250	.291	.236	.134	.177	.669	.311	.016
159-1640	16-14	15	.020 x .110	.150	.167	.091	.130	.551	.252	.012
159-1641	16-14	15	.020 x .187	.220	.197	.091	.130	.551	.256	.014
159-1642	16-14	15	.020 x .205	.256	.197	.091	.130	.622	.248	.014
159-2237	22-16	10	.020 x .187	.220	.197	.067	.106	.551	.256	.014
159-2239A	22-16	10	.020 x .205	.258	.197	.067	.106	.622	.248	.014

Date Last Revised: 06-23-05

Available from Mouser Electronics
1-800-346-6873
www.mouser.com

KC-300718

159-1224, 159-1640, 159-1641, 159-1642, 159-2237, 159-2239A

Mouser Electronics

Authorized Distributor

Click to View Pricing, Inventory, Delivery & Lifecycle Information:

[Kobiconn:](#)

[159-2239A](#) [159-1642](#) [159-1641](#) [159-1640](#) [159-1224](#) [159-2237](#)