

Signal lamps with lamp socket - BA 9s (MBC/MCC), 18.2 mm, housing

1.63.018.091/0000

Please include the desired lens and LED / lamp in your order.



General information

| | |
|--------------------|-------|
| Form of lens | round |
| Diameter of collar | 22 mm |

Dimensions

| | |
|----------------|---------|
| Overall height | 14 mm |
| Mounting depth | 47 mm |
| Mounting hole | 18.2 mm |

Mechanical design

| | |
|-------------|---|
| Mounting | ring nut |
| Terminals | solder/quick connector 6.3x0.8 / 2x 2.8x0.8mm |
| Lamp socket | BA 9 s |
| Lamp | LED or filament lamp |

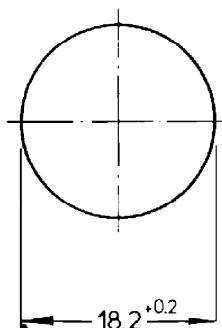
Electrical characteristics

| | |
|--------------------|-------|
| Voltage limit max. | 250 V |
| Power limit max. | 2 W |

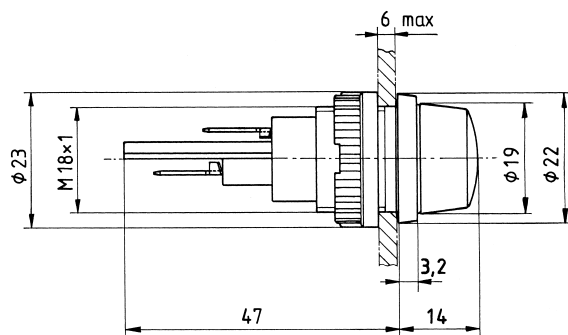
Other specifications

| | |
|--------------------------------------|---------------------|
| Degree of protection from front side | IP65 (DIN EN 60529) |
| Weight | 22 g |
| Approvals | VDE T120°C / 2 W |
| ROHS compliant | yes |
| REACH compliant | yes |

Mounting hole



Drawing with lens



Mouser Electronics

Authorized Distributor

Click to View Pricing, Inventory, Delivery & Lifecycle Information:

RAFI:

[1.63.018.091/0000](#)