

mat'l. code				surface				tolerance				projection				product family												
—				ISO 1302				ISO 406 ISO 1101								58EF												
ltr	ecn no	dr	date	tolerances unless				otherwise specified								title 0.5mm SPACING FPC CONNECTOR DOCUMENT LIST (Cat. No. : SFV__R-3/4STBE1HLF)												
A	J11-0011	S.W	2011-1-14	angles				linear																				
B	ELX-J-32839	S.W	2019-3-6																									
				dr	S.WATANABE			2019-3-6							dwg no				sheet 1 of 8				size					
				engr	S.WATANABE			2019-3-6																				
				chr	S-H.THIO			2019-3-7																				
				appd	Y.KAMEDA			2019-3-7																				
sheet index	revision sheet	B	B	B	B	B	B	B	B	B																		
		1	2	3	4	5	6	7	8																			

List of "SFV__R-3/4STBE1HLF" customer document

DOCUMENT NO.	LIST
10116954(Sheet1)	DOCUMENT LIST
10116954(Sheet2)	CAT.NO.TABLE FOR 0.5mm CONTACT SPACING CONNECTOR (SFV__R-3/4STB_HLF)
10116954(Sheet3)	CONNECTOR USED FOR FPC WITH 0.5mm CONTACT SPACING (SFV__R-3STB_HLF)
10116954(Sheet4)	CONNECTOR USED FOR FPC WITH 0.5mm CONTACT SPACING (SFV__R-4STB_HLF)
10116954(Sheet5)	CAT.NO.TABLE FOR PLASTIC TAPE PACKAGED 0.5mm CONTACT SPACING CONNECTOR (SFV__R-3/4STBE1HLF)
10116954(Sheet6)	PLASTIC TAPE PACKAGED 0.5mm CONTACT SPACING CONNECTOR (SFV__R-3STBE1HLF)
10116954(Sheet7)	PLASTIC TAPE PACKAGED 0.5mm CONTACT SPACING CONNECTOR (SFV__R-4STBE1HLF)
10116954(Sheet8)	RECOMMENDED CABLE (FPC) (SFV__R-3/4STB_HLF)
GS-12-0783	SPEC.
BJM-SFV102	HANDLING PROCEDURES

CAT. NO. & DIMENSIONS

NO. OF CONTACTS (n)	CAT. NO.	DIMENSIONS (NOTE2)			
		A ± 0.2	B ± 0.2	C ± 0.1	D ± 0.1
4	SFV 4R-3/4STB__HLF	7.5	5.9	1.5	1.6
5	SFV 5R-3/4STB__HLF	8.0	6.4	2.0	2.1
6	SFV 6R-3/4STB__HLF	8.5	6.9	2.5	2.6
7	SFV 7R-3/4STB__HLF	9.0	7.4	3.0	3.1
8	SFV 8R-3/4STB__HLF	9.5	7.9	3.5	3.6
9	SFV 9R-3/4STB__HLF	10.0	8.4	4.0	4.1
10	SFV10R-3/4STB__HLF	10.5	8.9	4.5	4.6
11	SFV11R-3/4STB__HLF	11.0	9.4	5.0	5.1
12	SFV12R-3/4STB__HLF	11.5	9.9	5.5	5.6
13	SFV13R-3/4STB__HLF	12.0	10.4	6.0	6.1
14	SFV14R-3/4STB__HLF	12.5	10.9	6.5	6.6
15	SFV15R-3/4STB__HLF	13.0	11.4	7.0	7.1
16	SFV16R-3/4STB__HLF	13.5	11.9	7.5	7.6
17	SFV17R-3/4STB__HLF	14.0	12.4	8.0	8.1
18	SFV18R-3/4STB__HLF	14.5	12.9	8.5	8.6
19	SFV19R-3/4STB__HLF	15.0	13.4	9.0	9.1
20	SFV20R-3/4STB__HLF	15.5	13.9	9.5	9.6
21	SFV21R-3/4STB__HLF	16.0	14.4	10.0	10.1
22	SFV22R-3/4STB__HLF	16.5	14.9	10.5	10.6
23	SFV23R-3/4STB__HLF	17.0	15.4	11.0	11.1
24	SFV24R-3/4STB__HLF	17.5	15.9	11.5	11.6
25	SFV25R-3/4STB__HLF	18.0	16.4	12.0	12.1
26	SFV26R-3/4STB__HLF	18.5	16.9	12.5	12.6
27	SFV27R-3/4STB__HLF	19.0	17.4	13.0	13.1
28	SFV28R-3/4STB__HLF	19.5	17.9	13.5	13.6
29	SFV29R-3/4STB__HLF	20.0	18.4	14.0	14.1
30	SFV30R-3/4STB__HLF	20.5	18.9	14.5	14.6
31	SFV31R-3/4STB__HLF	21.0	19.4	15.0	15.1
32	SFV32R-3/4STB__HLF	21.5	19.9	15.5	15.6
33	SFV33R-3/4STB__HLF	22.0	20.4	16.0	16.1
34	SFV34R-3/4STB__HLF	22.5	20.9	16.5	16.6
35	SFV35R-3/4STB__HLF	23.0	21.4	17.0	17.1

CAT. NO.

SFV (n) R - 3 ST B __ HLF

SERIES NAME

NO. OF CONTACTS

RIGHT ANGLE TYPE

FOR FPC,
WITH CABLE LOCK MECHANISM

CONTACT DIRECTION

3: LOWER CONTACT TYPE

4: UPPER CONTACT TYPE

FOR AUTOMATIC MOUNTING
(SMT)

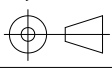

PLATING VARIATION

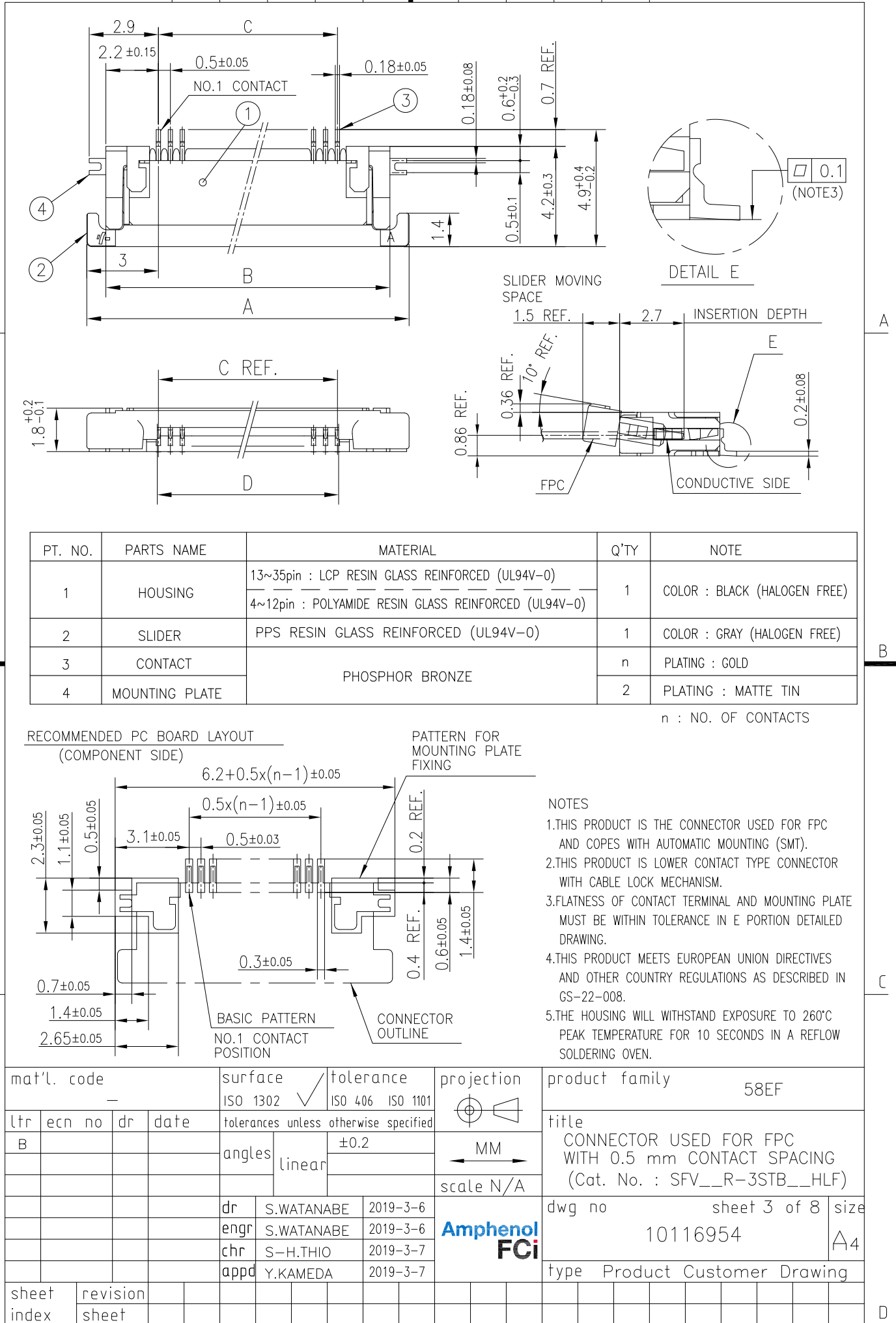
PACKAGE STYLE

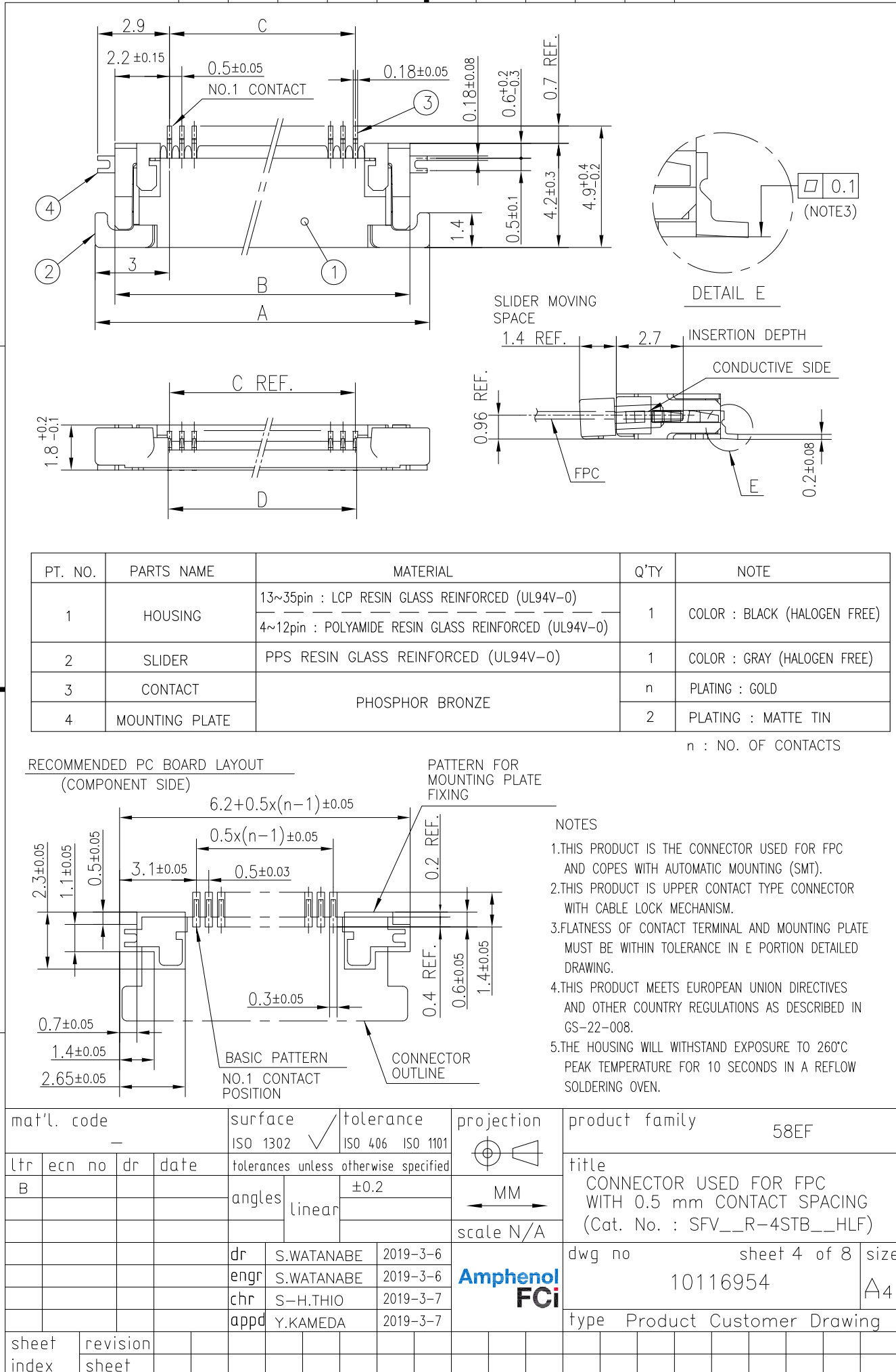
HALOGEN AND LEAD FREE

NOTES

1. THIS PRODUCT IS THE CONNECTOR USED FOR FPC AND COPES WITH AUTOMATIC MOUNTING (SMT).
2. SEE PART DRAWINGS FOR DIMENSIONS A~D.
3. THIS PRODUCT IS THE CONNECTOR WITH CABLE LOCK MECHANISM.

mat'l. code				surface ISO 1302		tolerance ISO 406 ISO 1101		projection		product family 58EF													
ltr	ecn no	dr	date	tolerances unless otherwise specified				 MM scale N/A		title CAT. NO. TABLE FOR 0.5 mm CONTACT SPACING CONNECTOR (Cat. No. : SFV__R-3/4STB__HLF)													
B				angles		linear																	
				dr	S.WATANABE	2019-3-6				dwg no 10116954 sheet 2 of 8 size A4													
				enr	S.WATANABE	2019-3-6																	
				chr	S-H.THIO	2019-3-7																	
				appd	Y.KAMEDA	2019-3-7																	
sheet index		revision sheet																					





CAT. NO. & DIMENSIONS

NO. OF CONTACTS (n)	CAT. NO.	DIMENSIONS (NOTE3)		
		F ± 5	G ± 0.3	H ± 0.1
4	SFV 4R-3/4STBE1HLF	20.4	16	—
5	SFV 5R-3/4STBE1HLF	20.4	16	—
6	SFV 6R-3/4STBE1HLF	20.4	16	—
7	SFV 7R-3/4STBE1HLF	28.4	24	—
8	SFV 8R-3/4STBE1HLF	28.4	24	—
9	SFV 9R-3/4STBE1HLF	28.4	24	—
10	SFV10R-3/4STBE1HLF	28.4	24	—
11	SFV11R-3/4STBE1HLF	28.4	24	—
12	SFV12R-3/4STBE1HLF	28.4	24	—
13	SFV13R-3/4STBE1HLF	28.4	24	—
14	SFV14R-3/4STBE1HLF	28.4	24	—
15	SFV15R-3/4STBE1HLF	28.4	24	—
16	SFV16R-3/4STBE1HLF	28.4	24	—
17	SFV17R-3/4STBE1HLF	28.4	24	—
18	SFV18R-3/4STBE1HLF	28.4	24	—
19	SFV19R-3/4STBE1HLF	28.4	24	—
20	SFV20R-3/4STBE1HLF	28.4	24	—
21	SFV21R-3/4STBE1HLF	28.4	24	—
22	SFV22R-3/4STBE1HLF	28.4	24	—
23	SFV23R-3/4STBE1HLF	36.4	32	28.4
24	SFV24R-3/4STBE1HLF	36.4	32	28.4
25	SFV25R-3/4STBE1HLF	36.4	32	28.4
26	SFV26R-3/4STBE1HLF	36.4	32	28.4
27	SFV27R-3/4STBE1HLF	36.4	32	28.4
28	SFV28R-3/4STBE1HLF	36.4	32	28.4
29	SFV29R-3/4STBE1HLF	36.4	32	28.4
30	SFV30R-3/4STBE1HLF	36.4	32	28.4
31	SFV31R-3/4STBE1HLF	48.4	44	40.4
32	SFV32R-3/4STBE1HLF	48.4	44	40.4
33	SFV33R-3/4STBE1HLF	48.4	44	40.4
34	SFV34R-3/4STBE1HLF	48.4	44	40.4
35	SFV35R-3/4STBE1HLF	48.4	44	40.4

CAT. NO. SFV (n) R - 3 ST B E1 HLF

SERIES NAME SFV

NO. OF CONTACTS (n)

RIGHT ANGLE TYPE R

FOR FPC,
WITH CABLE LOCK MECHANISM - 3

CONTACT DIRECTION ST

3: LOWER CONTACT TYPE
4: UPPER CONTACT TYPE

FOR AUTOMATIC MOUNTING B

(SMT)

PLATING VARIATION E1

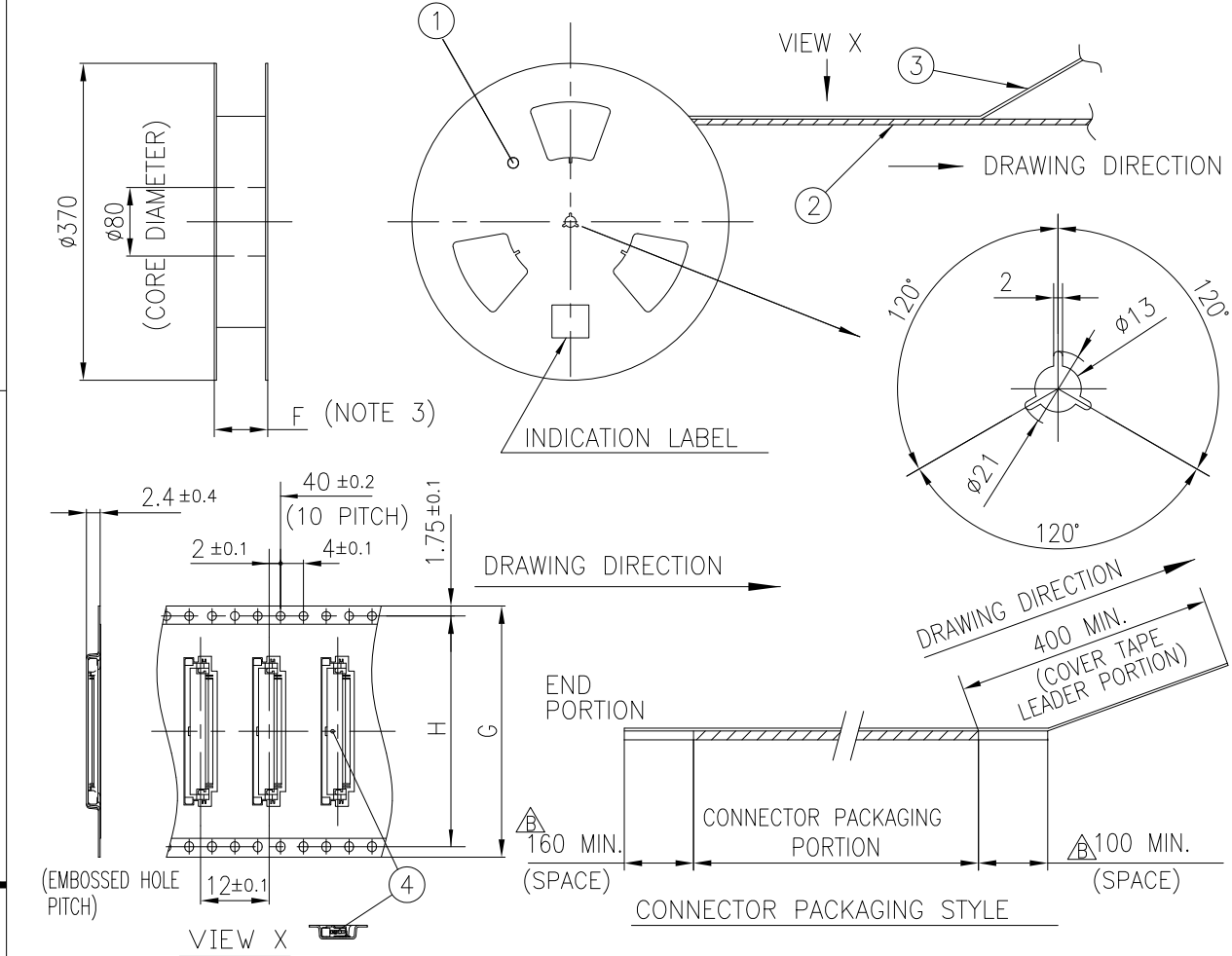
PACKAGE STYLE HLF

HALOGEN FREE AND LEAD FREE

NOTES

1. THIS PRODUCT IS THE CONNECTOR USED FOR FPC AND CYPES WITH AUTOMATIC MOUNTING (SMT).
2. THIS CATALOG NO. INDICATES PLASTIC TAPE PACKAGED
3. SEE PART DRAWINGS FOR DIMENSIONS F~H.
4. THIS PRODUCT IS THE CONNECTOR WITH CABLE LOCK MECHANISM.

mat'l. code				surface		tolerance		projection		product family											
—				ISO 1302		ISO 406 ISO 1101				58EF											
ltr	ecn no	dr	date	tolerances unless otherwise specified								title CAT. NO. TABLE FOR PLASTIC TAPE PACKAGED 0.5 mm CONTACT SPACING CONNECTOR (Cat. No. : SFV__R-3/4STBE1HLF)									
B				angles		linear		scale N/A													
				dr	S.WATANABE		2019-3-6				dwg no				sheet 5 of 8				size		
				engr	S.WATANABE		2019-3-6				10116954				A4						
				chr	S-H.THIO		2019-3-7														
				appd	Y.KAMEDA		2019-3-7														
sheet index		revision sheet																			

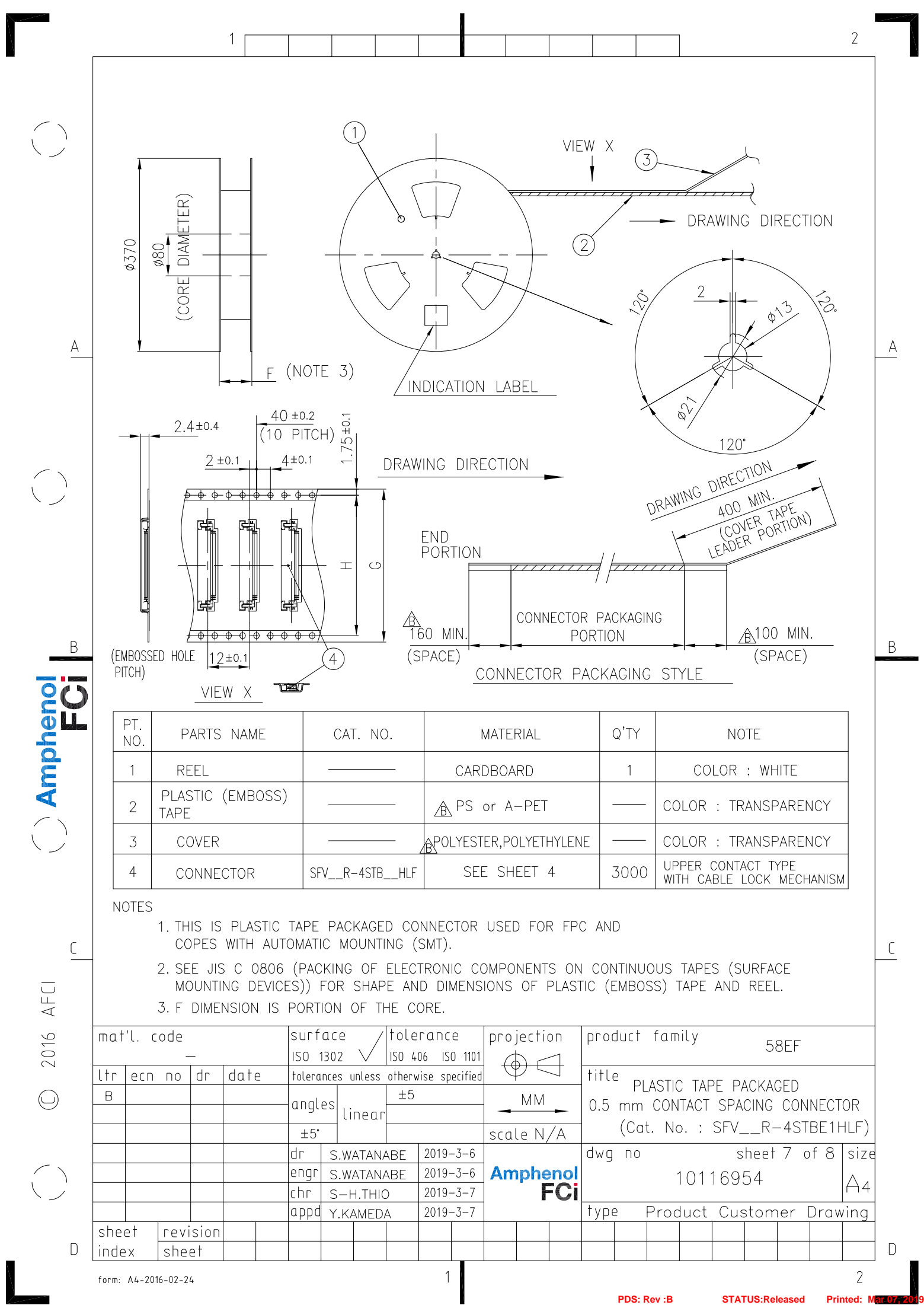


PT. NO.	PARTS NAME	CAT. NO.	MATERIAL	Q'TY	NOTE
1	REEL	_____	CARDBOARD	1	COLOR : WHITE
2	PLASTIC (EMBOSS) TAPE	_____	△ PS or A-PET	—	COLOR : TRANSPARENCY
3	COVER	_____	△ POLYESTER,POLYETHYLENE	—	COLOR : TRANSPARENCY
4	CONNECTOR	SFV__R-3STB__HLF	SEE SHEET 3	3000	LOWER CONTACT TYPE WITH CABLE LOCK MECHANISM

NOTES

- THIS IS PLASTIC TAPE PACKAGED CONNECTOR USED FOR FPC AND COPES WITH AUTOMATIC MOUNTING (SMT).
- SEE JIS C 0806 (PACKING OF ELECTRONIC COMPONENTS ON CONTINUOUS TAPES (SURFACE MOUNTING DEVICES)) FOR SHAPE AND DIMENSIONS OF PLASTIC (EMBOSS) TAPE AND REEL.
- F DIMENSION IS PORTION OF THE CORE.

mat'l. code				surface ISO 1302		tolerance ISO 406 ISO 1101		projection		product family 58EF			
—				✓				⊕		title			
ltr	ecn no	dr	date	tolerances unless otherwise specified				MM		PLASTIC TAPE PACKAGED			
B				angles				±5		0.5 mm CONTACT SPACING CONNECTOR			
				linear						(Cat. No. : SFV__R-3STBE1HLF)			
				±5°						dwg no			
				dr	S.WATANABE	2019-3-6	Amphenol FCI		sheet 6 of 8				
				engr	S.WATANABE	2019-3-6			10116954				
				chr	S-H.THIO	2019-3-7			A4				
				appd	Y.KAMEDA	2019-3-7			type Product Customer Drawing				
sheet index	revision sheet												



PT. NO.	PARTS NAME	CAT. NO.	MATERIAL	Q'TY	NOTE
1	REEL	_____	CARDBOARD	1	COLOR : WHITE
2	PLASTIC (EMBOSS) TAPE	_____	△ PS or A-PET	_____	COLOR : TRANSPARENCY
3	COVER	_____	△ POLYESTER,POLYETHYLENE	_____	COLOR : TRANSPARENCY
4	CONNECTOR	SFV__R-4STB__HLF	SEE SHEET 4	3000	UPPER CONTACT TYPE WITH CABLE LOCK MECHANISM

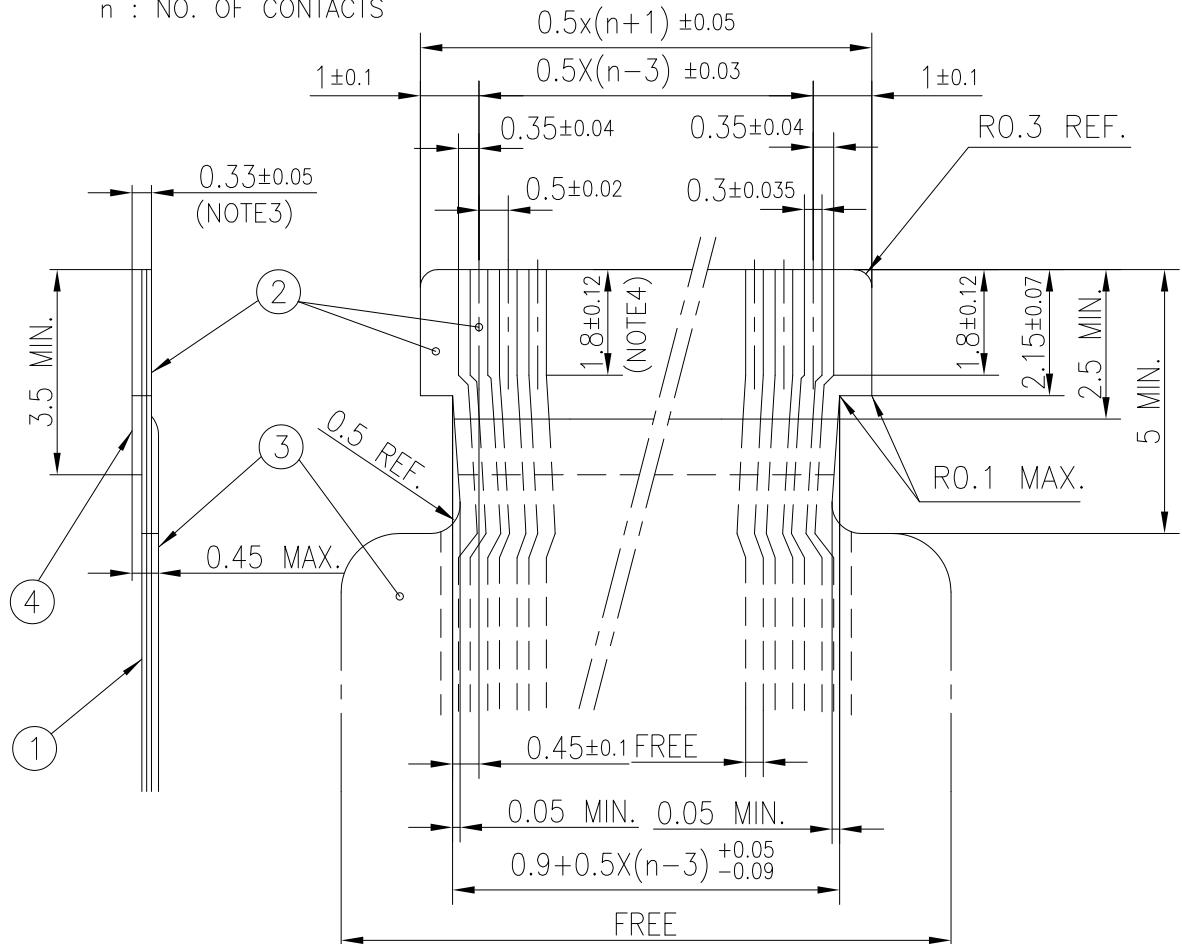
NOTES

- THIS IS PLASTIC TAPE PACKAGED CONNECTOR USED FOR FPC AND CYPES WITH AUTOMATIC MOUNTING (SMT).
- SEE JIS C 0806 (PACKING OF ELECTRONIC COMPONENTS ON CONTINUOUS TAPES (SURFACE MOUNTING DEVICES)) FOR SHAPE AND DIMENSIONS OF PLASTIC (EMBOSS) TAPE AND REEL.
- F DIMENSION IS PORTION OF THE CORE.

mat'l. code				surface				tolerance				projection				product family																			
—				ISO 1302				ISO 406 ISO 1101								58EF																			
ltr		ecn no		dr		date		tolerances unless otherwise specified												title PLASTIC TAPE PACKAGED 0.5 mm CONTACT SPACING CONNECTOR (Cat. No. : SFV__R-4STBE1HLF)															
B								angles		linear		±5																							
								±5°																											
												scale N/A																							
								dr		S.WATANABE				2019-3-6								dwg no								sheet 7 of 8				size	
								engr		S.WATANABE				2019-3-6								10116954								A4					
								chr		S-H.THIO				2019-3-7																					
								appd		Y.KAMEDA				2019-3-7																					
sheet index		revision sheet																																	

RECOMMENDED CABLE (FPC)

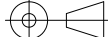

n : NO. OF CONTACTS



PT. NO.	PARTS NAME	MATERIAL	THICKNESS (um)
1	BASE FILM	POLYIMIDE OR POLYESTER OR EQUAL	25
2	CONDUCTOR	COPPER FOIL(PLATING : GOLD)	35
3	OVERLAY	POLYIMIDE OR POLYESTER OR EQUIVARENT	—
4	SUPPORTING TAPE	POLYESTER OR POLYIMIDE OR EQUIVARENT	188

NOTES

1. NO BURR AT EACH PORTION.
2. NO PEELING IN COMMON USE.
3. TOTAL THICKNESS LIMIT OF EACH MATERIAL (INCLUDING ADHESIVE AGENT) IS SPECIFIED.
4. THIS DIMENSION INDICATES THE RANGE FOR 0.3±0.035 CONDUCTOR WIDTH.

mat'l. code				surface 58		tolerance		projection		product family										
—				ISO 1302		ISO 406 ISO 1101				58EF										
ltr	ecn no	dr	date	tolerances		unless		otherwise specified		title										
B				angles		linear				RECOMMENDED CABLE										
										(Cat. No. : SFV__R-3/4STB__HLF)										
										scale N/A										
				dr	S.WATANABE		2019-3-6				dwg no						sheet 8 of 8		size	
				engr	S.WATANABE		2019-3-6				10116954								A4	
				chr	S-H.THIO		2019-3-7													
				appd	Y.KAMEDA		2019-3-7													
sheet index		revision																		
		sheet																		

Mouser Electronics

Authorized Distributor

Click to View Pricing, Inventory, Delivery & Lifecycle Information:

[FCI / Amphenol:](#)

[SFV16R-4STBE1HLF](#)