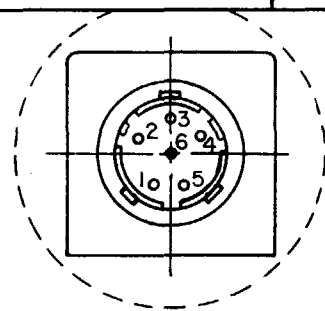


FREEPORT, ILLINOIS, U S A
A DIVISION OF HONEYWELL
FED. MFG. CODE 91929

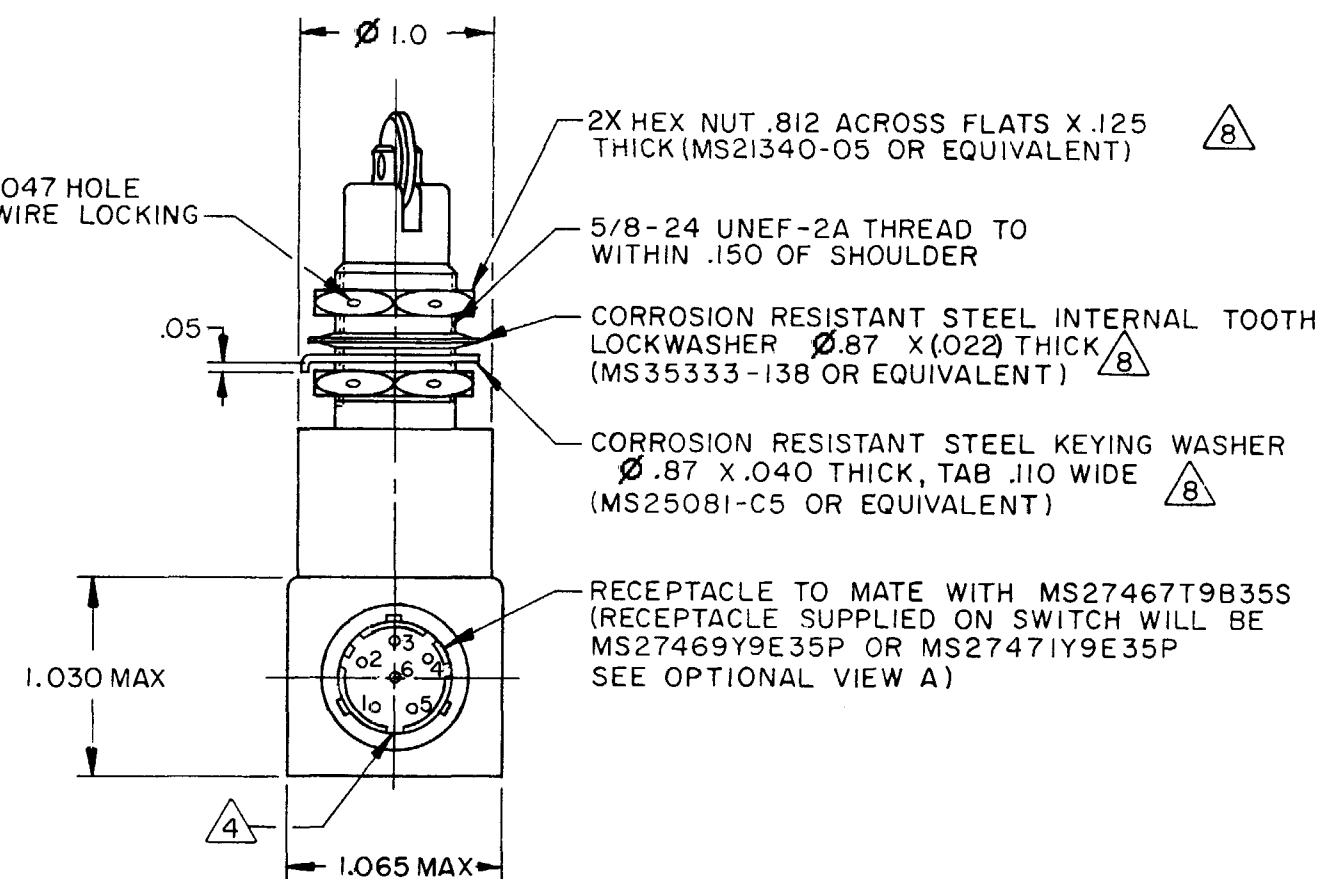
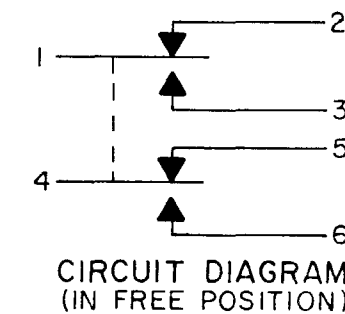
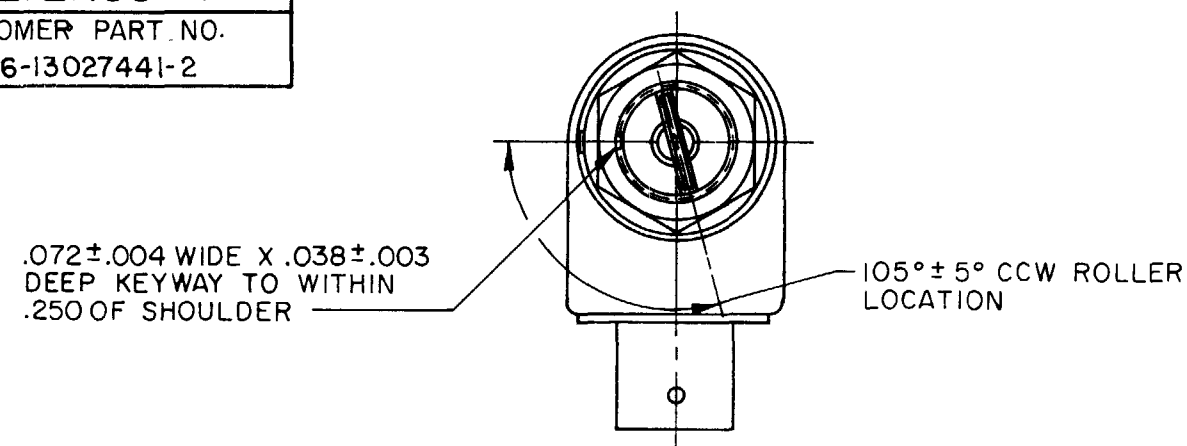
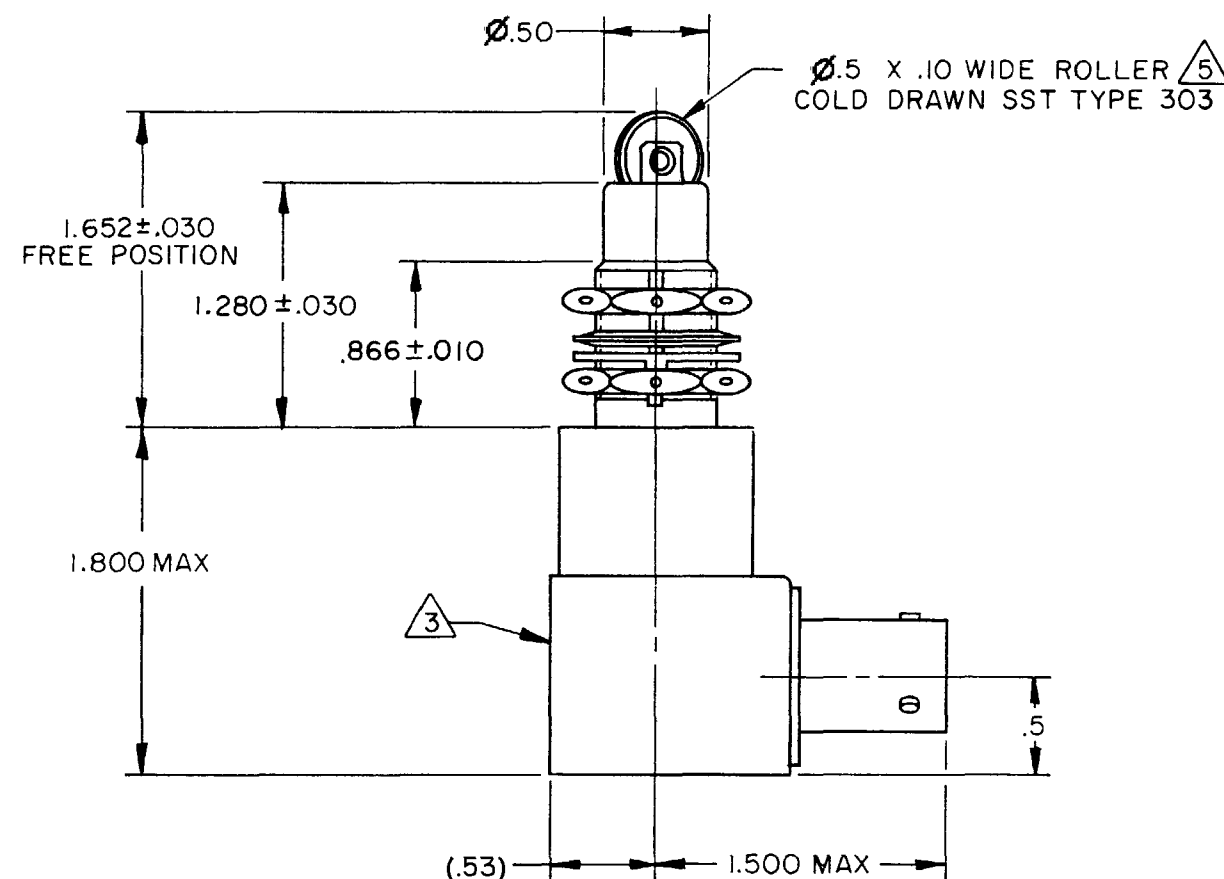
CATALOG LISTING

221EN55-R

CUSTOMER PART NO.
18876-1302744-2

VIEW

RECEPTACLE MS27471Y9E 35P

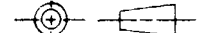


NOTES

- NOTES
- 1 - ALL EXPOSED PARTS ARE CORROSION RESISTANT
 - 2 - SWITCH SEALED PER MIL-PRF-8805 SYMBOL 4
 - ③ CATALOG LISTING, CIRCUIT DIAGRAM, FSCM NO. AND CUSTOMER PART NO. PERMANENTLY MARKED ON SIDE OF SWITCH. RED IDENTIFICATION STICKER PLACED AT THE END OF CUSTOMER PART NUMBER
 - ④ RECEPTACLE POLARIZING KEY POSITION
 - ⑤ ROLLER WILL ROTATE FREELY
 - 6 - PLUNGER SEAL MATERIAL - E.P. RUBBER
 - 7 - NOTED ELECTRICAL RATING APPLY AS SPECIFIED IN MIL-PRF-8805/40-1 UP TO 185°F
 - ⑧ HARDWARE MAYBE PACKAGED UNASSEMBLED PER MIL-PRF-8805
 - 9 - SWITCH RATED FOR -65°F TO 185°F CONTINUOUS OPERATING CONDITION AND 250°F IN NONOPERATING CONDITION

ANSI Y14.5M-1982 APPLIES

THIS DRAWING COVERS A PROPRIETARY ITEM AND IS THE PROPERTY OF MICRO SWITCH, A DIVISION OF HONEYWELL. THIS DRAWING IS NOT TO BE COPIED OR USED WITHOUT THE APPROVAL OF MICRO SWITCH.

CHARACTERISTICS		ELECTRICAL DATA		TOLERANCES				
OPERATING FORCE ----- 6-10 LB		CONTACT ARRANGEMENT SEE CIRCUIT DIAGRAM		APPLY TO DESIGN UNITS. CONVERSIONS ARE ONLY FOR REFERENCE. UNLESS NOTED, TOLERANCES ARE:				
FULL OVERTRAVEL FORCE ----- 30 LB MAX				DIM. mm	TOL. mm/in	DIM. mm	TOL. mm/in	
RELEASE FORCE ----- 4 LB MIN		LOAD	28 VDC		NO PLACES X	±.04		
PRETRAVEL ----- .040 MAX			SEA LEVEL	50,000 FT	ONE PLACE X,X	0.47/0.18	X,X	0.61/0.23
DIFFERENTIAL TRAVEL ----- .020 MAX					TWO PLACES X,XX	0.57/0.08	X,XX	0.59/0.07
OVERTRAVEL ----- .250 MIN					THREE PLACES ANGLES	X,XXX	0.137/0.00	
					SIMETRIC		JS CUMMARY	
		DESIGN UNITS	<input type="checkbox"/>		<input checked="" type="checkbox"/>			
		THIRD ANGLE PROJECTION						
								
		WEIGHT 7 OZ MAX						

SCALE FULL

DO NOT SCALE PRINT

TOLERANCES

APPLY TO DESIGN UNITS. CONVERSIONS ARE ONLY FOR REFERENCE. UNLESS NOTED, TOLERANCES ARE ±			
DIM.	TOL.	DIM.	TOL.
mm	mm/in	in	mm/in

ONE PLACE	X,X	0.47,0.16	X,X	0.87,0.53
TWO PLACES	X,XX	0.15/,006	X,XX	0.38,0.10
THREE PLACES			X,XXX	0.13,0.00
ANGLES				

SI METRIC	US CUSTOMARY
-----------	--------------

DESIGN UNITS	<input type="checkbox"/>	<input checked="" type="checkbox"/>
--------------	--------------------------	-------------------------------------

THIRD ANGLE PROJECTION

WEIGHT 7 OZ MAX

ALOG LISTING
221EN55-R
PAGE 1 OF 1

11
SSUE

REVISIONS

A	PR13003 TSK 16 MAY 85
B	C058843 TSK 22 JAN 85
C	C061863 TSK 11 JUNE 87
D	CO- 95485 J J A 28 SEP 99
E	200942 CSL 7 AUG 00

RASTER
FO-5285

Mouser Electronics

Authorized Distributor

Click to View Pricing, Inventory, Delivery & Lifecycle Information:

[Honeywell:](#)

[221EN55-R](#)