

Customer Information Sheet

DRAWING No.: M80-521XXXX

SHEET 2 OF 2

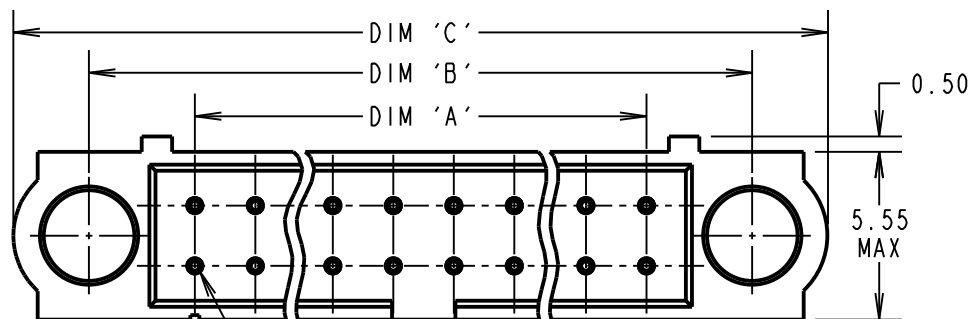
IF IN DOUBT - ASK

(C)

NOT TO SCALE

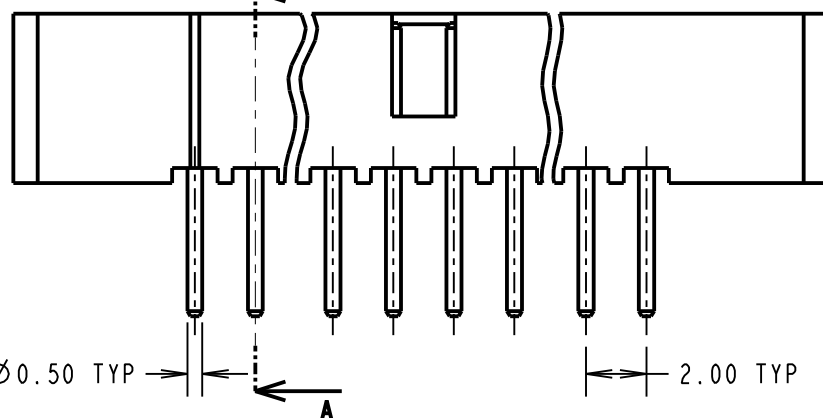
THIRD ANGLE PROJECTION

ALL DIMENSIONS IN mm



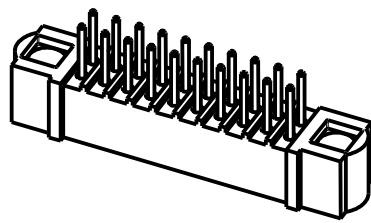
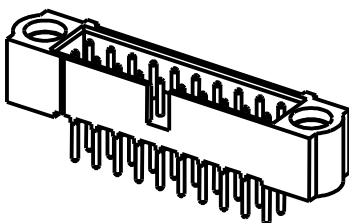
CONTACT No. 1

A



Ø0.50 TYP

A



ORDER CODE:

M80-521XXXX

TOTAL No. OF CONTACTS

04 TO 50

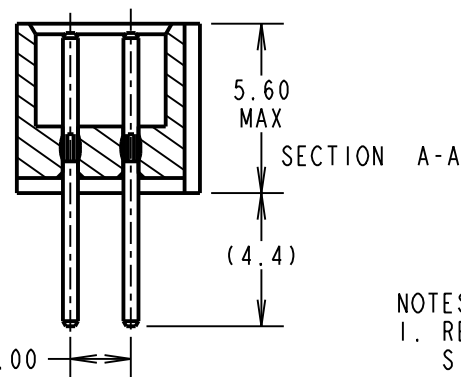
(EVEN NUMBERS ONLY)

FINISH

05 - GOLD

22 - SELECTIVE GOLD + TIN/LEAD

42 - SELECTIVE GOLD + 100% TIN



SECTION A-A

NOTES:

1. RECOMMENDED PCB HOLE
SIZE = Ø0.70mm±0.05.

SPECIFICATIONS:

MATERIAL:

MOULDING = GLASS-FILLED PPS,
UL94V-0, BLACK

CONTACT = PHOSPHOR BRONZE

FINISH (CONTACTS):

05 = 0.25 - 0.3µ GOLD

22 = 0.75µ GOLD ON CONTACT AREA,
3µ 90/10 TIN/LEAD ON TAILS42 = 0.75µ GOLD ON CONTACT AREA,
3µ 100% TIN OVER NICKEL ON TAILS

ELECTRICAL:

CURRENT RATING AT 25°C = 3.0A MAX

CURRENT RATING AT 85°C = 2.2A MAX

WORKING VOLTAGE = 800V AC/DC

VOLTAGE PROOF = 1200V AC/DC

CONTACT RESISTANCE = 25 mΩ MAX

INSULATION RESISTANCE = 100 MΩ MIN

MECHANICAL:

DURABILITY = 500 OPERATIONS

ENVIRONMENTAL:

TEMPERATURE RANGE = -55°C TO +125°C

PACKING: TUBE

FOR COMPLETE SPECIFICATION, SEE
COMPONENT SPEC C005XX (LATEST ISSUE)

DIMENSION	CALCULATION
DIM 'A'	TOTAL No. OF CONTACTS - 2
DIM 'B'	TOTAL No. OF CONTACTS + 5
DIM 'C'	TOTAL No. OF CONTACTS + 10
EXAMPLE: CONNECTOR WITH 20 CONTACTS, GOLD ON CONTACT AREA AND 100% OVER NICKEL TIN ON TAIL, M80-5212042.	
DIM 'A' = 18.00mm, DIM 'B' = 25.00mm, DIM 'C' = 30.00mm	

MSP	3	18.08.15	13052
NAME	ISS.	DATE	C/NOTE
APPROVED: M.PERREN			
CHECKED: M.PLESTED			
DRAWN: W. J. BOURNE			
CUSTOMER REF.:			
ASSEMBLY DRG:			

HARWINwww.harwin.com
technical@harwin.comTHIS DRAWING AND ANY
INFORMATION OR DESCRIPTIVE
MATTER SET OUT HEREON ARE
CONFIDENTIAL AND COPYRIGHT
PROPERTY OF THE HARWIN
GROUP AND MUST NOT BE
DISCLOSED, LOANED, COPIED
OR USED FOR MANUFACTURING,
TENDERING OR FOR ANY
OTHER PURPOSE WITHOUT
THEIR WRITTEN PERMISSION.TOLERANCES
X. = ±1mm
X.X = ±0.50mm
X.XX = ±0.10mm
X.XXX = ±0.01mm
ANGLES = ±5°
UNLESS STATED

MATERIAL:

SEE ABOVE

FINISH: SEE ABOVE

S/AREA: mm²

TITLE: JACKSCREW DATAMATE
DIL VERTICAL PC TAIL (4.5mm)
MALE ASSEMBLY (NO J/S)

DRAWING NUMBER:

M80-521XXXXSHT
2
OF
2

Mouser Electronics

Authorized Distributor

Click to View Pricing, Inventory, Delivery & Lifecycle Information:

Harwin:

[M80-5215022](#) [M80-5214222](#) [M80-5212042](#) [M80-5211042](#) [M80-5210642](#) [M80-5212642](#) [M80-5211442](#) [M80-5214422](#) [M80-5213442](#) [M80-5215042](#) [M80-5214242](#) [M80-5214022](#) [M80-5211022](#) [M80-5210622](#) [M80-5212622](#) [M80-5211422](#) [M80-5211222](#) [M80-5211242](#) [M80-5211822](#) [M80-5211842](#) [M80-5210442](#) [M80-5211642](#) [M80-5213405](#) [M80-5210842](#) [M80-5211622](#) [M80-5210422](#) [M80-5210822](#)