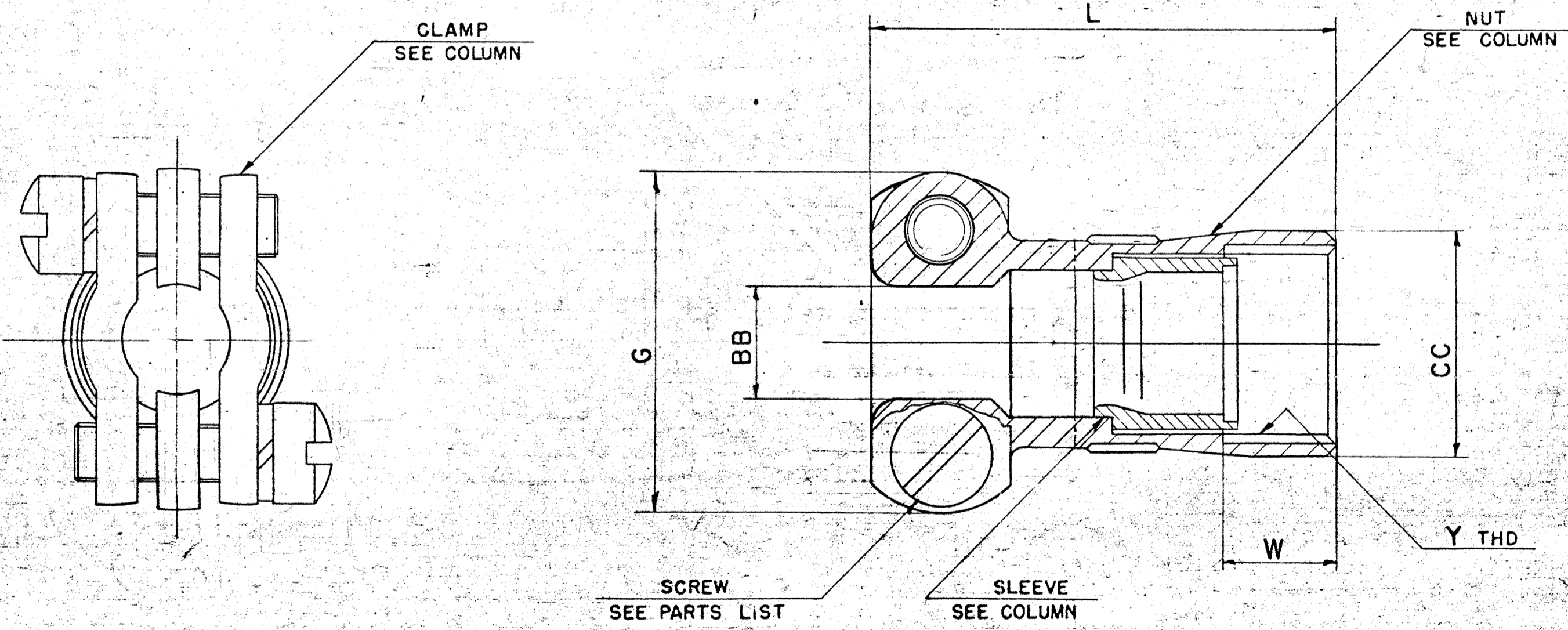


| ASSEMBLY NUMBER | DETAILS | | | | G MAX | L MAX | BB DIA +.000 - .010 | CC DIA | Y THREAD REF SIZE CLASS 2B | W +.062 - .031 | SCREW SIZE | WT-LB | RELEASE |
|-----------------|-------------|-------------|-------------|-----|-------|-------|---------------------|--------|----------------------------|----------------|------------|-------|-----------|
| | NUT | SLEEVE | CLAMP | | | | | | | | | | |
| | | | PART NUMBER | QTY | | | | | | | | | |
| 10-101984-8 | 10-101982-8 | 10-454396-8 | 10-130511-8 | 2 | .775 | 1.190 | .250 | .540 | .4375-28UNEF | .250 | 6-32NC | | 33788-4 |
| -10 | -10 | -10 | -10 | | .837 | | .312 | .665 | .5625-24UNEF | | | | |
| -12 | -12 | -12 | -12 | | .963 | | .438 | .793 | .6875-24UNEF | | | | |
| -14 | -14 | -14 | -14 | | 1.087 | | .562 | .910 | .8125-20UNEF | | | | |
| -16 | -16 | -16 | -16 | | 1.150 | 1.292 | .624 | 1.037 | .9375-20UNEF | | | | |
| -18 | -18 | -18 | -18 | | 1.400 | 1.292 | .750 | 1.155 | 1.0625-18UNEF | | 8-32NC | | |
| -20 | -20 | -20 | -18 | | 1.400 | 1.332 | .750 | 1.281 | 1.1875-18UNEF | .344 | | | |
| -22 | -22 | -22 | -20 | | 1.587 | 1.332 | .938 | 1.408 | 1.3125-18UNEF | .344 | | | |
| -24 | -24 | -24 | -22 | | 1.681 | 1.332 | 1.000 | 1.533 | 1.4375-18UNEF | .344 | | | 35524-406 |

| REV | DATE | BY | DESCRIPTION |
|-----|---------|---------|--------------------------------------|
| 1 | 4-1-59 | BARTON | ADD. & REL. SIZE 24 & DATA |
| 2 | 6-23-59 | WELLES | REV DATA FOR -24 |
| 3 | 7-24-62 | WELLES | ADD. & REL. -XX0 FINISH |
| A1 | 9-36-64 | HANN | (MFG) ADD & REL -XX7 & -XX8 FINISHES |
| A2 | 7-5-72 | Handell | REV SLEEVE COL |
| A3 | 4-17-73 | HANN | ADD & REL -XX9, -XXE, -XXG |
| B | 7-12-77 | Wefels | (MFG) REV Y THD COL. |
| C | 2-12-79 | JED | (CLIT) REV L COL. |
| D | 9-7-95 | JED | (CLIT) ADD & REL -XXY FINISH & DATA |
| E | 9-16-98 | JED | (CLIT) ADDED & RELEASE -XXY & DATA |



10-101984

NOTES: REF SYMBOL

1. TO COMPLETE ASSEMBLY NO. AND DETAIL NO., ADD APPLICABLE LAST CHARACTER SUFFIX NO. FOR DESIRED FINISH.

- | | |
|-------------------------------------|-------------|
| CHROMATE TREATED | SUFFIX -XX0 |
| BRIGHT CADMIUM PLATE | SUFFIX -XX1 |
| BLACK ANODIZE | SUFFIX -XX2 |
| CADMIUM PLATE OLIVE DRAB | SUFFIX -XX3 |
| GREY ANODIZE | SUFFIX -XX4 |
| ANODIC COATING | SUFFIX -XX5 |
| CADMIUM PLATE NICKEL BASE | SUFFIX -XX7 |
| BRIGHT NICKEL | SUFFIX -XX8 |
| OLIVE DRAB, CAD. PLATE, NICKEL BASE | SUFFIX -XX9 |
| CHROME PLATE | SUFFIX -XXE |
| NICKEL ALLOY PLATE | SUFFIX -XXG |
| BLACK ZINC ALLOY PLATE | SUFFIX -XXY |
| BLACK ZINC ALLOY CONDUCTIVE PLATE | SUFFIX -XXX |

RELEASE
35524-1255
~~33788-4~~
52524-1407
54524-368

USE OF THIS DOCUMENT IS UNLIMITED. DOCUMENTS REFERENCED HEREON CONTAIN LIMITED RIGHTS DATA.

| | | | | | | | | | | | |
|--|--|----------------------------|--|--|----------------------|-------------|--------------|------------------|-----------------|---------------|------------------------|
| MATERIAL SPEC. | | PROCESS SPEC. | | SCINTILLA MAGNETO DIVISION BENDIX AVIATION CORPORATION SIDNEY, N. Y., U.S.A. | | | | | | | |
| HEAT TREAT SPEC. | | FINISH SPEC. SEE NOTE 1 | | NAME CLAMP ASSEMBLY, CABLE STRAIN RELIEF, ELECTRICAL CONNECTOR, TYPE PC()E | | | | | | | |
| TOOL ACC. | | COM. REC. | | D'MAN E. GEORGE | CHECKER W. J. ... | MAT. ... | ST'DS ... | CH. D'MAN ... | APPROVED ... | SCALE NONE | COPY/REVISED BY ... |
| 10-142706/50 SEE COL 10-101984 CODE 77820 | | | | | | | | | | | |

Scanned

Mouser Electronics

Authorized Distributor

Click to View Pricing, Inventory, Delivery & Lifecycle Information:

Amphenol:

[10-101984-10G](#) [10-101984-24G](#) [10-101984-08G](#) [10-101984-12G](#) [10-101984-16G](#) [10-101984-20G](#) [10-130511-083](#)
[10-130511-103](#) [10-130511-123](#) [10-130511-12G](#) [10-130511-143](#) [10-130511-163](#) [10-130511-183](#) [10-130511-203](#)
[10-130511-223](#) [10-130511-149](#) [10-101984-18G](#) [10-101984-08Y](#) [10-130511-12Y](#) [10-130511-10X](#) [10-130511-18X](#)
[10-101984-081](#) [10-101984-14Y](#) [10-101984-12X](#) [10-101984-18X](#) [10-130511-081](#) [10-130511-08Y](#) [10-130511-109](#)
[10-101984-14G](#) [10-101984-10X](#) [10-130511-14Y](#) [10-454396-024](#) [10-101984-10Y](#) [10-101984-181](#) [10-101984-083](#)
[10-101984-12Y](#) [10-101984-22X](#) [10-101984-101](#) [10-101984-203](#) [10-101984-16Y](#) [10-101984-08X](#) [10-101984-14X](#)
[10-101984-16X](#) [10-101984-18Y](#) [10-101984-103](#) [10-101984-123](#) [10-350349-40Y](#) [10-101987-16X](#) [MS3420-16L](#) [10-](#)
[101981-10X](#) [10-101984-143](#) [10-101984-163](#) [10-101984-223](#) [10-101984-221](#) [10-101984-183](#) [10-101984-20X](#) [10-](#)
[101984-243](#)