

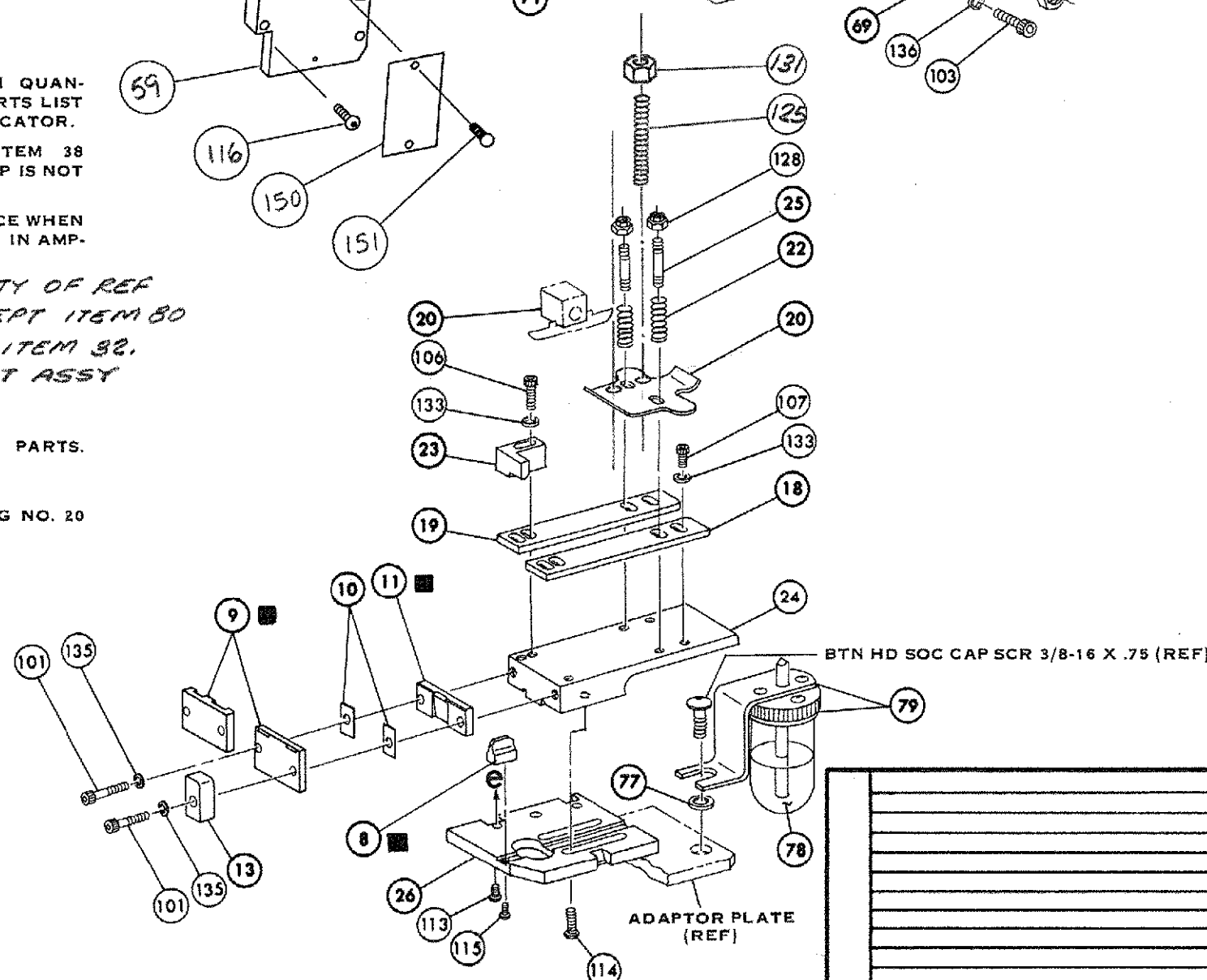
ALTERNATE DRAG METHOD

## NOTES:

- ONLY THE ITEMS WITH QUANTITIES SPECIFIED ON PARTS LIST ARE USED ON THIS APPLICATOR.
- USED IN PLACE OF ITEM 38 WHEN INSULATION CRIMP IS NOT USED.
- GUARD MUST BE IN PLACE WHEN OPERATING APPLICATOR IN AMP-O-LECTRIC PRESS.
- PARTS WITH QTY OF REF SPECIFIED (EXCEPT ITEM 80) ARE USED ON ITEM 38.
- CUT TO LGTH AT ASSY

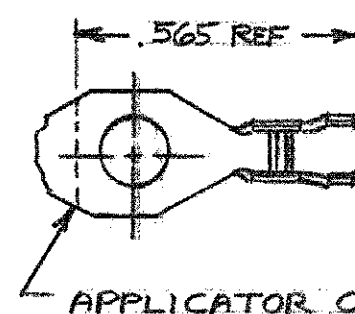
## KEY:

- RECOMMENDED SPARE PARTS.
- LUBRICATE DAILY USING NO. 20 MACHINE OIL.
- GREASE LIGHTLY.



LTR REVISION RECORD

REQ.	PART NO.	DESCRIPTION	NO.	REQ.	PART NO.	DESCRIPTION	NO.
2	21017-2	SCR DRIVE (#2 x .19) ID PLATE	162	REF	690517-1	SPACER	71
1	461264-1	PLATE, ID	161	22594-8	HEX, NUT		70
REF	21045-3	RING, RETAINING 'C' (.187 DIA) FEED PIN	160	240628-1	PLATE, ADJ		69
REF	21045-3	RING, RETAINING 'C' (.187 DIA) FEED PIN	159	240626-1	SHAFT, PIVOT		68
REF	21045-3	RING, RETAINING 'C' (.187 DIA) FEED PIN	158	240633-1	BUSHING		67
REF	21045-3	RING, RETAINING 'C' (.187 DIA) FEED PIN	157	455680-1	LEVER, INTERMEDIATE		66
REF	21045-3	RING, RETAINING 'C' (.187 DIA) FEED PIN	156	240629-1	BLOCK, PIVOT		65
REF	21045-3	RING, RETAINING 'C' (.187 DIA) FEED PIN	155	240632-2	SCREW, ADJ		64
REF	21045-3	RING, RETAINING 'C' (.187 DIA) FEED PIN	154	240659-3	PIN, CAM ROLLER		63
REF	21045-3	RING, RETAINING 'C' (.187 DIA) FEED PIN	153	240658-1	CAM, ROLLER		62
REF	21045-3	RING, RETAINING 'C' (.187 DIA) FEED PIN	152	454398-1	ROD, FEED		61
REF	21045-3	RING, RETAINING 'C' (.187 DIA) FEED PIN	151				60
REF	21045-3	RING, RETAINING 'C' (.187 DIA) FEED PIN	150	REF	454220-1	CAP, RAM	59
REF	21045-3	RING, RETAINING 'C' (.187 DIA) FEED PIN	149	REF	453736-1	HOUSING	58
REF	21045-3	RING, RETAINING 'C' (.187 DIA) FEED PIN	148				57
REF	21045-3	RING, RETAINING 'C' (.187 DIA) FEED PIN	147	REF	240624-1	PIN, FEED FINGER	56
REF	21045-3	RING, RETAINING 'C' (.187 DIA) FEED PIN	146	REF	691499-1	SPRING, FEED FINGER	55
REF	21045-3	RING, RETAINING 'C' (.187 DIA) FEED PIN	145	REF	240635-1	FINGER, FEED	54
REF	21045-3	RING, RETAINING 'C' (.187 DIA) FEED PIN	144	REF	240634-1	LEVER, TERMINAL	53
REF	21045-3	RING, RETAINING 'C' (.187 DIA) FEED PIN	143				52
REF	21045-3	RING, RETAINING 'C' (.187 DIA) FEED PIN	142				51
REF	21045-3	RING, RETAINING 'C' (.187 DIA) FEED PIN	141				50
REF	21045-3	RING, RETAINING 'C' (.187 DIA) FEED PIN	140	1	7-21002-9	BOLT, CRIMPER	49
REF	21045-3	RING, RETAINING 'C' (.187 DIA) FEED PIN	139	1	690501-3	CAM, POSTFEED 1- 1/8 STROKE	48
REF	21045-3	RING, RETAINING 'C' (.187 DIA) FEED PIN	138				47
REF	21045-3	RING, RETAINING 'C' (.187 DIA) FEED PIN	137				46
REF	21045-3	RING, RETAINING 'C' (.187 DIA) FEED PIN	136	1	690191-1	PLUG, NYLON	45
REF	21045-3	RING, RETAINING 'C' (.187 DIA) FEED PIN	135	1	455674-1	RAM	44
REF	21045-3	RING, RETAINING 'C' (.187 DIA) FEED PIN	134	1	690125-1	WASHER, LAMINATED	43
REF	21045-3	RING, RETAINING 'C' (.187 DIA) FEED PIN	133	1	690124-1	WASHER, RAM	42
REF	21045-3	RING, RETAINING 'C' (.187 DIA) FEED PIN	132	2	23241-6	BALL, STEEL	41
REF	21045-3	RING, RETAINING 'C' (.187 DIA) FEED PIN	131	2	690170-1	SPRING, COMPRESSION	40
REF	21045-3	RING, RETAINING 'C' (.187 DIA) FEED PIN	130	1	690142-1	DISC, INSULATION	38
REF	21045-3	RING, RETAINING 'C' (.187 DIA) FEED PIN	129	1	690692-7	DISC, WIRE	37
REF	21045-3	RING, RETAINING 'C' (.187 DIA) FEED PIN	128	1	22480-5	WASHER, SPRING	36
REF	21045-3	RING, RETAINING 'C' (.187 DIA) FEED PIN	127				35
REF	21045-3	RING, RETAINING 'C' (.187 DIA) FEED PIN	126	1	690212-1	POST, RAM	34
REF	21045-3	RING, RETAINING 'C' (.187 DIA) FEED PIN	125				33
REF	21045-3	RING, RETAINING 'C' (.187 DIA) FEED PIN	124	1	458980-1	APPLICATOR, BASIC (SUB ASSY)	32
REF	21045-3	RING, RETAINING 'C' (.187 DIA) FEED PIN	123				31
REF	21045-3	RING, RETAINING 'C' (.187 DIA) FEED PIN	122				30
REF	21045-3	RING, RETAINING 'C' (.187 DIA) FEED PIN	121				29
REF	21045-3	RING, RETAINING 'C' (.187 DIA) FEED PIN	120	1	3-690451-2	SPACER, STRIPPER	28
REF	21045-3	RING, RETAINING 'C' (.187 DIA) FEED PIN	119	1	240639-1	STRIPPER	27
REF	21045-3	RING, RETAINING 'C' (.187 DIA) FEED PIN	118	REF	455676-1	PLATE, BASE	26
REF	21045-3	RING, RETAINING 'C' (.187 DIA) FEED PIN	117	2	22354-3	DRAG, STUD	25
REF	21045-3	RING, RETAINING 'C' (.187 DIA) FEED PIN	116	1	455678-1	PLATE, STRIP GUIDE	24
REF	21045-3	RING, RETAINING 'C' (.187 DIA) FEED PIN	115	1	455678-1	PLATE, STRIP HOLD	23
REF	21045-3	RING, RETAINING 'C' (.187 DIA) FEED PIN	114	2	4-22281-1	SPRING, DRAG	22
REF	21045-3	RING, RETAINING 'C' (.187 DIA) FEED PIN	113	2	240636-1	LEVER, DRAG	21
REF	21045-3	RING, RETAINING 'C' (.187 DIA) FEED PIN	112	1	454177-1	DRAG, STOCK	20
REF	21045-3	RING, RETAINING 'C' (.187 DIA) FEED PIN	111	1	458030-9	GUIDE, STRIP REAR	19
REF	21045-3	RING, RETAINING 'C' (.187 DIA) FEED PIN	110	1	458031-9	GUIDE, STRIP FRONT	18
REF	21045-3	RING, RETAINING 'C' (.187 DIA) FEED PIN	109	REF	454178-1	GUIDE, FEED ROD	17
REF	21045-3	RING, RETAINING 'C' (.187 DIA) FEED PIN	108	REF	4-22284-9	SPRING, FEED RETURN	16
REF	21045-3	RING, RETAINING 'C' (.187 DIA) FEED PIN	107	1	454665-1	ADAPTOR, DRAG	15
REF	21045-3	RING, RETAINING 'C' (.187 DIA) FEED PIN	106				14
REF	21045-3	RING, RETAINING 'C' (.187 DIA) FEED PIN	105				13
REF	21045-3	RING, RETAINING 'C' (.187 DIA) FEED PIN	104				12
REF	21045-3	RING, RETAINING 'C' (.187 DIA) FEED PIN	103				11
REF	21045-3	RING, RETAINING 'C' (.187 DIA) FEED PIN	102	1	240644-1	PLATE, REAR SHEAR	10
REF	21045-3	RING, RETAINING 'C' (.187 DIA) FEED PIN	101	2	1-240645-0	SPACER, SHEAR PLATE	9
REF	21045-3	RING, RETAINING 'C' (.187 DIA) FEED PIN	100	1	240642-1	PLATE, FRONT SHEAR	8
REF	21045-3	RING, RETAINING 'C' (.187 DIA) FEED PIN	99	1	3-240655-7	ANVIL	7
REF	21045-3	RING, RETAINING 'C' (.187 DIA) FEED PIN	98	1	1-240651-6	BLADE, SLUG	6
REF	21045-3	RING, RETAINING 'C' (.187 DIA) FEED PIN	97				5
REF	21045-3	RING, RETAINING 'C' (.187 DIA) FEED PIN	96	1	3-240641-6	SPACER, SHEAR BLADE	4
REF	21045-3	RING, RETAINING 'C' (.187 DIA) FEED PIN	95	1	238009-1	SPACER, TUBULAR, INS CRIMPER	3
REF	21045-3	RING, RETAINING 'C' (.187 DIA) FEED PIN	94	1	1-456134-5	CRIMPER, INSULATION	2
REF	21045-3	RING, RETAINING 'C' (.187 DIA) FEED PIN	93	1	455888-3	SPACER, INSULATION	1
REF	21045-3	RING, RETAINING 'C' (.187 DIA) FEED PIN	92	1	1-456405-5	CRIMPER, WIRE	



TERM APPL SPEC 114-2084

## CRIMPING DATA

PAD LETTER	CRIMP HEIGHT	WIRE SIZE	WIRE STRIP LENGTH
A	.055	#20	
B	.053	#22	
C	.050	#24	
D	.048	#26	
CRIMP	SIZE	TYPE	FEED
WIRE	.080	F	
INSULATION	.110	F	.656

INSULATION RANGE .048-.078 WIRE RANGE 26-20 APPLICATOR INSTRUCTION A8039

REMARKS

AMP-O-LECTRIC  
POST FEED

SET UP GAGE 458638-1 LAYOUT NO. 226

DRAWN 11/16/73 APPROVED 11/19/73

CHECKED 11/19/73 REL. 11/19/73

SCALE NONE NAME

MINIATURE QUICK CHANGE APPLICATOR  
END-FEED (SPADE)

CUSTOMER AND ASSEMBLY DRAWING

# Mouser Electronics

Authorized Distributor

Click to View Pricing, Inventory, Delivery & Lifecycle Information:

[TE Connectivity:](#)

[687962-2](#)