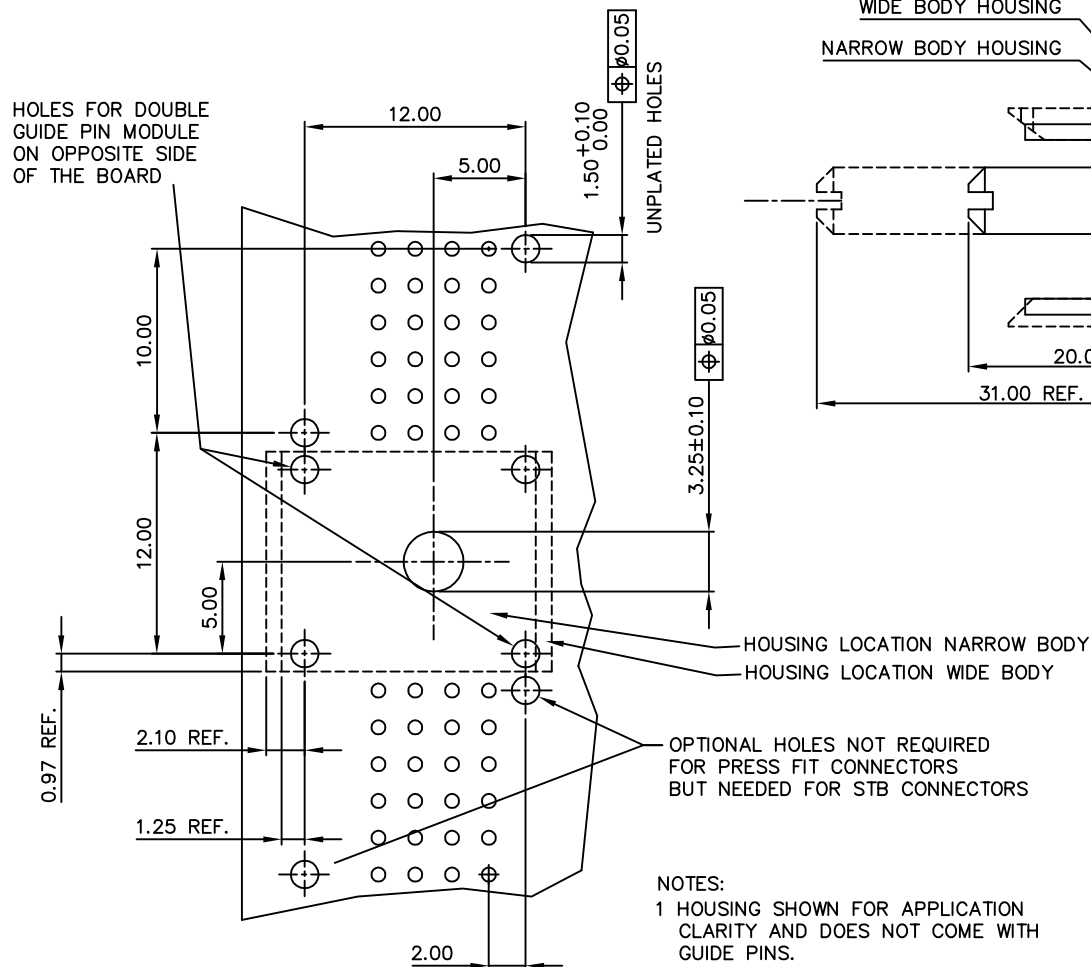


PRODUCT NUMBER	DESCRIPTION	D	L1	L2
70295-001LF	SHORT SINGLE GUIDE PIN WITH COMBO PAN HEAD SCREW	4.57		12.7
70295-002LF	LONG SINGLE GUIDE PIN WITH COMBO PAN HEAD SCREW	4.57		12.7
70295-003LF	SHORT DOUBLE GUIDE PIN	4.57	12.7	
70295-004LF	LONG DOUBLE GUIDE PIN	4.57	12.7	
70295-007LF	LONG DOUBLE GUIDE PIN FOR PCB 10mm THICKNESS	4.57	14.7	
70295-008LF	SHORT SINGLE GUIDE PIN WITH COMBO PAN HEAD SCREW DIAMETER GUIDE PIN REDUCED TO 4.2 mm	4.2		12.7



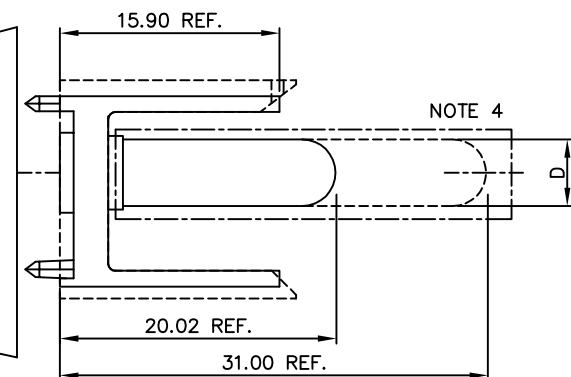
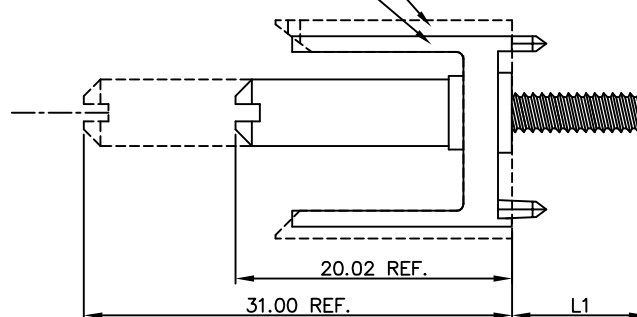
RECOMMENDED HOLE PATTERN
COMPONENT SIDE

NOTES:

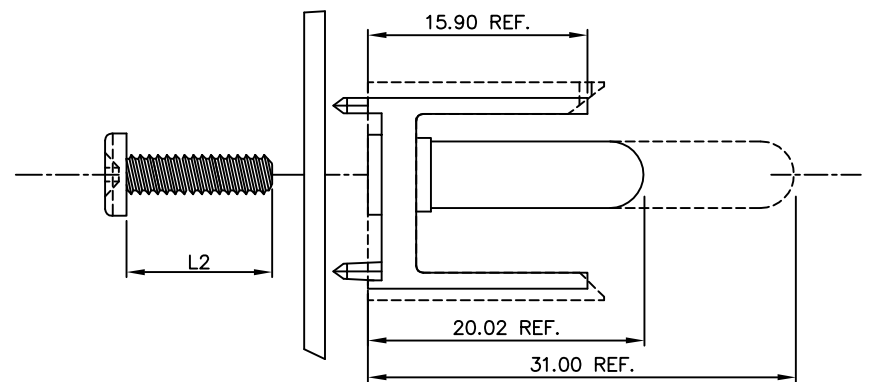
- 1 HOUSING SHOWN FOR APPLICATION CLARITY AND DOES NOT COME WITH GUIDE PINS.
- 2 SHORT GUIDE PINS TO BE USED WHEN A PCB STIFFENER IS PRESENT ON BOARD.
- 3 THIS PRODUCT MEETS EUROPEAN UNION DIRECTIVES AND OTHER COUNTRY REGULATIONS AS DESCRIBED IN GS-22-008

WIDE BODY HOUSING

NARROW BODY HOUSING



DOUBLE GUIDE PIN ASSEMBLY



SINGLE GUIDE PIN ASSEMBLY

mat'l. code				tolerances unless otherwise specified		CUSTOMER COPY		ELECTRONICS	
ltr	ecn	no	dr	date	linear	projection	title	product family	code
M	0005-0320	CLU	050907				GUIDE PIN ASSEMBLY 12 mm	ETRAL(tm)	213
G	HC8056	DOB	981027		angles				
H	H90222	HME	990323	dr	STU STONER	901026			
J	H90251	HME	990407	eng	STU STONER	901026			
K	HC9018	DOB	990727	chr	P SCHALK	950928			
L	H00023	LLA	000117	app	D ANDREWS	910315			
sheet	revision	M				scale	5:1		
Index	sheet	1							

Mouser Electronics

Authorized Distributor

Click to View Pricing, Inventory, Delivery & Lifecycle Information:

[FCI / Amphenol:](#)

[70295-003LF](#) [70295-001LF](#) [70295-002LF](#) [70295-004LF](#)