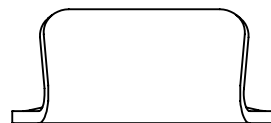
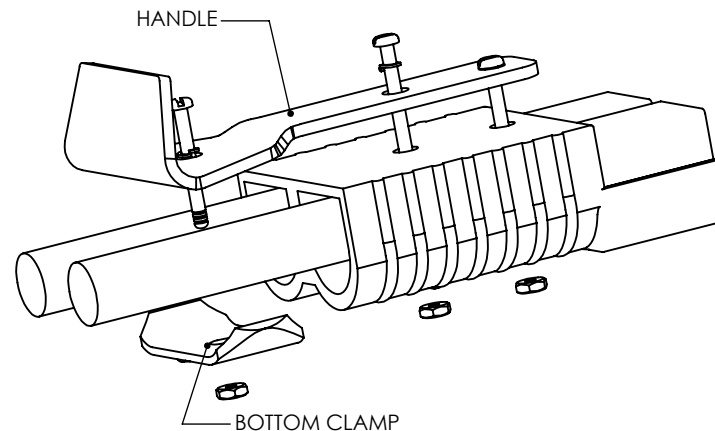
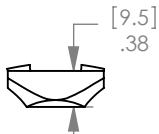
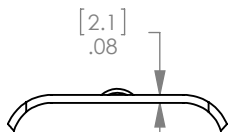
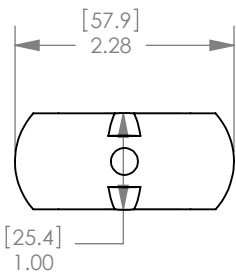
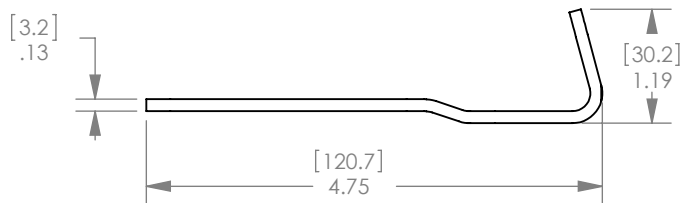
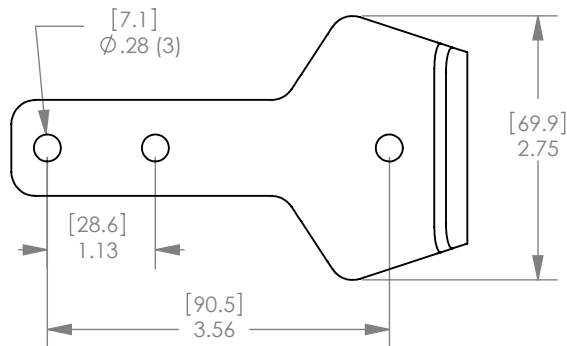


THE INFORMATION CONTAINED IN THIS DRAWING IS THE SOLE PROPERTY OF ANDERSON POWER PRODUCTS. ANY REPRODUCTION IN PART OR WHOLE WITHOUT THE WRITTEN PERMISSION OF ANDERSON POWER PRODUCTS IS PROHIBITED.

ANDERSON POWER PRODUCTS RESERVES THE RIGHT TO ALTER PRODUCT TYPES, THEIR TECHNICAL DATA, DIMENSION, STYLE AND ACCESSORIES WITHOUT PRIOR NOTIFICATION.



NOTES:

1. MATERIAL:
HANDLE- HOT ROLLED STEEL
BOTTOM CLAMP- COLD ROLLED STEEL
2. HARDWARE KIT INCLUDES-THREE MACHINE SCREWS,
THREE NUTS, AND THREE LOCK WASHERS
3. CONNECTOR SOLD SEPARATELY

ITEM NO.	PART OR IDENTIFYING NO.	NOMENCLATURE OR DESCRIPTION	MATERIAL SPECIFICATION	QTY REQD
COPYRIGHT 2002 ANDERSON POWER PRODUCTS. ALL RIGHTS RESERVED. UNAUTHORIZED REPRODUCTION HEREBY PROHIBITED.				
DIMENSIONS ARE IN INCHES DIMENSIONS IN PARENTHESES [] ARE IN MILLIMETERS		CAD GENERATED DRAWING, DO NOT MANUALLY UPDATE		ANDERSON POWER PRODUCTS
TOLERANCES ARE: 2PL- ±.02 [±.5]		APPROVALS	DATE	
MATERIALS: SEE NOTES		DRAWN	CMS 6/20/02	CATALOG NUMBER 911 SB350 HANDLE AND CLAMP
FINISH YELLOW CHROME		CHECKED	DJD 6/24/02	
DO NOT SCALE DRAWING		RESP ENG	WJM 6/25/02	SIZE
		MFG ENG	DAM 6/25/02	A SPECIFICATION:
		QUAL ENG	RPO 6/25/02	SCALE
				NONE
				CADFILES/01194
				SHEET 1 OF 1
				REV. 2

REV.	DESCRIPTION	APPRV	DATE
2	ECRN-14849 CLAMP THICKNESS DIMENSION	TWE	3/8/11
1	ECRN 14690: (FINISH) "YELLOW CHROME" WAS "ZINC, CLEAR CHROMATE"	CMS	8/17/10

REVISIONS

Mouser Electronics

Authorized Distributor

Click to View Pricing, Inventory, Delivery & Lifecycle Information:

[Anderson Power Products:](#)

[911](#)