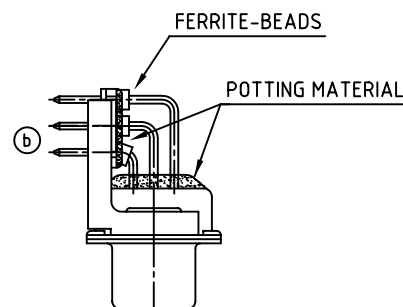
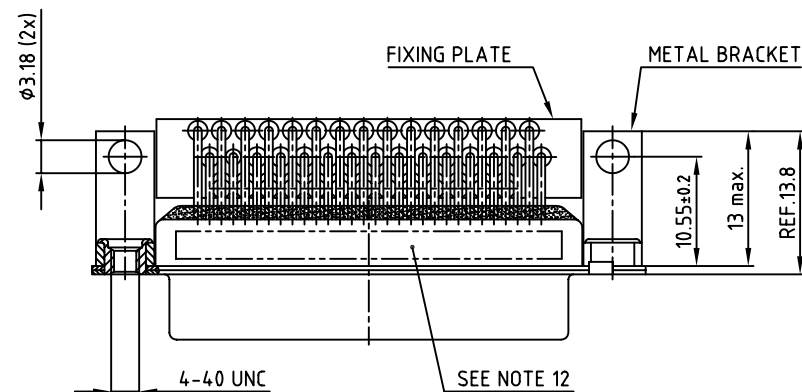
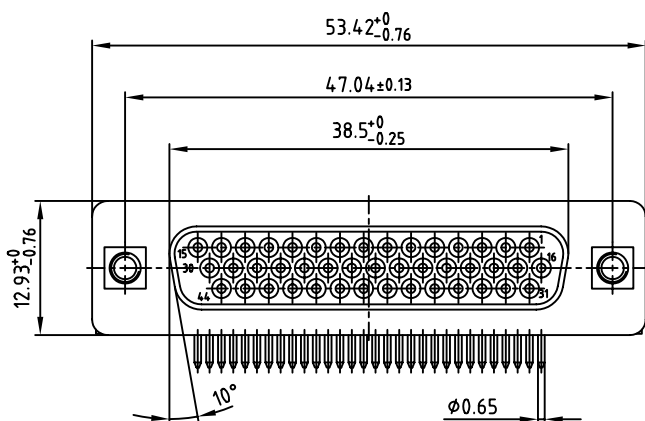
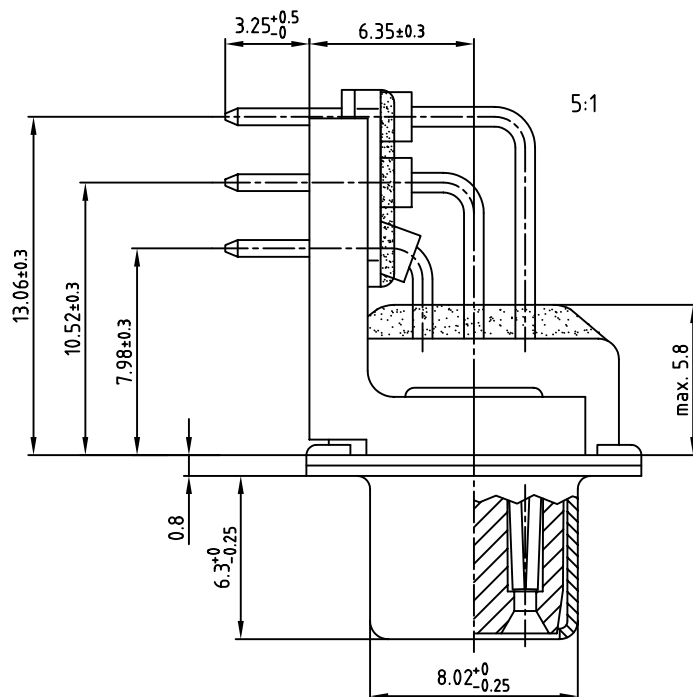


used for: D-SUB FILTER HD

CAPACITANCE 180pF ±20%	CAPACITANCE 370pF ±20%	CAPACITANCE 830pF ±20%
242A26600X	242A25640X	242A25680X

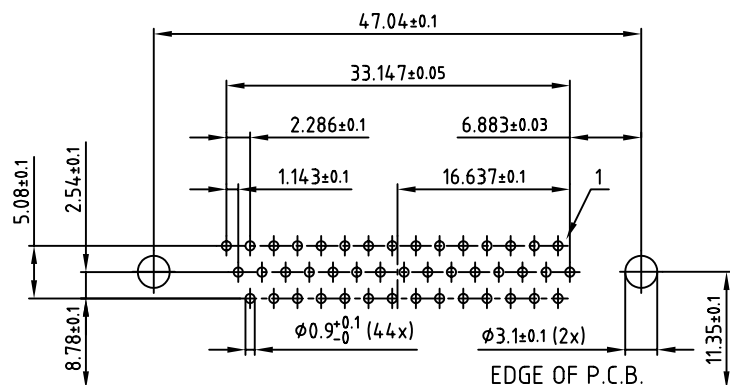


NOTES:

1. RoHS COMPLIANT
2. SUABLE FOR WAVE SOLDERING
3. METALSHELLS: STEEL; min. 315µin TIN over 40-80µin NICKEL
4. INSULATORS: HIGH TEMPERATURE PLASTIC UL 94 V-0, BLACK
5. CONTACTS: COPPER ALLOY
PLATING: 8µin HARD GOLD OVER min. 50µin NICKEL
6. METAL BRACKET: STEEL; min. 320µin TIN over 80µin NICKEL
7. THREADED INSERT: COPPER ALLOY; min. 200µin TIN over 80µin NICKEL
8. FIXING-PLATE: PBT GF UL 94 V-0, BLACK
9. CAPACITANCE: SEE TABLE
10. DIELECTRIC WITHSTANDING VOLTAGE: 300 VDC
11. MAXIMUM TORQUE VALUE FOR THREAD: 6in.LB
12. CONNECTOR IS PART MARKED: PART-NO. CONEC ABC

Directive 2002/95/EC
RoHS
Compliant

P.C.B. HOLE PATTERN



APPROVAL * FREIGABE * DEBLOCAGE * AUTOR/ZACION * APPROVAL
CUSTOMER APPROVAL DATE:
NAME: TITLE:
COMPANY NAME:
APPROVAL * FREIGABE * DEBLOCAGE * AUTOR/ZACION * APPROVAL

THIS DRAWING MAY NOT BE COPIED OR
REPRODUCED IN ANY WAY, AND MAY NOT
BE PASSED ON TO A THIRD PARTY, WITHOUT
WRITTEN PERMISSION.
OWNERSHIP AND COPYRIGHT OF CONEC GmbH
DO NOT ALTER CAD DRAWING BY HAND

2 x b	Ä2933	25.02.2008	Sonne
a	Origin		
rev.	description	date	name

tolerance	dim. in mm
2005	date
drawn	09.02. Lehmenkühler
appd.	09.02. Mickenbecker
norm	
d-old	

scale:	2:1 (5:1)
material:	SEE NOTES
title:	D-SUB HD FILTER FEMALE 90° 44pos. 0.350inch with metal bracket and threaded insert
dwg no:	AutoCAD 2004 DIN-A 24K1A604
part no:	SEE TABLE

Mouser Electronics

Authorized Distributor

Click to View Pricing, Inventory, Delivery & Lifecycle Information:

[CONEC:](#)

[242A25680X](#)