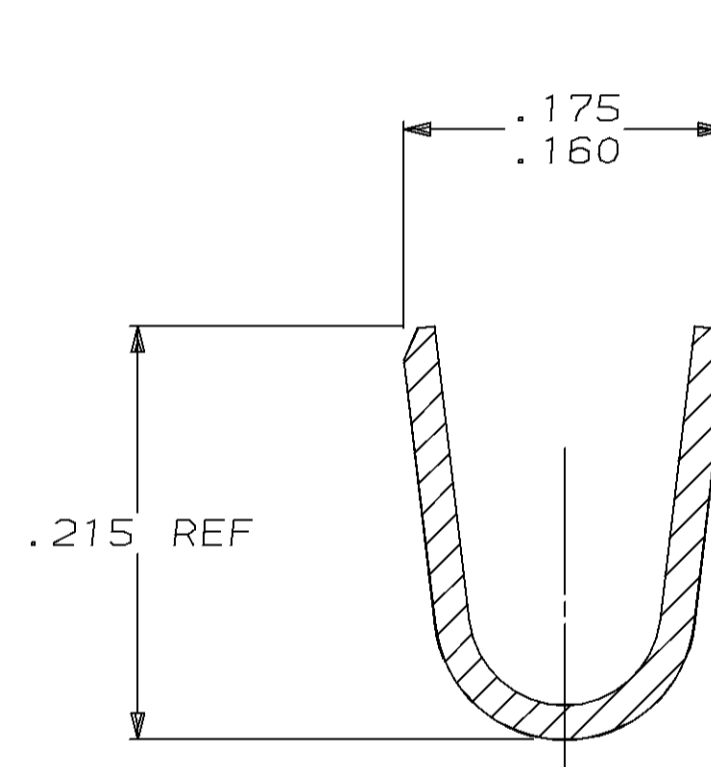
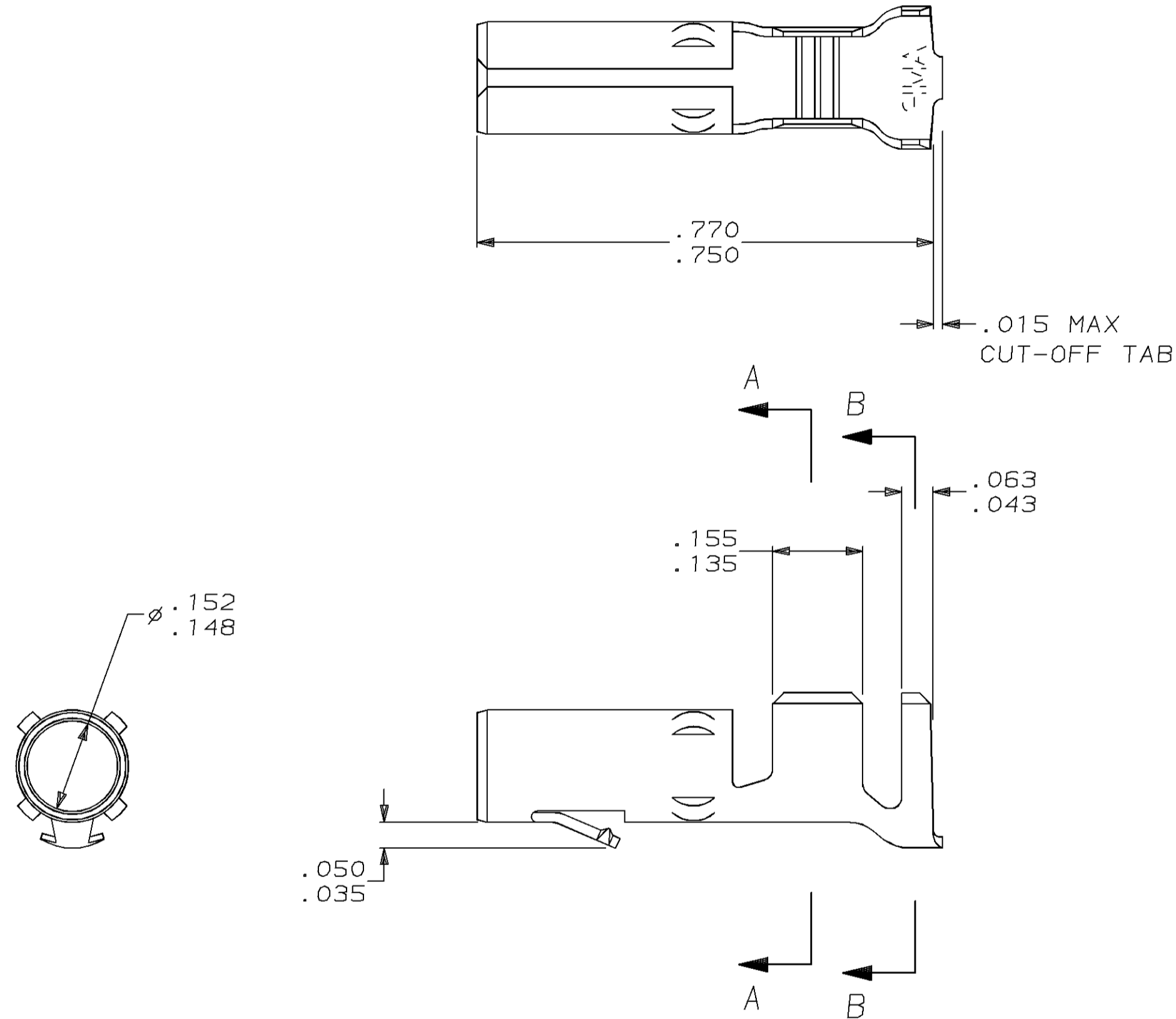


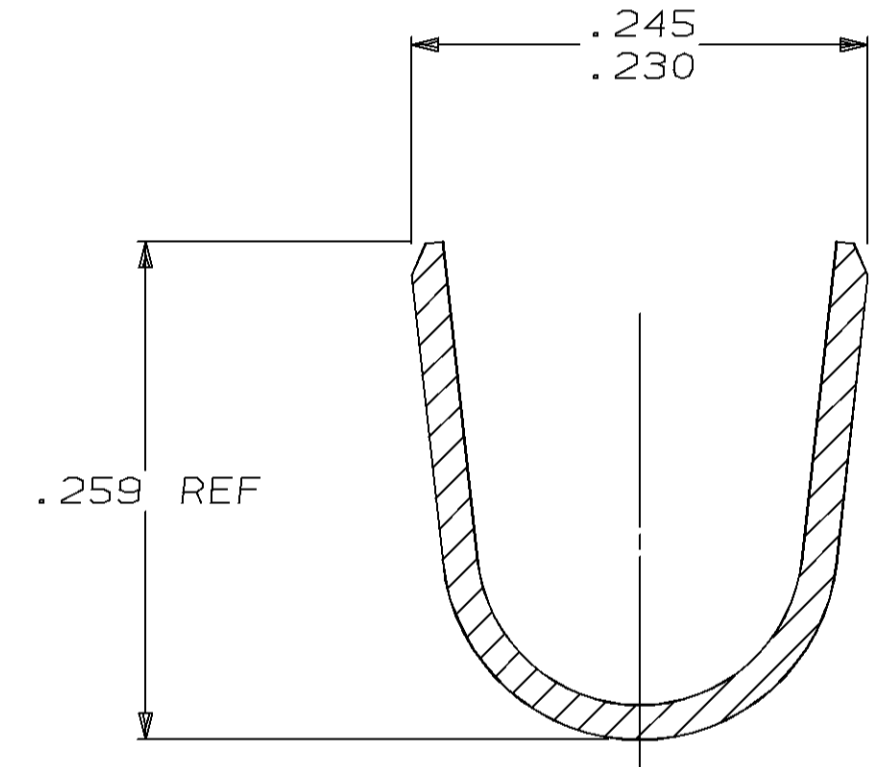
THIS DRAWING IS UNPUBLISHED. RELEASED FOR PUBLICATION
 © COPYRIGHT 19 BY AMP INCORPORATED. ALL RIGHTS RESERVED.

Loc		DIST		REVISIONS			
P	LTR	DESCRIPTION		DATE	DWN	APVD	
CM	53	D		REACT & REDWN PER EC 0730-0171-96	6-25-96	BL	RS

1. WIRE RANGE: 12-10 (3-6mm²) AWG
 INSULATION RANGE: .185 MAX.



SECTION A-A
SCALE 10:1

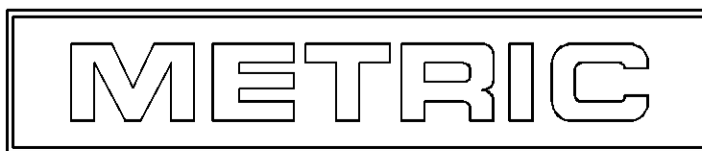


SECTION B-B
SCALE 10:1

TIN	.018 BRASS	61252-1
FINISH	MATERIAL	PART NO

IN	MM	IN	MM	IN	MM	IN	MM
.050	1.27	.156	3.96	.245	6.22		
.043	1.09	.155	3.94	.230	5.84		
.035	0.89	.152	3.86	.215	5.46		
.018	0.46	.148	3.76	.185	4.70	.770	19.56
.015	0.38	.135	3.43	.175	4.45	.750	19.05
.005	0.13	.063	1.60	.160	4.06	.259	6.58
IN	MM	IN	MM	IN	MM	IN	MM

CONVERSION TABLE



THIS DRAWING IS A CONTROLLED DOCUMENT.

DIMENSIONS IN INCHES	TOLERANCES UNLESS OTHERWISE SPECIFIED:	DWN B. LEWIS 6-25-96	AMP Incorporated Harrisburg, PA 17105-3608
	0 PLC ±	CHK R. SWING 6-25-96	
	1 PLC ±	APVD C. MARTIN 6-25-96	
	2 PLC ±	NAME	
	3 PLC ±.005	PRODUCT SPEC	
4 PLC ±	APPLICATION SPEC	SOCKET, LOOSE PIECE, .156 MATE-N-LOK™	
ANGLES ±	FINISH PRE-TIN	SIZE A2	CAGE CODE 00779
MATERIAL BRASS		WEIGHT -	DRAWING NO C-61252
		CUSTOMER DRAWING	SCALE 5:1 SHEET 1 OF 1 REV D