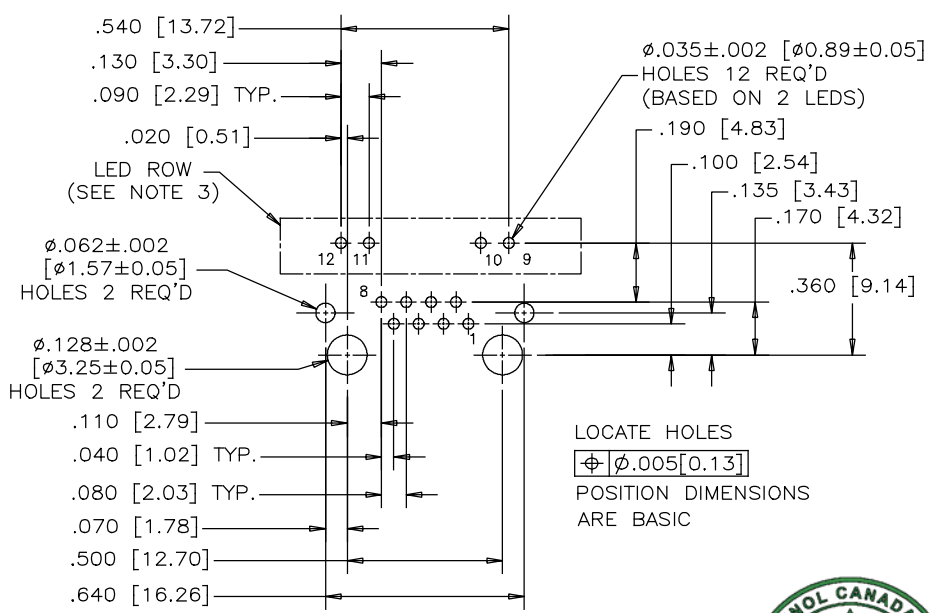
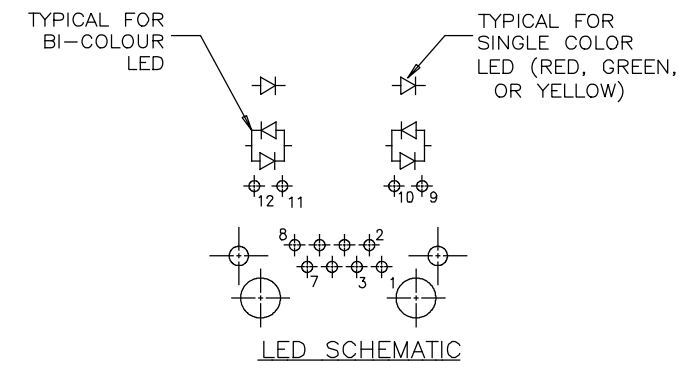
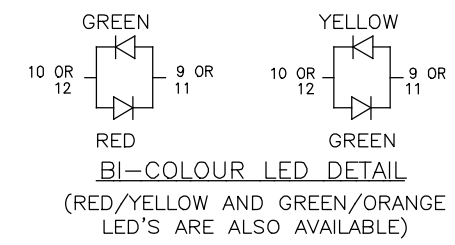
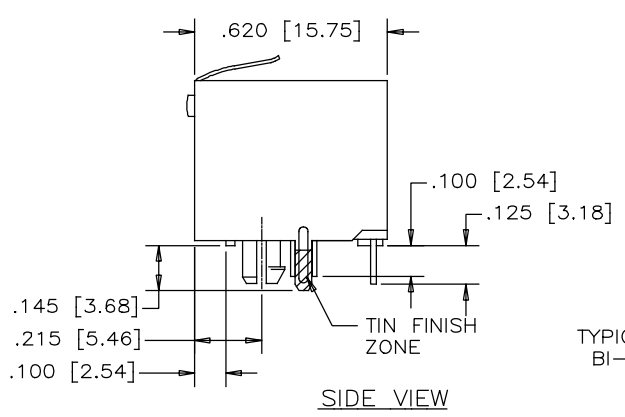
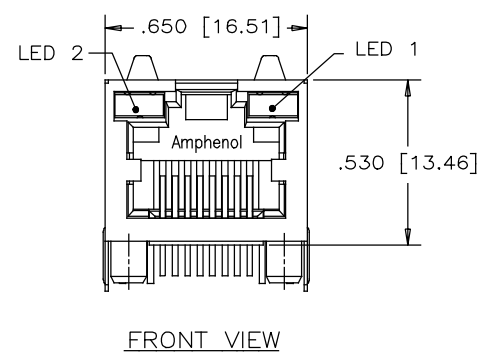
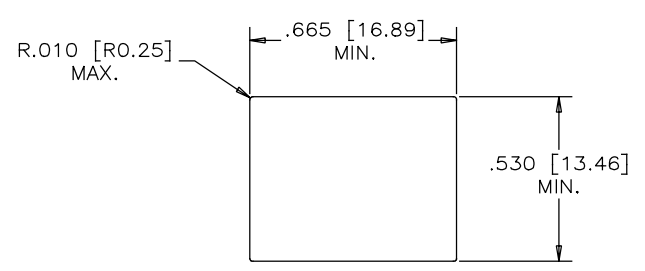


REVISIONS			
REV	DESCRIPTION, ECN, EAR NO.	DATE	APP'D
A	PROPOSAL	MAR18/13	L.CHAN
B	CHANGE TO TIN FINISH	JUN03/17	L.CHAN



LOCATE HOLES  
 $\text{Ø} \phi .005 [0.13]$   
 POSITION DIMENSIONS  
 ARE BASIC



NOTES:

- MATERIALS:**  
 PLASTIC HOUSING: HIGH TEMPERATURE THERMOPLASTIC  
 FLAMMABILITY RATING UL 94V-0, COLOUR: BLACK  
  
 CONTACTS: PHOSPHOR BRONZE  
 PLATING: 15 μ" [0.38 MICRONS]  
 MIN. GOLD ON MATING SURFACES.  
 50 μ" [1.27 MICRONS]  
 MIN. NICKEL UNDERPLATE  
 100 μ" [2.54 MICRONS]  
 MIN. MATTE TIN ON CONTACT TAILS.  
  
 SHIELD: STAINLESS STEEL WITH TIN FINISH ON SOLDER TAIL
- RECOMMENDED SOLDERING TEMPERATURE:**  
 WAVE SOLDERING AT 260°C MAXIMUM FOR 5 SEC MAXIMUM.
- P.C.B HOLE LAYOUT:**  
 AMPHENOL PART NUMBER RJHSE-G38X P.C.B LAYOUT LED HOLES ARE OPTIONAL.
- PART NUMBER: RJHSE-G38X**  
 REFER TO LED OPTIONS DRAWING FOR ORDERING CODES

UNLESS SPECIFIED OTHERWISE	DRAWN <b>AMY.Z</b>	DATE <b>MAR18/13</b>	<b>Amphenol Canada Corp.</b> www.amphenolcanada.com
PRIMARY UNITS INCH	CHECKED <b>L.CHAN</b>	DATE <b>MAR18/13</b>	
SECONDARY MILLIMETER	M.E. APP'D		TITLE
REFERENCE IN PARENTHESES	Q.A. APP'D		HIGH SPEED, RJ45, MODULAR JACK, 8 POSITION, 8 CONTACTS, SHIELDED WITH LED'S OPTIONS - RoHS COMPLIANT
GENERAL TOLERANCES	DWG APPR.		DWG. NO.
1 DECIMAL PLACE ±0.025	ENG. REL. NO.		P-RJHSE-G38X
2 DECIMAL PLACES ±0.020	REF.		REV <b>B</b>
3 DECIMAL PLACES ±0.015	THIRD ANGLE PROJECTION	DO NOT SCALE DRAWING	CODE ID NO. 03554   DWG SIZE: C   SCALE: N/A   SHEET 1 OF 1
ANGULAR DEGREES ±1.0°			