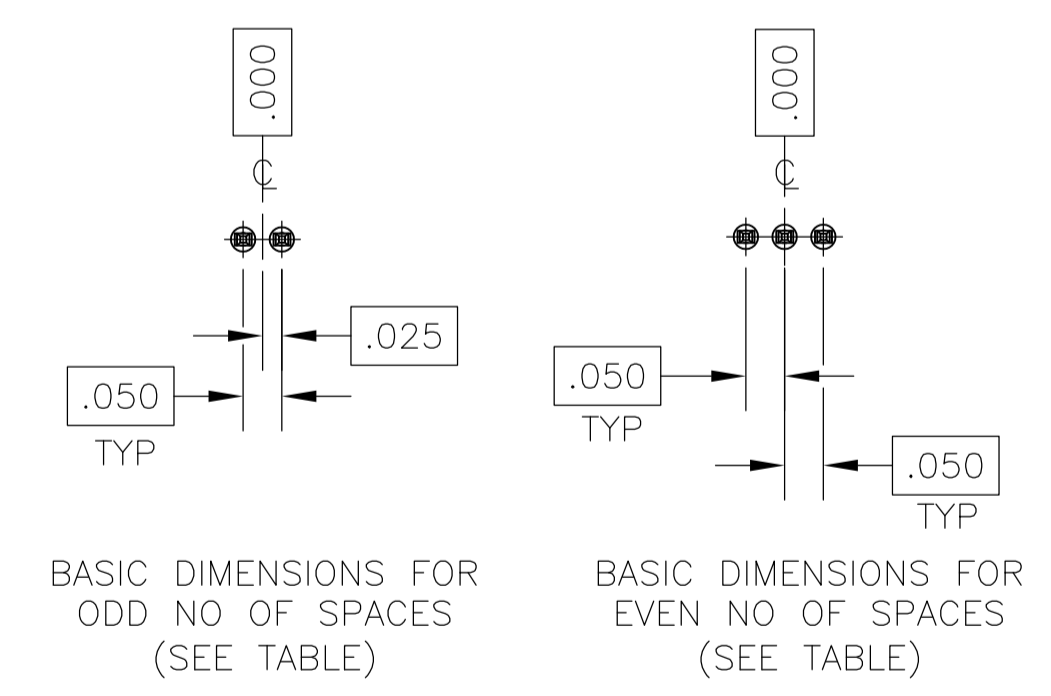
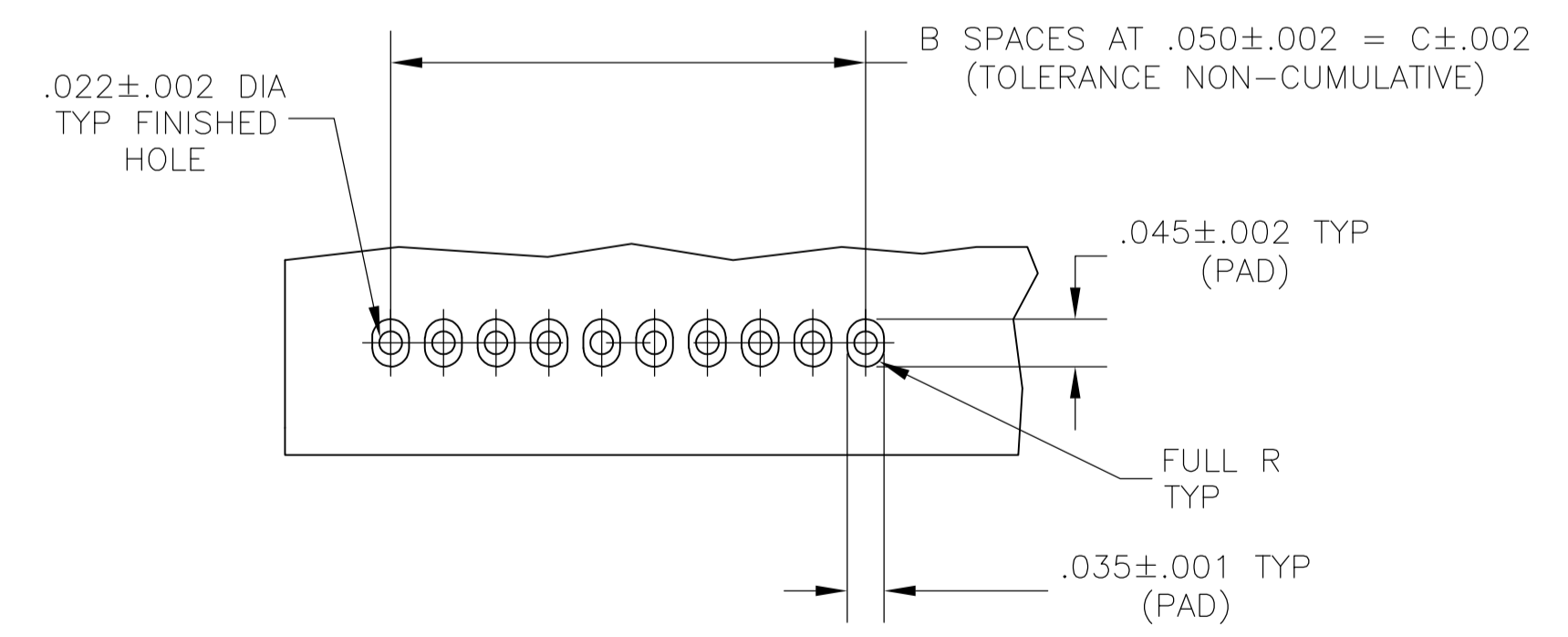
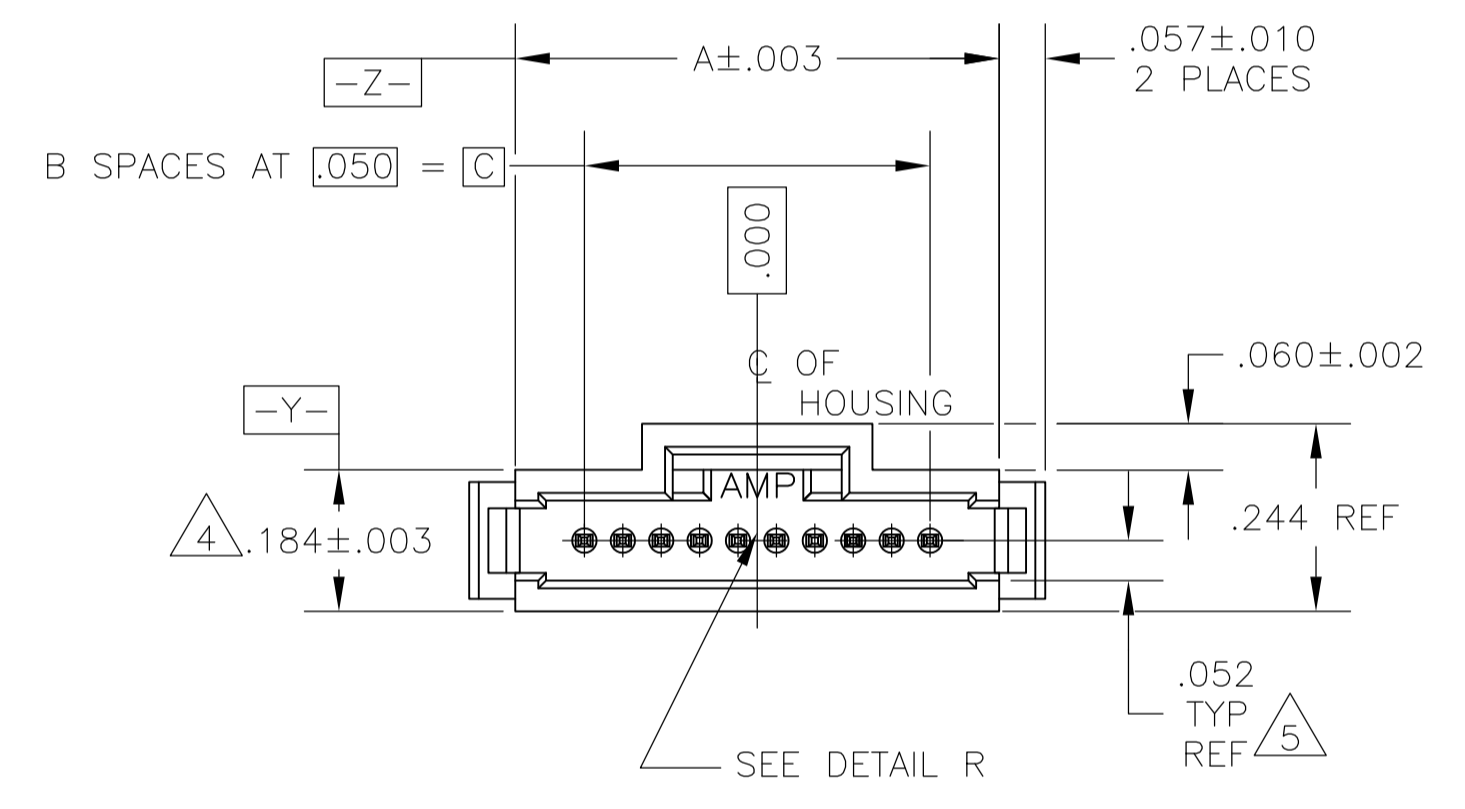
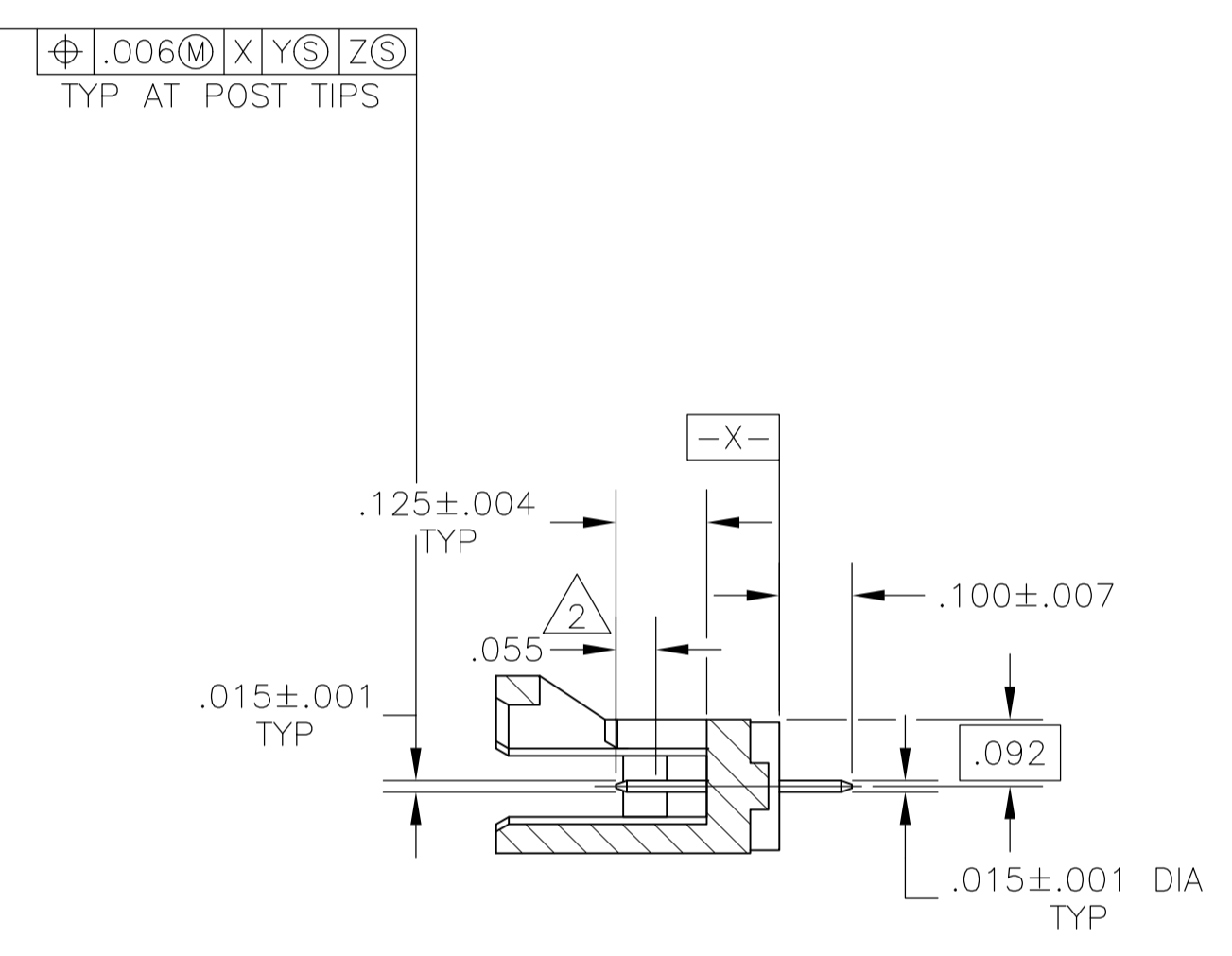
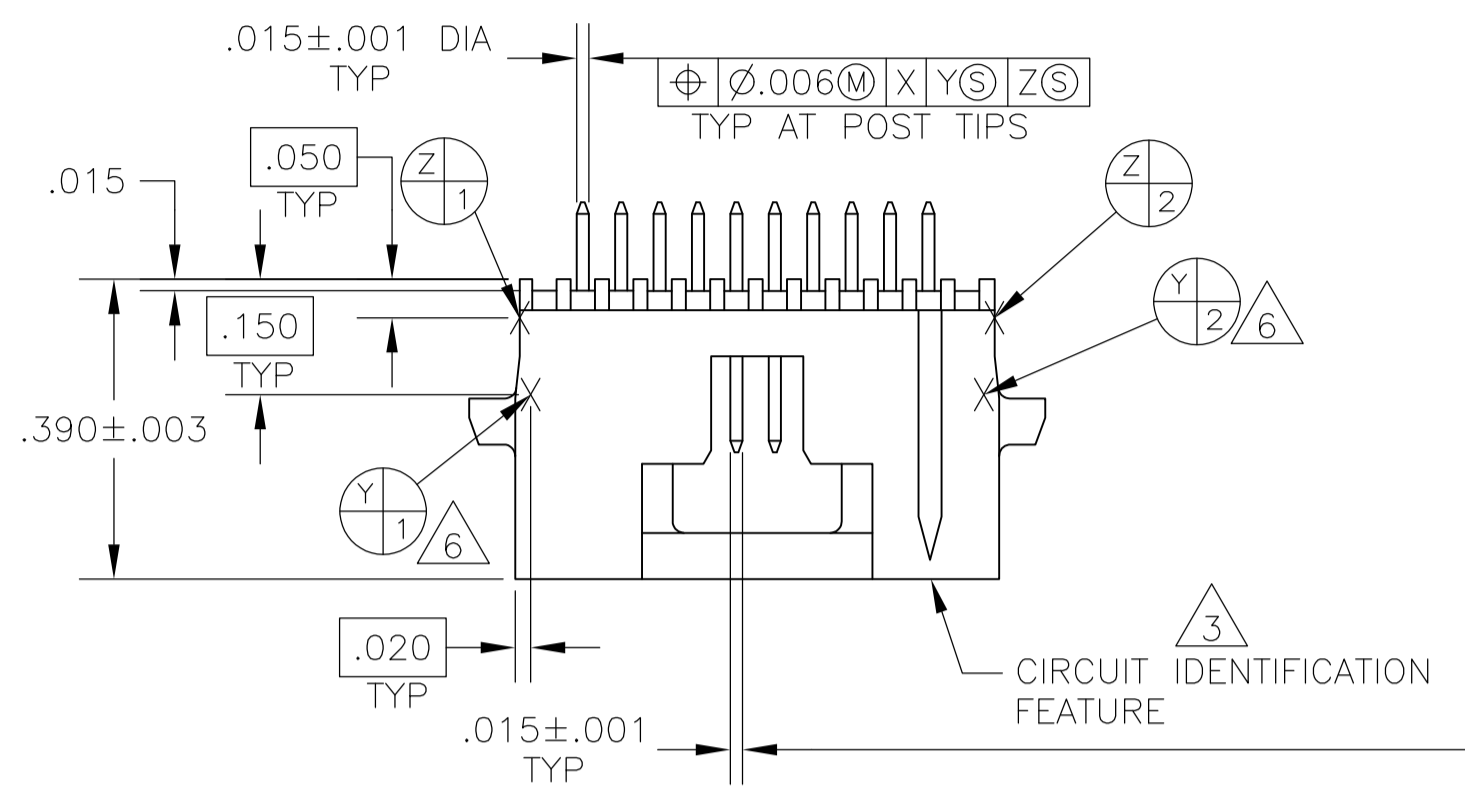


- ① CONTACT AREAS PLATED WITH .000030 GOLD,SOLDER TAILS PLATED WITH .000150 TIN-LEAD,ALL OVER .000050 NICKEL
- ② POINT OF MEASUREMENT FOR GOLD THICKNESS
- ③ CIRCUIT IDENTIFICATION FEATURE OMITTED ON 4,5,6 AND 7 POSITION HEADER ASSEMBLIES
- ④ DIMENSION APPLIES AT BASE OF SHROUD
- ⑤ THE NOTED DIMENSIONS APPLY AT THE INTERSECTION OF THE POST & HOUSING
- ⑥ $\begin{matrix} Y \\ 3 \end{matrix}$ $\begin{matrix} Y \\ 4 \end{matrix}$ ARE LOCATED THE SAME AS $\begin{matrix} Y \\ 1 \end{matrix}$ $\begin{matrix} Y \\ 2 \end{matrix}$ EXCEPT ON OPPOSITE SIDE OF HOUSING.
- ⑦ CONTACT AREAS PLATED WITH .000030 GOLD,SOLDER TAILS PLATED WITH .000150 TIN,ALL OVER .000050 NICKEL
- ⑧ FINISH: .000001 MIN GOLD ON GOLD PLATED AREA. .000150-.000250 MATTE TIN-LEAD ON TIN PLATED AREA. UNDER PLATING TO BE .000050-.000100 NICKEL ON ENTIRE CONTACT.
- ⑨ PRELIMINARY - NOT FOR PRODUCTION
- ⑩ OBSOLETE
- ⑪ OBSOLETE PARTS: OBSOLETE CIS STREAMLINING PER D.RENAUD/D.SINISI
- ⑫ SUPERSEDED
- ⑬ FINISH: .000001 MIN GOLD ON GOLD PLATED AREA. .000150-.000250 MATTE TIN ON TIN PLATED AREA. UNDER PLATING TO BE .000050-.000100 NICKEL ON ENTIRE CONTACT.



⑧	1.250	25	1.430	26	⑨	4-104071-0
	2.450	49	2.630	50	⑨	3-104071-9
	2.200	44	2.380	45	⑨	3-104071-8
	1.950	39	2.130	40	⑨	3-104071-7
	1.750	35	1.930	36	⑨	3-104071-6
	1.300	26	1.480	27	⑨	3-104071-5
	1.050	21	1.230	22	⑨	3-104071-4
	.800	16	.980	17	⑨	3-104071-3
	.600	12	.780	13	⑨	3-104071-2
	.550	11	.730	12	⑨	3-104071-1
	.350	7	.530	8	⑨	3-104071-0
	.300	6	.480	7	⑨	2-104071-9
	.250	5	.430	6	⑨	2-104071-8
①	.150	3	.330	4	⑨	2-104071-7
	1.450	29	1.630	30	⑩	2-104071-6
	1.200	24	1.380	25	⑩	2-104071-5
	.950	19	1.130	20	⑩	2-104071-4
	.700	14	.880	15	⑩	2-104071-3
	.200	4	.380	5	⑩	2-104071-2
	.450	9	.630	10	⑩	2-104071-1
	1.250	25	1.430	26	⑩	2-104071-0
	2.450	49	2.630	50	⑪	1-104071-9
	2.200	44	2.380	45	⑪	1-104071-8
	1.950	39	2.130	40	⑪	1-104071-7
	1.750	35	1.930	36	⑪	1-104071-6
	1.300	26	1.480	27	⑪	1-104071-5
FINISH	1.050	21	1.230	22	⑩	1-104071-4
	.800	16	.980	17	⑩	1-104071-3
	.600	12	.780	13	⑩	1-104071-2
	.550	11	.730	12	⑩	1-104071-1
	.350	7	.530	8	⑩	1-104071-0
	.300	6	.480	7	⑩	104071-9
	.250	5	.430	6	⑩	104071-8
	.150	3	.330	4	⑩	104071-7
	1.450	29	1.630	30	⑩	104071-6
	1.200	24	1.380	25	⑩	104071-5
	.950	19	1.130	20	⑩	104071-4
	.700	14	.880	15	⑩	104071-3
	.200	4	.380	5	⑩	104071-2
.450	9	.630	10	⑩	104071-1	
	C	B	A	NO OF POSN	PART NUMBER	

THIS DRAWING IS A CONTROLLED DOCUMENT.

DIMENSIONS: INCHES

TOLERANCES UNLESS OTHERWISE SPECIFIED:

0. PLC	± .005
1. PLC	± .005
2. PLC	± .005
3. PLC	± .005
4. PLC	± .005
ANGLES	± .005

MATERIAL: HOUSING:THERMOPLASTIC COLOR:BLACK CONTACT: COPPER ALLOY

FINISH: SEE TABLE

DIN: K. HELM 12-19-88

CHK: H. MOILL 12-19-88

APVD: R. DURBIN 12-19-88

NAME: HEADER ASSEMBLY, VERTICAL, SINGLE ROW, W/SIDE & END LATCHES, AMPMODU@System 50

PRODUCT SPEC: 108-1093

APPLICATION SPEC: 114-25031

SIZE: A1

WEIGHT: 1.14

CAGE CODE: 00779

DRAWING NO: 104071

RESTRICTED TO: CUSTOMER DRAWING

SCALE: 4:1


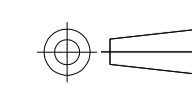
SHEET: 1 OF 2

REV: P

LOC		DIST		REVISIONS				
P	LTR	DESCRIPTION	DATE	DWN	APVO			
-	-	SEE SHEET 1	-	-	-			

1.3	1.250	25	1.430	26	9	9-104071-0
	2.450	49	2.630	50	9	8-104071-9
	2.200	44	2.380	45	9	8-104071-8
	1.950	39	2.130	40	9	8-104071-7
	1.750	35	1.930	36	9	8-104071-6
	1.300	26	1.480	27	9	8-104071-5
	1.050	21	1.230	22	9	8-104071-4
	.800	16	.980	17	9	8-104071-3
	.600	12	.780	13	9	8-104071-2
	.550	11	.730	12	9	8-104071-1
	.350	7	.530	8	9	8-104071-0
	.300	6	.480	7	9	7-104071-9
	.250	5	.430	6	9	7-104071-8
	.150	3	.330	4		7-104071-7
	1.450	29	1.630	30	9	7-104071-6
	1.200	24	1.380	25	9	7-104071-5
	.950	19	1.130	20		7-104071-4
	.700	14	.880	15	9	7-104071-3
	.200	4	.380	5	9	7-104071-2
	.450	9	.630	10	9	7-104071-1
7	1.250	25	1.430	26	11	7-104071-0
	2.450	49	2.630	50		6-104071-9
	2.200	44	2.380	45	11	6-104071-8
	1.950	39	2.130	40		6-104071-7
	1.750	35	1.930	36		6-104071-6
	1.300	26	1.480	27	11	6-104071-5
	1.050	21	1.230	22		6-104071-4
	.800	16	.980	17		6-104071-3
	.600	12	.780	13	11	6-104071-2
	.550	11	.730	12		6-104071-1
	.350	7	.530	8		6-104071-0
	.300	6	.480	7	11	5-104071-9
	.250	5	.430	6		5-104071-8
	.150	3	.330	4		5-104071-7
	1.450	29	1.630	30		5-104071-6
	1.200	24	1.380	25		5-104071-5
	.950	19	1.130	20		5-104071-4
	.700	14	.880	15		5-104071-3
	.200	4	.380	5		5-104071-2
	.450	9	.630	10		5-104071-1
FINISH	C	B	A	NO OF POSN	PART NUMBER	

THIS DRAWING IS A CONTROLLED DOCUMENT.

DIMENSIONS: INCHES	TOLERANCES UNLESS OTHERWISE SPECIFIED:	DWN K. HELM 12-19-88	APVO R. DURBIN 12-19-88	 TE Connectivity	
 0. PLC ± - 1. PLC ± - 2. PLC ± - 3. PLC ± .005 4. PLC ± - ANGLES ± -	MATERIAL FINISH WEIGHT -	NAME HEADER ASSEMBLY, VERTICAL, SINGLE ROW, W/SIDE & END LATCHES, AMPMODU System 50	SIZE A1	CAGE CODE 00779	DRAWING NO 104071
	APPLICATION SPEC 114-25031	RESTRICTED TO -	CUSTOMER DRAWING	SCALE 4:1	SHEET 2 OF 2

Mouser Electronics

Authorized Distributor

Click to View Pricing, Inventory, Delivery & Lifecycle Information:

[TE Connectivity:](#)

[104071-1](#)