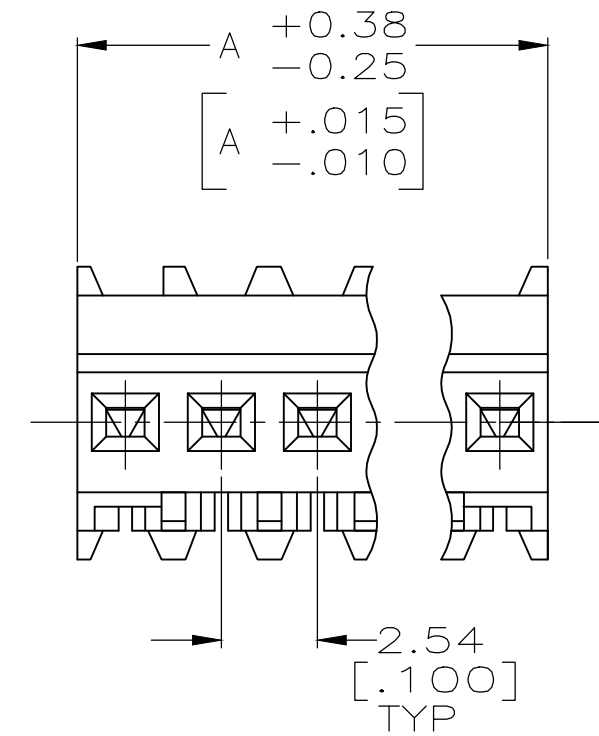
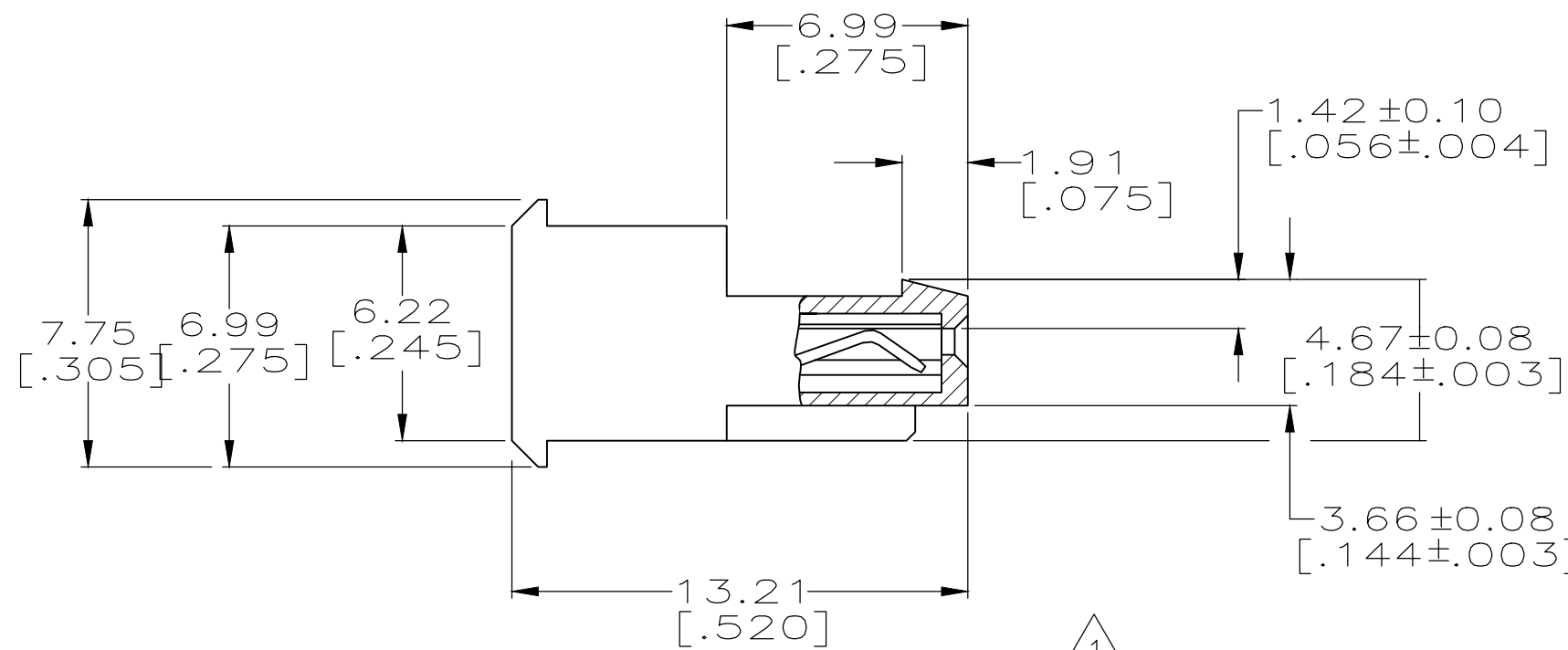
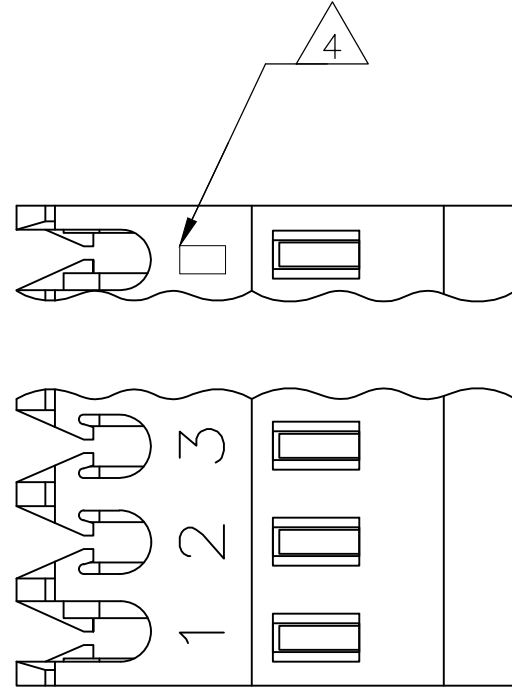


THIS DRAWING IS UNPUBLISHED. RELEASED FOR PUBLICATION
 © COPYRIGHT - By - TE CONNECTIVITY ALL RIGHTS RESERVED.

| LOC | DIST | REVISIONS | | | | | |
|-----|------|-----------|-----|---------------|---------|-----|------|
| CM | 00 | P | LTR | DESCRIPTION | DATE | DWN | APVD |
| | | S1 | | ECO-14-010907 | 06SEP14 | KR | OC |



- 1 MATERIAL: CONNECTOR - NYLON UL94V-2. (RED)
CONTACTS - 0.30[.012] THICK COPPER ALLOY
BRIGHT TIN-LEAD .00203[.000080] MIN THICKNESS
FOR 640620-2 THRU 2-640620-8.
MATTE WHISKER MITIGATED TIN .00203[.000080] MIN THICKNESS OVER
NICKEL UNDERPLATE FOR 3-640620-2 THRU 5-640620-8.
- 2 CONTACTS ACCEPT 22 AWG WIRE WITH 1.52[.060] MAX
INSULATION DIAMETER.
- 3 CONTACTS MUST ACCEPT 0.64#0.03[.025#.762]
POST AND REMAIN LOCKED IN POSITION.
- 4 IDENTIFICATION NUMBER FOR LAST CIRCUIT MAY
NOT APPEAR ON ALL ASSEMBLIES.
- 5 DIMENSIONS IN BRACKETS ARE IN INCHES.
- 6 HOUSING FEATURES ARE: FEED THRU WITH LOCKING
RAMP.
- 7 OBSOLETE PARTS: OBSOLETE CIS STREAMLINING PER D.RENAUD/D.SINISI

| | YES | DIM A | NO. OF CIRCUITS | PART NO. | |
|----------|-----|--------------|-----------------|-----------------------|--------------|
| D | YES | 71.12[2.800] | 28 | 5-640620-8 | |
| | YES | 68.58[2.700] | 27 | 5-640620-7 | |
| | YES | 66.04[2.600] | 26 | 5-640620-6 | |
| | YES | 63.50[2.500] | 25 | 5-640620-5 | |
| | YES | 60.96[2.400] | 24 | 5-640620-4 | |
| | YES | 58.42[2.300] | 23 | 5-640620-3 | |
| | YES | 55.88[2.200] | 22 | 5-640620-2 | |
| | YES | 53.34[2.100] | 21 | 5-640620-1 | |
| | YES | 50.80[2.000] | 20 | 5-640620-0 | |
| | YES | 48.26[1.900] | 19 | 4-640620-9 | |
| | YES | 45.72[1.800] | 18 | 4-640620-8 | |
| | YES | 43.18[1.700] | 17 | 4-640620-7 | |
| | YES | 40.64[1.600] | 16 | 4-640620-6 | |
| | YES | 38.10[1.500] | 15 | 4-640620-5 | |
| C | YES | 35.56[1.400] | 14 | 4-640620-4 | |
| | YES | 33.02[1.300] | 13 | 4-640620-3 | |
| | YES | 30.48[1.200] | 12 | 4-640620-2 | |
| | YES | 27.94[1.100] | 11 | 4-640620-1 | |
| | YES | 25.40[1.000] | 10 | 4-640620-0 | |
| | YES | 22.86[.900] | 9 | 3-640620-9 | |
| | YES | 20.32[.800] | 8 | 3-640620-8 | |
| | YES | 17.78[.700] | 7 | 3-640620-7 | |
| | YES | 15.24[.600] | 6 | 3-640620-6 | |
| | YES | 12.70[.500] | 5 | 3-640620-5 | |
| | YES | 10.16[.400] | 4 | 3-640620-4 | |
| | YES | 7.62[.300] | 3 | 3-640620-3 | |
| | YES | 5.08[.200] | 2 | 3-640620-2 | |
| | NO | 71.12[2.800] | 28 | 2-640620-8 | SUPERSEDED |
| | NO | 68.58[2.700] | 27 | 2-640620-7 | |
| | NO | 66.04[2.600] | 26 | 2-640620-6 | |
| | NO | 63.50[2.500] | 25 | 2-640620-5 | |
| B | NO | 60.96[2.400] | 24 | 2-640620-4 | |
| | NO | 58.42[2.300] | 23 | 2-640620-3 | |
| | NO | 55.88[2.200] | 22 | 2-640620-2 | |
| | NO | 53.34[2.100] | 21 | 2-640620-1 | |
| | NO | 50.80[2.000] | 20 | 2-640620-0 | |
| | NO | 48.26[1.900] | 19 | 1-640620-9 | |
| | NO | 45.72[1.800] | 18 | 1-640620-8 | SUPERSEDED 7 |
| | NO | 43.18[1.700] | 17 | 1-640620-7 | OBSOLETE |
| | NO | 40.64[1.600] | 16 | 1-640620-6 | |
| | NO | 38.10[1.500] | 15 | 1-640620-5 | |
| | NO | 35.56[1.400] | 14 | 1-640620-4 | SUPERSEDED 7 |
| | NO | 33.02[1.300] | 13 | 1-640620-3 | |
| | NO | 30.48[1.200] | 12 | 1-640620-2 | |
| | NO | 27.94[1.100] | 11 | 1-640620-1 | SUPERSEDED 7 |
| | NO | 25.40[1.000] | 10 | 1-640620-0 | |
| | NO | 22.86[.900] | 9 | 640620-9 | |
| | NO | 20.32[.800] | 8 | 640620-8 | |
| A | NO | 17.78[.700] | 7 | 640620-7 | SUPERSEDED 7 |
| | NO | 15.24[.600] | 6 | 640620-6 | |
| | NO | 12.70[.500] | 5 | 640620-5 | |
| | NO | 10.16[.400] | 4 | 640620-4 | |
| | NO | 7.62[.300] | 3 | 640620-3 | |
| | NO | 5.08[.200] | 2 | 640620-2 | |
| LEADFREE | | DIM A | NO. OF CIRCUITS | PART NO. | |

| | | | | |
|---|---------------------|----------------------------------|---|--------------------|
| THIS DRAWING IS A CONTROLLED DOCUMENT. | | DWN S. CARPENTER 11JUN2003 | | |
| DIMENSIONS: mm [INCHES] | | CHK D. BOSSI 11JUN2003 | | |
| TOLERANCES UNLESS OTHERWISE SPECIFIED: | | APVD D. BOSSI 11JUN2003 | NAME MTA 100 CONNECTOR ASSEMBLY, 22 AWG, STANDARD | |
| 0 PLC ± - | 1 PLC ± - | PRODUCT SPEC 108-1050 | SIZE A2 | CAGE CODE 00779 |
| 2 PLC ± - | 3 PLC ± 0.13 [.005] | APPLICATION SPEC 114-1019 | DRAWING NO C=640620 | RESTRICTED TO - |
| 4 PLC ± - | ANGLES ± - | WEIGHT - | SCALE 5:1 | SHEET 1 of 1 |
| MATERIAL 1 | FINISH 1 | CUSTOMER DRAWING | REV S1 | |

Mouser Electronics

Authorized Distributor

Click to View Pricing, Inventory, Delivery & Lifecycle Information:

[TE Connectivity:](#)

[4-640620-4](#)