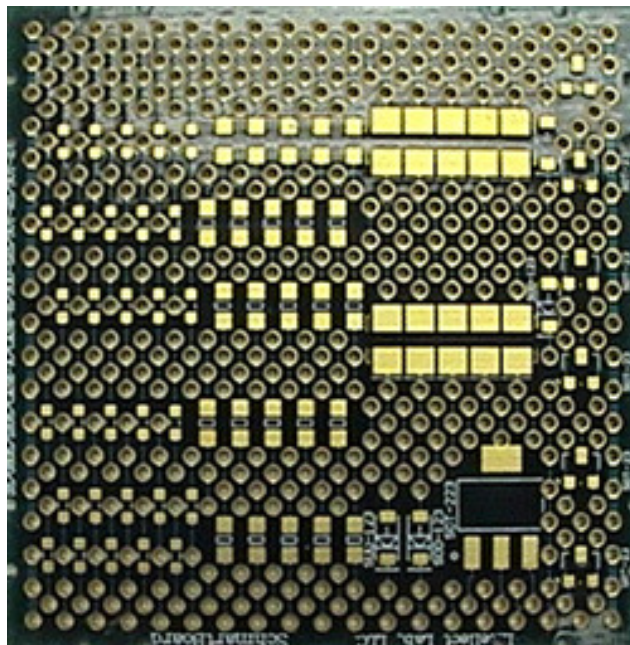
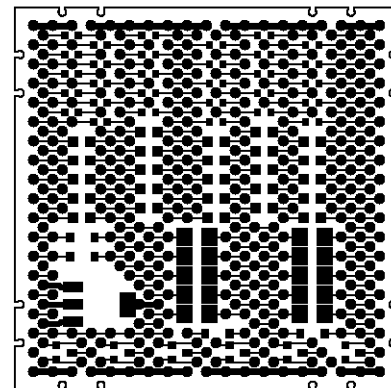


# 201-0003-01 Discrete Board



Actual Size



0603/0805/1206/SOD-123/sot-23/SOT-223 2" X 2" Grid

Support up to max. 55 pcs. of 0603 package, max. 35 pcs. Of 0805 package, 4 pcs. of SOD-123 package, 1 pcs. of SOT-223 package, 6 pcs. of SOT-23 package, 10 pcs. Of CASE-B package and some thru hole passive components. 12 ground holes are connected a copper plane on the bottom side. (Not Schmartboard|ez version)

### Related Part Numbers:

910-0003-01: 10 Pack of 201-0003-01 Schmartboards

# Schmartboard|ez Surface Mount Family



Schmartboard, Inc.  
37423 Fremont Blvd.  
Fremont, CA 94536

510-744-9900(P)  
510-744-9909(F)  
<http://www.schmartboard.com>  
<http://www.facebook.com/Schmartboard>  
<http://www.twitter.com/Schmartboard>

# Mouser Electronics

Authorized Distributor

Click to View Pricing, Inventory, Delivery & Lifecycle Information:

[SchmartBoard:](#)

[201-0003-01](#) [910-0003-01](#)