



NOTE 1: MATERIAL : BODY : THERMOPLASTIC UL94-V0. 
: CONTACT : COPPER ALLOY.

NOTE 2: FOR PLATING PERFORMANCE REFER DRAWING # 10159408. 


NOTE 3: GENERAL CHARACTERISTICS ACCORDING TO GS-12-446


NOTE 4: ONE CENTER PEG FOR HOLD DOWN FORCE

NOTE 5: REAR END SUPPORT FOR BETTER ASSY ON PCB

NOTE 6: STANDARD PACKAGING IS TUBE
MARKING 10101826-XXLF

NOTE 7: SPECIFIC REQUIREMNT DESIGNATIONS, FOR THE ROW AND COLUMN
DESIGNATION MARKING ROTATED 180 DEGREES

NOTE 8: THE PRODUCT MEETS EUROPEAN UNION DIRECTIVES AS DESCRIBED IN
GS-47-0004. 

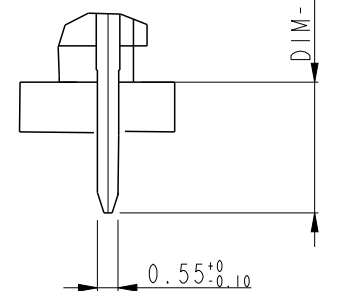
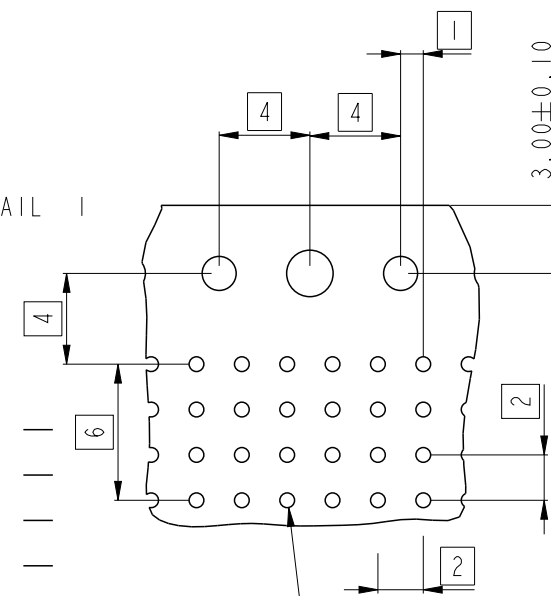
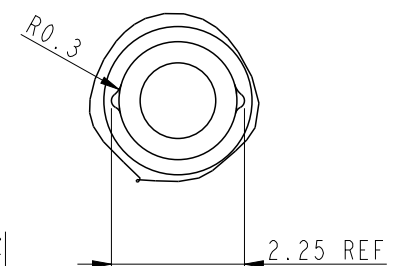
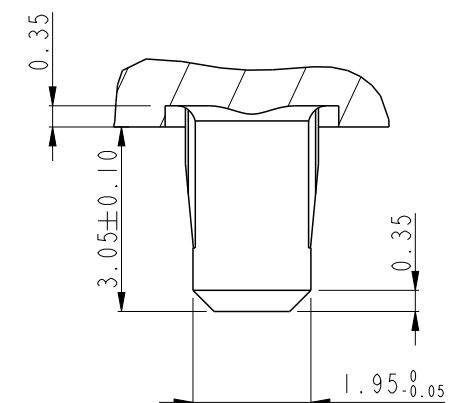
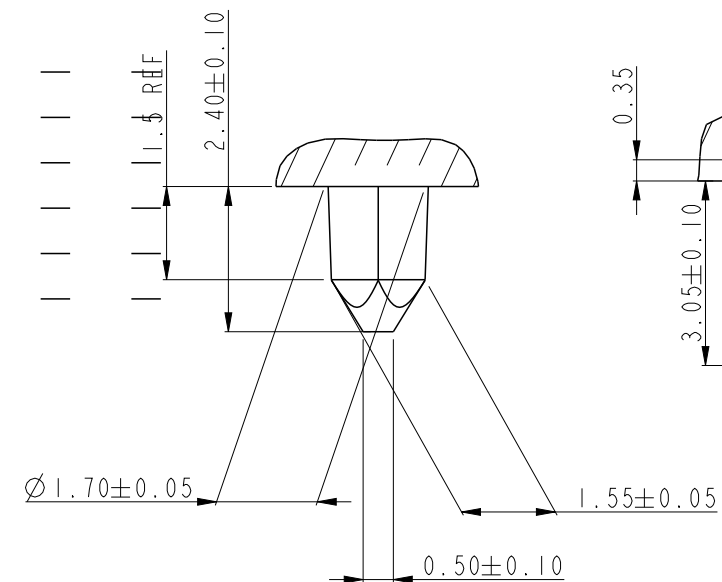
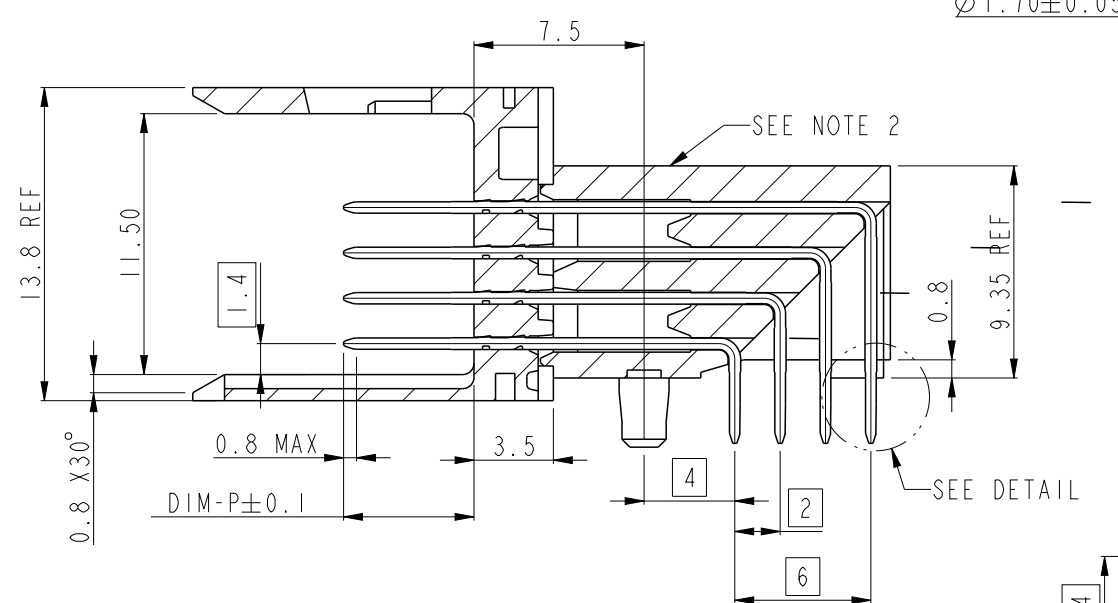
NOTE 9: A  SYMBOL WILL BE NEXT TO ANY DIMENSION, VIEW, OR NOTE
WHICH HAS BEEN MODIFIED WITH THE CURRENT DRAWING REVISION.

NOTE 10: 10101826-YYLF.

Technical drawing of a rectangular plate with the following dimensions and features:

- Overall width: 30.76
- Overall height: 6
- Distance from top edge to the center of the top hole: 1.5
- Minimum distance between the two holes: 2.5 MIN
- Distance from the center of the bottom hole to the right edge: 7.3 ± 0.1

The plate features two rectangular holes with internal slots, a central vertical slot, and four circular holes (two on the top and two on the bottom) located near the right edge.



Creo File:ELX-WC-A3C,REV F,2020-12-21