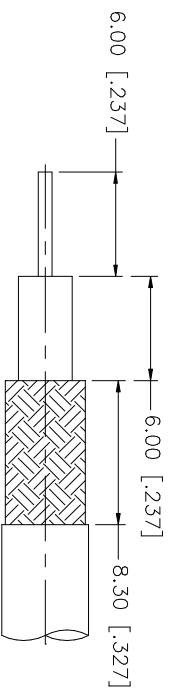
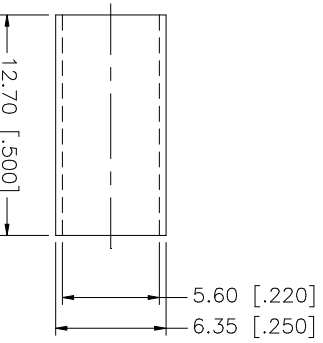
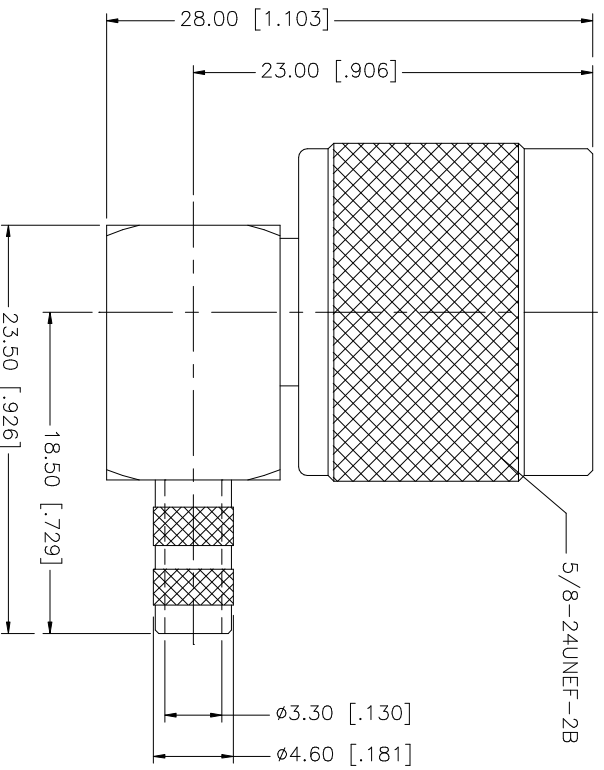


REV.	DATE	DESCRIPTION
NC	08/23/99	INITIAL RELEASE
A	11/26/05	UPDATE DRAWING FORMAT



RECOMMENDED  
CABLE STRIPPING DIM'S

QTY	FINISH	MATERIAL	DESCRIPTION
1	NICKEL	BRASS	BODY
1	NATURAL	TEFLON	INSULATOR
1	NICKEL	COPPER	FERRULE

APPROVALS	DATE
DRAWN G.R.S.	11/26/05
CHECKED	
ISSUED	

UNLESS OTHERWISE SPECIFIED DIMENSIONS ARE IN MILLIMETERS (IN PARENTHESES) PER ANSI Y14.5M-1993 AND FOR STRIPPER RESERVE ONLY. TOLERANCES FOR MILLIMETERS ARE:	UNLESS OTHERWISE SPECIFIED DIMENSIONS ARE IN INCHES PER ANSI Y14.5M-1993 AND FOR STRIPPER RESERVE ONLY. TOLERANCES FOR INCHES ARE:
0.5 - 8mm ± 0.20mm	.020 - .315 ± 0.007"
8 - 30mm ± 0.40mm	.315 - 1.180 ± 0.015"
30 - 120mm ± 0.50mm	1.180 - 4.724 ± 0.020"

DO NOT SCALE DRAWING	CAD FILE	DWG. NO.	REV.	SIZE	SCALE
	C:/172/172215.DWG	172215.DWG	A	A	N/A

APPROVALS	DATE	PART DESCRIPTION	PART NO.
		<b>Amphenol Connex</b>	172215
		N R/A CRIMP PLUG	
		(FOR LMR200)	

# Mouser Electronics

Authorized Distributor

Click to View Pricing, Inventory, Delivery & Lifecycle Information:

[Amphenol:](#)

[172215](#)