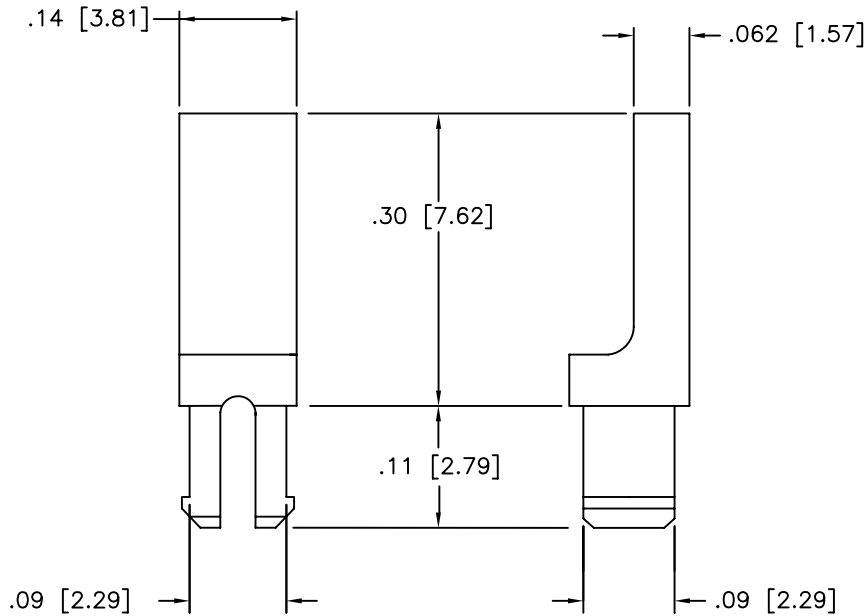


THIS DRAWING AND THE INFORMATION SET FORTH HEREON ARE THE PROPERTY OF TYCO ELECTRONICS CORPORATION AND ARE TO BE HELD IN TRUST AND CONFIDENCE. PUBLICATION, DUPLICATION, DISCLOSURE OR USE FOR ANY PURPOSE NOT EXPRESSLY AUTHORIZED IN WRITING BY TYCO ELECTRONICS CORPORATION IS PROHIBITED.


If this document is printed it becomes uncontrolled.
Check for the latest revision.

REVISION			
REV	DESCRIPTION	DATE	APPROVED
E	REVISED PER ECN T-18229	93-JUN-01	J.BLAIR
F	REDRAWN PER DCR# C040886	August/12/04	M.HIGGY





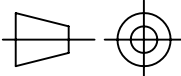

NOTES:

1. PART USED FOR KEYING ALL MTC CONNECTOR ASSEMBLIES.

 WEIGHT: 0.0002 Lbs. [0.091 gm.] MAXIMUM.

SPECIFICATION CONTROL DRAWING

© 2004 Tyco Electronics Corporation.
All rights reserved

ITEM	QTY.	PART NO	DWG OR SPEC NO	DESCRIPTION
PARTS LIST				
UNLESS OTHERWISE SPECIFIED DIMENSIONS ARE INCHES. METRIC DIMENSIONS ARE IN BRACKETS.		DRAWN ZS.ORBAN	DATE August/4/04	 TYCO ELECTRONICS 300 Constitution Drive Menlo Park, CA. 94025 USA 
DECIMAL TOLERANCES		APPROVED M.HIGGY	DATE August/4/04	
.XXX ± .005 [.13 mm]		MATERIAL		
.XX ± .01 [.25 mm]		FINISH		
.X ± [mm]		MTC KEYING PIN		
ANGLE TOLERANCE .X ±				
WEIGHT				
CAD FILE	C040886.DWG	DO NOT SCALE THIS DRAWING		SHEET 1 OF 1

Mouser Electronics

Authorized Distributor

Click to View Pricing, Inventory, Delivery & Lifecycle Information:

[TE Connectivity:](#)

[D-659-0045](#)