

THIS DRAWING IS UNPUBLISHED. RELEASED FOR PUBLICATION  
 © COPYRIGHT BY TYCO ELECTRONICS CORPORATION. ALL RIGHTS RESERVED.

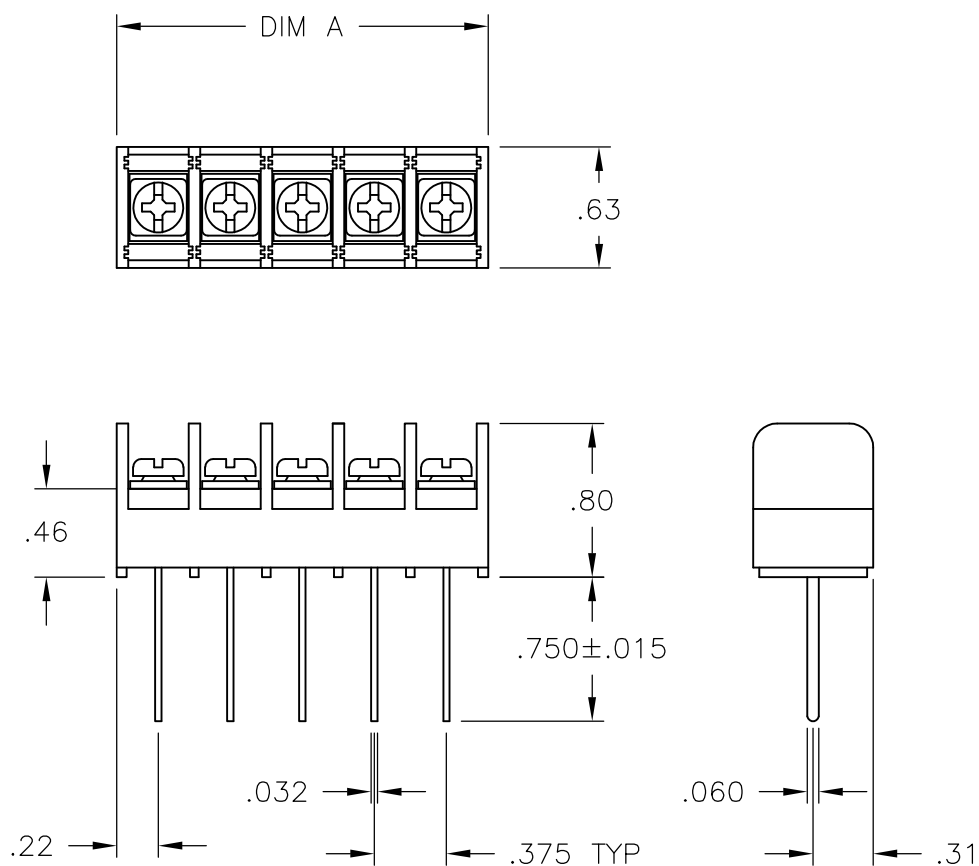
LOC	DIST	REVISIONS					
FT	0	P	LTR	DESCRIPTION	DATE	DWN	APVD
			H	REVISED PER ECO-10-013614	13OCT10	HMR	CR

**MATERIAL:**  
 HOUSING: THERMOPLASTIC, UL94V-0, BLACK.  
 TERMINALS: BRIGHT TIN OVER COPPER ALLOY.  
 SCREWS: #6-32 STEEL, ZINC PLATING W/ CLEAR CHROMATE.

**ELECTRICAL:**  
 RATED CURRENT UL/CSA:  
 CLASS C: 20A, 300V.  
 CLASS D: 5A, 600V.  
 WIRE RANGE: 12-22 AWG

**MECHANICAL:**  
 RECOMMENDED TORQUE: 7 IN-LB.  
 OPERATING TEMP.: 105°C MAX.

⚠ PRELIMINARY PART NUMBER.

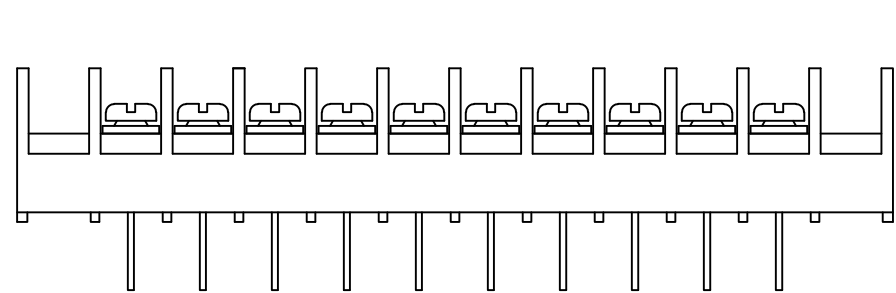


9.436	25	JC6-W108-25	3-1546703-9	
9.061	24	JC6-W108-24	3-1546703-8	
8.686	23	JC6-W108-23	3-1546703-7	
8.311	22	JC6-W108-22	3-1546703-6	
7.936	21	JC6-W108-21	3-1546703-5	
7.561	20	JC6-W108-20	3-796985-0	
7.186	19	JC6-W108-19	3-1546703-4	
6.811	18	JC6-W108-18	3-1546703-3	
6.436	17	JC6-W108-17	3-1546703-2	
6.061	16	JC6-W108-16	3-1546703-1	
5.686	15	JC6-W108-15	3-1546703-0	
5.311	14	JC6-W108-14	2-1546703-9	
4.936	13	JC6-W108-13	2-1546703-8	
SEE FIGURE	4.561	12	JC6-W108-12-198	1776175-1
	4.561	12	JC6-W108-12	2-796985-9
	4.186	11	JC6-W108-11	2-1546703-7
	3.811	10	JC6-W108-10	2-1546703-6
SEE FIGURE	3.436	9	JC6-W108-09	2-1546703-5
	3.811	8	JC6-W108-08-201	1776175-4
	3.061	8	JC6-W108-08	2-1546703-4
SEE FIGURE ⚠	2.686	7	JC6-W108-07	2-1546703-3
SEE FIGURE	2.311	6	JC6-W108-06-234	1776175-6
	2.311	6	JC6-W108-06-200	1776175-3
	2.311	6	JC6-W108-06	2-1546703-2
SEE FIGURE	1.936	5	JC6-W108-05-199	1776175-2
	1.936	5	JC6-W108-05	1-1437666-7
SEE FIGURE ⚠	1.561	4	JC6-W108-04	2-1546703-1
SEE FIGURE	1.186	3	JC6-W108-03-246	1776175-7
	1.186	3	JC6-W108-03-231	1776175-5
	1.186	3	JC6-W108-03	1-1437666-6
	.811	2	JC6-W108-02	2-1546703-0
DIM A	NO OF POS	CATALOG NUMBER	TE PART NO.	

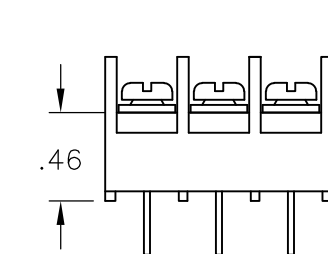
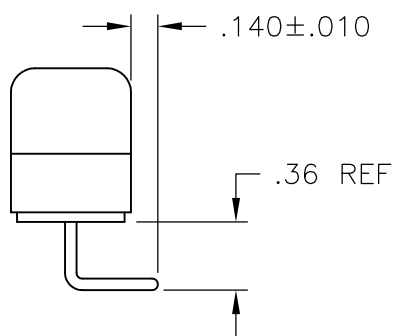
THIS DRAWING IS A CONTROLLED DOCUMENT.		DWN S. SCHLEGEL 5/27/03	Tyco Electronics Corporation Harrisburg, PA 17105	
DIMENSIONS: INCHES		CHK S. YODER 5/27/03	NAME	
TOLERANCES UNLESS OTHERWISE SPECIFIED:		APVD S. YODER 5/27/03	JC6-W108-XX ASSEMBLY	
0 PLC ± - 1 PLC ± - 2 PLC ± .01 3 PLC ± .005 4 PLC ± - ANGLES ± -		PRODUCT SPEC -	SIZE A3	CAGE CODE 00779
MATERIAL -		APPLICATION SPEC -	DRAWING NO C-1-1437666-6	RESTRICTED TO -
FINISH -		WEIGHT -	SCALE NTS	SHEET 1 OF 2
CUSTOMER DRAWING			REV H	

THIS DRAWING IS UNPUBLISHED. RELEASED FOR PUBLICATION  
 © COPYRIGHT BY TYCO ELECTRONICS CORPORATION. ALL RIGHTS RESERVED.

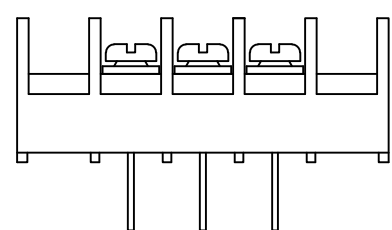
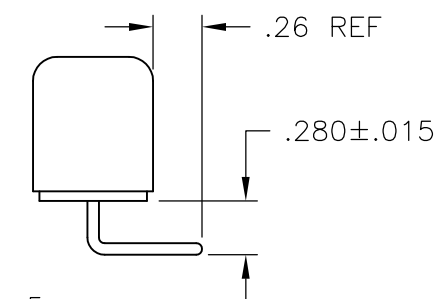
LOC	DIST	REVISIONS					
FT	0	P	LTR	DESCRIPTION	DATE	DWN	APVD
		-		SEE SHEET 1	-	-	-



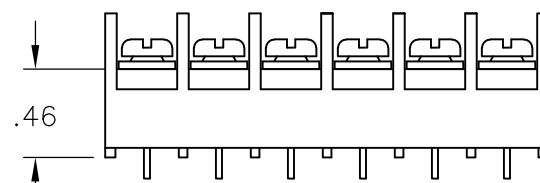
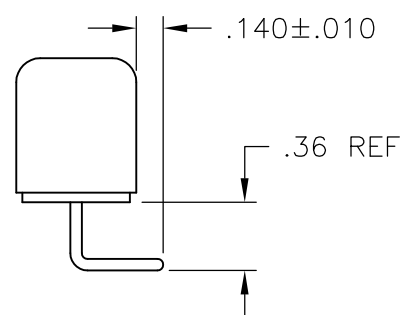
1776175-1



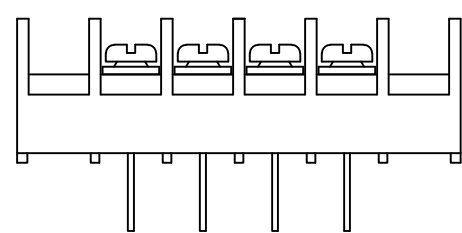
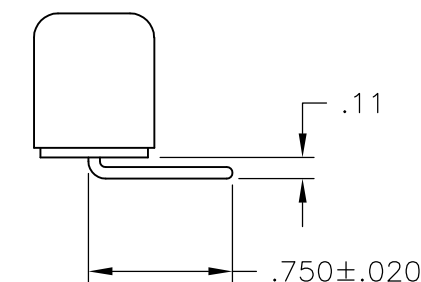
1776175-5



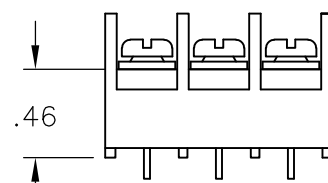
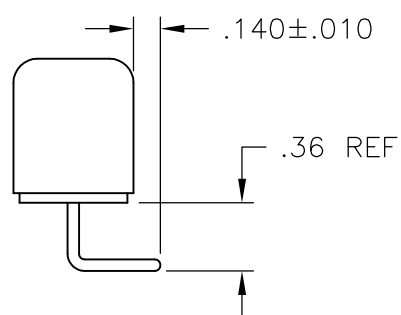
1776175-2



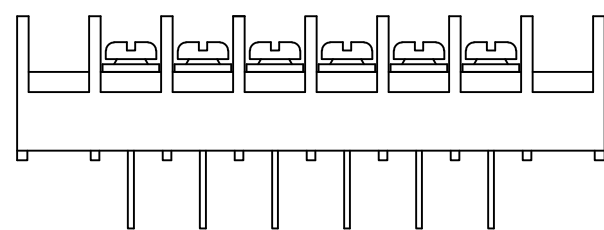
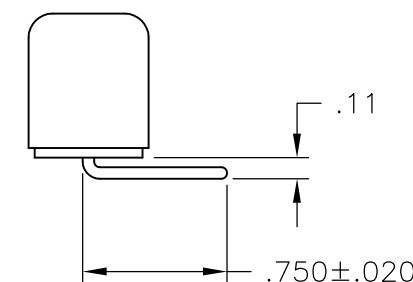
1776175-6



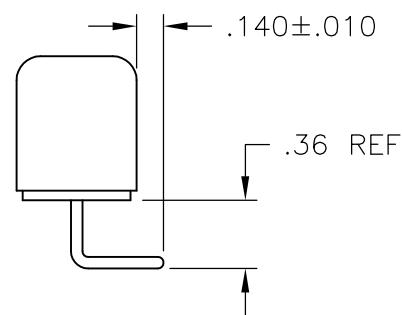
1776175-3



1776175-7

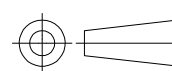


1776175-4



THIS DRAWING IS A CONTROLLED DOCUMENT.

DIMENSIONS:  
INCHES



TOLERANCES UNLESS OTHERWISE SPECIFIED:

0 PLC	± -
1 PLC	± -
2 PLC	± .01
3 PLC	± .005
4 PLC	± -
ANGLES	± -
FINISH	-

MATERIAL

-

DWN	S. SCHLEGEL	5/27/03
CHK	S. YODER	5/27/03
APVD	S. YODER	5/27/03

PRODUCT SPEC	-
APPLICATION SPEC	-
WEIGHT	-

**Tyco Electronics** Tyco Electronics Corporation  
 Harrisburg, PA 17105

NAME  
 JC6-W108-XX ASSEMBLY

SIZE	CAGE CODE	DRAWING NO	RESTRICTED TO
A3	00779	C-1-1437666-6	-

CUSTOMER DRAWING SCALE NTS SHEET 2 OF 2 REV H

# Mouser Electronics

Authorized Distributor

Click to View Pricing, Inventory, Delivery & Lifecycle Information:

[TE Connectivity:](#)

[JC6-W108-03](#)