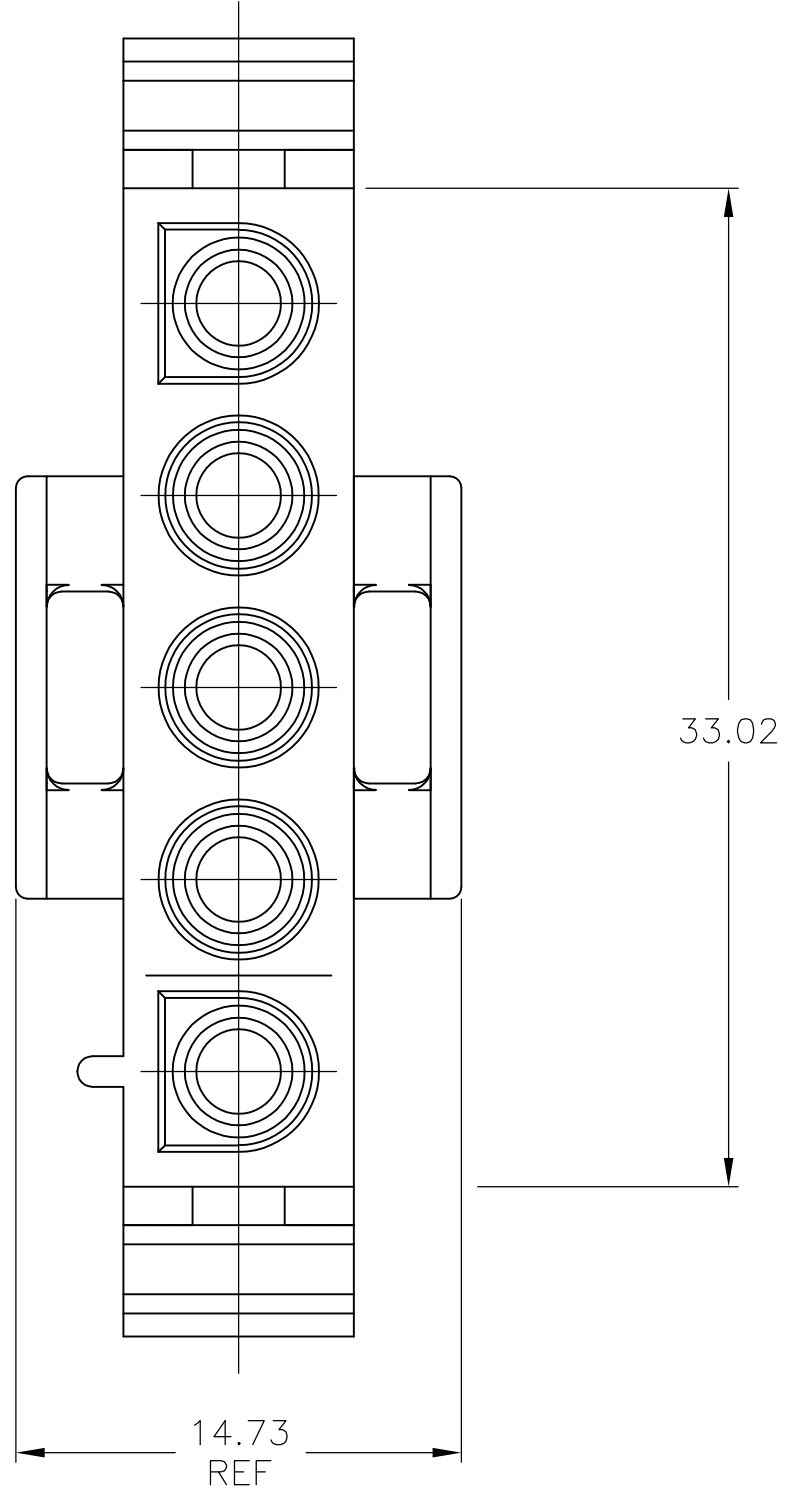
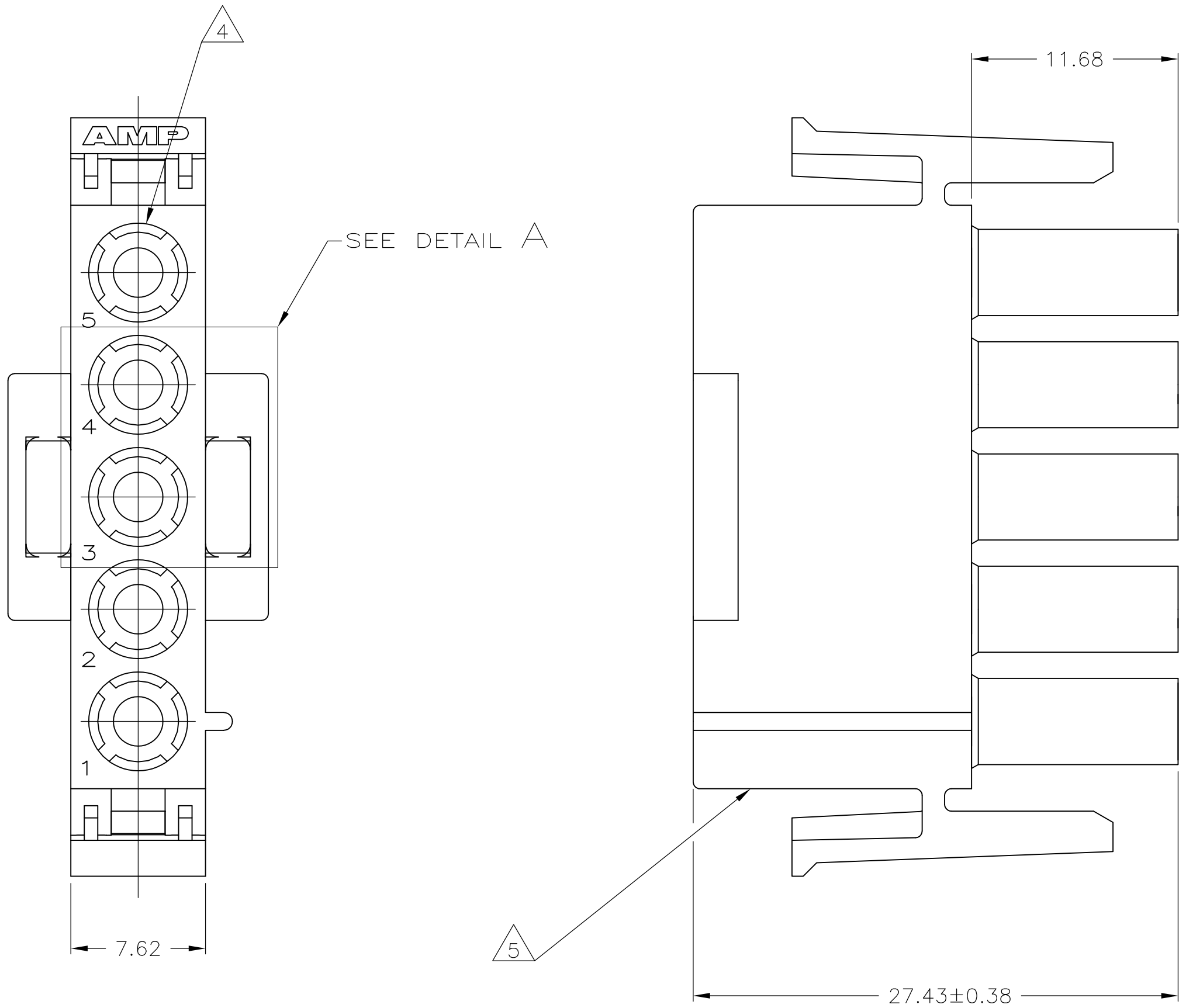


D

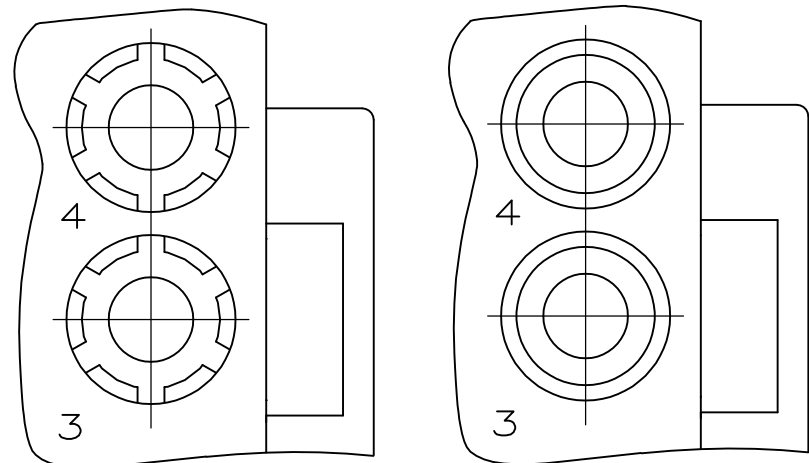
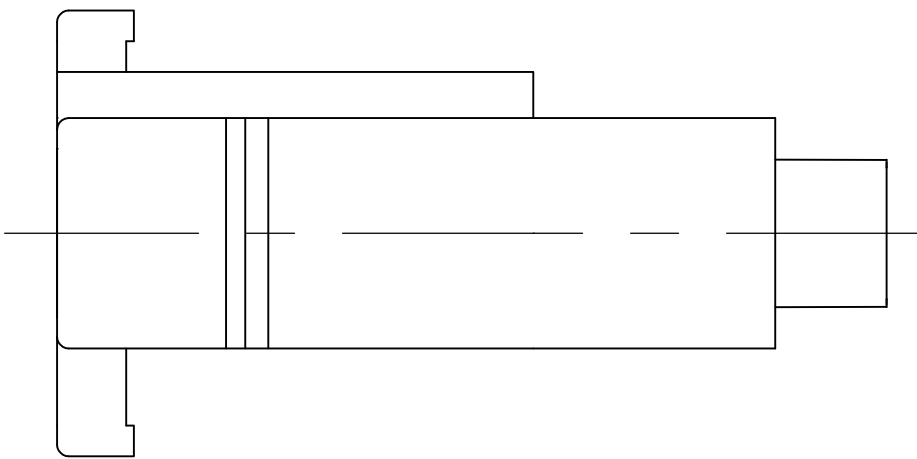
C

B

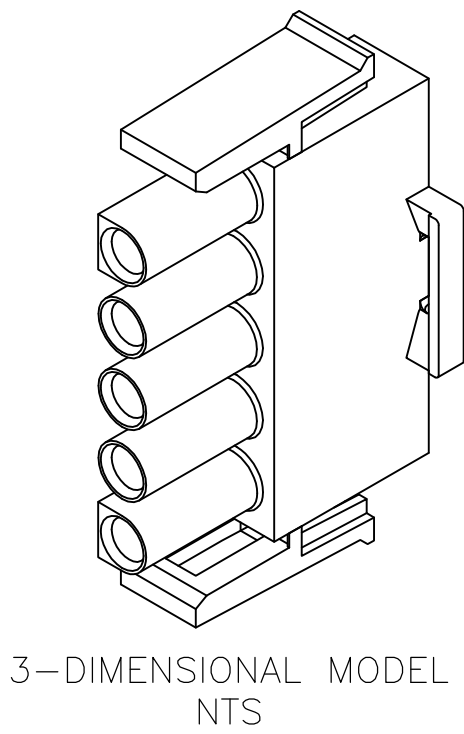
A



- MATES WITH APPROPRIATE UNIVERSAL MATE-N-LOK™ CAP OR HEADER.
- SMALL NICKS ARE PERMITTED ON THE CIRCUIT TOWERS WHICH COULD INCREASE THE INITIAL HOUSING MATING FORCE BY UP TO 4.4 NEWTONS [1.0 LBS]. NO INDIVIDUAL NICKED TOWER SHALL INCREASE THIS FORCE BY OVER 2.2 NEWTONS [.5 LBS].
- DIMENSIONS SHOWN REPRESENT PRODUCT IN DRY, AS MOLDED, CONDITION. ADDITIONAL 2% GROWTH DUE TO SUBSEQUENT MOISTURE ABSORPTION MAY OCCUR AND SHOULD BE ACCOUNTED FOR.
- FOUR RIBS EQUALLY SPACED, NO SPECIFIC ORIENTATION. NO RIBS OR SIX RIBS EQUALLY SPACED, NO SPECIFIC ORIENTATION, OPTIONAL.
- UNDERWRITERS RECOGNIZED COMPONENT LOGO AND CSA CERTIFICATION LOGO TO BE LOCATED ONCE EACH ON SIDE OF HOUSING.





DETAIL A
OPTIONAL CONSTRUCTION



3-DIMENSIONAL MODEL
NTS

PA66 VO GWT 750°C NO FLAME	NATURAL	350809-3
	BLACK	1-350809-9
	GRAY	1-350809-8
	BLUE	1-350809-6
	GREEN	1-350809-5
	YELLOW	1-350809-4
	ORANGE	1-350809-3
	RED	1-350809-2
	BROWN	1-350809-1
SUPERCEDED BY 1-350809-9	BLACK	350809-2
	NATURAL	350809-1
	COLOR	PART NO.

33.02	1.300
27.43	1.080
14.73	.580
11.68	.460
7.62	.300
0.38	.015
0.13	.005
MM	IN
CONVERSION TABLE	

THIS DRAWING IS A CONTROLLED DOCUMENT.			DWN R. VESTAL	24FEB95	 TE Connectivity				
			CHK R. SWING	24FEB95					
DIMENSIONS: mm	TOLERANCES UNLESS OTHERWISE SPECIFIED:	APVD D. SELF			NAME				
		PRODUCT SPEC 108-1031			PLUG, 5 CIRCUIT, UNIVERSAL MATE-N-LOK™				
	MATERIAL SEE TABLE —	0 PLC ± —	APPLICATION SPEC 114-18011			SIZE A1	CAGE CODE —	DRAWING NO 350809	RESTRICTED TO —
		1 PLC ± 0.13	WEIGHT —			CUSTOMER DRAWING			
		2 PLC ± —							
		3 PLC ± —							
4 PLC ± —	ANGLES FINISH — ± 0°30'	SCALE 4:1 SHEET 1 OF 1 REV Y5							

Mouser Electronics

Authorized Distributor

Click to View Pricing, Inventory, Delivery & Lifecycle Information:

[TE Connectivity:](#)

[1-350809-9](#)