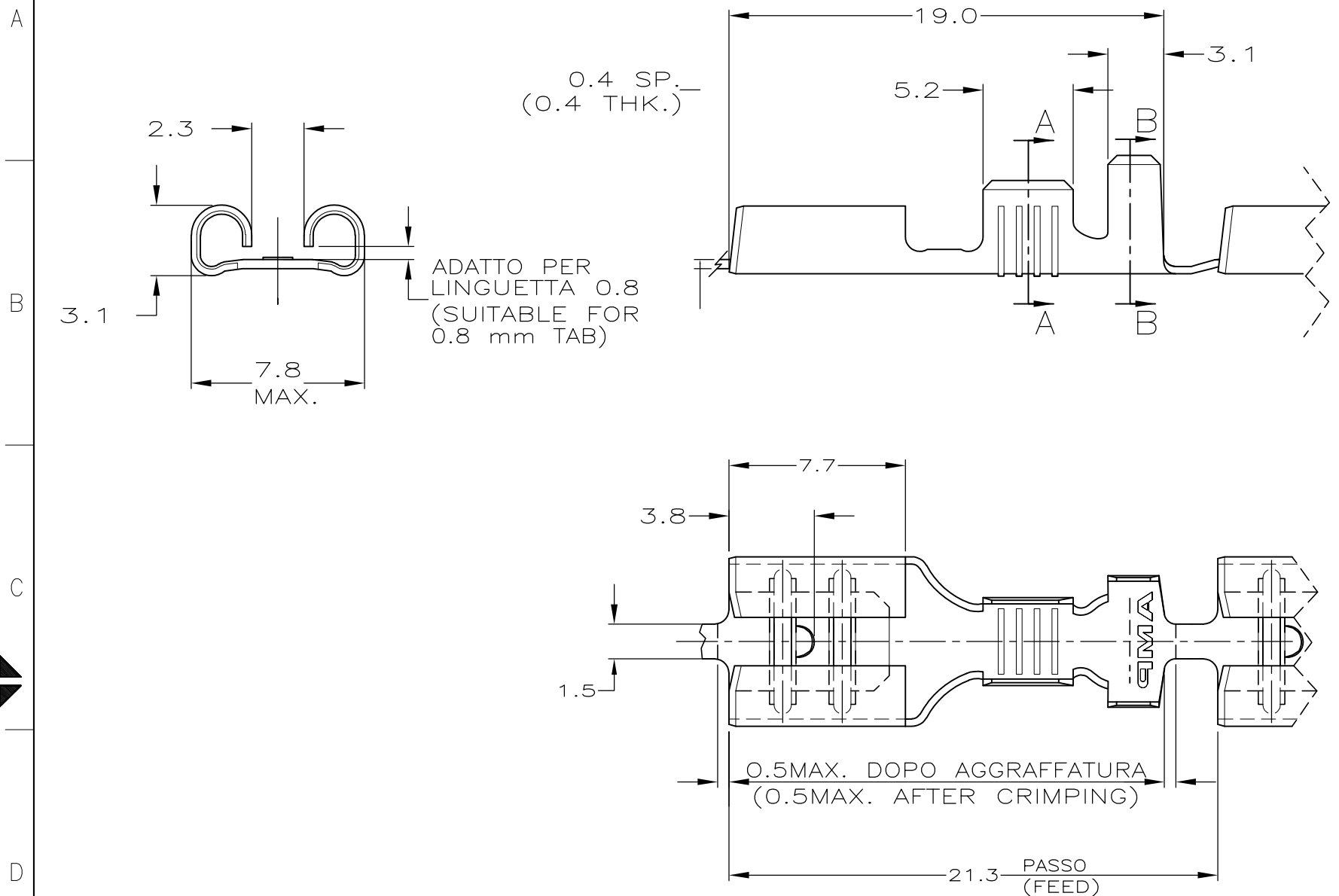


SCALA NON IMPEGNATIVA
(DO NOT SCALE)
DIMENSIONI IN mm
(DIMENSIONS IN mm)

METRIC

PROIEZIONE EUROPEA
(EUROPEAN PROJECTION)

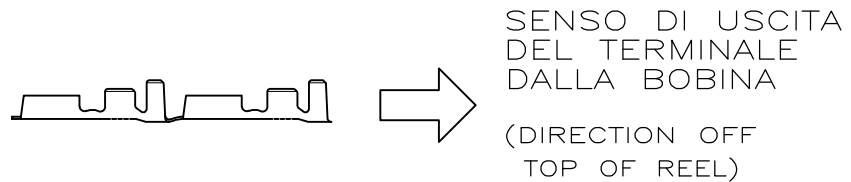


SEZIONE A-A
(SECTION A-A)

SEZIONE B-B
(SECTION B-B)

- 1 BOBINATO CON CARTA INTERPOSTA
(REELED WITH INTERLEAVE PAPER STRIP).
- 2) SPECIFICA DI PRODOTTO 108-20019.
(PRODUCT SPEC. 108-20019)
SPECIFICA DI AGGRAFFATURA 114-20023.
(APPLICATION SPEC. 114-20023).
- 3 P/N CON ALTA FORZA DI ESTRAZIONE
(SUITABLE FOR HIGHER
EXTRUCTION FORCE APPLICATION).
- 4 OBSOLETE PARTS: OBSOLETE CIS STREAMLINING
PER D.RENAUD/D.SINISI

STATO DI FORNITURA - SCALA 1:1
(SUPPLYING CONDITION - SCALE 1:1-)



| | | | | | | |
|--|--------------------------------|--------------------------|---|--|---|------------------------|
| | 4 | 1 | STAGNATO (TIN PLTD) | OTTONE (BRASS) | 1-280001-3 | AH |
| | 3 | | STAGNATO (TIN PLTD) | OTTONE (BRASS) | 1-280001-2 | AH |
| | 3 | | NUDO (UNPLATED) | OTTONE (BRASS) | 1-280001-1 | AH |
| | | | NUDO (UNPLATED) | OTTONE (BRASS) | 1-280001-0 | AG |
| | | | STAGNATO (TIN PLTD) | OTTONE (BRASS) | 0-280001-9 | AG |
| PEZZO SCIOLTO P/N (LOOSE PIECE P/N) | NOTE | | FINITURA / COLORE (FINISH / COLOUR) | MATERIALE (MATERIAL) | NUMERO (PART NO) | REV. |
| | | | CUSTOMER DWG. FOR REFERENCE ONLY | | DISEGNO PER CLIENTE SOLO PER RIFERIMENTO | |
| | | | THIS DRAWING IS UNPUBLISHED | | RELEASE FOR PUBLICATION | 19 |
| | | | © COPYRIGHT 19 BY , | | ALL INTERNATIONAL RIGHT RESERVED. | |
| | | | TOLLERANZE: SE NON DIVERSAMENTE SPECIFICATO (TOLERANCES: UNLESS OTHERWISE SPECIFIED) | DIAM. ISOLANTE (INS. DIA. RANGE) | RANGO FILO (WIRE RANGE) | SCALA (SCALE) |
| | | | ± 0.3 | 3-4.3 mm | 1.0-2.5 mm ² | 4:1 |
| | | | ANGOLI (ANGLES) | TE Connectivity | | |
| | | | DIS. 4 JUL 96 (DR.) A. FROLA | DESCRIZIONE (DESCRIPTION) FASTON® Connector | | |
| | | | CONT. 4 JUL 96 (CHK) C. TARTARI | .250" sr. REC. CONTACT | | |
| AH5 | REVISED PER ECO-11-005140 | RK | 05APR 11 | LOC. SIZE | NUMERO (DWG NO) | REV. FOGLIO (SHEET) |
| REV. | REVISIONI (REVISION RECORD) | DIS. DATA (DR) (DATE) | APP. - (APP.) | 1 | A3 C-280001 | AH5 1 (OF) 1 |

Mouser Electronics

Authorized Distributor

Click to View Pricing, Inventory, Delivery & Lifecycle Information:

[TE Connectivity:](#)

[280001-9 \(Cut Strip\)](#) [280001-9 \(Mouser Reel\)](#)