

PRODUCT NUMBER
71607-XXXXLF

ROHS COMPATIBLE, SEE NOTE 6

OPTIONAL LETTER

A: PRODUCT PACKED IN TAPE & REEL, SEE TAB56.

NUMBER OF POSITIONS: 02 TO 40.

PLATING CODE

3= 0.76µm GOLD ON CONTACT AREA.

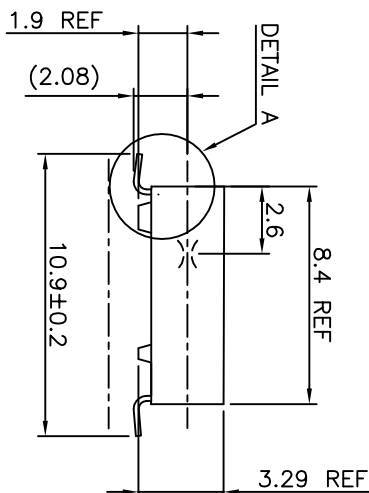
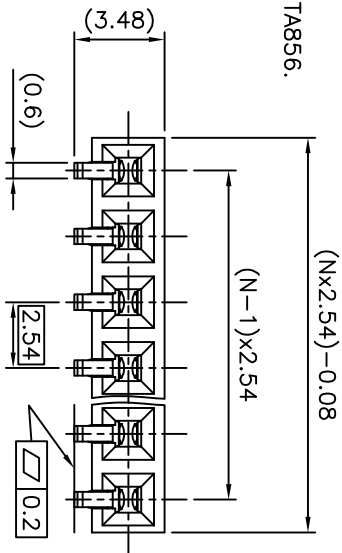
2µm MIN MATTE TIN ON TAIL.

4= 2µm MIN MATTE TIN FULL PLATED

8= 0.35µm GOLD ON CONTACT AREA.

2µm MIN MATTE TIN ON TAIL.

1.27µm Ni MIN UNDERPLATING



NOTES:

1 - HOUSING MAT'L: THERMOPLASTIC GLASS FILLED
FLAME RETARDANT PER UL 94 V-0 COLOR: GREY.

2 - TERMINAL MATERIAL: PHOSPHOR BRONZE.

3 - 2 UP TO 4 POSITIONS PRODUCT PACKED .
IN PLASTIC BOX

5 UP TO 40 POSITIONS PRODUCT PACKED IN TUBE.

4 - TO DETERMINE DIMENSIONS:

N = NUMBER OF POSITIONS

EXAMPLE: 8 POS: (N+2.54)-0.08=20.24 mm

5 - RECOMMENDED IR PROFIL PER TA 842.

6 - ROHS COMPATIBLE PRODUCT SPECIFICATIONS

a - PLATING:

- "LF" MEANS THE PRODUCT IS LEAD-FREE,
2µm MINIMUM MATTE TIN OVER 1.27µm
MINIMUM NICKEL UNDERPLATE.

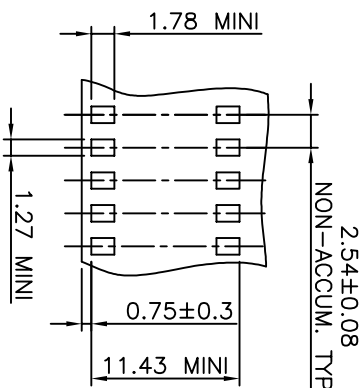
b - MANUFACTURING PROCESS COMPATIBILITY

- THE HOUSING WILL WITHSTAND EXPOSURE TO
260°C PEAK TEMPERATURE FOR 30 SECONDS
MAX IN A CONVECTION, INFRA-RED OR VAPOR
PHASE OR REFLOW OVEN.

c - LABELING:

- MEETS PACKAGING SPECS AS PER GS-14-920

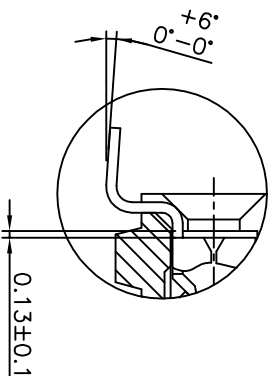
d - LEGAL STATEMENT: SEE GS-47-0004



SCALE 2.5:1

PRINTED CIRCUIT BOARD

RECOMMENDED HOLE PATTERN



DETAIL A
SCALE 20:1

mat'l. code		surface		tolerance		projection		product family	
SEE NOTE 1		ISO 1302		ISO 406		ISO 1101		DUBOX	
lfr	ecm no	dr	date	ISO 1302	ISO 406	ISO 1101	mm	title	
T	F04-0347	DLE	04.11.08	ISO 1302	ISO 406	ISO 1101	mm	BtB RECEIPT.	
U	F06-0204	DLE	06.06.10	ISO 1302	ISO 406	ISO 1101	mm	HORIZ SR SMT	
V	B-19123	LMU	14.10.20	ISO 1302	ISO 406	ISO 1101	mm	dwg no	
		dr	P NIZZI					sheet 1 of 1	
		engr	P NIZZI					size	
		chr	JF NOTTEAU					A3	
		appd	PNZ					type	
								CUSTOMER	
								Drawing	
sheet		revision							
index		sheet							

Mouser Electronics

Authorized Distributor

Click to View Pricing, Inventory, Delivery & Lifecycle Information:

[Amphenol:](#)

[71607-306](#) [71607-302ALF](#)