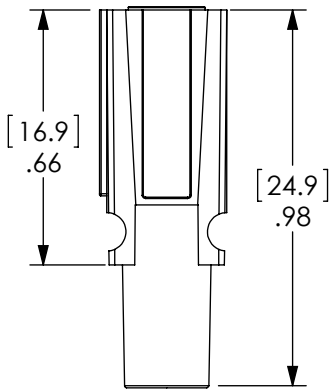


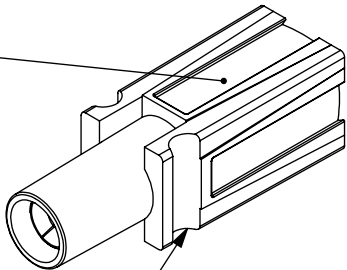
THE INFORMATION CONTAINED IN THIS DRAWING IS THE SOLE PROPERTY OF ANDERSON POWER PRODUCTS. ANY REPRODUCTION IN PART OR WHOLE WITHOUT THE WRITTEN PERMISSION OF ANDERSON POWER PRODUCTS IS PROHIBITED.

Copyright 2009

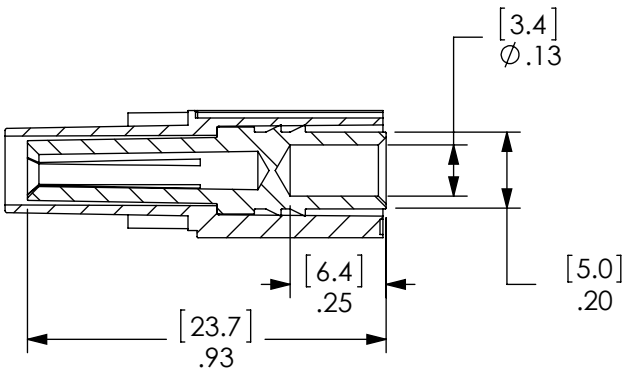
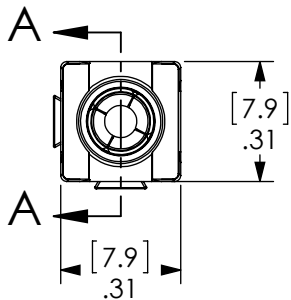
ANDERSON POWER PRODUCTS RESERVES THE RIGHT TO ALTER PRODUCT TYPES, THEIR TECHNICAL DATA, DIMENSION, STYLE AND ACCESSORIES WITHOUT PRIOR NOTIFICATION.



DOVETAILS ALLOW STACKING IN VERTICAL, HORIZONTAL, OR IN BLOCK CONFIGURATIONS.



WHEN MATED SIDE TO SIDE, HALF-ROUNDS ALIGN TO FORM A SLOT FOR ROLL PIN INSERTION, WHICH PROTECTS AGAINST ACCIDENTAL DISLODGING OF MATED HOUSINGS.




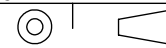
SECTION A-A

ORDERING INFORMATION FOR CONTACT/HOUSING SETS

CAT. NO.	PLATING
PP30MF-S10T	TIN
PP30MF-S10S	SILVER

- NOTES:
- CONTACT MUST BE CRIMPED ONTO WIRE BEFORE CONTACT IS INSERTED INTO THE HOUSING
  - MATERIALS - HOUSING: POLYCARBONATE  
CONTACT: COPPER ALLOY

4	ECRN-15089 UPDATED	TWE	3/16/12
3	ECRN-13484 ADD CAT. NO. TABLE	CMS	05/15/02
2	ECRN-13433	CMS	10/23/01
1	ECRN-13287 ADD CRIMP NOTE	CMS	01/13/00
REV.	DESCRIPTION	APPRV	DATE
REVISIONS			

DIMENSIONS ARE IN:		INCH [MM]		APPROVALS		 ANDERSON POWER PRODUCTS	
UNLESS OTHERWISE STATED				DRAWN		TITLE  POWERPOLE 30 GROUND SOCKET MAKE-FIRST-BREAK LAST	
TOLERANCES:				CMS 1/25/1999			
DECIMALS (INCH)		DECIMALS (MM)		CHECKED 1/26/1999			
.XX ± .02		.X ± .5		DJD			
SURFACE FINISH:				MFG APPRV		SIZE A	
MACHINED		128µin [3.2µ]		CHB 10/21/2001			
MOLDED		64µin [1.6µ]		QC APPRV			
				RPO 10/10/2001			
MATERIAL:				ENG APPRV		DWG NO.	
SEE NOTE 2				UFN 10/22/2001		113920S2	
FINISH:						REV.	
SEE TABLE						4	
				-CAD GENERATED DRAWING- DO NOT MANUALLY UPDATE DO NOT SCALE		SCALE	
						NONE	
						CADFILE	
						01127	
						SHEET	
						1 OF 1	

# Mouser Electronics

Authorized Distributor

Click to View Pricing, Inventory, Delivery & Lifecycle Information:

[Anderson Power Products:](#)

[PP30MF-S10T](#)