

IC series

Pushbutton switches for harsh environments •
short case • bushing Ø 12 mm • momentary



DISTINCTIVE FEATURES

Momentary with short case, reduced behind-panel depth

Tactile feedback

Flat round actuator for optional marking

Glossy actuator option (round curved only)

Sealed to IP67



ENVIRONMENTAL SPECIFICATIONS

- Front panel sealing : IP67 according to IEC 60529
- Shock resistance : 100 g according to IEC 512-4, test 6c
- Vibration resistance : 10-500Hz - 10 g according to IEC 512-4, test 6d
- Salt spray : IEC 512-6, test 11f
- Robustness : IK06 according to EN 50102 (1 joule)
- Operating temperature : -40 °C to +85 °C (-40 °F to +185 °F)



ELECTRICAL SPECIFICATIONS

- Max. current/voltage rating with resistive load :
5 A 28 VDC, 70,000 cycles
0.2 A 48 VDC, 500,000 cycles
0.5 A 48 VAC, 500,000 cycles
- Initial contact resistance : 50 mΩ max.
- Insulation resistance : 1 GΩ min. at 500 VDC
- Dielectric strength : 1,500 Vrms 50 HZ between terminals



GENERAL SPECIFICATIONS

- Panel thickness : 1.5 mm (.059) min. - 4 mm (.157 max.)
- Total travel : 1.7 mm (.067) ± 0.3 mm
- Typical operating force : 4 N ± 2 N
- Low level or mechanical life : 1,000,000 cycles
- Torque : 1,5 Nm max. applied to nut
- Soldering : 320 °C (608 °F) max. for 3 sec.

The company reserves the right to change specifications without notice.



IC series

Pushbutton switches for harsh environments • short case • bushing Ø 12 mm • momentary

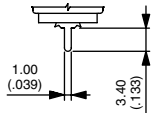


MATERIALS

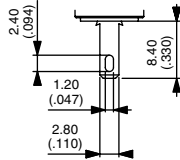
- Case : thermoplastic UL94-V0
- Actuator : polyamide 6/6
- Bushing/bezel : zinc die-cast (zamac), black painted
- Contacts : silver, gold plated
- Multi-wire leads AWG20, section 0.6 mm²
- Terminal seal : epoxy



TERMINALS



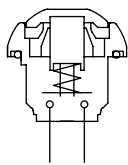
Straight P



Quick-connect Z1



ELECTRICAL FUNCTIONS

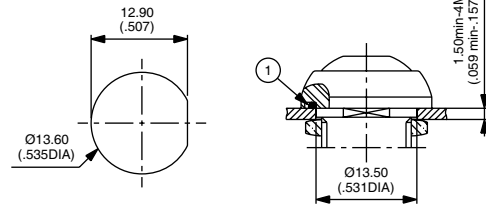


Function 3 (NO)



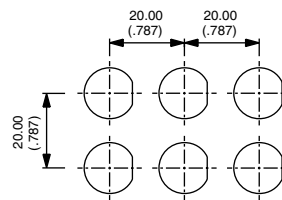
MOUNTING

PANEL CUT-OUT

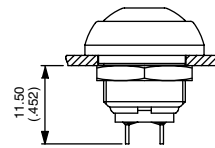


① - O-ring

MATRIX MOUNTING



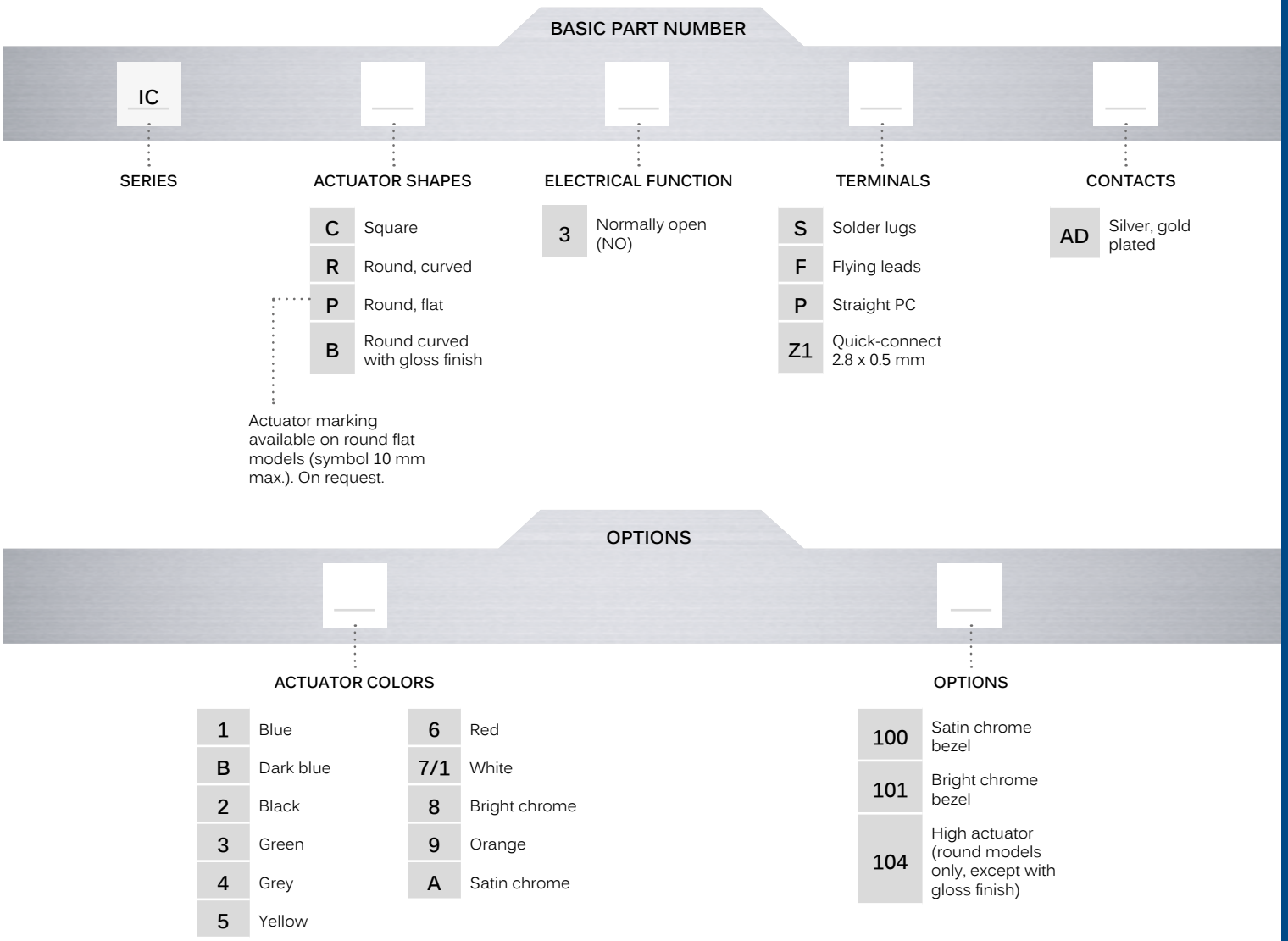
BACK OF PANEL SPACE REQUIREMENT



Pushbutton switches for harsh environments • short case • bushing Ø 12 mm • momentary



BUILD YOUR PART NUMBER



ABOUT THIS SERIES

On the following pages, you will find successively basic part numbers of switches and options in the same order as in above chart.

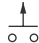
- Notice** : please note that not all combinations of above numbers are available. Refer to the following pages for further information.
- A sealing boot** is available to protect the switches against frost and sand (P/N U5125). See "Sealing Boots" section of website.
- Mounting accessories** : Standard hardware supplied : 1 hex nut 14 mm (.551) across flats and 1 O-Ring. Hex nut part number U166.

IC series

Pushbutton switches for harsh environments • short case • bushing Ø 12 mm • momentary

SQUARE - SOLDER LUG TERMINALS

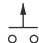


ICC3SAD  Normally Open

Also available with straight PC terminals : ICC3PAD
and quick-connect terminals : ICC3Z1AD


SQUARE - FLYING LEAD TERMINALS



ICC3FAD  Normally Open

ROUND - SOLDER LUG TERMINALS



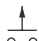
Curved actuator
ICR3SAD  Normally Open

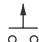
Flat actuator
ICP3SAD  Normally Open

Also available with straight PC terminals : IC•3PAD
and quick-connect terminals : IC•3Z1AD

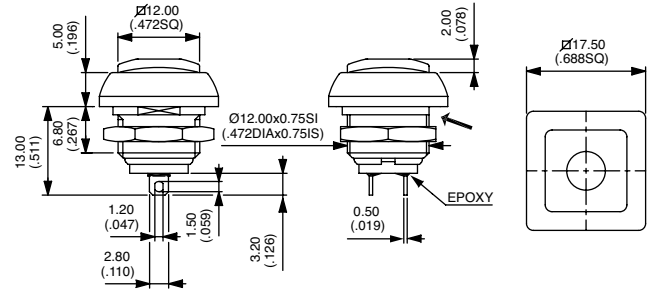
ROUND - FLYING LEAD TERMINALS



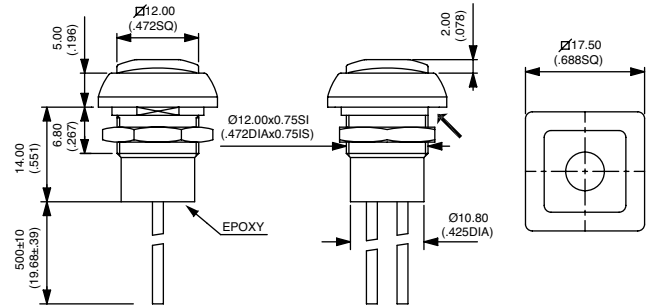
Curved actuator
ICR3FAD  Normally Open

Flat actuator
ICP3FAD  Normally Open

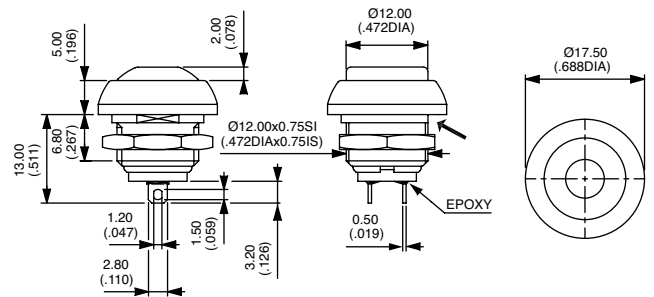
→ FLAT



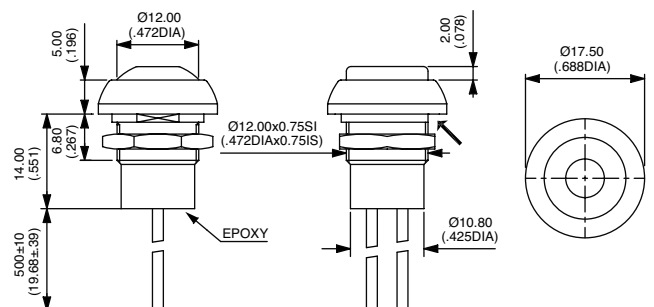
→ FLAT



→ FLAT



→ FLAT



IC series

Pushbutton switches for harsh environments • short case • bushing \varnothing 12 mm • momentary

ACTUATOR COLORS

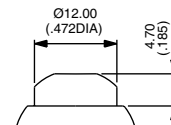


- 1 Blue
- B Dark blue
- 2 Black
- 3 Green
- 4 Grey
- 5 Yellow
- 6 Red
- 7/1 White
- 8 Bright chrome
- 9 Orange
- A Satin chrome

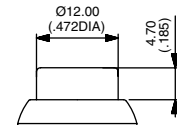
OPTIONS



- 100 Satin chrome bezel
- 101 Bright chrome bezel
- 104 High actuator (round models only, except with gloss finish)



104 IPR



104 IPP

Mouser Electronics

Authorized Distributor

Click to View Pricing, Inventory, Delivery & Lifecycle Information:

[Apem:](#)

[ICC3PAD2101](#) [ICR3FAD2](#) [ICP3FAD2](#) [ICP3FAD2104](#) [ICP3SAD2](#) [ICP3SAD2104](#) [ICP3Z1AD2](#) [ICP3Z1AD2101](#)
[ICC3FAD2100](#) [ICC3FAD2101](#) [ICC3PAD2](#) [ICC3PAD2100](#) [ICC3SAD2](#) [ICC3SAD2100](#) [ICR3FAD2101](#) [ICR3FAD2104](#)
[ICR3PAD2](#) [ICP3PAD2100](#) [ICP3PAD2104](#) [ICP3SAD2100](#) [ICP3SAD2101](#) [ICP3Z1AD2100](#) [ICR3FAD2100](#)
[ICC3SAD2101](#) [ICC3Z1AD2](#) [ICC3Z1AD2100](#) [ICC3Z1AD2101](#) [ICP3FAD2101](#) [ICP3PAD2](#) [ICC3FAD2](#) [ICR3SAD5](#)
[ICP3SAD3](#) [ICP3FAD6104](#)