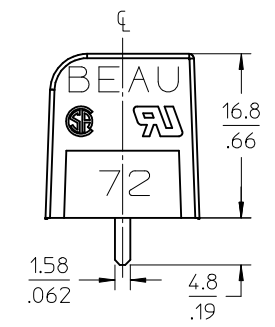
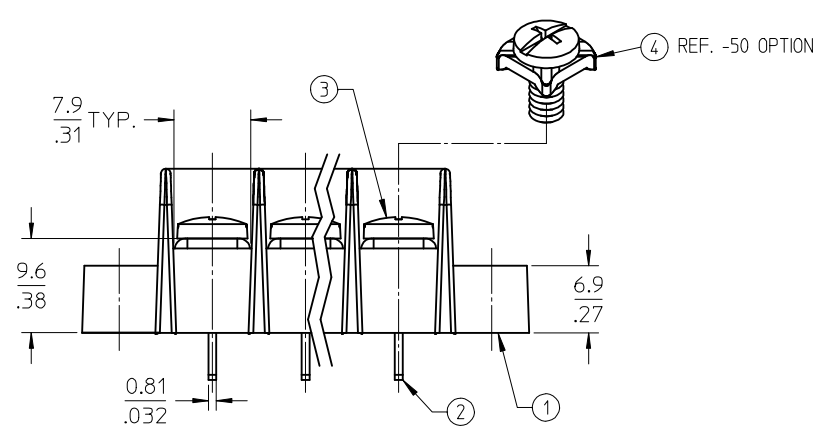
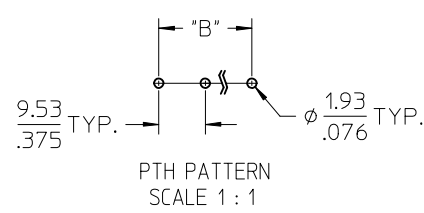
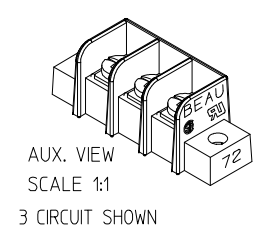
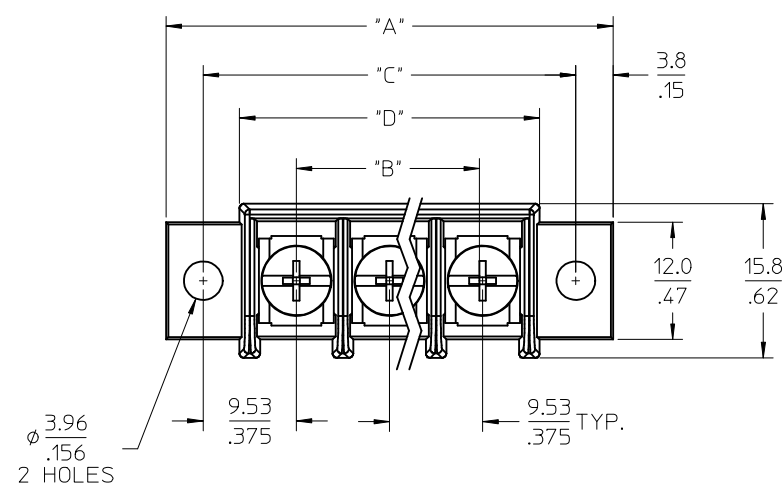


	10		9		8		7		6	5	4	3	2	38724
QTY. OF CIRC. "XX"	DIM. "A"		DIM. "B"		DIM. "C"		DIM. "D"		ASSEMBLY MATERIAL # (STANDARD)	ASSEMBLY MATERIAL # (-50 OPT.) (B)				
	mm	inch	mm	inch	mm	inch	mm	inch						
02	36.2	1.43	9.53	.375	28.58	1.125	21.1	.83	387244002	387244802				
03	45.7	1.80	19.05	.750	38.10	1.500	30.7	1.21	387244003	387244803				
04	55.2	2.18	28.58	1.125	47.63	1.875	40.2	1.58	387244004	387244804				
05	64.8	2.55	38.10	1.500	57.15	2.250	49.7	1.96	387244005	387244805				
06	74.3	2.93	47.63	1.875	66.68	2.625	59.2	2.33	387244006	387244806				
07	83.8	3.30	57.15	2.250	76.20	3.000	68.8	2.71	387244007	387244807				
08	93.3	3.68	66.68	2.625	85.73	3.375	78.3	3.08	387244008	387244808				
09	102.9	4.05	76.20	3.000	95.25	3.750	87.8	3.46	387244009	387244809				
10	112.4	4.43	85.73	3.375	104.78	4.125	97.3	3.83	387244010	387244810				
11	121.9	4.80	95.25	3.750	114.30	4.500	106.9	4.21	387244011	387244811				
12	131.4	5.18	104.78	4.125	123.83	4.875	116.4	4.58	387244012	387244812				
13	141.0	5.55	114.30	4.500	133.35	5.250	125.9	4.96	387244013	387244813				
14	150.5	5.93	123.83	4.875	142.88	5.625	135.4	5.33	387244014	387244814				
15	160.0	6.30	133.35	5.250	152.40	6.000	145.0	5.71	387244015	387244815				
16	169.5	6.68	142.88	5.625	161.93	6.375	154.5	6.08	387244016	387244816				



- NOTES:
- 1. MATERIAL: SEE TABLE
  - 2. FINISHES: SEE TABLE
  - 3. PRODUCT SPECIFICATION: NOT REQUIRED
  - 4. "XX" REFERS TO THE QUANTITY OF CIRCUITS
  - 5. ROHS COMPLIANT

ITEM	QTY.	DESCRIPTION	MATERIAL	FINISH
4	XX	SCREW W/WASHER, #6-32X.250, PANHD, PH-SL	STEEL	ZN. CLEAR CHROMATE
3	XX	SCREW, #6-32X.250, BHD, PHIL-SLOT	STEEL	ZN. CLEAR CHROMATE
2	XX	TERMINAL, PC	BRASS	TIN PLATE
1	1	INSULATOR, SR, CS, MOLDED MTG.	POLYESTER (PBT)	BLACK

ADD -50 PART NUMS.  
EC NO: WNA2009-0426  
2009/02/06  
DRWN: JENC INAS  
2009/02/10  
CHKD: CYORK  
2009/02/10  
APPR: JMACNEIL

DESCRIPTION

REV

QUALITY SYMBOLS  
=0  
=0

GENERAL TOLERANCES (UNLESS SPECIFIED)  
mm INCH  
4 PLACES ± --- ± ---  
3 PLACES ± --- ± .005  
2 PLACES ± 0.13 ± .01  
1 PLACE ± 0.3 ± ---  
ANGULAR ± 2 °  
DRAFT WHERE APPLICABLE  
MUST REMAIN  
WITHIN DIMENSIONS

DIMENSION STYLE  
MM/IN  
DRAWN BY DATE  
C. YORK 2005/06/07  
CHECKED BY DATE  
G. ROBERTSON 2005/06/13  
APPROVED BY DATE  
G. ROBERTSON 2005/06/13  
MATERIAL NO.  
SEE CHART  
SIZE B  
THIS DRAWING CONTAINS INFORMATION THAT IS PROPRIETARY TO MOLEX INCORPORATED AND SHOULD NOT BE USED WITHOUT WRITTEN PERMISSION

SCALE  
2:1  
DESIGN UNITS  
INCH  
THIRD ANGLE PROJECTION  
9.53MM [.375"] SR BTS, PC ASSY, CLOSED SIDE (72R5XX)  
MOLEX MOLEX INCORPORATED  
DOCUMENT NO.  
SD-38724-001  
SHEET NO.  
1 OF 1

tb\_frame\_B\_P\_ME\_T Rev. E 2006/04/15 9 8 7 6 5 4 3 2 1

# Mouser Electronics

Authorized Distributor

Click to View Pricing, Inventory, Delivery & Lifecycle Information:

Molex:

38724-4808