
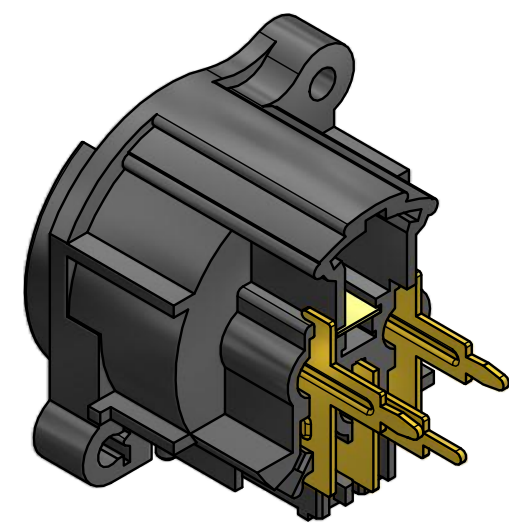
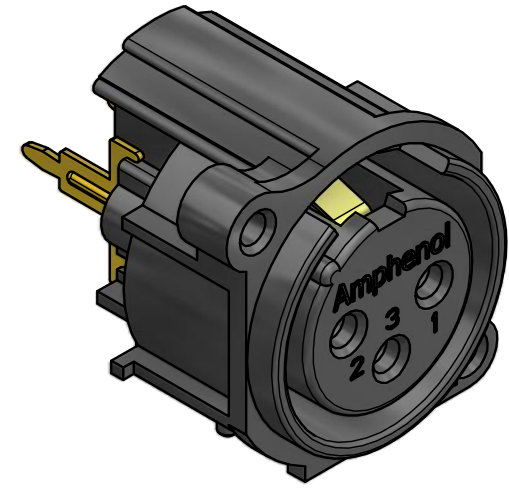
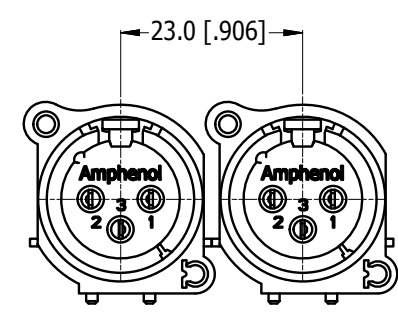


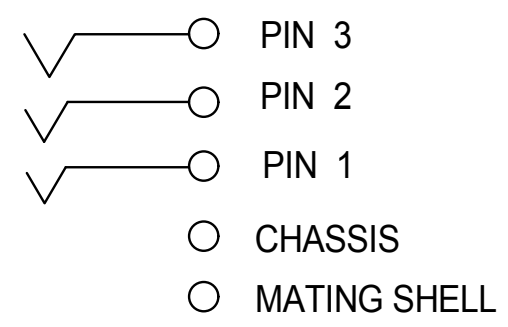
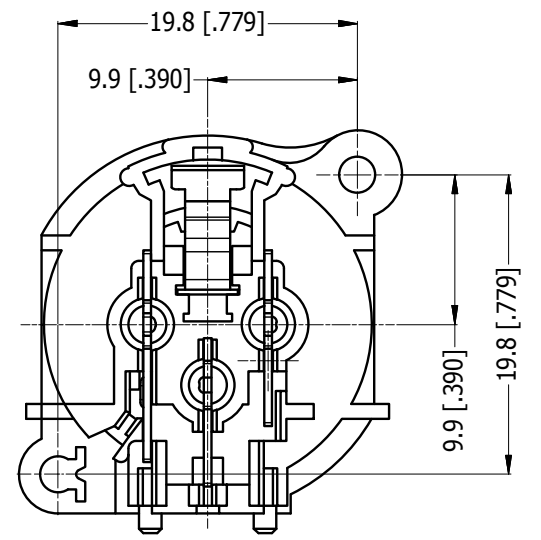
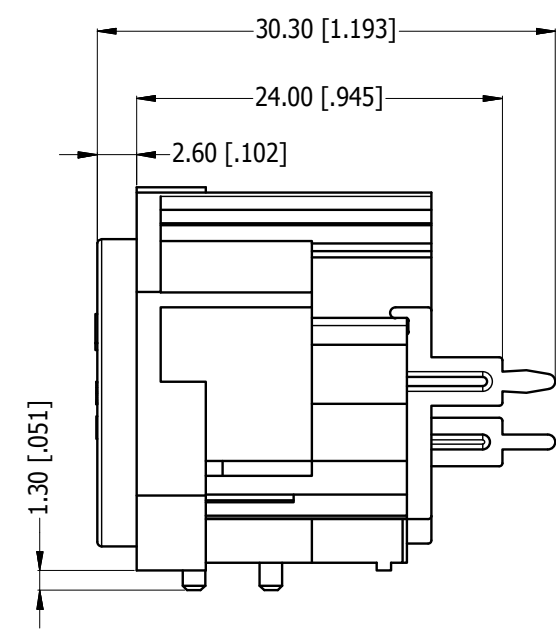
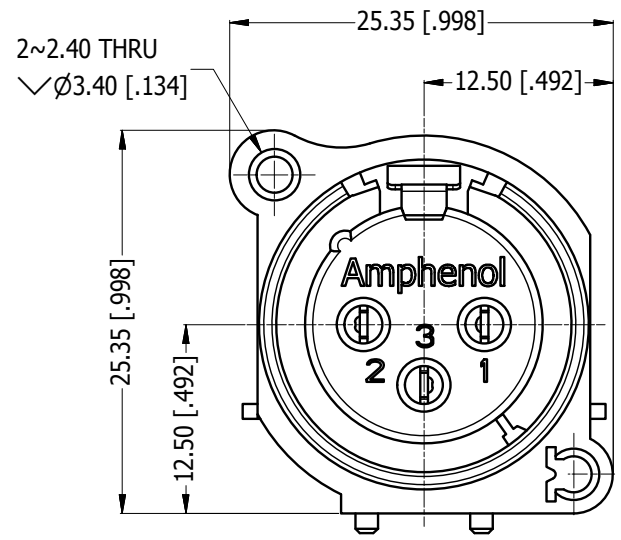
LEGEND  = KEY PRODUCT CHARACTERISTICS



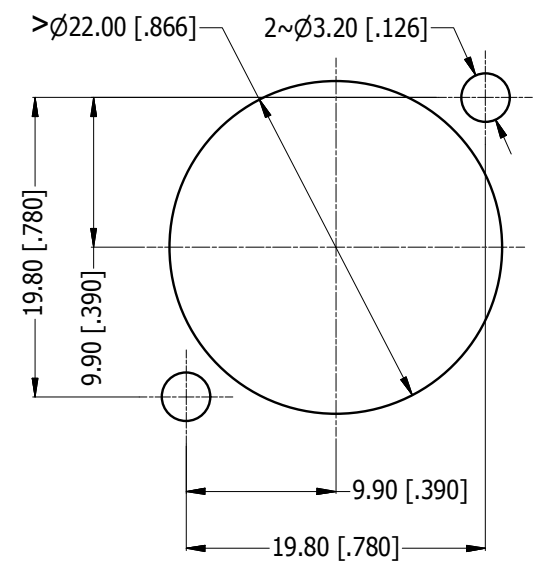
ISO VIEW



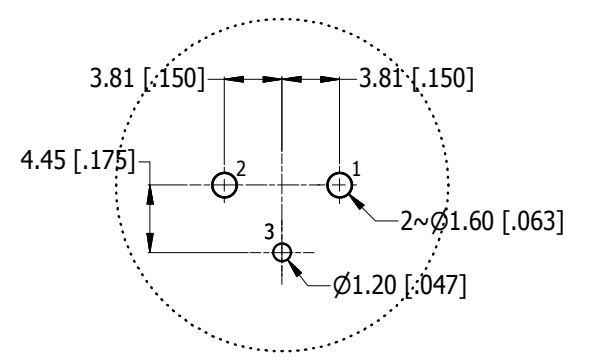
MIN MOUNTING PITCH
SCALE 1:1



SCHEMATIC CHART



PANEL CUT OUT
REAR VIEW



PCB-LAYOUT
COMPONENT SIDE
TOLERANCE: ± 0.05mm [.002"]

REVISION HISTORY				
REV	DESCRIPTION	DATE	BY	CHG/No
0	FIRST ISSUE	08/10/2014	MH	---

UNLESS OTHERWISE SPECIFIED TOLERANCE TO BE		THIS DOCUMENT IS THE PROPERTY OF AMPHENOL AUSTRALIA PTY. LTD. NO PART THEREOF MAY BE REPRODUCED AND USED WITHOUT THE PRIOR WRITTEN CONSENT OF THE OWNER				Amphenol Australia Pty.Ltd, 22 Industry Blvd, Carrum Downs, VIC 3201	
LINEAR	ANGULAR	MATERIAL: REFER TO COMPONENT		DRN: MH	DATE: 08/10/2014	TITLE: AC3FAVL-AU-PRE VERTICAL FEMALE CUSTOMER DRAWING	
X ± 0.5	X' ± 1	FINISH: REFER TO COMPONENT		CKD: M.H	DATE: 08/10/2014	PART No: AC3FAVL-AU-PRE	
X.X ± 0.2	X.X' ± 30'	DO NOT SCALE		APP'D: P.M	DATE: 08/10/2014	DRAWING NO. 55011053-000-2	
X.XX ± 0.1	X.XX' ± 15'	DIMENSIONS IN MILLIMETRES		SCALE: 2:1	SIZE: A3	SHEET 2/2	
BREAK ALL SHARP EDGES AND REMOVE ALL BURRS		THIRD ANGLE PROJECTION		CAD FILE 55011053000220			

Mouser Electronics

Authorized Distributor

Click to View Pricing, Inventory, Delivery & Lifecycle Information:

[Amphenol:](#)

[AC3FAVL-AU-B](#) [AC3FAVL-AU-PRE](#)