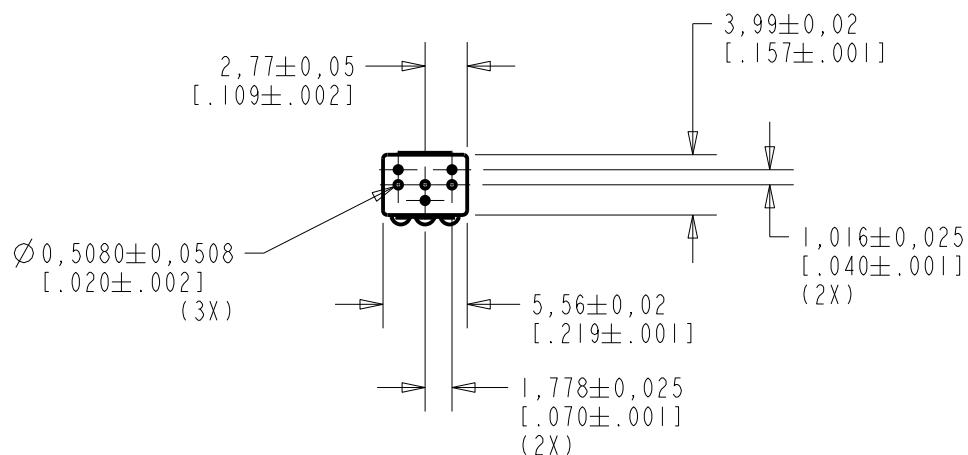


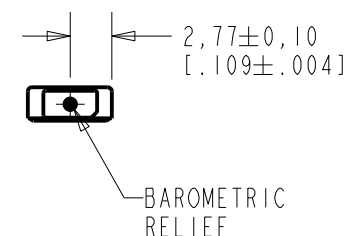
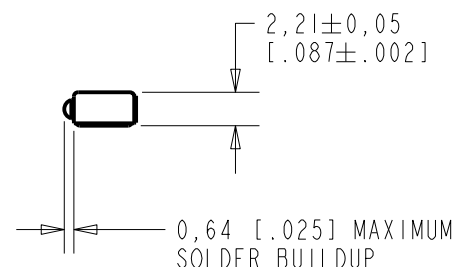
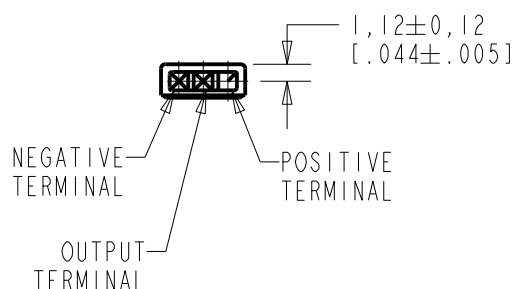
WP-30113-000

SHT 1.1



NOTE:

1. INCREASED PRESSURE AT THE SOUND INLET CAUSES A POSITIVE GOING VOLTAGE TO APPEAR AT THE OUTPUT TERMINAL, RELATIVE TO THE NEGATIVE TERMINAL.

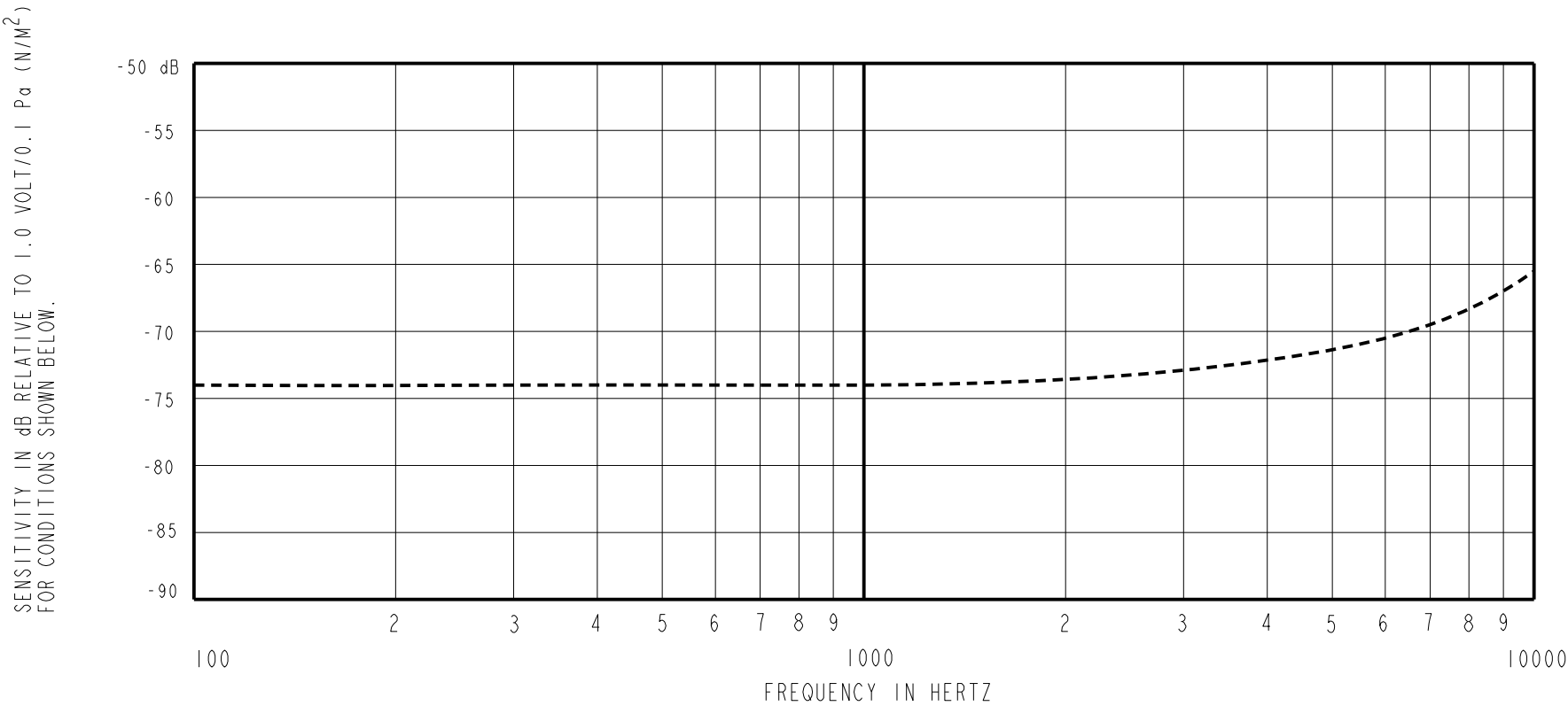


NOMINAL WEIGHT
.13 GRAM

DIMENSIONS IN MILLIMETERS [INCHES]

KNOWLES ELECTRONICS
ITASCA, ILLINOIS U.S.A.

Revision	C.O. #	Implementation Date	RELEASE LEVEL	REVISION
B	MI0104515	3-21-12	Active	B
A	MI0101516	7-11-07		
SCALE: 2:1			DR. BY LSY	DATE 7-11-07
DO NOT SCALE DRAWING			CK. BY GJP	DATE 7-16-07
TITLE: MICROPHONE			APP. BY GJP	DATE 7-16-07
OUTLINE DRAWING			WP-30113-000 SHT 1.1	

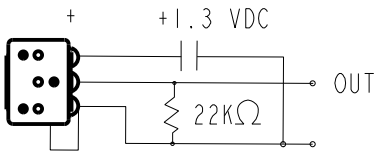


FREQUENCY	SENSITIVITY			DEVICE CONFORMITY	
	MIN.	NOM.	MAX.	RANGE OF DEVIATION FROM 1KHz	
100	---	-74.0	---	-4.0	+4.0
1000	-77.0	-74.0	-71.0	0.0	0.0
10000	---	-65.5	---	-4.5	-12.5

NOTES:

- ALL TEST DATA TAKEN WITH TEST CIRCUIT SHOWN BELOW.
- CASE CONNECTED TO NEGATIVE TERMINAL USING EXTERNAL JUMPER WIRE.
- MICROPHONE TO BE FUNCTIONAL WITH 10 VDC SUPPLY.
- CONFORMS TO REQUIREMENTS SHOWN ON 'ELECTRET MICROPHONE ENVIRONMENTAL QUALIFICATIONS TEST, EK-PA SHEET 2.2' WITH REF. FREQ. OF 1000 Hz.
- TYPICAL SENSITIVITY TO HUMIDITY AT 1000 Hz IS 0.02 dB/%RH.
- SENSITIVITY AND NOISE VALUES INDICATED ON THIS SPECIFICATION ARE VALID AT 50% HUMIDITY.

PORT LOCATION	DC SUPPLY	AMPLIFIER CURRENT DRAIN	SENSITIVITY CHANGE ON REDUCING SUPPLY TO 0.9VDC	"A" WEIGHTED NOISE (1 kHz EQUIV. SPL)
KA	1.3V	50uA MAX.	4.0 dB MAX.	40.0 dB MAX.



TEST CIRCUIT

KNOWLES ELECTRONICS
ITASCA, ILLINOIS U.S.A.

Revision	C.O. #	Implementation Date	RELEASE LEVEL		REVISION
B	M10104515	3-21-12	Active		B
A	M10101516	7-11-07			
WHEN TEST LIMITS ARE USED TO ESTABLISH INCOMING INSPECTION ACCEPTANCE/REJECTION CRITERIA, CORRELATION OF TEST EQUIPMENT WITH KNOWLES IS ALSO REQUIRED FOR ELIMINATION OF EQUIPMENT AND TEST METHOD VARIATION			DR. BY	DATE	
			LSY	7-11-07	
TITLE: MICROPHONE PERFORMANCE SPECIFICATION			CK. BY	DATE	
			GJP	7-16-07	
WP-30113-000 SHT 2.1			APP. BY	DATE	
			GJP	7-16-07	

Mouser Electronics

Authorized Distributor

Click to View Pricing, Inventory, Delivery & Lifecycle Information:

Knowles:

WP-30113-000