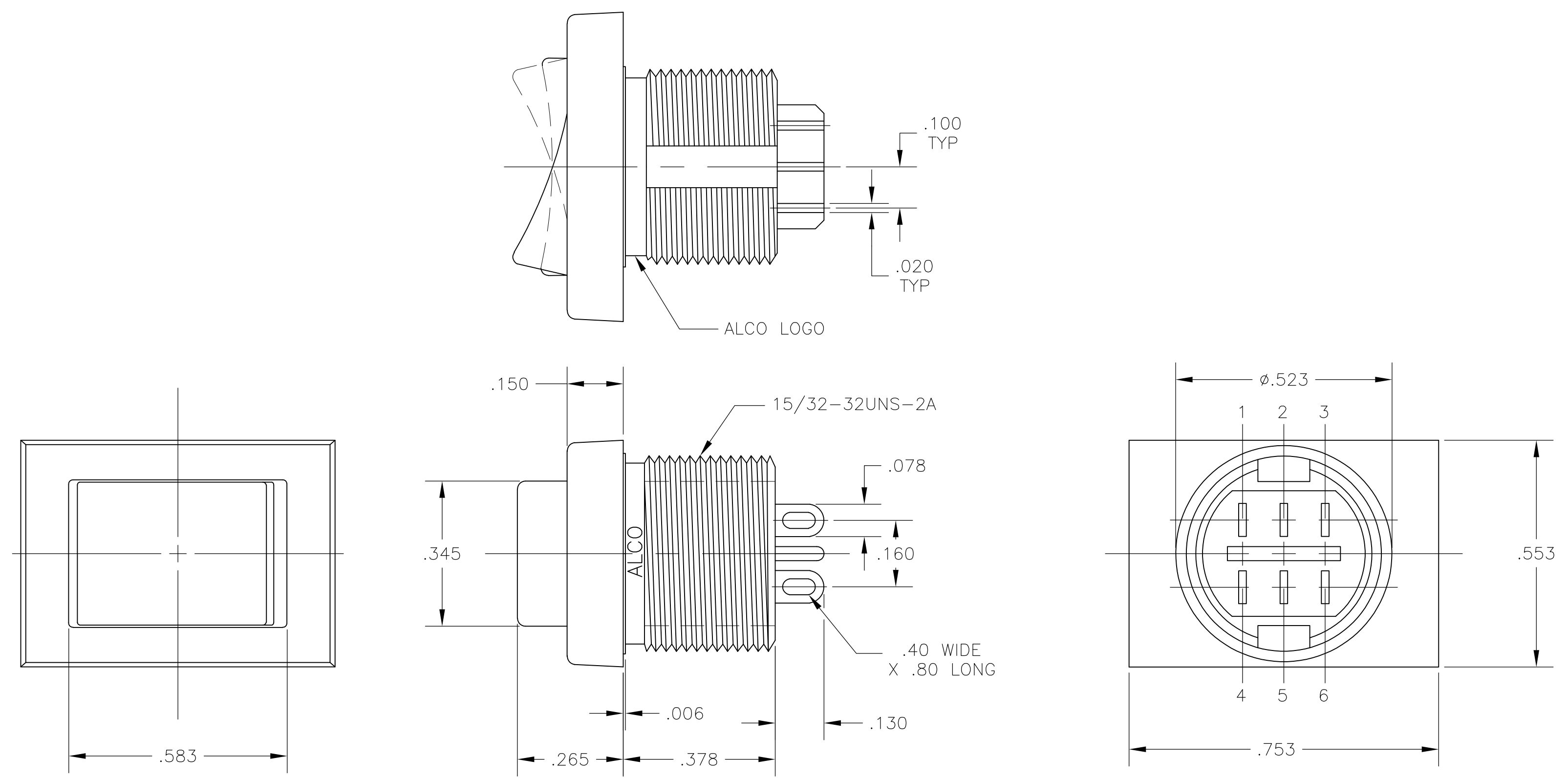


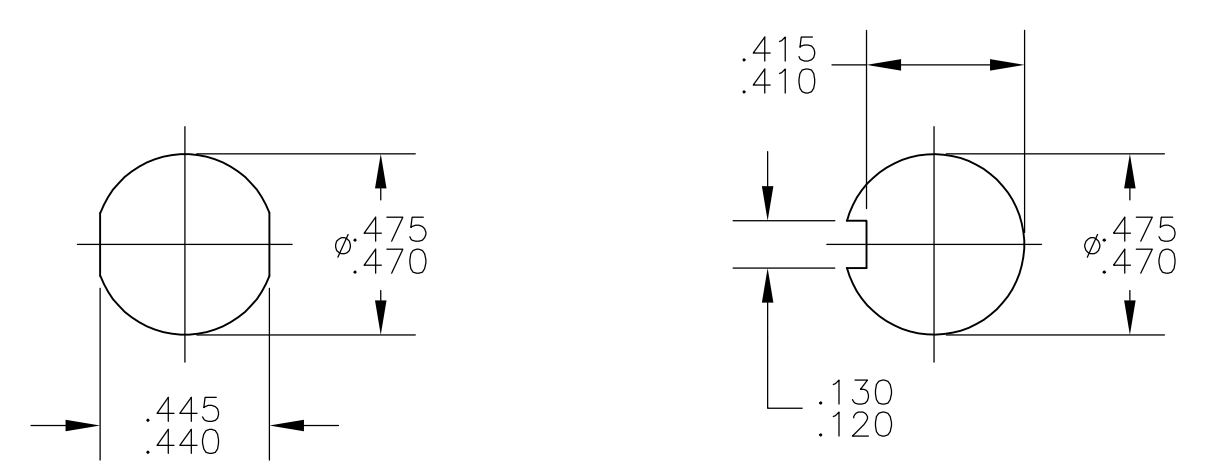
NOTES:

1. ALL MATERIALS AND FINISHES COMPLY WITH EU DIRECTIVE 2002/95/EC OF 27JAN2003 (RoHS).
2. TERMINAL NUMBERS ARE FOR REFERENCE ONLY AND DO NOT APPEAR ON THE SWITCHES.
3. MOUNTING HARDWARE: (1) HEX NUT AND (1) INTERNAL TOOTH LOCKWASHER SUPPLIED WITH SWITCH.



MATERIAL CHART		
COMPONENT NAME	BASE MATERIAL	FINISH
CASE	PPO, BLACK, UL94-HB	
SPRING	MUSIC WIRE	
SPRING, G FUNCTION	MUSIC WIRE	
INSULATOR	POLYETHERIMIDE, NATURAL	
TERMINAL, END, P, N & S FUNCTIONS	SILVER CLAD COPPER	SILVER OVER NICKEL
TERMINAL, CENTER, P, N & S FUNCTIONS	BRASS	GOLD OVER NICKEL
YOKE, P & S FUNCTIONS	BRASS	GOLD OVER NICKEL
ROCKER CONTACT, N FUNCTION	SILVER CLAD COPPER	
ROCKER CONTACT, P & S FUNCTIONS	SILVER CLAD COPPER	SILVER
NUT	BRASS	NICKEL
LOCKWASHER	STAINLESS STEEL	
TERMINAL SEAL	ACRYLIC RESIN	

SPECIFICATION CHART	
RATING	3A @ 125 VAC OR 28 VDC, RESISTIVE
INITIAL CONTACT RESISTANCE	20 MILLIOHMS MAX.
INSULATION RESISTANCE	1,000 MEGAOHMS MIN @ 500 VDC
DIELECTRIC WITHSTANDING VOLTAGE	500 V RMS AT SEA LEVEL
ELECTRICAL LIFE, 2 POSITION	80,000 CYCLES
ELECTRICAL LIFE, 3 POSITION	10,000 CYCLES
MECHANICAL LIFE, 2 POSITION	100,000 CYCLES
MECHANICAL LIFE, 3 POSITION	50,000 CYCLES
OPERATING TEMPERATURE	-20°C TO +80°C
STORAGE TEMPERATURE	-45°C TO +95°C



PANEL CUTOUTS  
SCALE 2:1

FUNCTION CHART							
PART NUMBER	ALCO P/N	POLE	THROWS	RATING	1 2 3	4 5 6	7 8
1825421-1	TRD23N10WL04	2	2	3A	ON	NONE	ON
1825421-2	TRD23N10WL04	2	2	3A	ON	OFF	ON
1825421-3	TRD23N10WL04	2	2	3A	(ON)	NONE	(ON)
					TERMINALS CONNECTED	2-1 5-4	- 2-3 5-6

NONE: NO MECHANICAL POSITION  
 OFF: MECHANICAL POSITION WITH NO ELECTRIC CONNECTION  
 (ON): MOMENTARY ACTION

THIS DRAWING IS A CONTROLLED DOCUMENT.		DRN R.WICJEL	24MAY82	Tyco Electronics Corporation Harrisburg, Pa 17105-3608	
DIMENSIONS: INCHES		TOLERANCES UNLESS OTHERWISE SPECIFIED:	APPROV K.F.	26MAY82	NAME
0 PLC ± -		1 PLC ± -	TRD SERIES ROCKER SWITCH, 2 POLE, 3A, WIRE LUG TERMINALS		
2 PLC ± -		3 PLC ± .010	PRODUCT SPEC		
4 PLC ± -		ANGLES ± -	APPLICATION SPEC		
MATERIAL SEE TABLE	FINISH SEE TABLE	WEIGHT	SIZE A1	CAGE CODE 00779	DRAWING NO 1825421
CUSTOMER DRAWING		SCALE	4:1	SHEET	1 OF 1

# Mouser Electronics

Authorized Distributor

Click to View Pricing, Inventory, Delivery & Lifecycle Information:

[TE Connectivity:](#)

[1825421-3](#)