

THIS DRAWING IS UNPUBLISHED.

RELEASED FOR PUBLICATION

ALL RIGHTS RESERVED.

© COPYRIGHT - By -

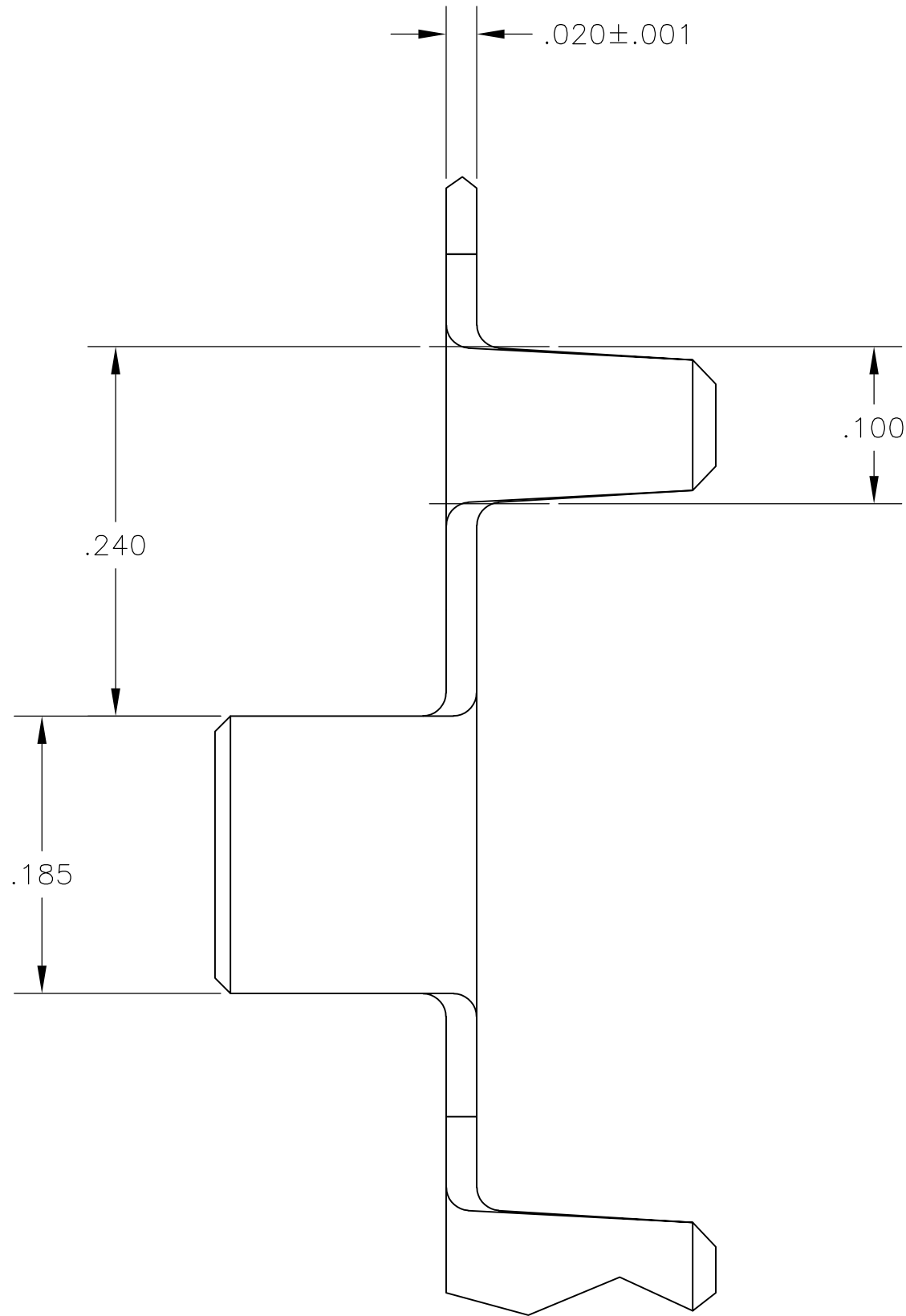
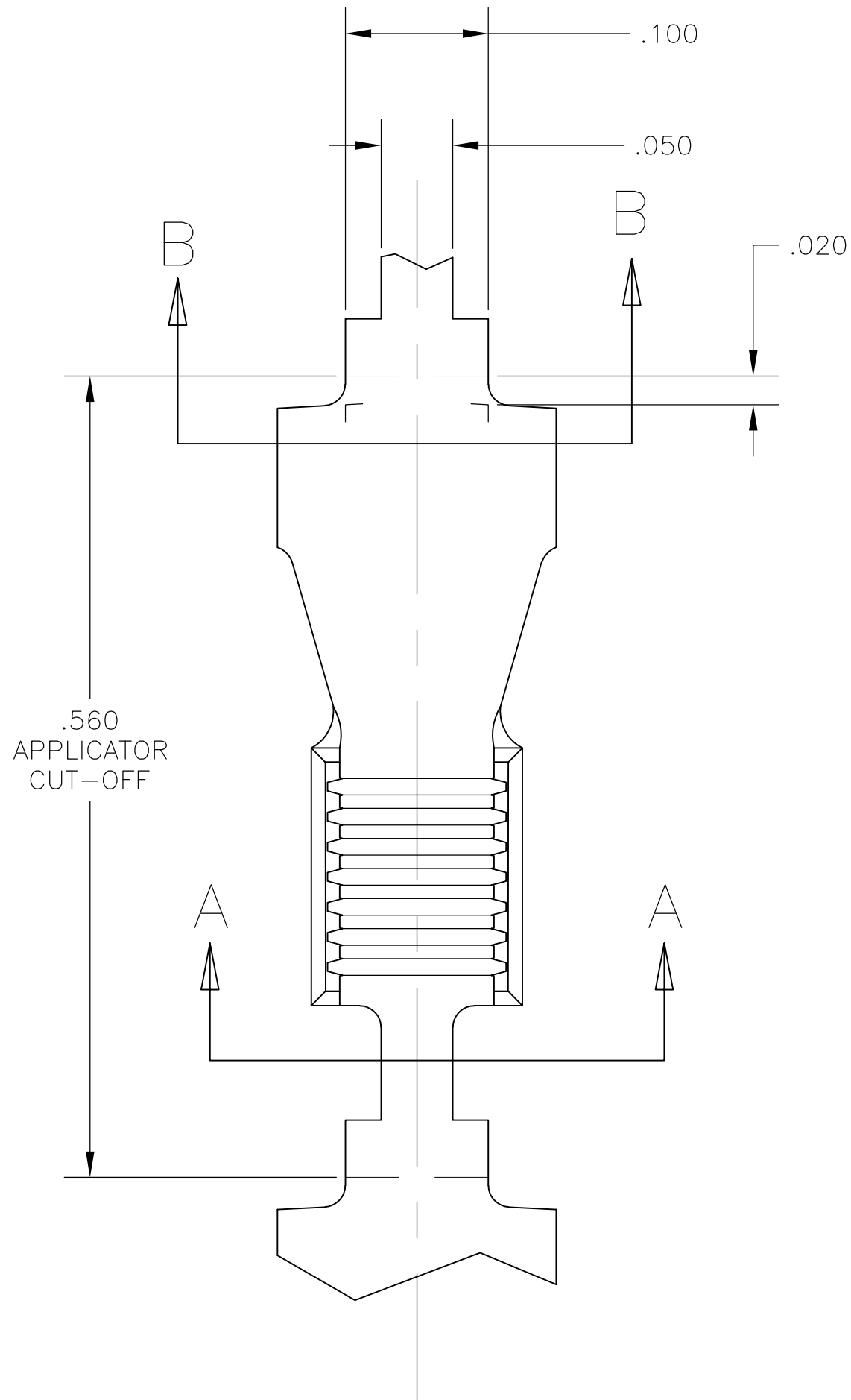
LOC	DIST	REVISIONS					
		P	LTR	DESCRIPTION	DATE	DWN	APVD
AF	14		B	REVISE PER ECR -13-003819	06JAN13	GRZ	DZ

D

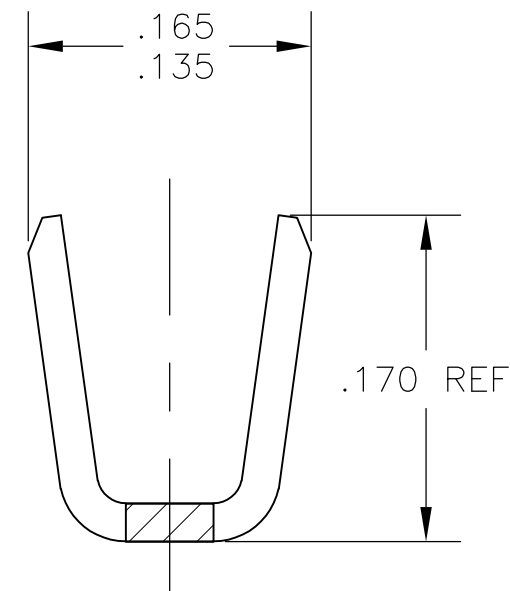
C

B

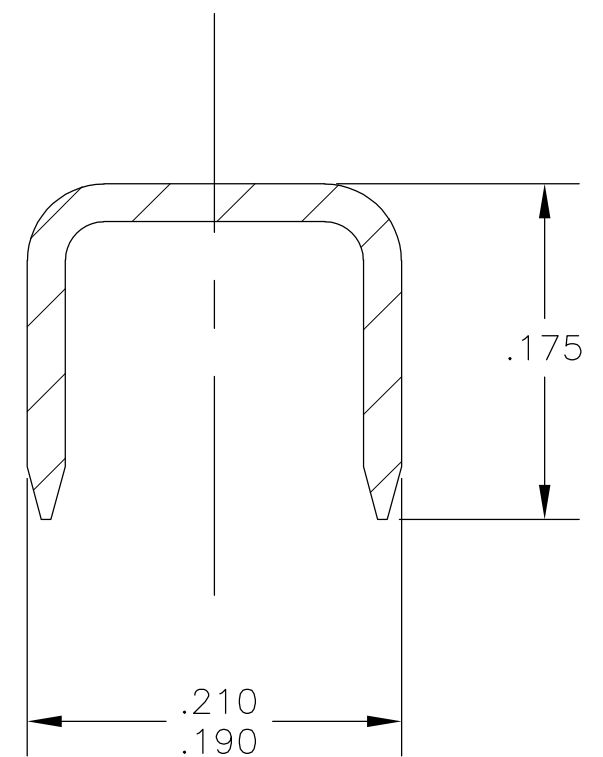
A



- 1 PRODUCT PROVIDED IN STRIP FORM ON REELS;
BREAKS MAY BE PRESENT.
- 2 WIRE RANGE: 3000-6000 CMA.
- 3 BOARD THICKNESS: .062
- 4 BOARD HOLE SIZE: .110±.005 X .215±.005.
- 5 PRELIMINARY - NOT FOR PRODUCTION.



SECTION A-A



SECTION B-B

1742324

B

A

THIS DRAWING IS A CONTROLLED DOCUMENT.		DWN	M.S. FEHER	25JUL2005	REVERSE			1742324-2
		CHK	G.D. PORTA	27JUL2005	STANDARD			5 1742324-1
DIMENSIONS: INCHES		APVD	G.D. PORTA	27JUL2005	REELING			PART NUMBER
		PRODUCT SPEC			TE Connectivity			
		APPLICATION SPEC			NAME			
		FINISH			SPLICE, AMPLIVAR STAKING, SEVEN (7) SERRATIONS			
MATERIAL		WEIGHT			SIZE	CAGE CODE	DRAWING NO	RESTRICTED TO
BRASS		-			A2	00779	C=1742324	-
TIN PLATE		CUSTOMER DRAWING			SCALE		SHEET	REV
		8:1		1	of 1			B

Mouser Electronics

Authorized Distributor

Click to View Pricing, Inventory, Delivery & Lifecycle Information:

[TE Connectivity:](#)

[1742324-2](#)