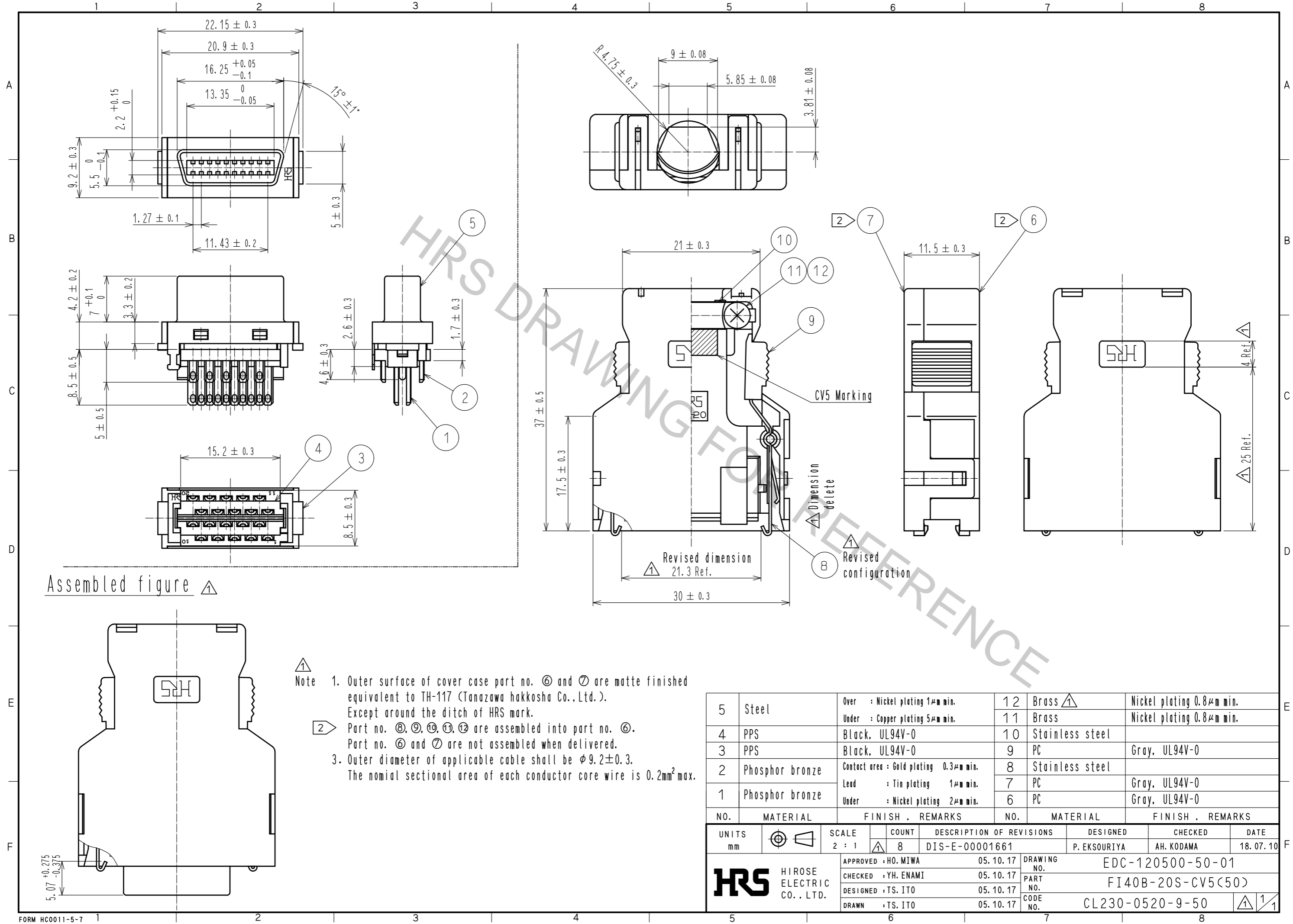


Dec.1.2018 Copyright 2018 HIROSE ELECTRIC CO., LTD. All Rights Reserved.
 In case that the application demands a high level of reliability, such as automotive,
 please contact a company representative for further information.



Assembled figure \triangle

- \triangle Note
- Outer surface of cover case part no. $\textcircled{6}$ and $\textcircled{7}$ are matte finished equivalent to TH-117 (Tanazawa hakkosha Co., Ltd.). Except around the ditch of HRS mark.
 - Part no. $\textcircled{8}$, $\textcircled{9}$, $\textcircled{10}$, $\textcircled{11}$, $\textcircled{12}$ are assembled into part no. $\textcircled{6}$. Part no. $\textcircled{6}$ and $\textcircled{7}$ are not assembled when delivered.
 - Outer diameter of applicable cable shall be $\phi 9.2 \pm 0.3$. The nominal sectional area of each conductor core wire is 0.2 mm^2 max.

5	Steel	Over : Nickel plating $1 \mu\text{m}$ min. Under : Copper plating $5 \mu\text{m}$ min.	12	Brass \triangle	Nickel plating $0.8 \mu\text{m}$ min.
4	PPS	Black, UL94V-0	11	Brass	Nickel plating $0.8 \mu\text{m}$ min.
3	PPS	Black, UL94V-0	10	Stainless steel	
2	Phosphor bronze	Contact area : Gold plating $0.3 \mu\text{m}$ min. Lead : Tin plating $1 \mu\text{m}$ min.	9	PC	Gray, UL94V-0
1	Phosphor bronze	Under : Nickel plating $2 \mu\text{m}$ min.	8	Stainless steel	
			7	PC	Gray, UL94V-0
			6	PC	Gray, UL94V-0
NO.	MATERIAL	FINISH . REMARKS	NO.	MATERIAL	FINISH . REMARKS
UNITS	\odot \triangle	SCALE	COUNT	DESCRIPTION OF REVISIONS	
mm		2 : 1	\triangle 8	DIS-E-00001661	
DESIGNED		CHECKED		DATE	
P. EKSOURIYA		AH. KODAMA		18. 07. 10	
APPROVED : HO. MIWA			05. 10. 17		
CHECKED : YH. ENAMI			05. 10. 17		
DESIGNED : TS. ITO			05. 10. 17		
DRAWN : TS. ITO			05. 10. 17		
DRAWING NO.		EDC-120500-50-01			
PART NO.		FI40B-20S-CV5(50)			
CODE NO.		CL230-0520-9-50			
		\triangle 1/1			

Mouser Electronics

Authorized Distributor

Click to View Pricing, Inventory, Delivery & Lifecycle Information:

[Hirose Electric:](#)

[FI40B-20S-CV5\(50\)](#)