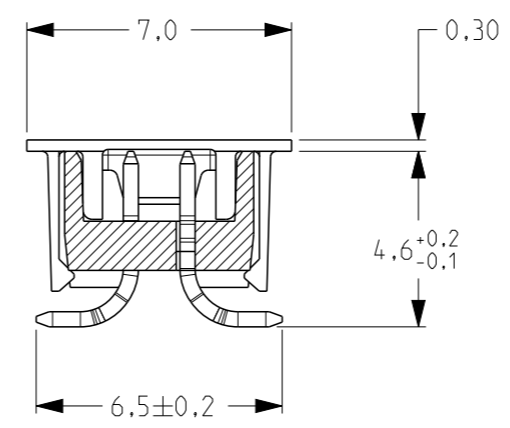
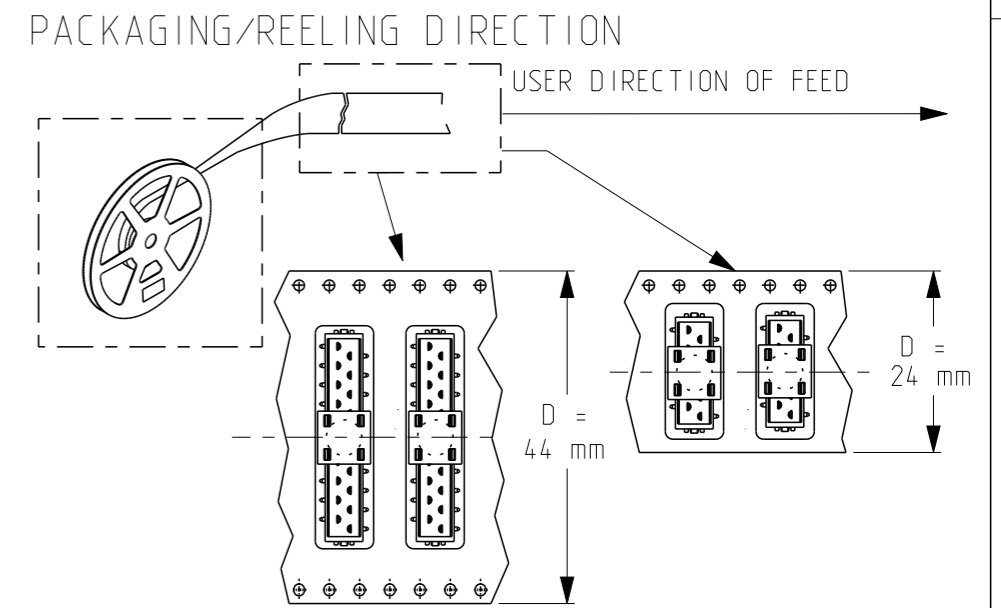
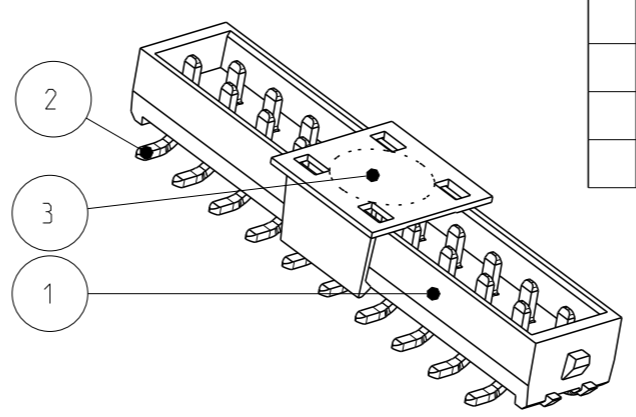
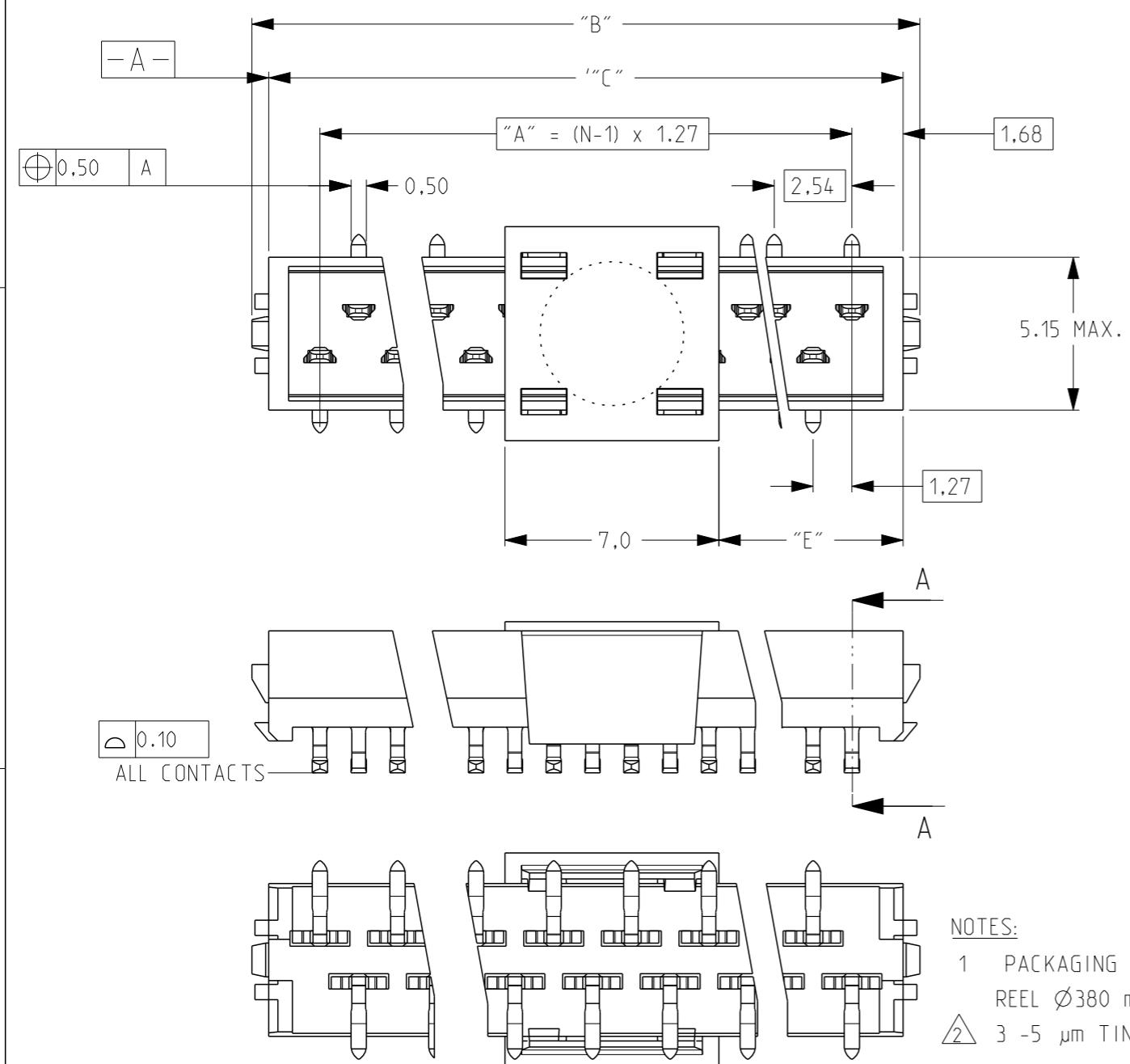


THIS DRAWING IS UNPUBLISHED. RELEASED FOR PUBLICATION DATE: - 2011  
 © COPYRIGHT 2011 ALL RIGHTS RESERVED.

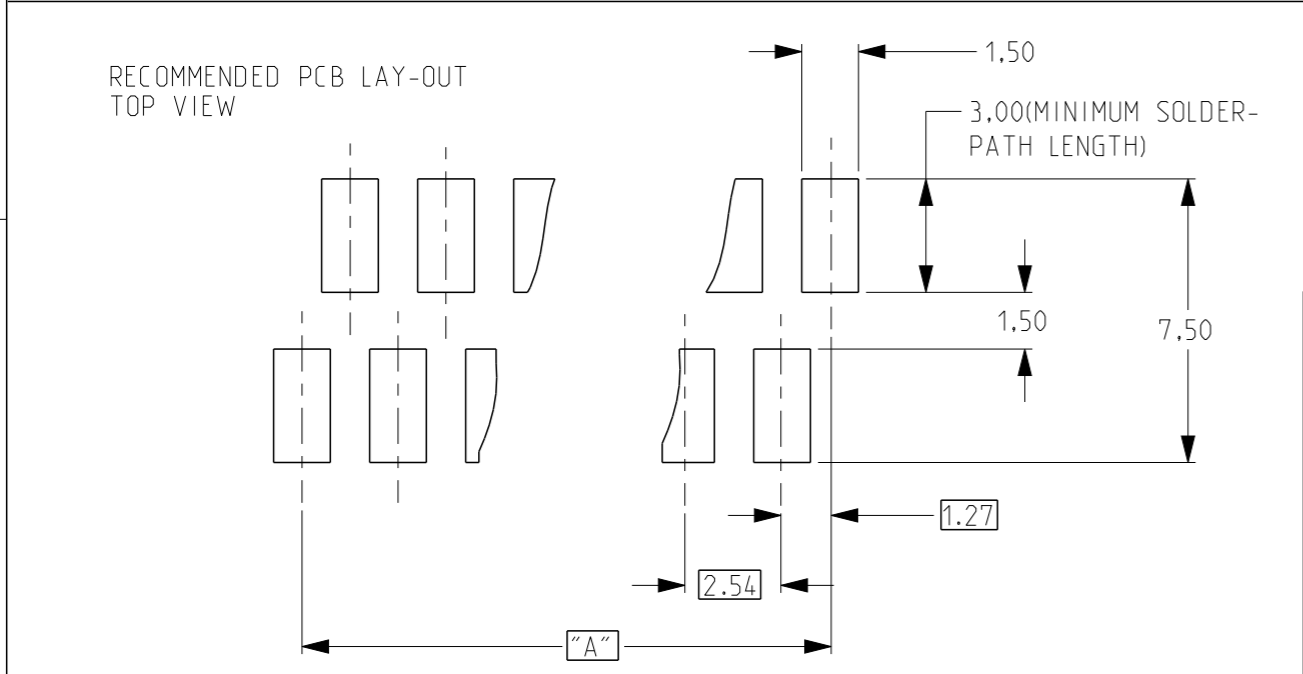
| LOC | DIST | REVISIONS      |           |     |      |  |
|-----|------|----------------|-----------|-----|------|--|
| P   | LTR  | DESCRIPTION    | DATE      | DWN | APVD |  |
| H   | -    | ECR -13-008840 | 30AUG2013 | SMT | RP   |  |



SECTION A-A

- NOTES:  
 1 PACKAGING ACCORDING EIA-481/DIN IEC 286, REEL Ø380 mm  
 2 3 -5 µm TIN OVER 0.5 µm NICKEL PLATING.

| NUMBER OF POSITIONS N | PN -WITHOUT | PN -WITH   | "A"  | "B"  | "C"  | TAPE WIDTH "D" | "E"  |
|-----------------------|-------------|------------|------|------|------|----------------|------|
| 20                    | 2-338728-0  | 9-338728-0 | 24.1 | 28.6 | 27.5 | 44             | 10.2 |
| 18                    | 1-338728-8  | 8-338728-8 | 21.6 | 26.1 | 24.9 | 44             | 8.9  |
| 16                    | 1-338728-6  | 8-338728-6 | 19.0 | 23.5 | 22.4 | 44             | 7.7  |
| 14                    | 1-338728-4  | 8-338728-4 | 16.5 | 21.0 | 19.9 | 44             | 6.4  |
| 12                    | 1-338728-2  | 8-338728-2 | 14.0 | 18.5 | 17.3 | 44             | 5.1  |
| 10                    | 1-338728-0  | 8-338728-0 | 11.4 | 15.9 | 14.8 | 24             | 3.9  |
| 8                     | 338728-8    | 7-338728-8 | 8.9  | 13.4 | 12.2 | 24             | 2.6  |
| 6                     | 338728-6    | 7-338728-6 | 6.4  | 10.8 | 9.7  | 24             | 1.3  |
| 4                     | 338728-4    | 7-338728-4 | 3.8  | 8.3  | 7.2  | 24             | 0.1  |



THIS DRAWING IS A CONTROLLED DOCUMENT.

| DIMENSIONS:  | TOLERANCES UNLESS OTHERWISE SPECIFIED: |
|--------------|----------------------------------------|
| mm           |                                        |
| 0 PLC        | ±0.2                                   |
| 1 PLC        | ±0.1                                   |
| 2 PLC        | ±0.05                                  |
| 3 PLC        | ±0.01                                  |
| 4 PLC ANGLES | ±°                                     |
| MATERIAL     | FINISH                                 |
| SEE TABLE    | SEE TABLE                              |

|                  |                        |                                         |               |
|------------------|------------------------|-----------------------------------------|---------------|
| 3                | PICK AND PLACE FEATURE | PA 4.6, 30% GF, COLOR GREY              |               |
| 2                | CONTACT                | TIN BRASS                               |               |
| 1                | HOUSING                | Pa 4.6, 30% GF, COLOR: RED              |               |
| Item no          | Description            | Material                                | Finish        |
| DWN              | M.Gosselink            |                                         |               |
| CHK              | -                      |                                         |               |
| APVD             | -                      | NAME                                    |               |
| PRODUCT SPEC     | 108-19052              | Micro-MaTch Male On Board SMD connector |               |
| APPLICATION SPEC | 114-13318              | SIZE                                    | CAGE CODE     |
| WEIGHT           | -                      | A3                                      | 00779         |
| CUSTOMER DRAWING |                        | DRAWING NO                              | RESTRICTED TO |
|                  |                        | ©=338728                                | -             |
|                  |                        | SCALE                                   | SHEET         |
|                  |                        | 5:1                                     | 1 OF 1        |
|                  |                        | REV                                     | H             |

# Mouser Electronics

Authorized Distributor

Click to View Pricing, Inventory, Delivery & Lifecycle Information:

[TE Connectivity:](#)

[1-338728-6](#)