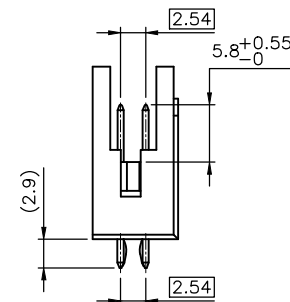
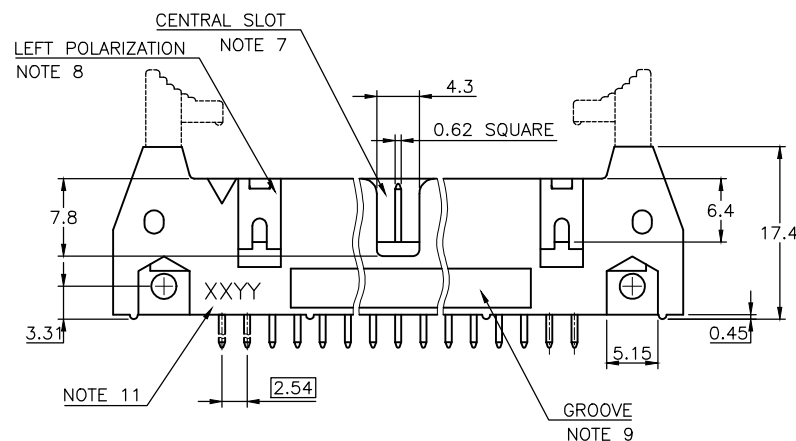


RoHS COMPATIBLE, SEE NOTE 12

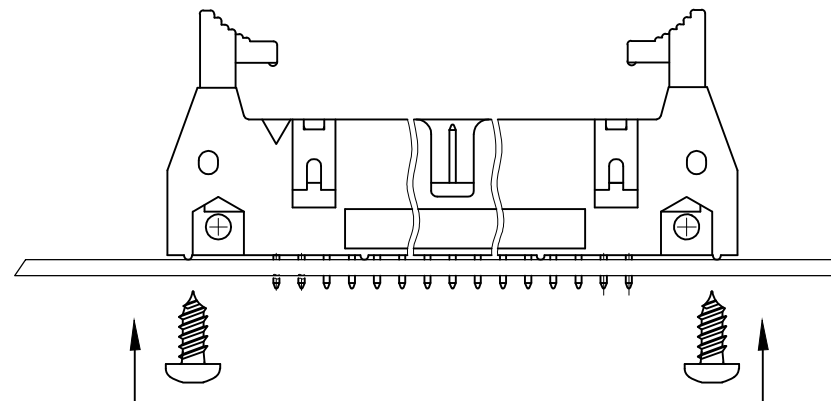
TOTAL NUMBER OF POSITIONS SEE SHEET 2

0= WITHOUT LATCH
1= STANDARD LATCH
2= LOW PROFILE LATCH

- 1 - HOUSING MAT'L : GLASS FILLED THERMOPLASTIC. UL94V-0 COLOR: BLUE
- 2 - PIN MATERIAL : PHOSPHOR BRONZE
- 3 - 0.76 μ m GOLD/GXT
(PdNi WITH GOLD FLASH) ON CONTACT AREA
2 μ m MIN MATTE TIN ON TAIL.
UNDERPLATE : 1.27 μ m Ni MIN
- 4 - PRODUCT PACKAGED IN TUBES
- 5 - 40N MIN LATCH RETENTION FORCE
AT FIRST EXTRACTION
- 6 - TO DETERMINE DIMENSIONS :
N = NUMBER OF POSITIONS PER ROW
EXAMPLE : 8 POS N x 2.54 = 20.32mm
- 7 - NO CENTRAL SLOT ON POSITIONS 6 & 8
- 8 - NO LEFT POLARIZATION ON POSITIONS 06, 08, 10, 14.
- 9 - NO GROOVE ON POSITIONS 06, 08, 10, 14, 30, 34
- 10 - RETENTION LEGS LOCATED IN THE CENTER OF THE CONNECTOR
- 11 - MARKING : XX = YEAR CODE
YY = WEEK NUMBER
- 12 - RoHS COMPATIBLE PRODUCT SPECIFICATIONS
 - a - PLATING:
 - "LF" MEANS THE PRODUCT IS LEAD-FREE,
2 μ m MINIMUM MATTE TIN OVER 1.27 μ m
MINIMUM NICKEL UNDERPLATE.
 - b - MANUFACTURING PROCESS COMPATIBILITY
 - THE HOUSING WILL WITHSTAND EXPOSURE TO
260°C \pm 5°C SOLDER BATH TEMPERATURE FOR
5 SECONDS IN A WAVE SOLDER APPLICATION
WITH A 1.6mm MIN THICK CIRCUIT BOARD.
 - c - LABELING:
 - MEETS PACKAGING SPECS AS PER GS-14-920
 - d - LEGAL STATEMENT: SEE GS-47-0004

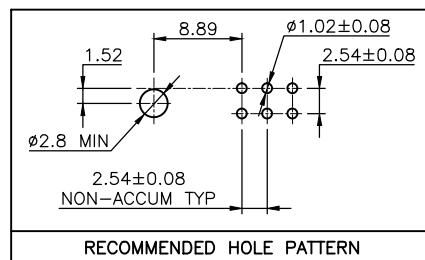
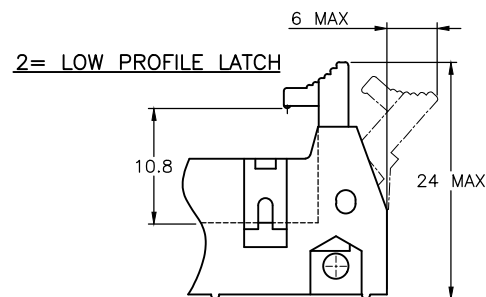
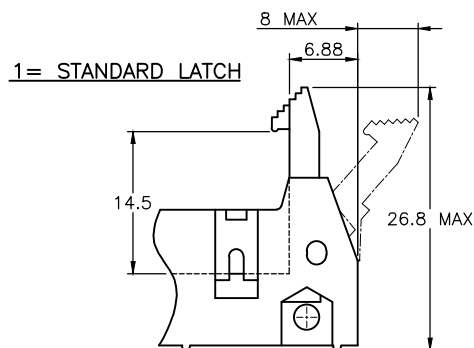
[illegible]

TOTAL NUMBER OF POSITIONS	
06	26
08	34
10	40
14	44
16	50
18	60
20	64



WHEN THE CONNECTORS NEED TO BE FIXED ON THE PCB'S
THE STAINLESS SCREWS REF TC POZI DIN7981 Ø2.9 X 6.5MM
TO BE USED

LATCHING FEATURES :



mat'l. code SEE NOTES				surface ISO 1302 ✓	tolerance ISO 406 ISO 1101	projection mm	product family QUICKIE
ltr	ecn no	dr	date	tolerances unless otherwise specified			title
A	B-20413	BVE	15.03.10	angles	linear .X ±0.3	mm	SHR.EL.HEADER
					linear .XX ±0.13	scale 2:1	STR, RETENTION LEGS
					linear .XXX ±0.05		
		dr	B.VERNIER	15.03.10			dwg no
		enr	L.MULIN	15.03.10			sheet 2 of
		chr	JCO	15.03.10			71980
		appd	JCO	15.03.10			size
sheet	revision						type
index	sheet						CUSTOMER Drawing



Mouser Electronics

Authorized Distributor

Click to View Pricing, Inventory, Delivery & Lifecycle Information:

[FCI / Amphenol:](#)

[71980-114LF](#) [71980-116LF](#) [71980-120LF](#) [71980-126LF](#) [71980-134LF](#) [71980-140LF](#)