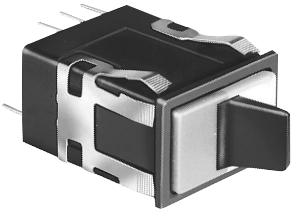


# Manual Switches

## Electronic Control Paddle

### INCANDESCENT OR NON-LIGHTED DISPLAY



Covers ordered separately.

#### FEATURES

- Silver or gold contacts.
- 1, 2 or 4 poles.
- Toggle type paddle operators permanently installed in rectangular housings.
- Covers for the switch housing may be lighted or unlighted.
- UL recognized, CSA certified.
- Lamps can be furnished installed or ordered separately.
- Lamp circuit independent of switch circuit.

Electrical Data	page 19
Paddle Covers	page 47
Lamps and LEDs	page 58
Accessories	page 57
Mounting Dimensions	pages 59, 62

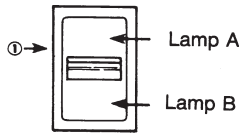


\*AML23 Series: 1 pole and 2-pole only.

#### \*AML23 ORDER GUIDE

AML23 E	B	A	2	AA	01
<b>Housing Type</b>	<b>Operator/Bezel Color</b>	<b>Incandescent Lamp Type</b>	<b>Terminal Type</b>	<b>Circuitry Codes</b>	<b>Operating Action</b>
<b>AML23 E</b> Rectangular Non-Lighted  <b>AML23 F</b> Rectangular 1 Lamp Ckt. (A)  <b>AML23 G</b> Rectangular 2 Lamp Ckts. (A & B)	<b>B</b> Black/Black	<b>A</b> No Lamp Installed  <b>B</b> 6 V Lamp*  <b>C</b> 14 V Lamp*  <b>E</b> 28 V Lamp*	<b>2</b> .110 × .020 (Solder or Quick-Connect)  <b>3</b> .025 × .025 (Printed Ckt., or Push-on)	Insert Code letters as shown in Circuitry Chart	Insert Code numbers from Operating Action Chart

\* Lamps will be installed per each lamp circuit specified in the Housing Type.



① The "MICRO SWITCH" identification is shown on this side of the switch housings.

Example: **AML23EBA2AA01**

Rectangular non-lighted paddle switch housing; black paddle and bezel; .110 × .020 terminals; with one circuit ON and one circuit OFF in each extreme operator position (maintained).

#### CIRCUITRY

Silver Contacts	Gold Contacts	2-Position		3-Position		
AA	BA					
AC	BC					
(Non-illuminated switches only)						
CA	DA					
CC	DC					
(Non-illuminated switches only)						

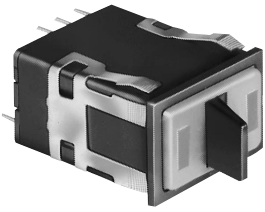
#### OPERATING ACTION

2-Position:		
Maint.	<b>01</b> None	Maint.
Mom.	<b>02</b> None	Maint.
Maint.	<b>03</b> None	Mom.
3-Position:		
Maint.	<b>04</b> Maint.	Maint.
Mom.	<b>05</b> Maint.	Mom.
Maint.	<b>06</b> Maint.	Mom.
Mom.	<b>07</b> Maint.	Maint.

# Manual Switches

## Electronic Control Paddle

### LED DISPLAY



Covers with LED "window" ordered separately.

### FEATURES

- Identical to AML23, except furnished with one or two rectangular high efficiency LED's which give flush display area and wide angle indication.
- Available with or without diode protection for LED's.
- LED circuit independent of switch circuit.

Electrical Data	page 19
Paddle Covers	page 48
Lamps and LEDs	page 58
Accessories	page 57
Mounting Dimensions	pages 59, 62

- 5 thru 24 VDC devices have internal resistor to maintain current at nominal 20 mA.
- UL recognized, CSA certified.



\*AML25 Series: 1 pole and 2-pole only.

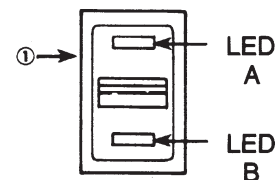
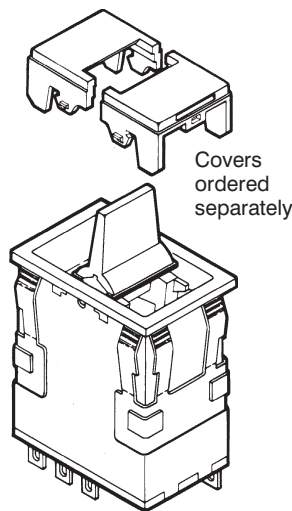
### AML25 ORDER GUIDE

Housing Type	Operator/ Bezel Color	LED Voltage	Terminal Type/ Diode Protection	Circuitry Codes	Operating Code	LED Color (LED A)	LED Color (LED B)
<b>AML25 F</b> Rectangular 1 LED	<b>B</b> Black/Black	<b>B</b> V*	<b>2</b> .110 × .020 (Solder or Q-C)	Insert code letters as shown in Circuitry Chart	Insert code numbers from Operating Action Chart	<b>R</b> Red	<b>R</b> Red
<b>AML25 G</b> Rectangular 2 LED's		<b>C</b> 5 V	<b>3</b> .025 × .025 (Printed Ckt., or Push-On)	LED version available only with		<b>Y</b> Yellow	<b>Y</b> Yellow
		<b>D</b> 10 V	<b>8</b> .110 × .020 w/Diode protection	<b>AA</b>		<b>G</b> Green	<b>G</b> Green
		<b>E</b> 15 V		<b>BA</b>		<b>X</b> No LED	<b>X</b> No LED
		<b>F</b> 24 V		<b>CA</b>			
				<b>DA</b>			

\* See LED application information for devices without current-limiting resistor, page 58.

Example: **AML25FBB2AA01RX**  
Rectangular paddle switch; illuminated with one red LED, this device has a black paddle and bezel, and .110 × .020 terminals; with one circuit ON and one circuit OFF in each extreme operator position (maintained).

NOTE: For further information on replacement LED's, call the 800 number.



① The "MICRO SWITCH" identification is shown on this side of the switch housings.

Manuals

# Mouser Electronics

Authorized Distributor

Click to View Pricing, Inventory, Delivery & Lifecycle Information:

## Honeywell:

[AML23EBA2AA01](#) [AML23EBA2AA02](#) [AML23EBA2AA03](#) [AML23EBA2AA04](#) [AML23EBA2AA05](#) [AML23EBA2AA07](#)  
[AML23EBA2AC01](#) [AML23EBA2AC02](#) [AML23EBA2AC03](#) [AML23EBA2AC04](#) [AML23EBA2AC05](#) [AML23EBA2AC06](#)  
[AML23EBA2AC07](#) [AML23EBA2BA01](#) [AML23EBA2BA04](#) [AML23EBA2BA05](#) [AML23EBA2BC01](#) [AML23EBA2BC05](#)  
[AML23EBA2BC07](#) [AML23EBA2CA01](#) [AML23EBA2CA02](#) [AML23EBA2CA04](#) [AML23EBA2CA05](#) [AML23EBA2CA06](#)  
[AML23EBA2CA07](#) [AML23EBA2CC01](#) [AML23EBA2CC02](#) [AML23EBA2CC04](#) [AML23EBA2CC05](#) [AML23EBA2DA04](#)  
[AML23EBA2DA05](#) [AML23EBA2DA06](#) [AML23EBA2DA07](#) [AML23EBA2DC01](#) [AML23EBA3AA01](#) [AML23EBA3AC01](#)  
[AML23EBA3AC05](#) [AML23EBA3BC06](#) [AML23EBA3CC01](#) [AML23EBA3CC04](#) [AML23EBA3DC01](#) [AML23FBA2AA01](#)  
[AML23FBA2AA04](#) [AML23FBA2BA01](#) [AML23FBA2BA02](#) [AML23FBA2CA01](#) [AML23FBA2CA04](#) [AML23FBA2CA05](#)  
[AML23FBA2DA01](#) [AML23FBA2DA05](#) [AML23FBA3BA05](#) [AML23FBB2AA01](#) [AML23FBC2AA01](#) [AML23FBC2AA06](#)  
[AML23FBC2CA04](#) [AML23FBC3AA01](#) [AML23FBE2AA01](#) [AML23FBE2AA02](#) [AML23FBE2CA01](#) [AML23FBE2CA05](#)  
[AML23FBE2CA06](#) [AML23GBA2AA01](#) [AML23GBA2AA02](#) [AML23GBA2AA03](#) [AML23GBA2AA04](#) [AML23GBA2AA05](#)  
[AML23GBA2AA06](#) [AML23GBA2BA01](#) [AML23GBA2BA02](#) [AML23GBA2BA05](#) [AML23GBA2CA01](#) [AML23GBA2CA02](#)  
[AML23GBA2CA03](#) [AML23GBA2CA04](#) [AML23GBA2CA05](#) [AML23GBA2CA06](#) [AML23GBA2CA07](#) [AML23GBA2DA01](#)  
[AML23GBA2DA04](#) [AML23GBA3AA04](#) [AML23GBA3AA05](#) [AML23GBA3CA06](#) [AML23GBB2AA04](#) [AML23GBB2AA05](#)  
[AML23GBB2CA05](#) [AML23GBB3AA04](#) [AML23GBC2AA01](#) [AML23GBC2AA04](#) [AML23GBC2CA01](#)  
[AML23GBC2CA02](#) [AML23GBC2CA04](#) [AML23GBC3AA05](#) [AML23GBE2AA01](#) [AML23GBE2AA02](#) [AML23GBE2AA04](#)  
[AML23GBE2AA05](#) [AML23GBE2AA06](#) [AML23GBE2BA02](#) [AML23GBE2CA01](#) [AML23GBE2CA02](#)