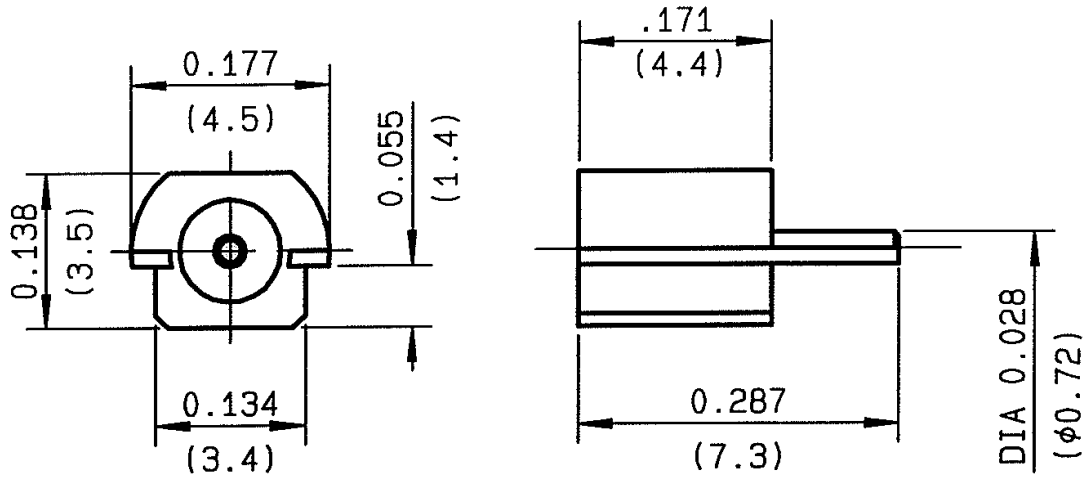


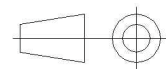
STRAIGHT FEMALE, END LAUNCH

R110.422.100

Series : MMCX



All dimensions are in mm.



COMPONENTS	MATERIALS	PLATINGS (μm)
BODY	BRASS	GOLD OVER NICKEL
CENTER CONTACT	BERYLLIUM COPPER	GOLD OVER NICKEL
OUTER CONTACT	-	-
INSULATOR	PTFE	-
GASKET	-	-
OTHERS PARTS	-	-
.	.	.
.	.	.

Issue : 0422 A

In the effort to improve our products, we reserve the right to make changes judged to be necessary.


RADIALL®

STRAIGHT FEMALE, END LAUNCH

R110.422.100

Series : MMCX

PACKAGING

Standard	Unit	Other
100	'W' option	Contact us

SPECIFICATION**ELECTRICAL CHARACTERISTICS**

Impedance	50	Ω
Frequency	0-6	GHz
VSWR	AD + 0.000	x F(GHz) Maxi
Insertion loss	AD	$\sqrt{F(\text{GHz})}$ dB Maxi
RF leakage	- (AD)	- F(GHz)) dB Maxi
Voltage rating	250	Veff Maxi
Dielectric withstanding voltage	500	Veff mini
Insulation resistance	1000	M Ω mini

ENVIRONMENTAL

Operating temperature	-55/+155	$^{\circ}\text{C}$
Hermetic seal	NA	Atm.cm3/s
Panel leakage	NA	

OTHERS CHARACTERISTICS

Assembly instruction

Others :

MECHANICAL CHARACTERISTICS

Center contact retention		
Axial force – Mating end	10	N mini
Axial force – Opposite end	10	N mini
Torque	NA	N.cm mini
Recommended torque		
Mating	NA	N.cm
Panel nut	NA	N.cm
Mating life	500	Cycles mini
Weight	0.390	g

Issue : 0422 A

In the effort to improve our products, we reserve the right to make changes judged to be necessary.

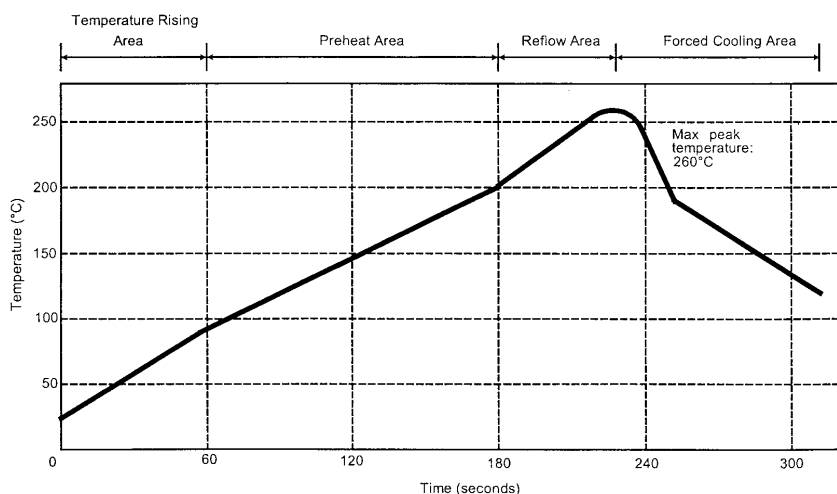
**RADIALL®**

STRAIGHT FEMALE, END LAUNCH**R110.422.100**

Series : MMCX

SOLDER PROCEDURE

1. Deposition of solder paste 'Sn Ag4 Cu0.5' on mounting zone by screen printing application. We recommend a low residue flux.
We advise a thickness of 150 microns (0.006 inch). Verify that the edges of the zone are clean.
2. Placement of the receptacle on the mounting zone with an automatic machine of 'pick and place' type.
Video camera is recommended for the positioning of the component. Adhesive agents must not be used on the receptacle.
3. Soldering by infra-red reflow.
Below, please find the typical profile to use.
4. Cleaning of printed circuit boards.
5. Checking of solder joints and position of the component by visual inspection.

TEMPERATURE PROFILE

Parameter	Value	Unit
Temperature rising Area	1 - 4	°C/sec
Max Peak Temperature	260	°C
Max dwell time @260°C	10	sec
Min dwell time @235°C	20	sec
Max dwell time @235°C	60	sec
Temperature drop in cooling Area	-1 to - 4	°C/sec
Max dwell time above 100°C	420	sec

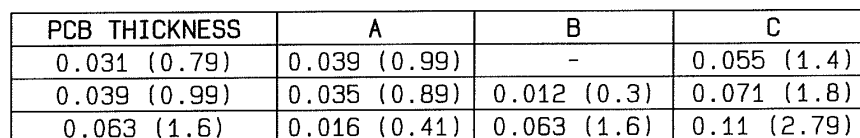
Issue : 0422 A

In the effort to improve our products, we reserve the right to make changes judged to be necessary.



R110.422.100

—



Technical drawing of a stepped cylindrical part. The drawing shows a cross-section of the part with the following dimensions:

- Overall height: 0.177 (4.5)
- Overall width: 0.29 (7.355)
- Width of the top step: 0.173 (4.4)
- Height of the top step: 0.107 (2.72)
- Height of the bottom step: 0.028 (0.72)


RADIALL®

Mouser Electronics

Authorized Distributor

Click to View Pricing, Inventory, Delivery & Lifecycle Information:

Radial:

[R110422100](#) [R110422100W](#)