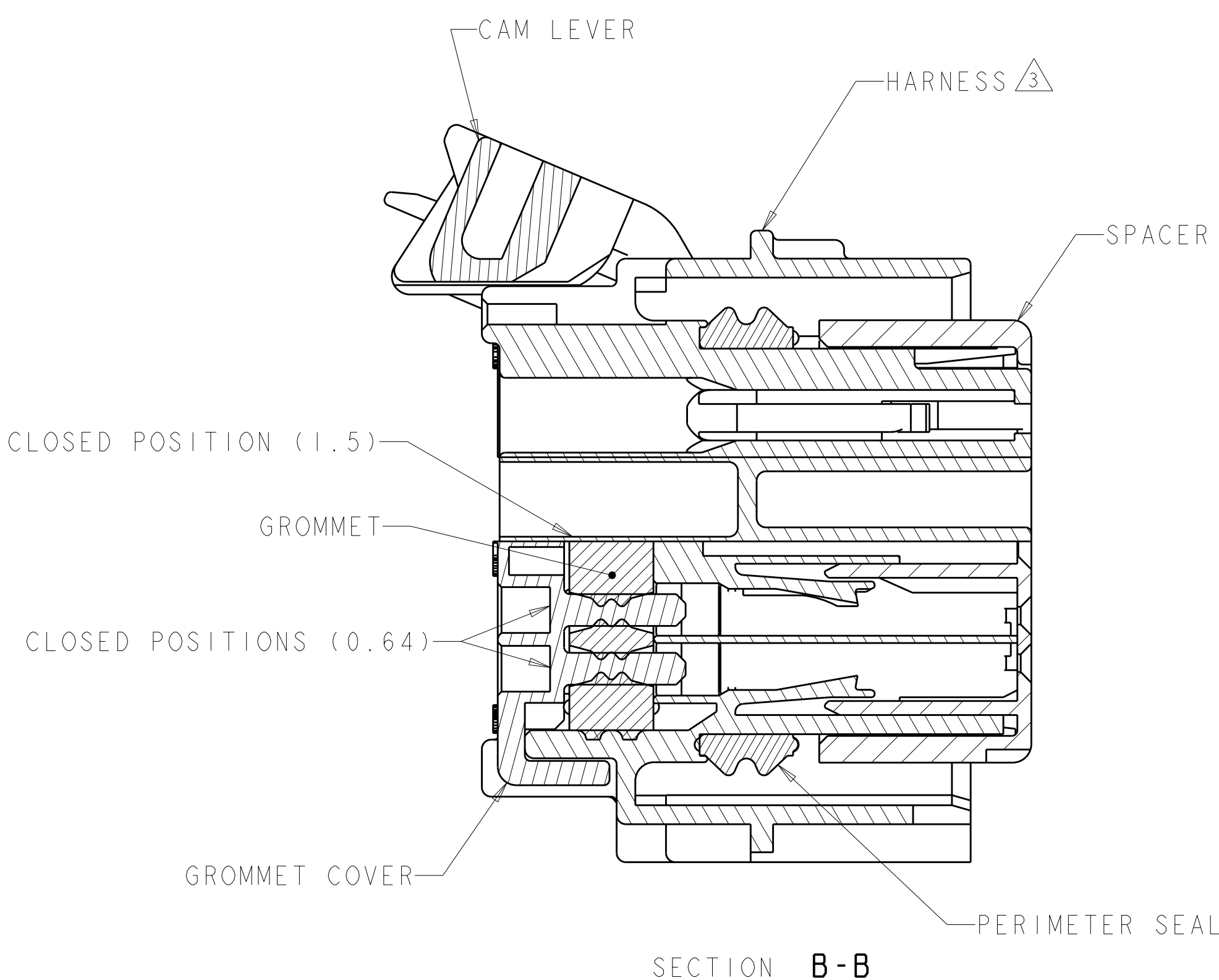
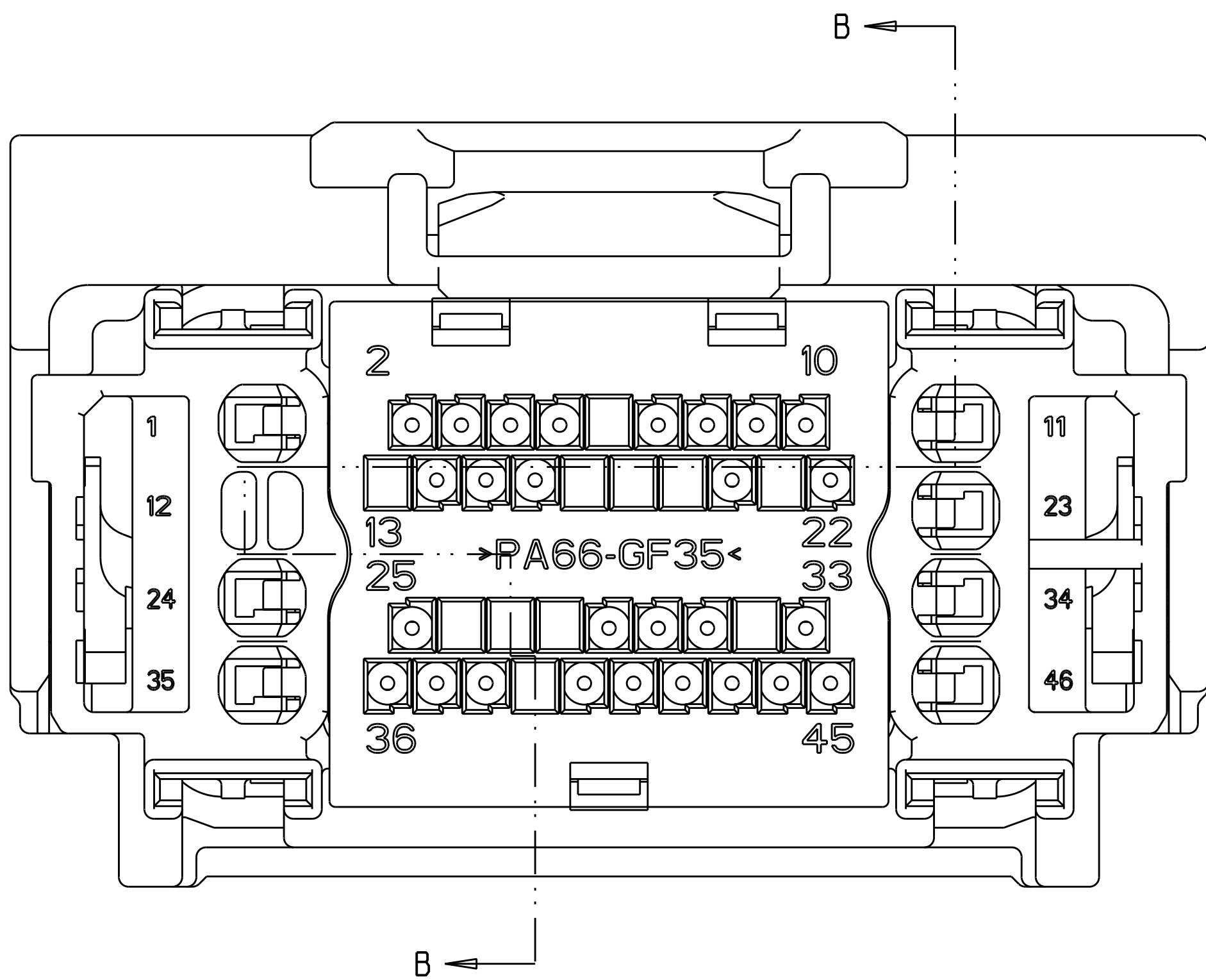
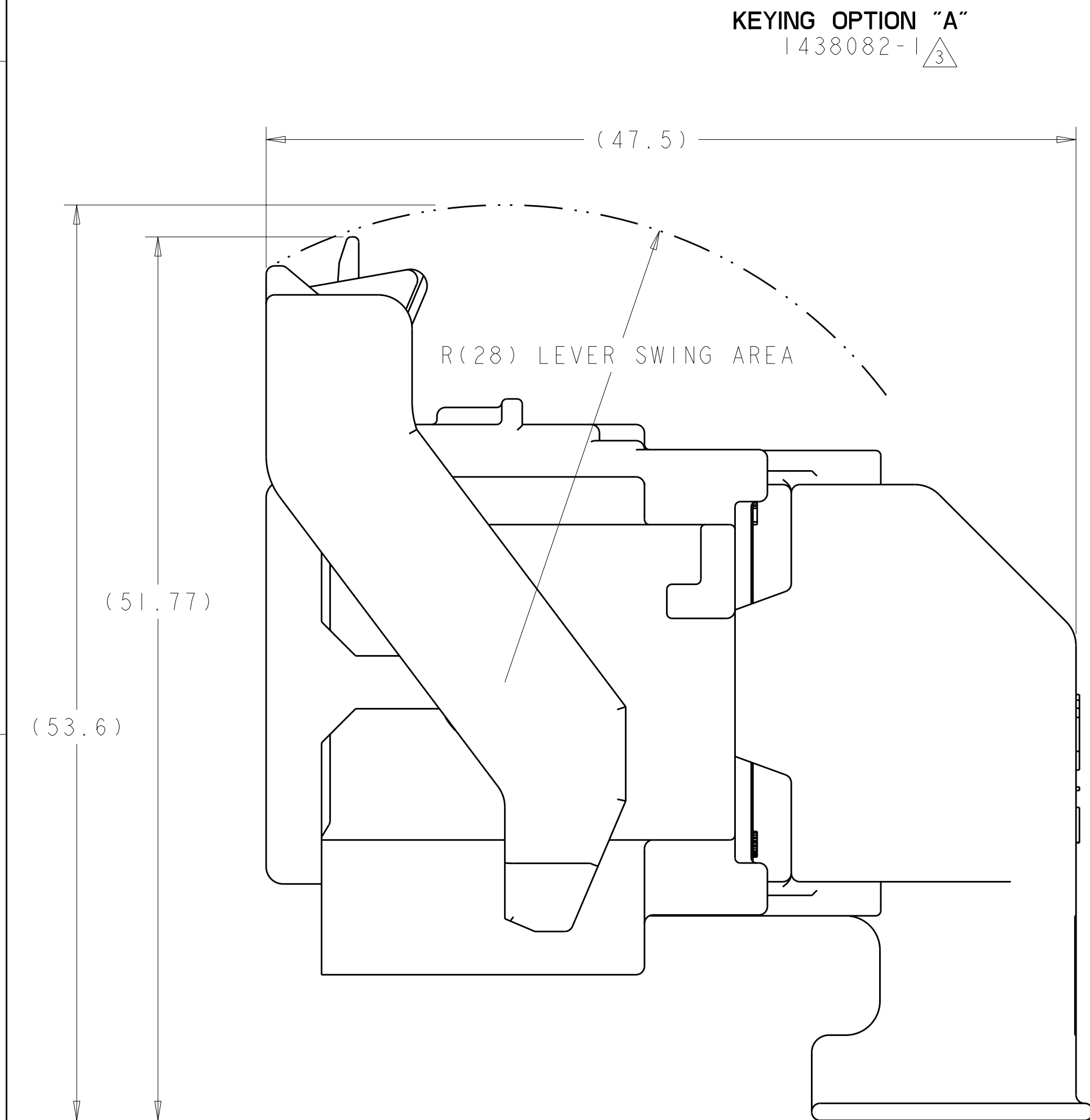


SCALE 1 : 1

KEYING OPTION "B"  
1438082-2  $\triangle_3$





△ MATERIAL:  
HARNESS - 35% GLASS FILLED PA66, BLACK  
ALT MAT'L: HARNESS - 30% GLASS FILLED sPS, BLACK  
SPACER - 40% GLASS FILLED PPS+PA66, RED  
ALT MAT'L: 30% GLASS FILLED sPS, RED  
ALT MAT'L: 35% GLASS FILLED PA66, RED  
COVER - 35% GLASS FILLED PA66, BLACK  
ALT MAT'L: COVER - 30% GLASS FILLED LCP, BLACK  
CAM LEVER - 35% GLASS FILLED NYLON, GRAY  
GROMMET - SILICONE, BROWN  
PERIMETER SEAL - SILICONE, GREEN

2. CAM LEVER AND SPACER ARE SHIPPED IN PRE-LATCH POSITION.

③ SEE PINOUT CHART ON SHEETS 2, 3 AND 4 FOR CLOSED CIRCUIT CONFIGURATIONS.

④ CAVITIES WITH A NUMERIC SYMBOL INDICATES CLOSED TERMINAL LOCATIONS.  
BLANK CAVITIES INDICATE OPEN TERMINAL HOLE LOCATIONS.

SHOWN WITH CAM LEVER AND SPACER  
IN LOADED POSITION WITH  
OPTIONAL WIRESHIELD

<small>1ST. DRAWING IS A CONTINUATION OF PREVIOUS DRAWING. ALL DIMENSIONS AND TOLERANCES SHOULD BE CONTACTED FOR THE LATEST REVISION.</small>		DWN <b>W. VESTAL</b> 01AUG2003		 <b>Tyco Electronics</b>		Tyco Electronics Harrisburg, PA 17105-3608	
DIMENSIONS: mm		TOLERANCES UNLESS OTHERWISE SPECIFIED: 0 PLOC ±.010 1 PLOC ±.010 2 PLOC ±.010 3 PLOC ±.010 4 PLOC ±.010 ANGLES ±°.		CHE <b>D. STRAUSSER</b> 01AUG2003		NAME 46 WAY PCM CONNECTOR HARNESS ASSEMBLY	
		APPRO <b>D. STRAUSSER</b> 01AUG2003		PRODUCT SPEC			
MATERIAL SEE TABLE		FINISH SEE TABLE		APPLICATION SPEC		SIZE CAGE CODE DRAWING NO A   00779 C=1438082	
		WEIGHT -		CUSTOMER DRAWING		RESTRICTED TO -	
				SCALE 4:1 SHEET 1 OF 5 REV 1			

LOC	DIST	REVISIONS					
FX	00	P	LTR	DESCRIPTION	DATE	DWN	APVD
			-	SEE SHEET 1	-	-	-

	45	43			39	37	36	35			31					24						18	17	16		14	13	12			9		7	6				2	1	9-1438082-7	2LIT-14A464-SD-051															
			42																		20	18			15	14			11	10		8	7			4	3	2	1	9-1438082-6	2LIT-14A464-SD-050															
			42																		20	18							11	10									1	9-1438082-5	2LIT-14A464-SD-049															
			42																		20	18							11	10									2	1	9-1438082-4	2LIT-14A464-SD-048														
								35						27																													9-1438082-3	2LIT-14A464-SD-047												
	45	43					36	35			32	31				24		21		19	18	17	16		14	12							7	6					1	9-1438082-1	2LIT-14A464-SD-046															
46											31																																	9-1438082-0	2LIT-14A464-SD-045											
											31					24								16									8						3	2					8-1438082-9	2LIT-14A464-SD-044										
														27																																8-1438082-8	2LIT-14A464-SD-043									
	45	44	43	42		40	38	37	36		33	31		29		24	22		20		18	17	16	15								9	8					3								8-1438082-7	2LIT-14A464-SD-042									
	45	44	43	42		40	38	37	36		33	31		29		24	22	21	20		19	18	17	16	15								9	8					2								8-1438082-6	2LIT-14A464-SD-041								
46												31																						9			6				3								8-1438082-5	2LIT-14A464-SD-040						
			43	42		39	37													20	19	18							11	10	9									2	1							8-1438082-4	2LIT-14A464-SD-039							
			43									31		29								18																											8-1438082-3	2LIT-14A464-SD-038						
	45	44	43	42		40	38	37	36		33	31		29		24	22	21	20		18	17	16	15									9	8						2								8-1438082-0	2LIT-14A464-SD-037							
	45		43								36	35				31							16		14	12									7	6					2	1							7-1438082-9	2LIT-14A464-SD-036						
	45		43								36	35				31							16		14	12										7	6					2	1							7-1438082-8	2LIT-14A464-SD-035					
			43	42		39	38	37				32			28							19	18	17	16					10	9																		7-1438082-5	2LIT-14A464-SD-034						
	45	44	43	42		40	38	37	36		33	31		29		24	22	21	20		18	17	16	15									9	8						2								7-1438082-4	2LIT-14A464-SD-033							
	45	44	43	42		40	38	37	36		33	31				24	22	21	20		18	17	16	15										9	8						2								7-1438082-3	2LIT-14A464-SD-032						
					40									29																					9															6-1438082-6	2LIT-14A464-SD-031					
																																																				6-1438082-3	2LIT-14A464-SD-030			
																																																				6-1438082-2	2LIT-14A464-SD-029			
																																																				6-1438082-1	2LIT-14A464-SD-028			
																																																				6-1438082-6	2LIT-14A464-SD-027			
																																																				6-1438082-5	2LIT-14A464-SD-026			
																																																				5-1438082-2	2LIT-14A464-SD-025			
																																																				5-1438082-6	2LIT-14A464-SD-027			
																																																				5-1438082-5	2LIT-14A464-SD-026			
																																																				5-1438082-2	2LIT-14A464-SD-025			
			43	42		39	37																			15	14			11	10	9	8	7					4	3	2	1									5-1438082-0	2LIT-14A464-SD-024				
			42																								15	14			11	10	9	8	7					4	3											4-1438082-9	2LIT-14A464-SD-023			
			43	42		39	37																							11	10	9																				4-1438082-8	2LIT-14A464-SD-022			
			42																												11	10	9																					4-1438082-7	2LIT-14A464-SD-021	
			43	42		39	37																								11	10	9																				4-1438082-2	2LIT-14A464-SD-020		
	45	43						36	35			31																																							4-1438082-0	2LIT-14A464-SD-019				
		43	42		39	37																																															3-1438082-8	2LIT-14A464-SD-018		
			42																																																				3-1438082-7	2LIT-14A464-SD-017
		43	42		39	37																																																	3-1438082-6	2LIT-14A464-SD-016
		42																																																						

LOC	DIST	REVISIONS					
FX	00	P	LTR	DESCRIPTION	DATE	DWN	APVD
		-		SEE SHEET 1	-	-	-

		44								35		32							22								12		9	7	6				1	6-1438735-7	2LIT-14A464-SD-086															
		44								35		32															12		9	7	6				1	6-1438735-3	2LIT-14A464-SD-085															
										35																											6-1438735-2	2LIT-14A464-SD-084														
			43	42		40	39		37					29					20	18			15	14			11	10	9	8	7			4	3	1	6-1438735-1	2LIT-14A464-SD-083														
45		43						38		36			31				25	24					18	17	16		14	12				7	6			2	1	5-1438735-0	2LIT-14A464-SD-082													
45		43						38		36			31				25	24							16		14	12				7	6			2	1	4-1438735-9	2LIT-14A464-SD-081													
45		43						38		36		32	31				25	24		21	19	18	17	16		14	12				7	6			1	4-1438735-8	2LIT-14A464-SD-080															
45		43					39	38	37	36			31				25	24					18	17	16		14	13	12			9	7	6			2	1	4-1438735-7	2LIT-14A464-SD-079												
				42																20	18					13	11	10								2	1	3-1438735-8	2LIT-14A464-SD-078													
				42																20	18					13	11	10								1	3-1438735-7	2LIT-14A464-SD-077														
45		43					39	38	37	36			31				25	24		21	20	19	18	17		14	13	12			9					2	1	3-1438735-6	2LIT-14A464-SD-076													
45		43						38		36			31				25	24		21	20	19	18	17		14	12									2	1	3-1438735-5	2LIT-14A464-SD-075													
			43	42		40	39		37					29						20	18			15	14			11	10	9	8	7			4	3	2	1	3-1438735-3	2LIT-14A464-SD-074												
45		43					39	38	37	36			31				25	24			20	19	18	17		14	13	12			9					2	1	3-1438735-2	2LIT-14A464-SD-073													
45		43						38		36			31				25	24		21	20	19	18	17	16		14	12				7				2	1	3-1438735-1	2LIT-14A464-SD-072													
45		43					39	38	37	36			31				25	24		21	20	19	18	17	16		14	13	12			9	7				2	1	3-1438735-0	2LIT-14A464-SD-071												
45		43						38		36			31				25	24		21	20	19			16		14	12				7					2	1	2-1438735-9	2LIT-14A464-SD-070												
45		43					39	38	37	36			31				25	24		21	20	19			16		14	13	12			9	7				2	1	2-1438735-8	2LIT-14A464-SD-069												
45		43						38		36			31				25	24			20	19	18	17		14	12										2	1	2-1438735-6	2LIT-14A464-SD-068												
											33																13												2-1438735-5	2LIT-14A464-SD-067												
45	44	43	42		40			38	37	36		33	31				24	22	21	20		18	17	16	15					9	8					2	2-1438735-4	2LIT-14A464-SD-066														
			43										31		29							18									8						2	2-1438735-1	2LIT-14A464-SD-065													
45		43						38		36	35			31			25	24		21					16		14	12				7	6				2	1	2-1438735-0	2LIT-14A464-SD-064												
45		43					39	38	37	36	35			31			25	24					18	17	16		14	13	12			9	7	6				2	1	1-1438735-9	2LIT-14A464-SD-063											
45		43						38		36	35		32	31			25	24		21	19	18	17	16		14	12				7	6					1	1-1438735-8	2LIT-14A464-SD-062													
45		43						38		36	35		31				25	24							16		14	12				7	6				2	1	1-1438735-7	2LIT-14A464-SD-061												
45		43						38		36	35		31				25	24		21	19			16		14	12				7	6				2	1	1-1438735-6	2LIT-14A464-SD-060													
45		43						38		36	35		31				25	24					18	17	16		14	12				7	6				2	1	1-1438735-5	2LIT-14A464-SD-059												
45		43					39	38	37	36	35		31				25	24		21	19	18	17	16		14	13	12			9	7	6				2	1	1-1438735-4	2LIT-14A464-SD-058												
45		43						38		36	35		31				25	24		21	19	18	17	16		14	12				7	6					2	1	1-1438735-3	2LIT-14A464-SD-057												
				42					37											20	18			15	14			11	10	9	8	7			4	3	2	1	1-1438735-2	2LIT-14A464-SD-056												
45		43								36	35		31				24		21	19			16		14	12					7	6					1	1-1438735-1	2LIT-14A464-SD-055													
										35						27																				3			1-1438735-0	2LIT-14A464-SD-054												
				43								31		29									18								9	8					2		1438735-9	2LIT-14A464-SD-053												
										35						27																	7						1438735-8	2LIT-14A464-SD-052												
46	45	44	43	42	41	40	39	38	37	36	35	34	33	32	31	30	29	28	27	26	25	24	23	22	21	20	19	18	17	16	15	14	13	12	11	10	9	8	7	6	5	4	3	2	1		PART NUMBER	FORD PART NUMBER				
TERMINAL HOLE POSITION																																																				
PIN-OUT CHART KEYING OPTION "A"																																																				

THIS DRAWING IS UNPUBLISHED. RELEASED FOR PUBLICATION 20		DWN R. VESTAL 01AUG2003		Tyco Electronics Harrisburg, PA 17105-3608	
CHK D. STRAUSSER 01AUG2003		NAME		46 WAY PCM CONNECTOR HARNESS ASSEMBLY	
APVD D. STRAUSSER 01AUG2003		PRODUCT SPEC		SIZE CAGE CODE DRAWING NO RESTRICTED TO	
APPLICATION SPEC		WEIGHT		A 00779 C=1438082 -	
CUSTOMER DRAWING		SCALE 4:1		SHEET 3 OF 5 REV 1	

DIMENSIONS:

mm

TOLERANCES UNLESS OTHERWISE SPECIFIED:

9 PLC ±.3

1 PLC ±0.10

5 PLC ±

4 PLC ±

ANGLES ±°

FINISH -

MATERIAL -

-





# Mouser Electronics

Authorized Distributor

Click to View Pricing, Inventory, Delivery & Lifecycle Information:

[TE Connectivity:](#)

[3-1438082-2](#)