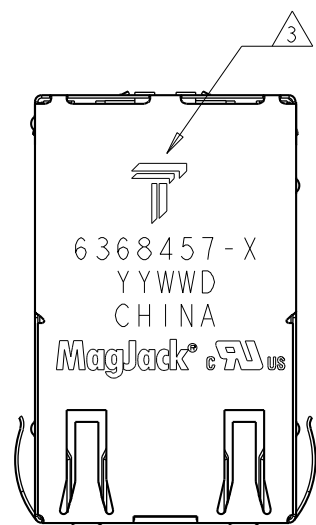


THIS DRAWING AND THE SUBJECT MATTER SHOWN THEREON ARE CONFIDENTIAL AND THE PROPERTY OF BEL/STEWART/TRP CONNECTOR AND SHALL NOT BE REPRODUCED, COPIED, OR USED IN ANY MANNER WITHOUT THE WRITTEN CONSENT OF TRP CONNECTOR.

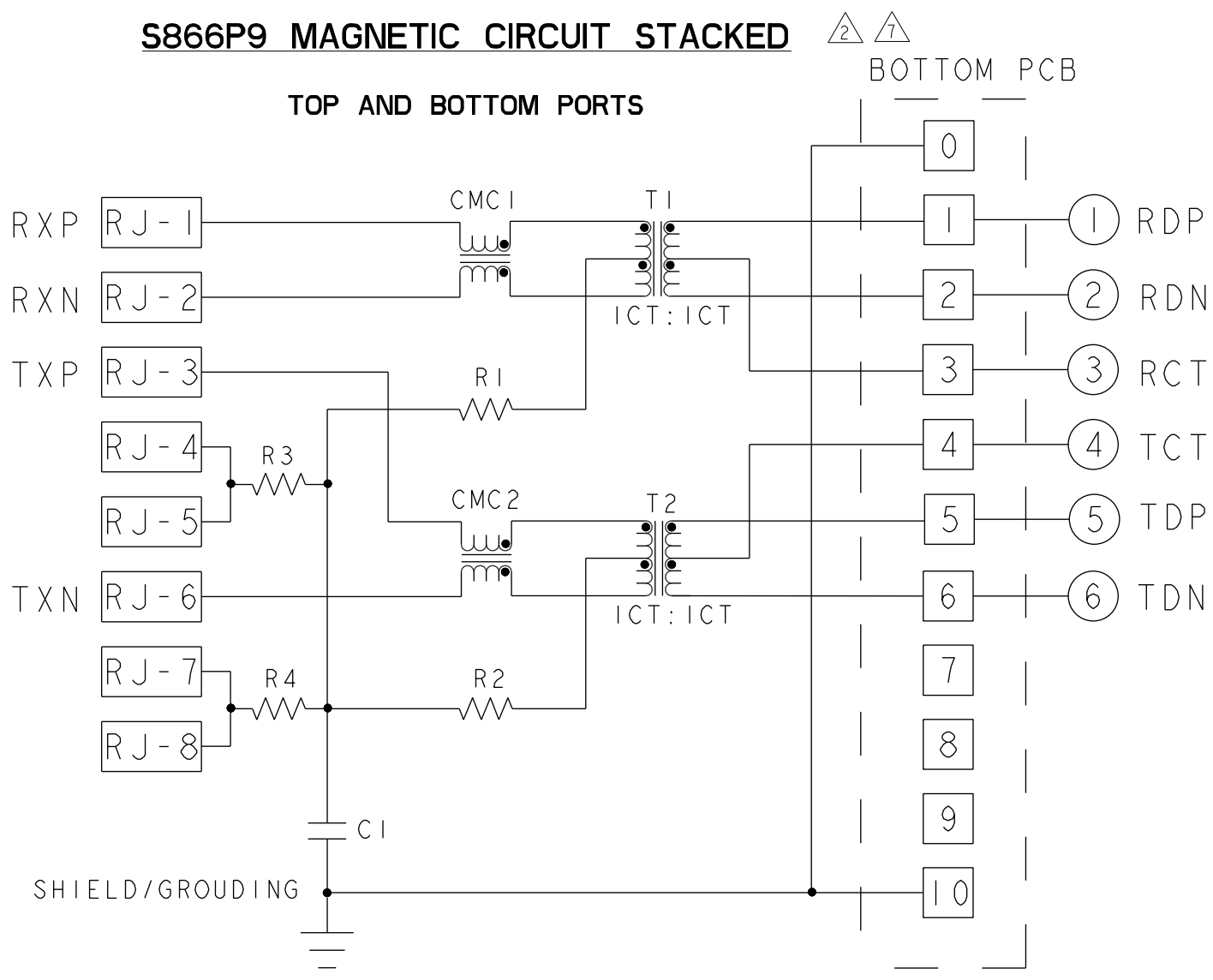
PRODUCT MAY BE PROTECTED BY ONE OR MORE OF THE FOLLOWING US PATENTS:  
5736910 5939955 6425781 6428361 6554638 6840817 7123117  
7429195 7717749 7808751 6217391 6149050 7924130

REVISIONS				
P	LTR	DESCRIPTION	DATE	OWN APVD
F		EC-1411035 COMPANY LOGO CHANGE	19JAN2015	RL TY

S866P9 MAGNETIC CIRCUIT STACKED



VIEW R  
SCALE 3:1



R1 - R4 = 75 Ohms, 1/16W, 5% RESISTORS  
C1 = 1000pF, 2KV DECOUPLING CAP

1. MATERIALS:  
PLASTIC HOUSING: BLACK, THERMOPLASTIC FLAMMABILITY RATING UL 94V-0  
SHIELD: BRASS, PLATED WITH 0.76  $\mu$ m SEMI-BRIGHT NICKEL, POST DIPPED WITH 2.54  $\mu$ m MIN SAC SOLDER ON SOLDER TAILS  
CONTACTS: PHOSPHOR BRONZE, 1.27  $\mu$ m MIN OVERALL NICKEL UNDER PLATE WITH SELECT 1.27  $\mu$ m MIN GOLD AT MATING INTERFACE AND 2.54  $\mu$ m MIN MATTE TIN ON SOLDER TAILS.  
LED: DIFFUSED EPOXY LENS, CARBON STEEL LEAD FRAME  
LEADS PREPLATED WITH 2.03  $\mu$ m MIN SILVER OVER 1.02  $\mu$ m MIN NICKEL UNDERPLATE OVER 1.02  $\mu$ m MIN COPPER UNDERPLATE. POST-PLATED WITH 2.54  $\mu$ m MIN MATTE TIN AND/OR SAC SOLDER DIP OR PURE TIN SOLDER DIP

2. MAGNETICS  
APPLICATION: 10/100 BASE-T  
IMPEDANCE: 100 OHMS  
TURNS RATIO (CHIP:CABLE): TX = 1:1, RX = 1:1  
OPEN CIRCUIT INDUCTANCE (OCL): 350 $\mu$ H MIN @100kHz, 0.1VRMS, 8mADC BIAS FROM 0°C TO 70°C, TX AND RX  
PERFORMANCE @ 25°C:  
INSERTION LOSS (IL): 1.1dB MAX FROM 0.5MHz TO 100MHz  
RETURN LOSS (RL): 18dB MIN FROM 0.5MHz TO 30MHz  
18-20LOG(f/30)dB MIN FROM 30.1MHz TO 60MHz  
12dB MIN FROM 60.1MHz TO 80MHz  
CROSSTALK ATTENUATION: 35dB MIN FROM 0.5MHz TO 40MHz  
33-20LOG(f/50)dB MIN FROM 40.1MHz TO 100MHz  
COMMON MODE REJECTION RATIO (CMRR): 30dB MIN FROM 0.5MHz TO 100MHz  
ISOLATION VOLTAGE: COMPLIES WITH IEEE802.3 2002, PARA 23.5.1.1, ITEM B.

3. TRP LOGO, PART NUMBER, DATE CODE, COUNTRY OF ORIGIN, AGENCY APPROVAL MARKING LOGO LOCATED IN THE APPROXIMATE AREA SHOWN. DATE CODE YY IS YEAR,WW IS WORK WEEK,D IS DAY OF WEEK,WITH SUNDAY=1

4. OPERATING TEMPERATURE: FROM 0° C TO + 70° C.

5. RJ45 CAVITY COMFORMS TO FCC RULES AND REGULATION PART 68 SUBPART F.

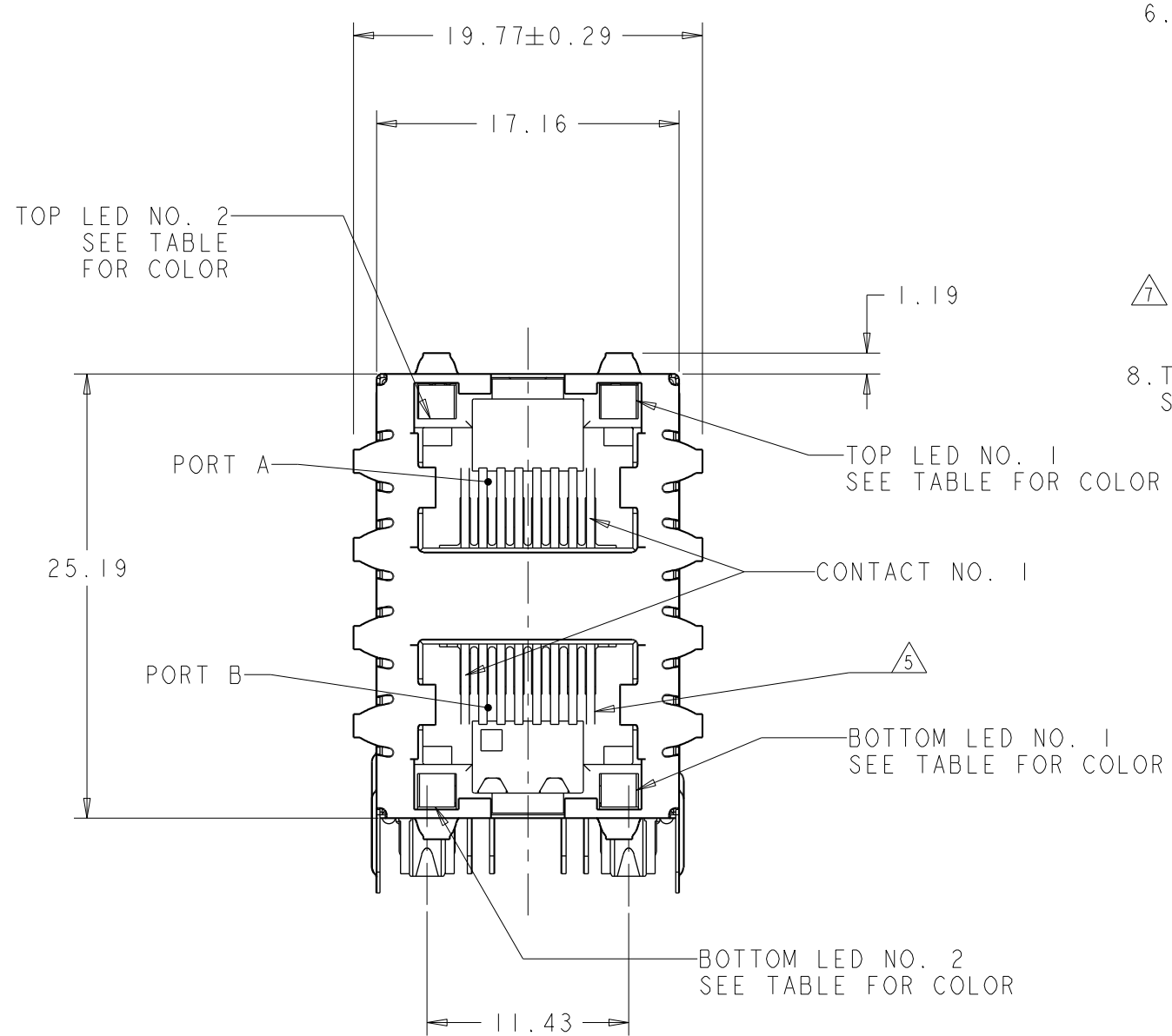
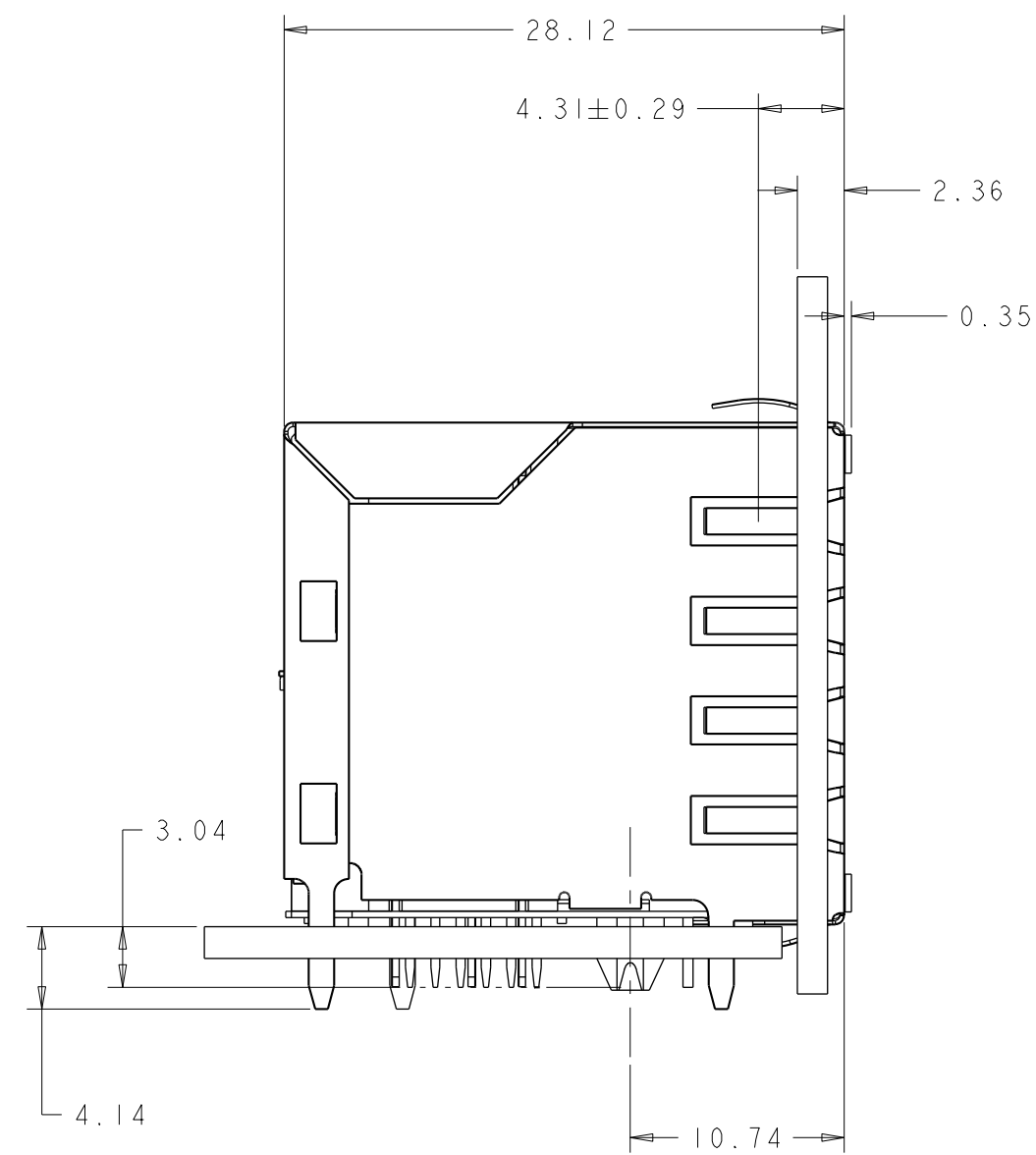
6. LED'S COMPLIANT WITH IEC60825-1 SAFETY OF LASER PRODUCTS WHEN OPERATED AT CURRENT OF 20 mA MAX.  
LED IS DRIVEN WITH CONSTANT CURRENT AT APPROX 20mA.  
LED COLOR:

DOMINANT WAVELENGTH ( $\lambda$ D): GREEN 568 nm TYP @IF=20mA  
FORWARD VOLTAGE (VF): GREEN 2.2V TYP @ IF=20mA



DOMINANT WAVELENGTH ( $\lambda$ D): YELLOW 588 nm TYP @IF=20mA  
FORWARD VOLTAGE (VF): YELLOW 2.1V TYP @ IF=20mA

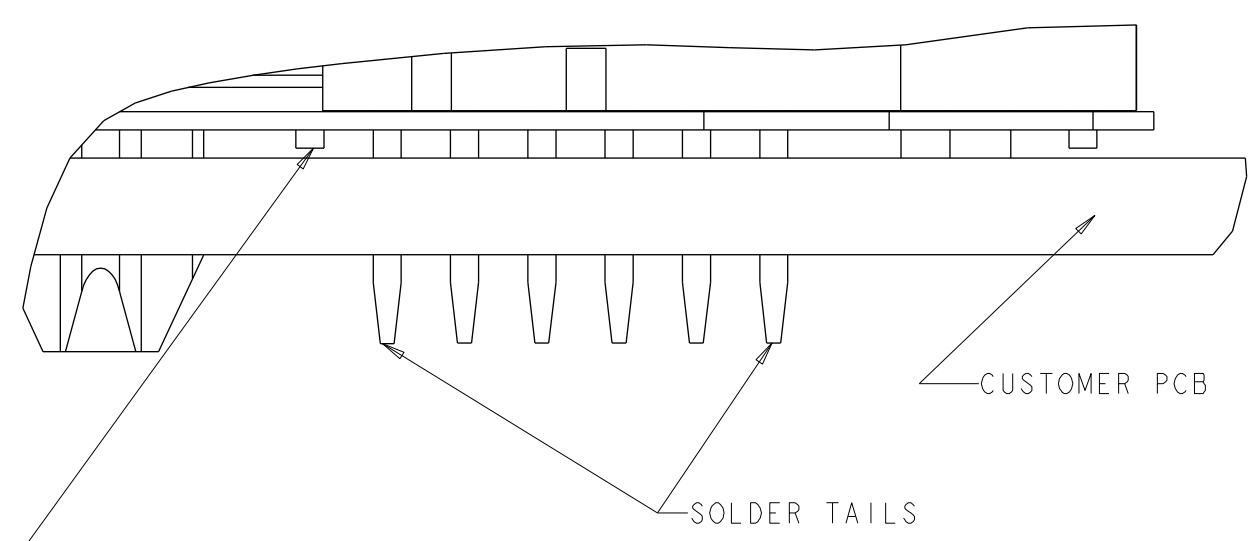
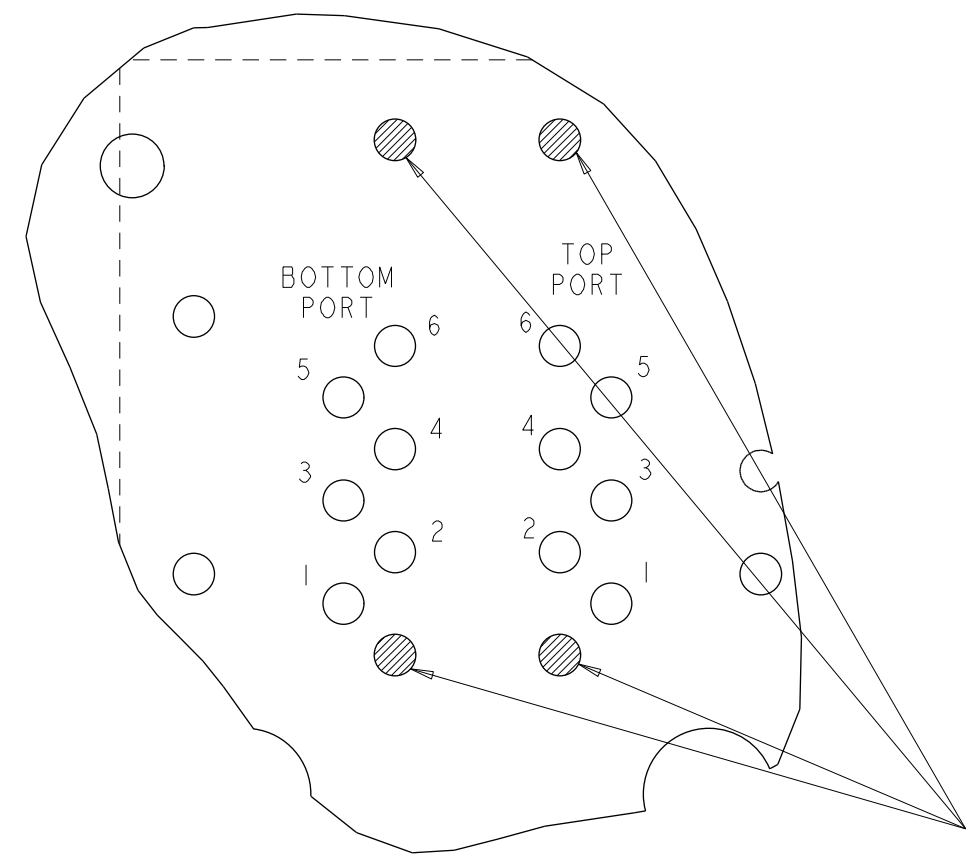
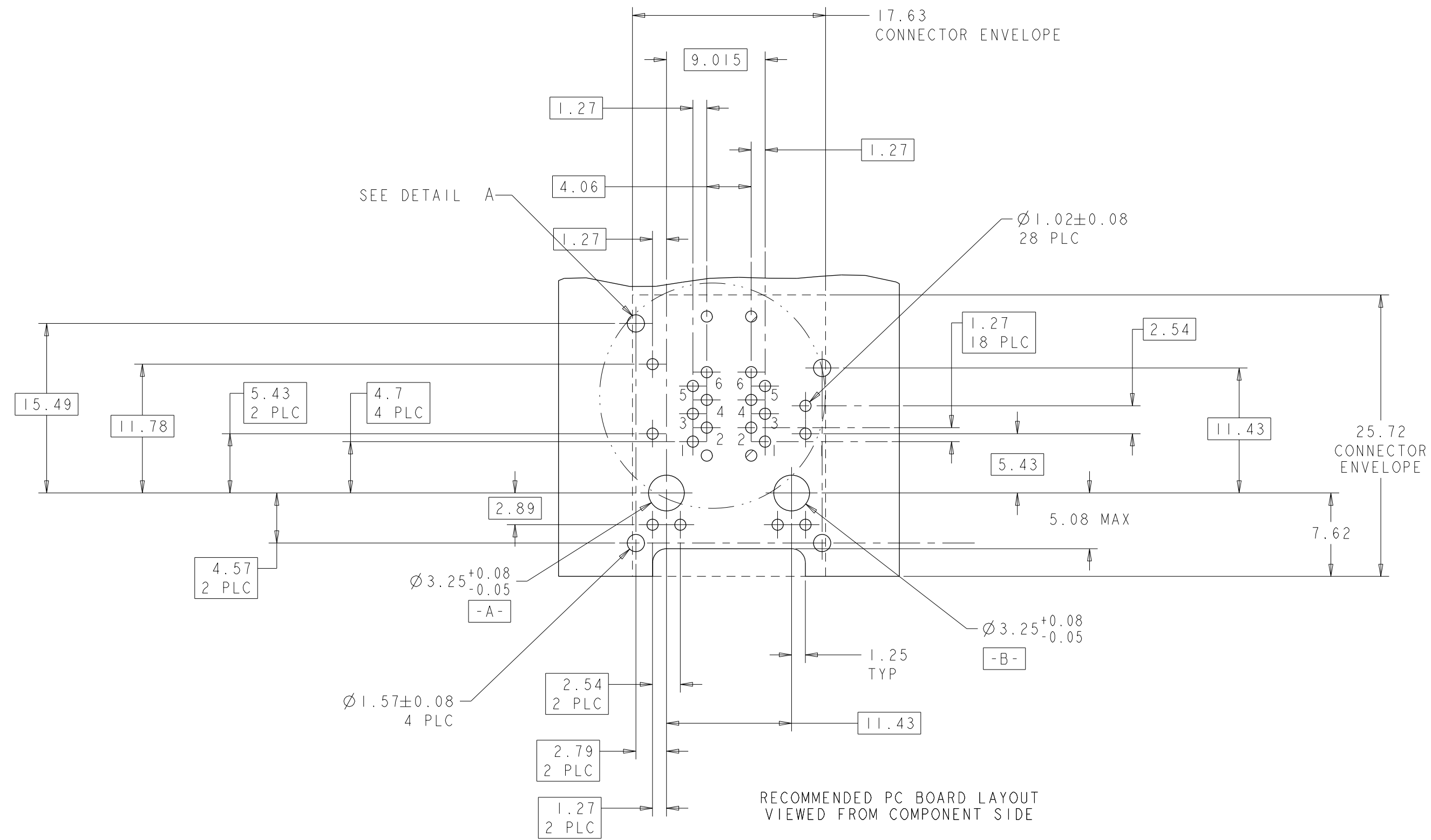
7. INDICATED CONNECTIONS ARE FOR HUB CONFIGURATION. THE MAGNETICS ARE SYMMETRICAL AND SUPPORT AUTO-MDI/MDIX.

8. THESE PARTS ARE RECOMMENDED FOR WAVE SOLDERING PROCESS, PEAK SOLDERING TEMPERATURE IS 260°C MAX, 10 SECONDS MAX.

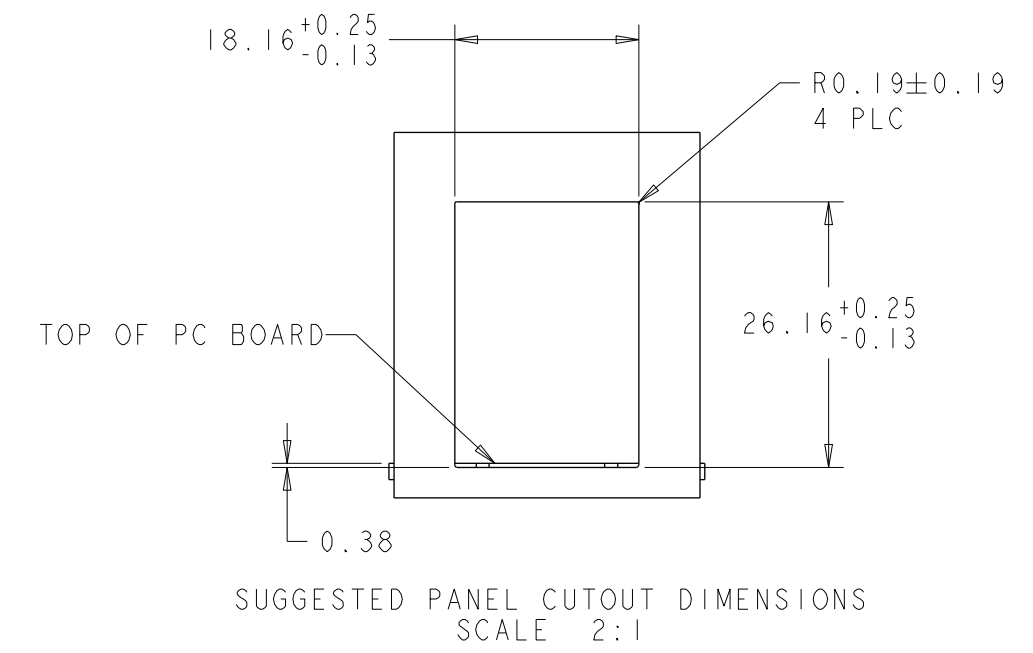



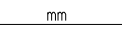
OBSOLETE	GRN/YEL	GRN/YEL	GRN/YEL	GRN/YEL	6368457-4
	GREEN	YELLOW	GREEN	YELLOW	6368457-3
	YELLOW	GREEN	GREEN	YELLOW	6368457-2
	GREEN	GREEN	GREEN	GREEN	6368457-1
	BOTTOM LED NO. 2	BOTTOM LED NO. 1	TOP LED NO. 2	TOP LED NO. 1	PART NO.

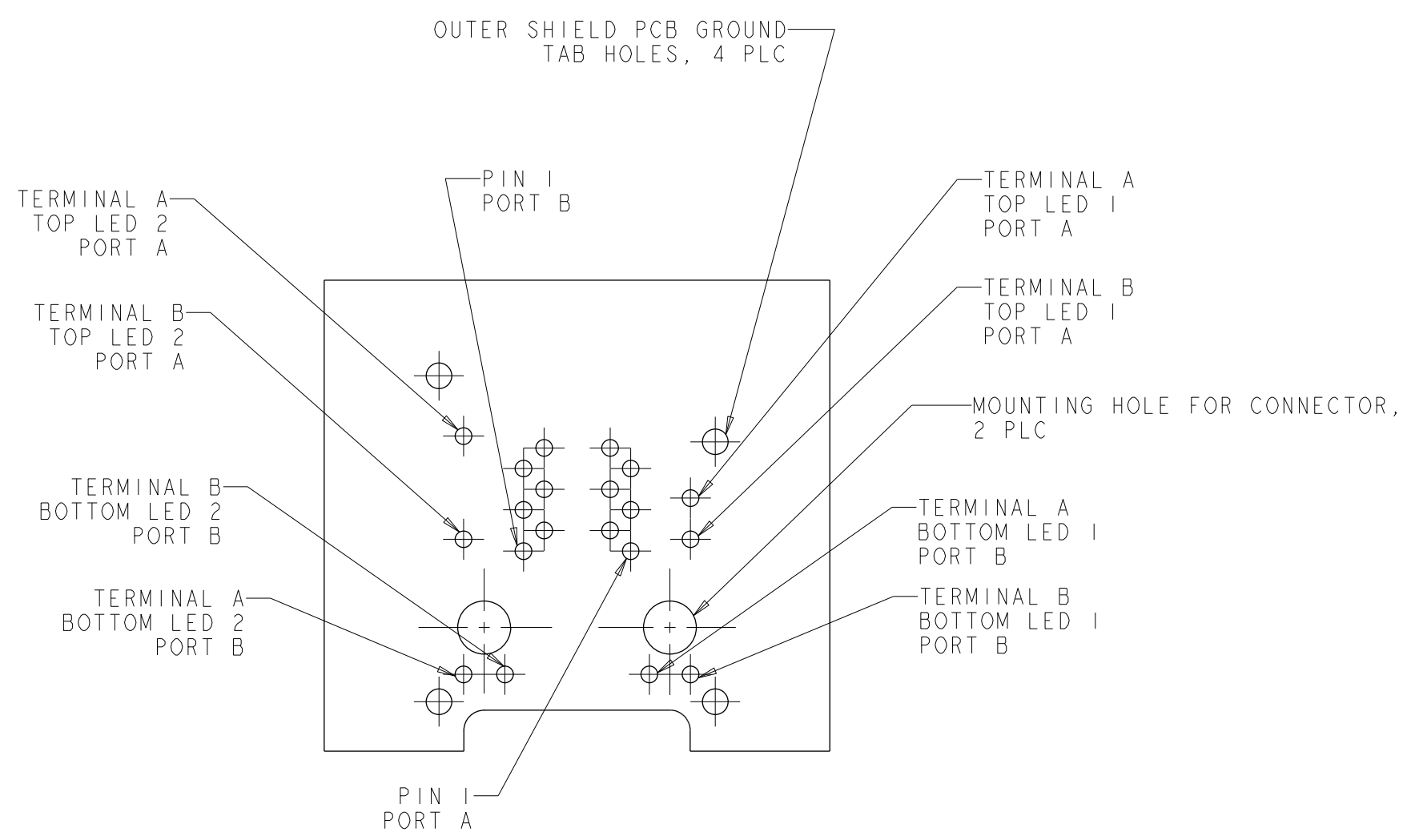
THIS DRAWING IS A CONTROLLED DOCUMENT.		OWN C GILLETTE 30DEC2005		 <b>trp</b> CONNECTOR a bel group DONGGUAN CHINA
DIMENSIONS: mm		CHK P D'AMATO 30DEC2005		
		APVD S FLICKINGER 30DEC2005		
		MODEL NAME		
		MAGJACK		DESC 2X1, S866P9 10/100 CIRCUIT, WITH LED
PRODUCT SPEC 108-2100		STACK NON-PoE		SIZE A1
				CAGE CODE C=6368457
				DRAWING NO - RESTRICTED TO -
				SCALE NTS
				SHEET 1
				OF 3
				REV F



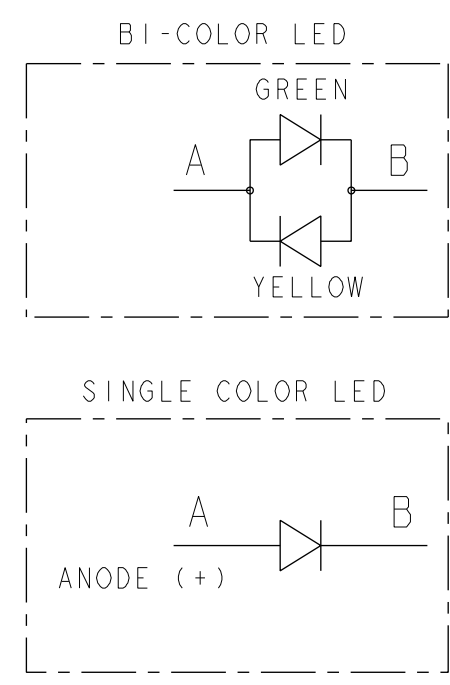
PIN #0 & PIN #10 ON MOD JACK ARE STUB PINS WITH LENGTH SIMILAR TO PCB STANDOFF HEIGHT. PRECAUTIONS SHOULD BE TAKEN IN PCB DESIGN TO GUARD AGAINST SHORTING TRACES TO STUB PINS.


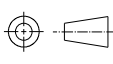


THIS DRAWING IS A CONTROLLED DOCUMENT.		DRN C GILLETTE	30DEC2005	 <b>trp</b> CONNECTOR a bel group	DONGGUAN CHINA
DIMENSIONS: mm		CHK P D'AMATO	30DEC2005		
		APPROV S FLICKINGER	30DEC2005		
		MODEL NAME	DESC		
		MAGJACK		2X1, S866P9 10/100 CIRCUIT, WITH LED	
PRODUCT SPEC 108-2100		STACK NON-POE		SIZE A1	RESTRICTED TO -
		CUSTOMER DRAWING		SCALE NTS	SHEET 2 OF 3 REV F



LED HOLE DESIGNATIONS VIEWED FROM COMPONENT SIDE  
SCALE 4:1



THIS DRAWING IS A CONTROLLED DOCUMENT.		DRN C GILLETTE	30DEC2005	 <b>trp</b> CONNECTOR <small>a bel group</small>		DONGGUAN CHINA	
DIMENSIONS:		CHK P D'AMATO	30DEC2005				
mm		APVIO S FLICKINGER	30DEC2005				
		TOLERANCES UNLESS OTHERWISE SPECIFIED:		MODEL NAME		DESC	
		0 PLC ±0.25		MAGJACK		2X1, S866P9 10/100	
		1 PLC ±0.25		STACK NON-PoE		CIRCUIT, WITH LED	
		2 PLC ±0.25		SIZE		CAGE CODE	
		3 PLC ±		DRAWING NO		RESTRICTED TO	
		4 PLC ±		A1		-	
		ANGLES ±		C=6368457		-	
PRODUCT SPEC		APPLICATION SPEC		CUSTOMER DRAWING		SCALE	
108-2100		-				NTS	
						SHEET 3 OF 3	
						REV F	

# Mouser Electronics

Authorized Distributor

Click to View Pricing, Inventory, Delivery & Lifecycle Information:

Bel:

6368457-3