

SAFETY ORGANIZATION(S):

THIS FILTER HAS BEEN FORMALLY RECOGNIZED, CERTIFIED OR APPROVED BY THE LISTED AGENCY. THEREFORE, ALL TEST/REQUIREMENTS SPECIFIED IN THE LATEST REVISION OF THE FOLLOWING AGENCY STANDARDS HAVE BEEN MET:

UL RECOGNIZED
UL 1283
CSA CERTIFIED
CSA 22.2, NO. 0, 0.4, 8
VDE APPROVED
VDE 565-3

OPERATING SPECIFICATIONS:

LINE VOLTAGE/CURRENT:
10 AMP., 120/250 VAC
8 AMP/40°C, 250 VAC
50-60Hz

LINE FREQUENCY:
MAX. LEAKAGE CURRENT, EACH
LINE TO GROUND
1.25 mA @ 120V 60Hz
2.10 mA @ 250V 50Hz

OPERATING AMBIENT TEMP. RANGE:
-10°C TO +40°C @ RATED CURRENT, I_r

IN AN AMBIENT, T_a, HIGHER THAN 40°C, THE MAXIMUM OPERATING CURRENT, I_o, IS AS FOLLOWS:

$$I_o = I_r \sqrt{\frac{85 - T_a}{45}}$$

RELIABILITY SPECIFICATIONS:

STORAGE TEMPERATURE:
-25°C TO +85°C

HUMIDITY:
21 DAYS @ 40°C 95% RH

CURRENT OVERLOAD TEST:
6 TIMES RATED CURRENT FOR 8 SECONDS

TEST SPECIFICATIONS:

INDUCTANCE:
L 7.178 mH NOMINAL
N 7.142 mH NOMINAL

CAPACITANCE: (MEASURED @ 1 KHz, 0.25 VAC MAX., 25°C ±1°C)

LINE TO GROUND:
.0155µF ±20%

LINE TO LINE:
.74µF ±20%

DISCHARGE RESISTOR:
330KΩ

LINE/GROUND AND LINE/LINE
INSULATION RESISTANCE
6000 MΩ (MIN) AT 100 VDC
20°C AND 50% RH
(W/O DISCHARGE RESISTOR)

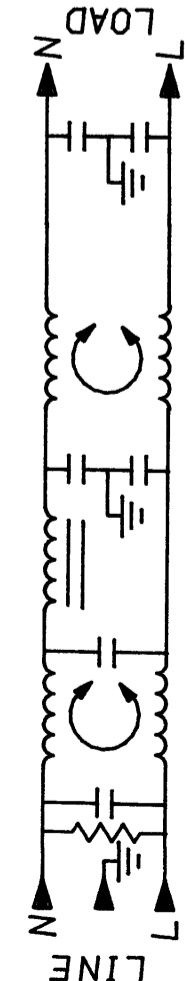
RECOMMENDED RECEIVING INSPECTION HIPOT:

LINES TO GROUND:
2250 VDC FOR 1 MINUTE

LINE TO LINE:
1450 VDC FOR 1 MINUTE

FILTER APPROVAL:


THE BEST WAY TO SELECT AND QUALIFY A FILTER IS FOR YOUR ENGINEERING TO TEST THE UNIT IN YOUR EQUIPMENT.



50Ω - 50Ω (MINIMUM) INSERTION LOSS										
FREQUENCY MHz	.01	.05	.1	.15	.5	1	5	10	20	30
COMMON dB	5	10	24	37	50	72	70	70	60	60
DIFF. dB	5	5	7	26	39	65	65	70	70	70

This document is proprietary to CORCOM INC. and is not to be reproduced nor used for manufacturing purposes except on CORCOM's order or prior written consent.

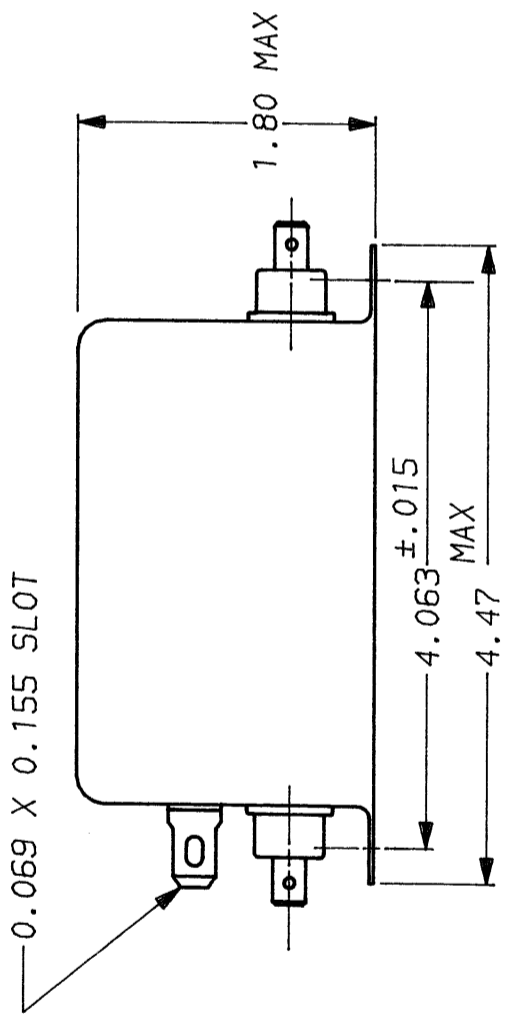
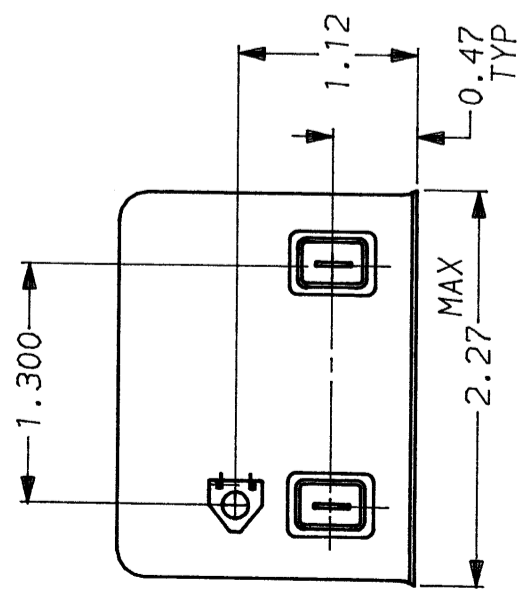
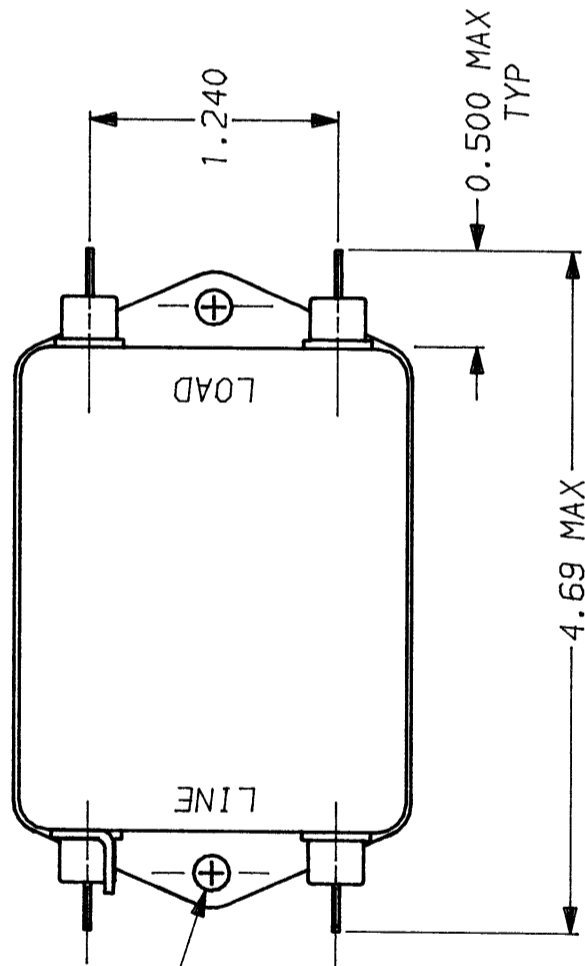
TOLERANCE EXCEPT AS NOTED
DECIMAL: .XXX .XX .X ANGLES
ENGLISH: ±.025
METRIC: ±



CORCOM
LIBERTYVILLE, IL 60048

POWER LINE FILTER

SCALE	DATE	DRG. NO.	REV.
NTS	8-16-90	10VG1.01	01
DRW. BY	ORIGINATOR		
CFW	CFW		



0.187±.010DIA
(2)

Mouser Electronics

Authorized Distributor

Click to View Pricing, Inventory, Delivery & Lifecycle Information:

[TE Connectivity:](#)

[10VG1](#) [6609051-2](#)