

Sensor/actuator cable - SAC-M12MS/A-L-S/0,2PUR/A-L-S - 1500392

Please be informed that the data shown in this PDF Document is generated from our Online Catalog. Please find the complete data in the user's documentation. Our General Terms of Use for Downloads are valid (<http://phoenixcontact.com/download>)




Sensor/actuator cable, 3-position, PUR/PVC, black RAL 9005, Plug straight M12, with 1 LED, A-coded, connected with Z diode, on Valve connector A, with 1 LED, connected with Z diode and Valve connector A, with 1 LED, cable length: 0.2 m

As illustrated but with straight male connector

RoHS

Key Commercial Data

Packing unit	5 pc
Minimum order quantity	50 pc
GTIN	 4 017918 590079
GTIN	4017918590079

Technical data

Dimensions

Length of cable	0.2 m
-----------------	-------

Ambient conditions

Degree of protection	IP67
----------------------	------

General

Rated current at 40°C	4 A
Rated voltage	24 V
Number of positions	3
Insulation resistance	≥ 100 MΩ
Status display	1 LED
Protective circuit/component	Z diode
Overvoltage category	II
Degree of pollution	3
Insertion/withdrawal cycles	≥ 100

Material

Sensor/actuator cable - SAC-M12MS/A-L-S/0,2PUR/A-L-S - 1500392

Technical data

Material

Flammability rating according to UL 94	HB
Valve plug contact material	CuSn
Valve plug contact surface material	Ag
Valve plug contact insert material	PBT
Material housing valve plug	PBT
Sealing material	TPU (Flat gasket valve plug)

Cable

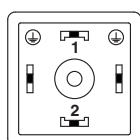
Cable type	PUR/PVC black
Conductor cross section	0.75 mm ²
Conductor structure signal line	24x 0.20 mm
Wire colors	black 1, black 2, green/yellow
External sheath, color	black RAL 9005
External cable diameter	5.90 mm
Outer sheath, material	PUR
Material, inner sheath	PVC

Standards and Regulations

Flammability rating according to UL 94	HB
--	----

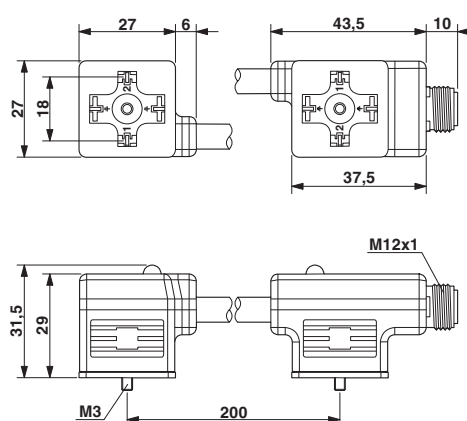
Drawings

Schematic diagram



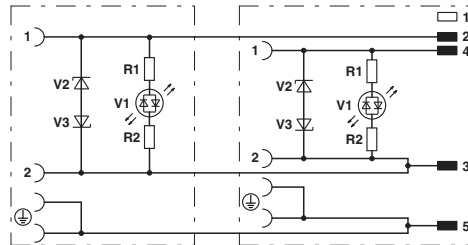
Valve connector pin assignment, type A

Dimensional drawing



Sensor/actuator cable - SAC-M12MS/A-L-S/0,2PUR/A-L-S - 1500392

Circuit diagram



Wiring of double valve connector cable

Phoenix Contact 2018 © - all rights reserved
<http://www.phoenixcontact.com>

PHOENIX CONTACT GmbH & Co. KG
Flachsmarktstr. 8
32825 Blomberg
Germany
Tel. +49 5235 300
Fax +49 5235 3 41200
<http://www.phoenixcontact.com>

Mouser Electronics

Authorized Distributor

Click to View Pricing, Inventory, Delivery & Lifecycle Information:

Phoenix Contact:

1500392