

ZONE		REVISIONS		DATE	APPROVED
1	REVISED PER ECR# T-6235			2/21/2001	M. HIGGY
2	REVISED PER DCR# T-28702				

SOCKET CONTACT AND TOOLING INFORMATION

TABLE I			
CONTACT TYPE	MILITARY PART NO.	WIRE STRIP LENGTH	TERMINATION TOOL
SHIELDED CONTACT FOR COAX CABLE D-602-0095 OR D-602-0107		SEE DRAWING D-602-0095 OR D-602-0107	SEE DRAWING D-602-0095 OR D-602-0107
CONTACT FOR TWISTED PAIR D-602-0105		SEE DRAWING D-602-0105	SEE DRAWING D-602-0105
POWER CONTACT SIZE 12	M39029/5-12-12	1/4" TO 5/16"	M22520/1-01 POSITIONER M22520/1-02

TABLE II
KEYING CODE CHART

PART NUMBER	XX	POSITION OF KEYS
MTC XIP-COAX OIS-01	AA	
	AB	
	AC	
	AD	
	BA	
	BB	
	BC	
	BD	
	CA	
	CB	
	CC	
	CD	
	DA	
	DB	
	DC	
	DD	

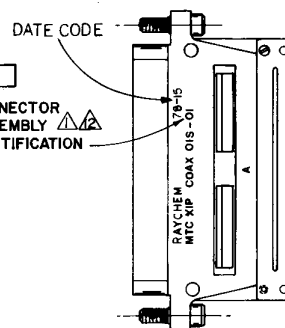
NOTES:

- KEYING CODE DOES NOT FORM A PART OF RAYCHEM PART NUMBER SYSTEM AND SHOULD BE OMITTED WHEN ORDERING. KEYING PINS SUPPLIED UN-INSTALLED. SEE TABLE II FOR KEYING POSITIONS.
- COMPLETE CONNECTORS AND ACCESSORIES ARE INDIVIDUALLY BAGGED AND LABELED.
- REAR GROMMET INSERT WILL SEAL ON SMOOTH INSULATION FROM .097" TO .158" O.D.
- CONNECTOR DESIGNED FOR USE WITH POWER AND SHIELDED CONTACTS PER TABLE I.
- INSERTS ARE PERMANENTLY INSTALLED, CONTACTS MAY BE INSERTED AND REMOVED USING TOOL PER NOTE 8.
- ALL UNUSED CAVITIES TO BE SEALED USING SEALING PLUG NUMBER M83723-28-12.
- ALL CONTACTS SIZE 12 ARE INSERTED AND REMOVED USING TOOL NUMBER M83723-31-12.

- CONNECTOR SUPPLIED WITH A SHIPPING DUST CAP OVER ENGAGING END.
- CONNECTOR PLUG PART NO. MTCXIP-COAX OIS-01-AA. AA = KEYING CODE.
- MATES WITH RECEPTACLE CONNECTOR NO. MTCXIR-COAX OIP-01.
- CONNECTOR MATING REQUIREMENTS: 9 in. lbs. TORQUE FOR CAPTIVE LOCKING SCREWS.
- PART NUMBER VARIABLE:

MTC XIP-COAX OIS-01
 B = NICKEL PLATE PER MIL-C-26074
 C = CADMIUM PLATE PER QQ-P-416 OVER NICKEL UNDERPLATE

13. DIMENSIONS WITHOUT TOLERANCES ARE TO BE CONSIDERED FOR REFERENCE ONLY.

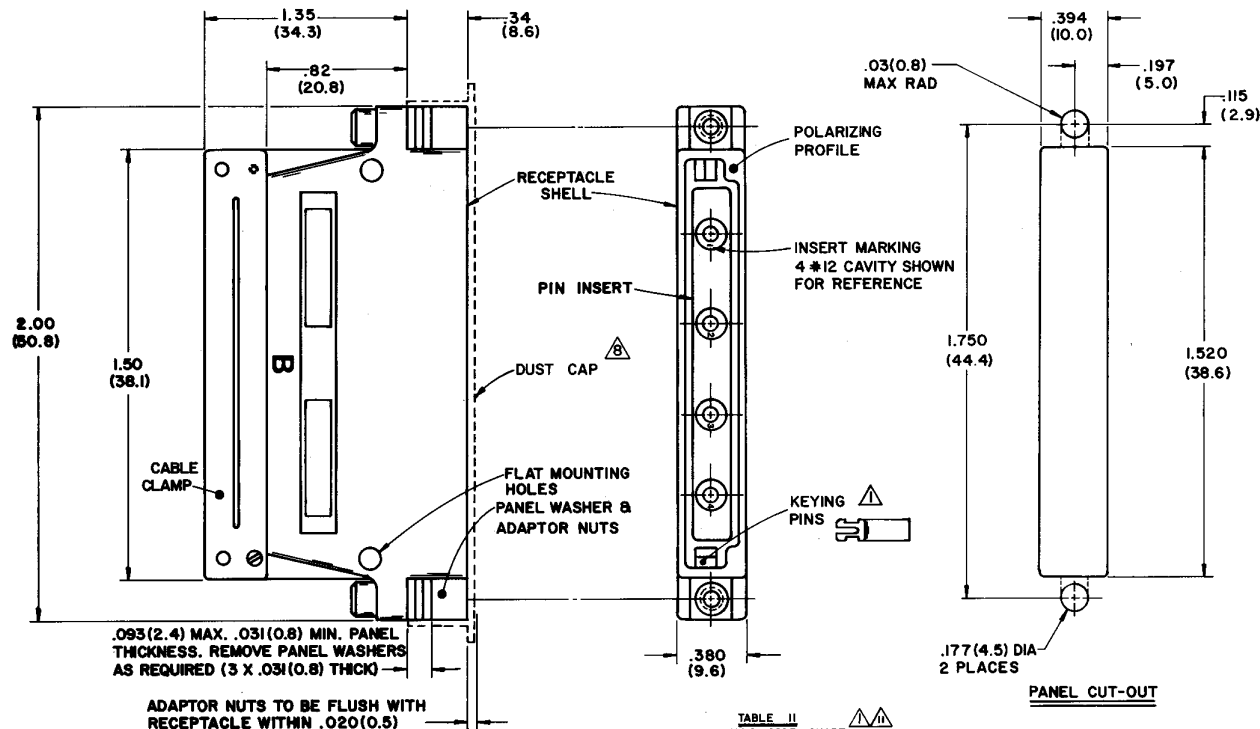


VIEW SHOWING IDENTIFICATION

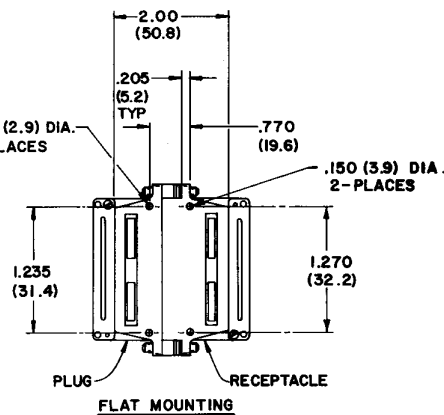
If this document is printed it becomes uncontrolled.
 Check with the web for latest revision.

SPECIFICATION CONTROL DRAWING

ITEM	REV	PART NUMBER	ENG. OR SPEC	PARTS LIST		DESCRIPTION	
UNLESS OTHERWISE SPECIFIED DIMENSIONS ARE IN INCHES AND TOLERANCES ARE:				DRAWN	CRN	740-17	WIRE AND HARNESSING PRODUCTS
				CHECKED	6/1/01	2-24-01	TYCO ELECTRONICS/RAYCHEM 807 CONSTITUTION DRIVE WILCO PARK, CALIFORNIA 94025
				APPROVED	6/1/01	6-7-01	
				APPROVED	6/1/01	6-9-01	
				CAD FILE	T28702a.b.c.d.tif		
				PROJECT	6441-6037		
				SIZE	D	NO 06090	D-652-0004
				SCALE			
				WEIGHT			
				SHEET			J
				OF	4		



REVISIONS				
ZONE	LTR	DESCRIPTION	DATE	APPROVED
—	—	SEE SHEET 1		



PIN CONTACT AND TOOLING INFORMATION

TABLE I

CONTACT TYPE	MILITARY PART NO.	WIRE STRIP LENGTH	TERMINATION TOOL
SHIELDED CONTACT FOR COAX CABLE D-602-0106 OR D-602-0094		SEE DRAWING D-602-0106 OR D-602-0094	SEE DRAWING D-602-0106 OR D-602-0094
CONTACT FOR TWISTED PAIR D-602-0104		SEE DRAWING D-602-0104	SEE DRAWING D-602-0104
POWER CONTACT SIZE 12	M39029/4-12-12	1/4" TO 5/16"	M22520/1-01 POSITIONER M22520/1-02

NOTES:

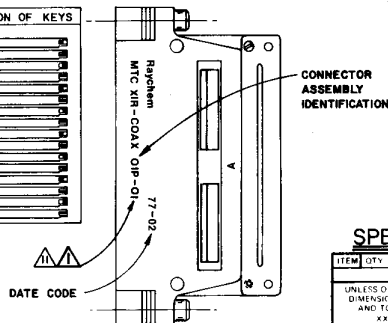
- KEYING CODE DOES NOT FORM A PART OF RAYCHEM PART NUMBER SYSTEM AND BE OMITTED WHEN ORDERING. KEYING PINS SUPPLIED UN-INSTALLED. SEE TABLE II FOR KEYING POSITIONS.
- COMPLETE CONNECTORS AND ACCESSORIES ARE INDIVIDUALLY BAGGED AND LABELED.
- REAR GROMMET INSERT WILL SEAL ON SMOOTH INSULATION FROM .097" TO .156" O.D.
- CONNECTOR DESIGNED FOR USE WITH POWER AND SHIELDED CONTACTS PER TABLE I.
- INSERTS ARE PERMANENTLY INSTALLED, CONTACTS MAY BE INSERTED & REMOVED USING TOOL PER NOTE 8.
- ALL UNUSED CAVITIES TO BE SEALED USING SEALING PLUG NUMBER M63723-28-12.
- ALL CONTACTS SIZE 12 ARE INSERTED AND REMOVED USING TOOL NUMBER M63723-31-12.
- CONNECTOR SUPPLIED WITH A SHIPPING DUST CAP OVER ENGAGING END.
- CONNECTOR RECEPTACLE PART NO. MTCXIR-COAX OIP-01-AA, AA = KEYING CODE
- MATES WITH PLUG CONNECTOR NO. MTCXIP-COAX OIS-01, PART NUMBER VARIABLE:

MTC XIR-COAX OIP-01
 B-NICKEL PLATE PER MIL-C-26074
 C-CADMIUM PLATE PER QQ-P-416 OVER NICKEL UNDERPLATE

12. DIMENSIONS WITHOUT TOLERANCES ARE TO BE CONSIDERED FOR REFERENCE ONLY.

TABLE II
 KEYING CODE CHART

PART NUMBER	X X	POSITION OF KEYS
MTC XIR-COAX OIP-01	AA	1
	AB	2
	AC	3
	AD	4
	BA	5
	BB	6
	BC	7
	CA	8
	CB	9
	CC	10
	CD	11
	DB	12
	DC	13
	DD	14
MTC XIR-COAX OIP-01		



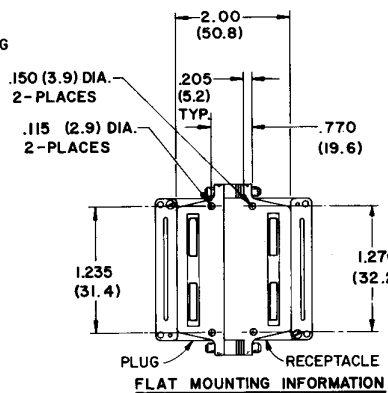
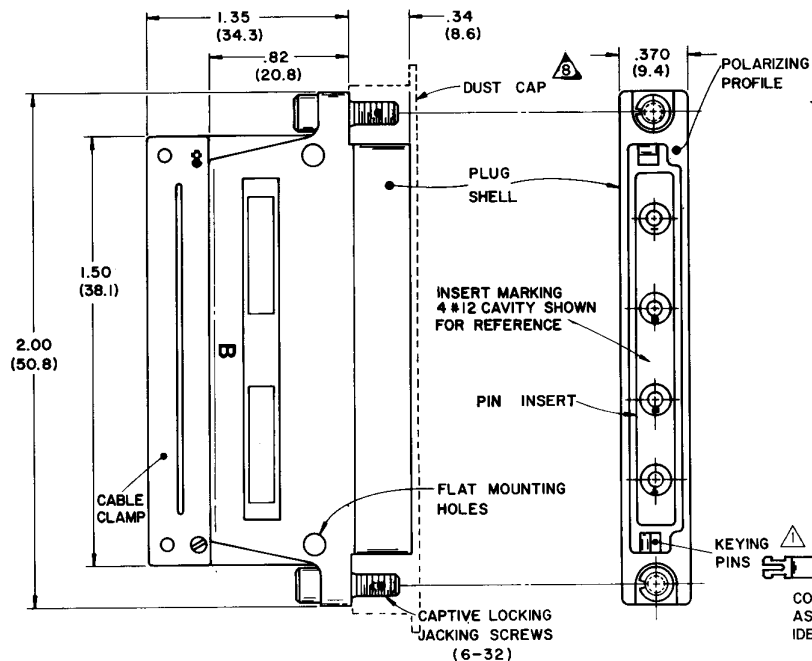
VIEW SHOWING IDENTIFICATION

If this document is printed it becomes uncontrolled.
 Check with the web for latest revision.

SPECIFICATION CONTROL DRAWING

ITEM	QTY	PART NUMBER	DWG OR SPEC	DESCRIPTION
PARTS LIST				
UNLESS OTHERWISE SPECIFIED DIMENSIONS ARE IN INCHES AND TOLERANCES ARE:	DRAWN: CRN	7-20-72	WIRE AND HARNESSING PRODUCTS	
XXX: .0005	CHECKED: 1/1	2-7-72	TYCOELECTRONICS/RAYCHEM 387 CONSTITUTION DRIVE	
XX: .001	APPROVED: 1/1	2-7-72	BENED PARK, CALIFORNIA 94025	
MATERIAL: _____	APPROVED: 1/1	2-7-72	TITLE	
FINISH: _____	APPROVED: 1/1	2-7-72	CONNECTOR, RCPT, RECTANGULAR, ENVIRONMENTAL, FIXED PIN INSERT	
	CAD FILE: T28702b.TIF		ONE INCH MTC SERIES	
	PROJECT: 6441-0037		SIZE	DWG NO
			D	D-652-0004
			SCALE	WEIGHT
				SHEET 2 OF 4

DO NOT SCALE THIS DRAWING	NEXT ASSY	USED ON
	APPLICATION	



ZONE	TR	REVISIONS	DATE	APPROVED
—	—	SEE SHEET 1		

SOCKET CONTACT AND TOOLING INFORMATION

TABLE I

CONTACT TYPE	MILITARY PART NO.	WIRE STRIP LENGTH	TERMINATION TOOL
SHIELDED CONTACT FOR COAX CABLE D-602-0094 OR D-602-0106		SEE DRAWING D-602-0094 OR D-602-0106	SEE DRAWING D-602-0094 OR D-602-0106
CONTACT FOR TWISTED PAIR D-602-0104		SEE DRAWING D-602-0104	SEE DRAWING D-602-0104
POWER CONTACT SIZE 12	M39029/4-12-12	1/4" TO 5/16"	M22520/1-01 POSITIONER M22520/1-02

TABLE II

KEYING CODE CHART

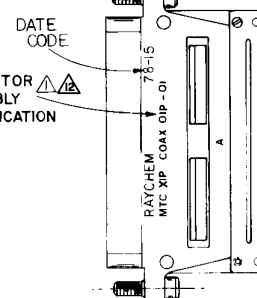
PART NUMBER	X X	POSITION OF KEYS
MTC XIP-COAX OIP-OI	AA	
	AB	
	AC	
	AD	
	BA	
	BB	
	BC	
	BD	
	CA	
	CB	
	CC	
	CD	
	DA	
	DB	
	DC	
MTC XIP-COAX OIP-OI	DD	

NOTES:

- KEYING CODE DOES NOT FORM A PART OF RAYCHEM PART NUMBER SYSTEM AND SHOULD BE OMITTED WHEN ORDERING. KEYING PINS SUPPLIED UN-INSTALLED. SEE TABLE II FOR KEYING POSITIONS.
- COMPLETE CONNECTORS AND ACCESSORIES ARE INDIVIDUALLY BAGGED AND LABELED.
- REAR GROMMET INSERT WILL SEAL ON SMOOTH INSULATION FROM .097" TO .158" O.D.
- CONNECTOR DESIGNED FOR USE WITH POWER AND SHIELDED CONTACTS PER TABLE I.
- INSERTS ARE PERMANENTLY INSTALLED, CONTACTS MAY BE INSERTED AND REMOVED USING TOOL PER NOTE 8.
- ALL UNUSED CAVITIES TO BE SEALED USING SEALING PLUG NUMBER M83723-28-12.
- ALL CONTACTS SIZE 12 ARE INSERTED AND REMOVED USING TOOL NUMBER M83723-31-12.
- CONNECTOR SUPPLIED WITH A SHIPPING DUST CAP OVER ENGAGING END.
- CONNECTOR PLUG PART NO. MTCXIP-COAX OIP-OI-AA. AA=KEYING CODE.
- MATES WITH RECEPTACLE CONNECTOR NO. MTCXIR-COAX OIS-OI.
- CONNECTOR MATING REQUIREMENTS: 9 in. lbs. TORQUE FOR CAPTIVE LOCKING SCREWS.
- PART NUMBER VARIABLE:

MTC XIP-COAX OIP-OI

- B=NICKEL PLATE PER MIL-C-26074
- C=CADMIUM PLATE PER QQ-P-416 OVER NICKEL UNDERPLATE

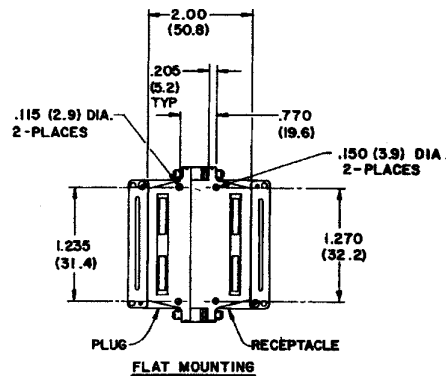
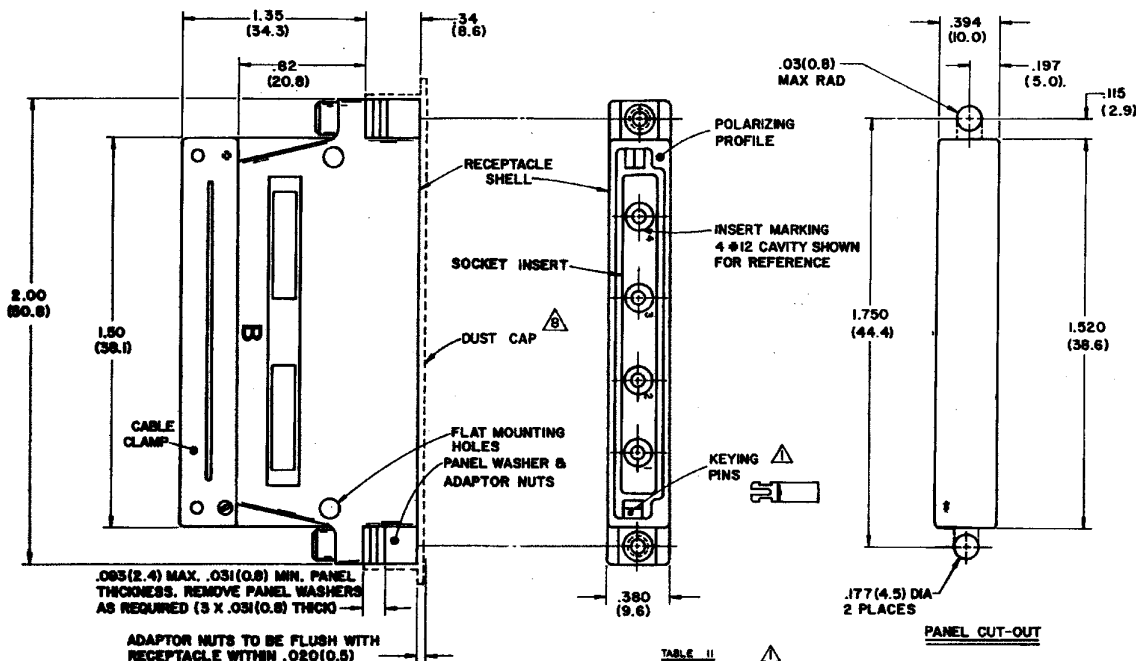


VIEW SHOWING IDENTIFICATION

If this document is printed it becomes uncontrolled.
Check with the web for latest revision.

SPECIFICATION CONTROL DRAWING

DESCRIPTION	
TYCOELECTRONICS/RAYCHEM 307 CONSTITUTION DRIVE MENLO PARK, CALIFORNIA 94025	WIRE AND HARNESSING PRODUCTS
CONNECTOR, PLUG, RECTANGULAR ENVIRONMENTAL, FIXED PIN INSERT - ONE INCH MTC SERIES	
CAD FILE: T28702c.TIF	DWG. NO. D-652-0004
6441-6037	J
WEIGHT	SHEET 3 OF 4



PIN CONTACT AND TOOLING INFORMATION

TABLE I

CONTACT TYPE	MILITARY PART NO.	WIRE STRIP LENGTH	TERMINATION TOOL
SHIELDED CONTACT FOR COAX CABLE D-602-0107 OR D-602-0095		SEE DRAWING D-602-0107 OR D-602-0095	SEE DRAWING D-602-0107 OR D-602-0095
CONTACT FOR TWISTED PAIR D-602-0105		SEE DRAWING D-602-0105	SEE DRAWING D-602-0105
POWER CONTACT SIZE 12	M39029/5-12-12	1/4" TO 5/16"	M22520/1-01 POSITIONER M22520/1-02

If this document is printed it becomes uncontrolled.
 Check with the web for latest revision.

SPECIFICATION CONTROL DRAWING

CRN 5-9-77		WIRE AND HARDWARE PRODUCTS	
TYP: COELECTRONICS/RAYCHEM		BENL D PARK, CALIFORNIA 94025	
CONNECTOR, RCPT, RECTANGULAR, ENVIRONMENTAL, FIXED SKT INSERT ONE INCH MTC SERIES			
CAD FILE:	T28702L.TIF	DATE:	D-652-0004
FILE NO:	6441-6037	REV:	

NOTES:

- KEYING CODE DOES NOT FORM A PART OF RAYCHEM PART NUMBER SYSTEM AND SHOULD BE OMITTED WHEN ORDERING. KEYING PINS SUPPLIED UN-INSTALLED. SEE TABLE II FOR KEYING POSITIONS.
- COMPLETE CONNECTORS AND ACCESSORIES ARE INDIVIDUALLY BAGGED AND LABELED.
- REAR BROADBENT INSERT WILL SEAL ON SMOOTH INSULATION FROM .097" TO .158" O.D.
- CONNECTOR DESIGNED FOR USE WITH POWER AND SHIELDED CONTACTS PER TABLE I.
- INSERTS ARE PERMANENTLY INSTALLED, CONTACTS MAY BE INSERTED & REMOVED USING TOOL PER NOTE 8.
- ALL UNUSED CAVITIES TO BE SEALED USING SEALING PLUG NUMBER M83723-28-12.
- ALL CONTACTS SIZE 12 ARE INSERTED AND REMOVED USING TOOL NUMBER M83723-31-12.

- CONNECTOR SUPPLIED WITH A SHIPPING DUST CAP OVER ENGAGING END
- CONNECTOR RECEPTACLE PART NO. MTCXR-COAX OIS-OI-AA. AA = KEYING CODE
- INSERTS WITH PLUG CONNECTOR NO. MTCXP-COAX OIP-OI.

PART NUMBER VARIABLE:

MTC-XR-COAX OIS-OI

—B—NICKEL PLATE PER MIL-C-26074

—C—CADMIUM PLATE PER QQ-P-416 OVER NICKEL UNDERPLATE

12. DIMENSIONS WITHOUT TOLERANCES ARE TO BE CONSIDERED FOR REFERENCE ONLY.

TABLE II
 KEYING CODE CHART

PART NUMBER	XX	POSITION OF KEYS
MTC-XR-COAX OIS-OI	AA	1
	AB	2
	AC	3
	AD	4
	AE	5
	AF	6
	AG	7
	AH	8
	AI	9
	AJ	10
	AK	11
	AL	12
	AM	13
	AN	14
	AO	15
	AP	16
	AQ	17
	AR	18
	AS	19
	AT	20
	AU	21
	AV	22
	AW	23
	AX	24
	AY	25
	AZ	26
	BA	27
	BB	28
	BC	29
	BD	30
	BE	31
	BF	32
	BG	33
	BH	34
	BI	35
	BJ	36
	BK	37
	BL	38
	BM	39
	BN	40
	BO	41
	BP	42
	BQ	43
	BR	44
	BS	45
	BT	46
	BU	47
	BV	48
	BW	49
	BX	50
	BY	51
	BZ	52
	CA	53
	CB	54
	CC	55
	CD	56
	CE	57
	CF	58
	CG	59
	CH	60
	CI	61
	CJ	62
	CK	63
	CL	64
	CM	65
	CN	66
	CO	67
	CP	68
	CQ	69
	CR	70
	CS	71
	CT	72
	CU	73
	CV	74
	CW	75
	CX	76
	CY	77
	CA	78
	CB	79
	CC	80
	CD	81
	CE	82
	CF	83
	CG	84
	CH	85
	CI	86
	CJ	87
	CK	88
	CL	89
	CM	90
	CN	91
	CO	92
	CP	93
	CQ	94
	CR	95
	CS	96
	CT	97
	CU	98
	CV	99
	CW	100
	CX	101
	CY	102
	CA	103
	CB	104
	CC	105
	CD	106
	CE	107
	CF	108
	CG	109
	CH	110
	CI	111
	CJ	112
	CK	113
	CL	114
	CM	115
	CN	116
	CO	117
	CP	118
	CQ	119
	CR	120
	CS	121
	CT	122
	CU	123
	CV	124
	CW	125
	CX	126
	CY	127
	CA	128
	CB	129
	CC	130
	CD	131
	CE	132
	CF	133
	CG	134
	CH	135
	CI	136
	CJ	137
	CK	138
	CL	139
	CM	140
	CN	141
	CO	142
	CP	143
	CQ	144
	CR	145
	CS	146
	CT	147
	CU	148
	CV	149
	CW	150
	CX	151
	CY	152
	CA	153
	CB	154
	CC	155
	CD	156
	CE	157
	CF	158
	CG	159
	CH	160
	CI	161
	CJ	162
	CK	163
	CL	164
	CM	165
	CN	166
	CO	167
	CP	168
	CQ	169
	CR	170
	CS	171
	CT	172
	CU	173
	CV	174
	CW	175
	CX	176
	CY	177
	CA	178
	CB	179
	CC	180
	CD	181
	CE	182
	CF	183
	CG	184
	CH	185
	CI	186
	CJ	187
	CK	188
	CL	189
	CM	190
	CN	191
	CO	192
	CP	193
	CQ	194
	CR	195
	CS	196
	CT	197
	CU	198
	CV	199
	CW	200
	CX	201
	CY	202
	CA	203
	CB	204
	CC	205
	CD	206
	CE	207
	CF	208
	CG	209
	CH	210
	CI	211
	CJ	212
	CK	213
	CL	214
	CM	215
	CN	216
	CO	217
	CP	218
	CQ	219
	CR	220
	CS	221
	CT	222
	CU	223
	CV	224
	CW	225
	CX	226
	CY	227
	CA	228
	CB	229
	CC	230
	CD	231
	CE	232
	CF	233
	CG	234
	CH	235
	CI	236
	CJ	237
	CK	238
	CL	239
	CM	240
	CN	241
	CO	242
	CP	243
	CQ	244
	CR	245
	CS	246
	CT	247
	CU	248
	CV	249
	CW	250
	CX	251
	CY	252
	CA	253
	CB	254
	CC	255
	CD	256
	CE	257
	CF	258
	CG	259
	CH	260
	CI	261
	CJ	262
	CK	263
	CL	264
	CM	265
	CN	266
	CO	267
	CP	268
	CQ	269
	CR	270
	CS	271
	CT	272
	CU	273
	CV	274
	CW	275
	CX	276
	CY	277
	CA	278
	CB	279
	CC	280
	CD	281
	CE	282
	CF	283
	CG	284
	CH	285
	CI	286
	CJ	287
	CK	288
	CL	289
	CM	290
	CN	291
	CO	292
	CP	293
	CQ	294
	CR	295
	CS	296
	CT	297
	CU	298
	CV	299
	CW	300
	CX	301
	CY	302
	CA	303
	CB	304
	CC	305
	CD	306
	CE	307
	CF	308
	CG	309
	CH	310
	CI	311
	CJ	312
	CK	313
	CL	314
	CM	315
	CN	316
	CO	317
	CP	318
	CQ	319
	CR	320
	CS	321
	CT	322
	CU	323
	CV	324
	CW	325
	CX	326
	CY	327
	CA	328
	CB	329
	CC	330
	CD	331
	CE	332
	CF	333
	CG	334
	CH	335
	CI	336
	CJ	337
	CK	338
	CL	339
	CM	340
	CN	341
	CO	342
	CP	343
	CQ	344
	CR	345
	CS	346
	CT	347
	CU	348
	CV	349
	CW	350
	CX	351
	CY	352
	CA	353
	CB	354
	CC	355
	CD	356
	CE	357
	CF	358
	CG	359
	CH	360
	CI	361
	CJ	362
	CK	363
	CL	364
	CM	365
	CN	366
	CO	367
	CP	368
	CQ	369
	CR	370
	CS	371
	CT	372
	CU	373
	CV	374
	CW	375
	CX	376
	CY	377
	CA	378
	CB	379
	CC	380
	CD	381
	CE	382
	CF	383
	CG	384
	CH	385
	CI	386
	CJ	387
	CK	388
	CL	389
	CM	390
	CN	391
	CO	392
	CP	393
	CQ	394
	CR	395
	CS	396
	CT	397
	CU	398
	CV	399
	CW	400
	CX	401
	CY	402
	CA	403
	CB	404
	CC	405
	CD	406
	CE	407
	CF	408
	CG	409
	CH	410
	CI	411
	CJ	412
	CK	413
	CL	414
	CM	415
	CN	416
	CO	417
	CP	418
	CQ	419
	CR	420
	CS	421
	CT	422
	CU	423
	CV	424
	CW	425
	CX	426
	CY	427
	CA	428
	CB	429
	CC	430

Mouser Electronics

Authorized Distributor

Click to View Pricing, Inventory, Delivery & Lifecycle Information:

[TE Connectivity:](#)

[MTCC1P-COAX-01P-01CS013](#)