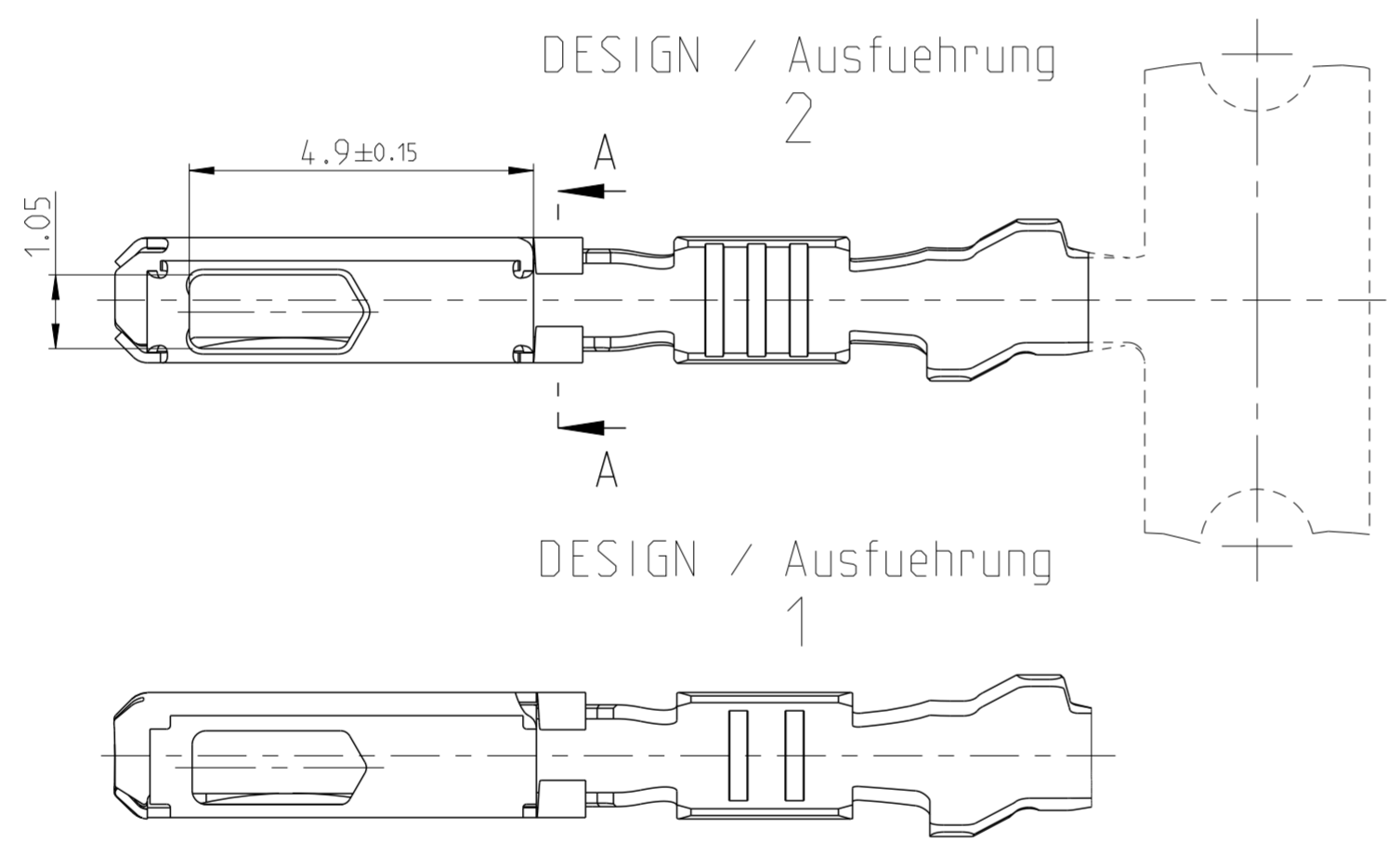
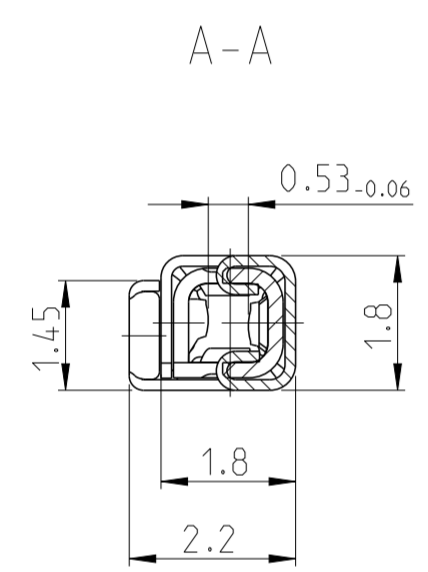
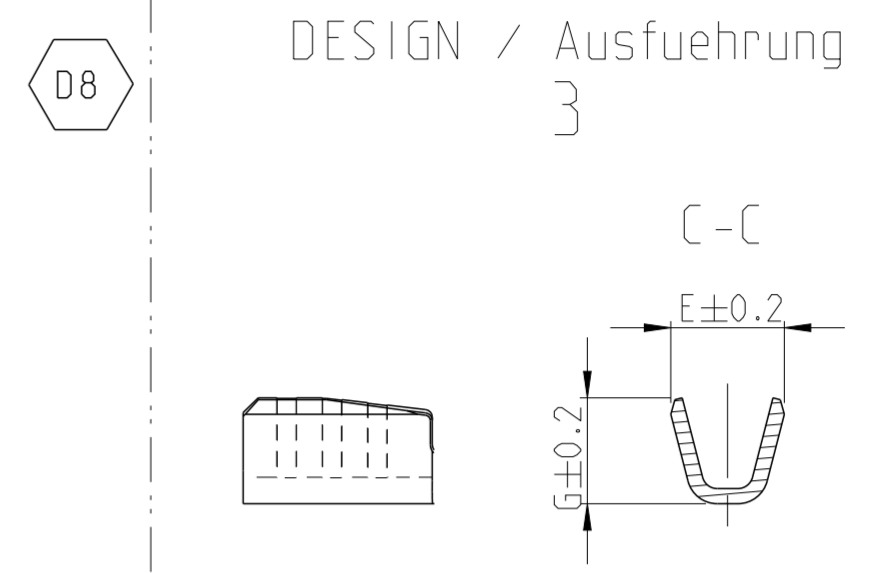
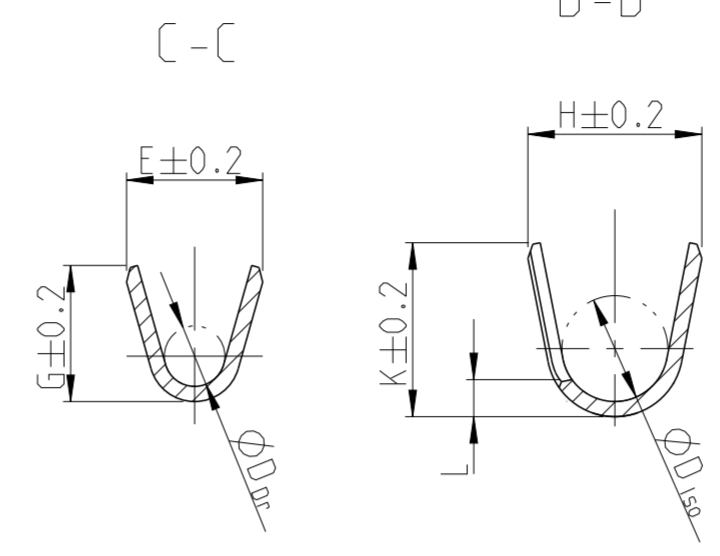
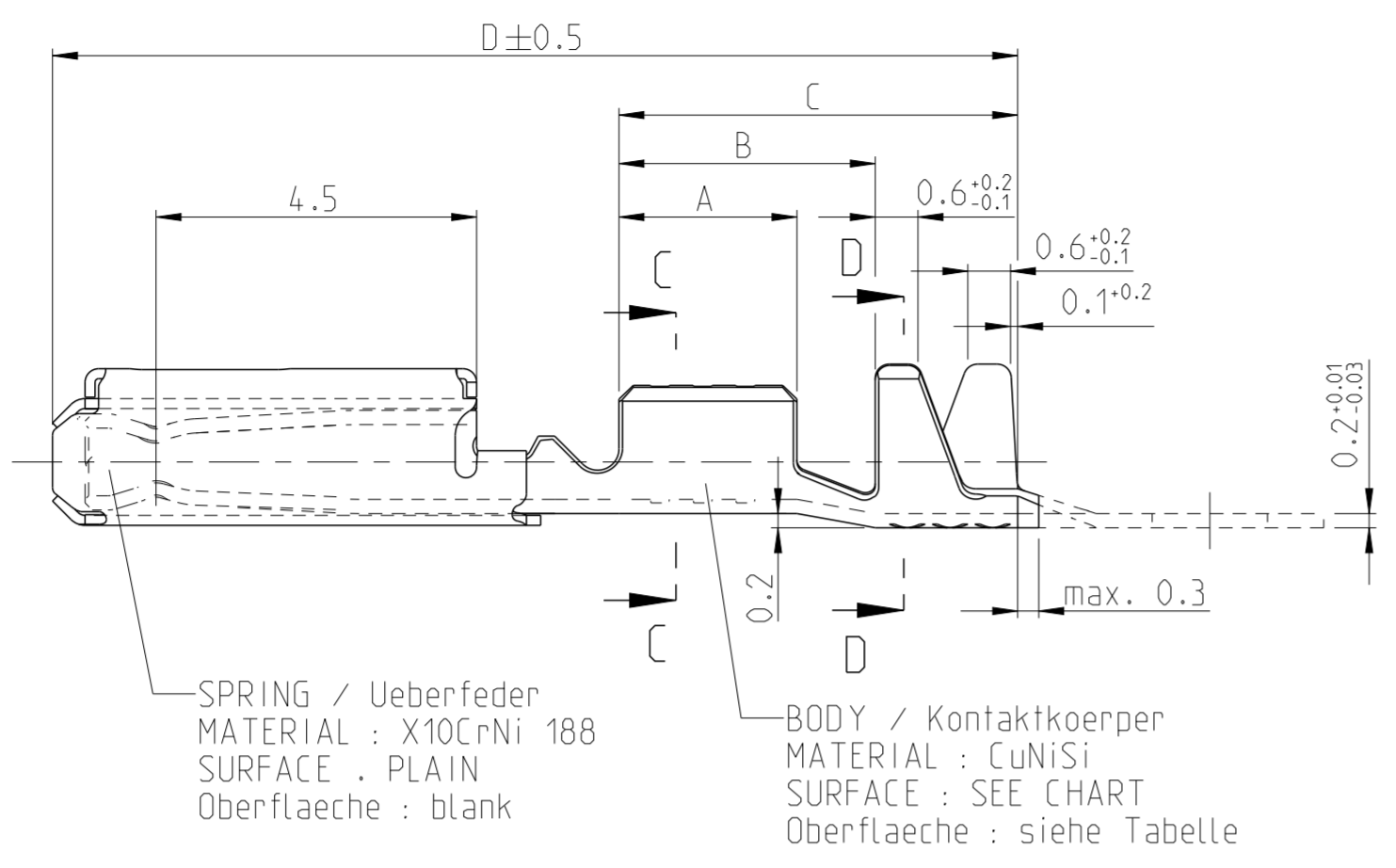
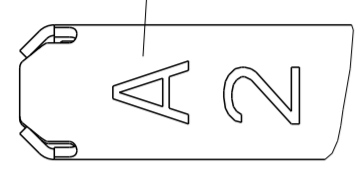


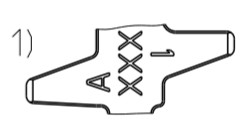
| LOC | DIST | REVISIONS                                    |           |      |      |
|-----|------|--|-----------|------|------|
| P   | LTR  | DESCRIPTION                                  | DATE      | DWN  | APVD |
| A1  | -    |  |           |      |      |
| D5  |      | LP variants removed. ECR-13-015135           | 30SEP2013 | Abr  | Brun |
| D6  |      | New variant added 5-1534116-3. ECR-14-011727 | 04AUG2014 | Mah  | Brun |
| D7  |      | NOTE % ADDED. ECR-15-007039                  | 06MAY2015 | Abr  | Brun |
| D8  |      | 2295077-1 ADDED PER ECR-15-017111            | 23NOV2015 | MAH. | BRUN |

MARKING GOLDVERSION  
 Kennzeichnung Goldausfuehrung



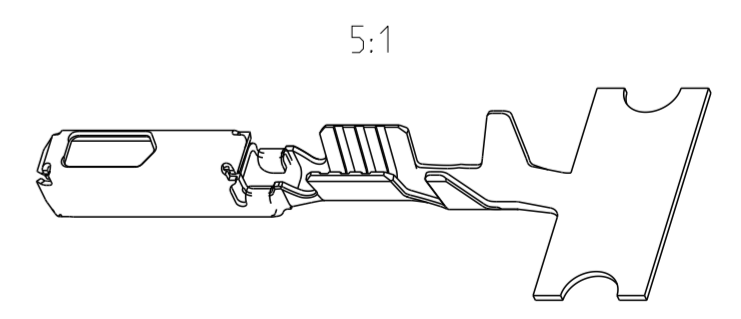
NOTES  
 Bemerkungen

- SUITABLE FOR PIN CONTACT SEE DRAWING: TE: 929453  
 Passend zu Stiftkontakt siehe Zeichnung: TE: 929453
- FOR FLR-CONDUCTOR ACCORDING TO DIN 72551-6 ONLY  
 Nur fuer FLR-Leitung nach DIN 72551, Teil 6
- DETAILS OF DESIGN ARE LEFT TO MANUFACTURER  
 Einzelheiten der Ausfuehrung bleiben dem Hersteller ueberlassen
- TE REVISION AND DIE IDENTIFICATION (E.G. REV. A DIE-NO. 1)  
 TE Revision und Werkzeug-Nr.(z.B. Rev. A Wkzg.-Nr. 1)
- WITH DOUBLE-OUT DIES THE FIRST SPRING WILL BE PROVIDED  
 WITH AN INDICATION "-"  
 Bei doppelt fallenden Werkzeugen wird die erste Ueberfeder  
 mit einer Kennzeichnung "- " versehen



| ORDER NO. DESIGN Bestell-Nr. Ausfuehrung   | ORDER NO. DESIGN Bestell-Nr. Ausfuehrung   | REV | ORDER NO. DESIGN Bestell-Nr. Ausfuehrung   | REV | WIRE SIZE RANGE DGB mm <sup>2</sup> | INSULATION Isolations Ø | SURFACE CONTACT AREA Oberflaeche Kontaktzone | LENGTH Laenge mm                          | WIRE CRIMP Drahtcrimp mm                    | INSU. CRIMP Iso' Crimp mm                                | WEIGHT Gewicht g |
|--|--|-----|--|-----|-------------------------------------|-------------------------|--|---|---|--|------------------|
| -  | 2295077-1                                  | A   | -  | -   | 0.08-0.22                           | 0.85-1.2                | TIN PLATED vorverzinnt                       | A = 2.5<br>B = 3.7<br>C = 5.4<br>D = 13.6 | E = 1.5<br>G = 1.4<br>D <sub>Dr</sub> = 0.2 | H = 2.0<br>K = 1.9<br>L = 0.65<br>D <sub>Iso</sub> = 1.1 | 0.15             |
| 5-1703282-2                                | -  | A   | 1703282-2                                  | B   | 0.5-0.75                            | 1.4-1.9                 | Au   | A = 2.8<br>B = 3.8<br>C = 5.6<br>D = 13.6 | E = 2<br>G = 2.1<br>D <sub>Dr</sub> = 1     | H = 2.7<br>K = 2.9<br>L = 0.7<br>D <sub>Iso</sub> = 1.4  | 0.13             |
| 5-1703282-1                                | -  | A   | 1703282-1                                  | A   | -                                   | -                       | TIN PLATED vorverzinnt                       | -   | -   | -  | -                |
| 5-1534116-3                                | -  | A   | -  | -   | -                                   | -                       | Ag   | -   | -   | -  | -                |
| 5-1534116-2                                | -  | A   | 1534116-2                                  | B   | 0.35-0.5                            | 1.2-1.6                 | Au   | A = 2.5<br>B = 3.6<br>C = 5.6<br>D = 13.6 | E = 1.8<br>G = 1.8<br>D <sub>Dr</sub> = 0.8 | H = 2.3<br>K = 2.3<br>L = 0.6<br>D <sub>Iso</sub> = 1.4  | 0.12             |
| 5-1534116-1                                | -  | A   | 1534116-1                                  | B   | -                                   | -                       | TIN PLATED vorverzinnt                       | -   | -   | -  | -                |
| ORDER NO. DESIGN Bestell-Nr. Ausfuehrung 2 | ORDER NO. DESIGN Bestell-Nr. Ausfuehrung 3 | REV | ORDER NO. DESIGN Bestell-Nr. Ausfuehrung 1 | REV |                                     |                         |  |   |   |  |                  |

D8



THIS DRAWING IS A CONTROLLED DOCUMENT.

DWN: R.Schaefer 29JAN2002  
 CHK: H.Kampmann 05JUL2007  
 APVD: M.Bleicher 29APR2008

**STE** TE Connectivity

NAME: MQS 2POINT, CLEANBODY  
 PRODUCT GROUP DRAWING SOCKET CONTACT  
 Produktgruppenzeichnung Buchsenkontakt

PRODUCT SPEC: 108-18874  
 APPLICATION SPEC: 114-18021

SIZE: A2 CAGE CODE: 00779 DRAWING NO: 1534615 RESTRICTED TO: -

MATERIAL: - FINISH: - WEIGHT: -

CUSTOMER DRAWING SCALE: 10:1 SHEET: 1 OF 1 REV: D8

# Mouser Electronics

Authorized Distributor

Click to View Pricing, Inventory, Delivery & Lifecycle Information:

[TE Connectivity:](#)

[5-1703282-1](#)