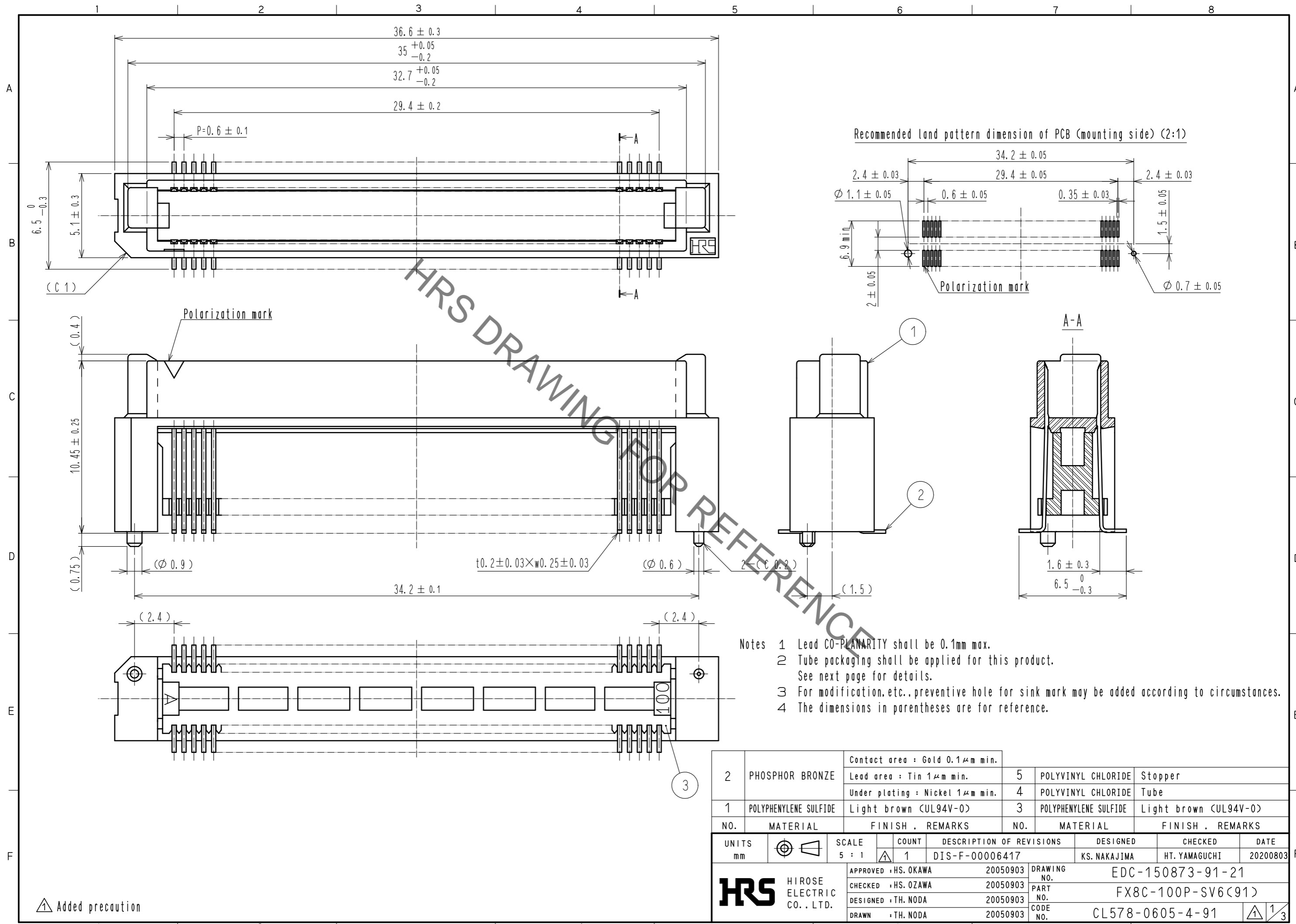


Aug.1.2020 Copyright 2020 HIROSE ELECTRIC CO., LTD. All Rights Reserved.
In case of consideration for using Automotive equipment / device which demand high reliability, kindly contact our sales window correspondents.



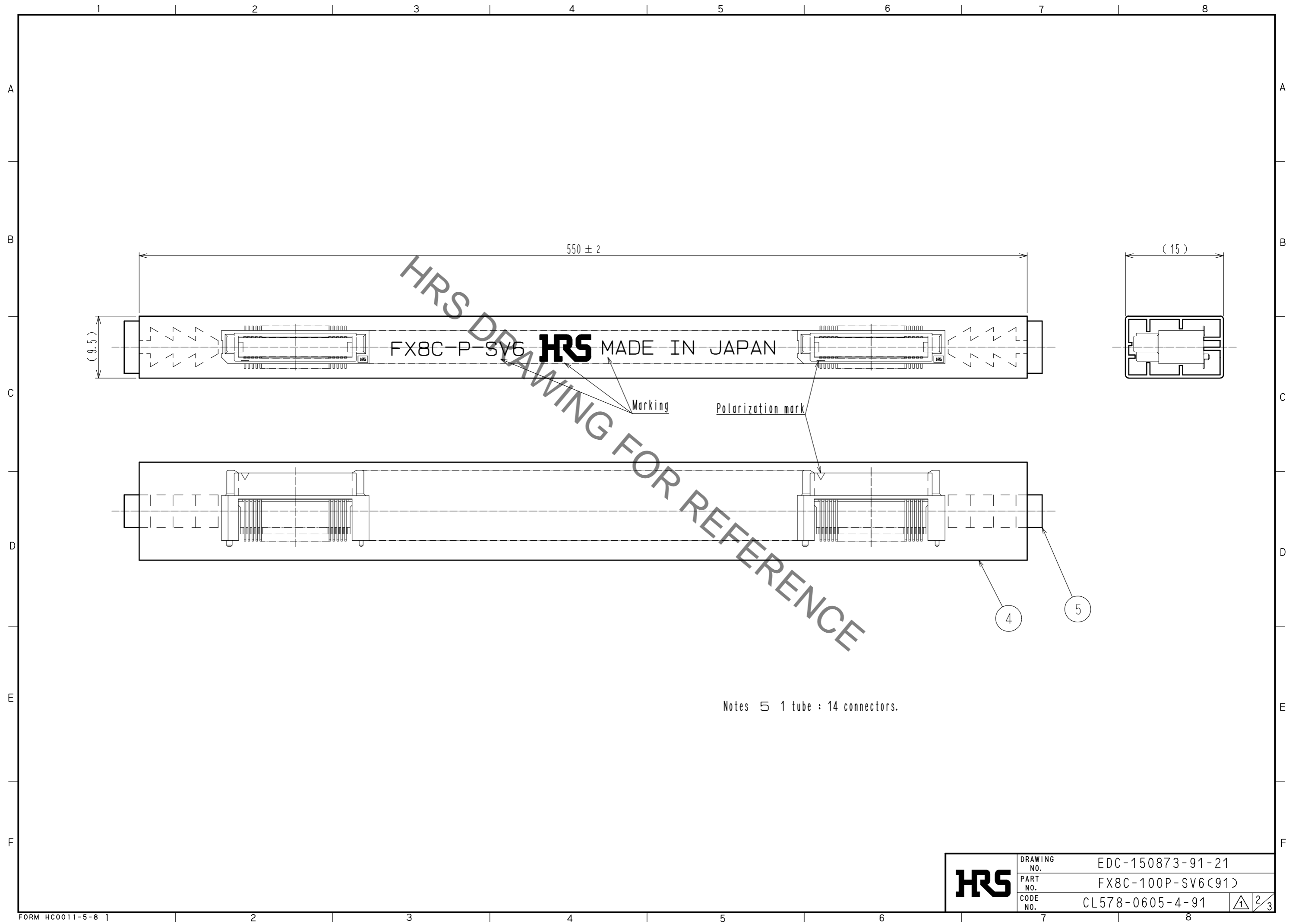
- Notes
- Lead CO-PLANARITY shall be 0.1mm max.
 - Tube packaging shall be applied for this product. See next page for details.
 - For modification, etc., preventive hole for sink mark may be added according to circumstances.
 - The dimensions in parentheses are for reference.

NO.	MATERIAL	FINISH .	REMARKS	NO.	MATERIAL	FINISH .	REMARKS
2	PHOSPHOR BRONZE		Contact area : Gold $0.1 \mu\text{m}$ min.	5	POLYVINYL CHLORIDE		Stopper
			Lead area : Tin $1 \mu\text{m}$ min.	4	POLYVINYL CHLORIDE		Tube
			Under plating : Nickel $1 \mu\text{m}$ min.	3	POLYPHENYLENE SULFIDE		Light brown (UL94V-0)
1	POLYPHENYLENE SULFIDE		Light brown (UL94V-0)				

UNITS		SCALE	COUNT	DESCRIPTION OF REVISIONS	DESIGNED	CHECKED	DATE
mm		5 : 1	1	DIS-F-00006417	KS. NAKAJIMA	HT. YAMAGUCHI	20200803
APPROVED : HS. OKAWA		20050903		DRAWING NO.		EDC-150873-91-21	
CHECKED : HS. OZAWA		20050903		PART NO.		FX8C-100P-SV6(91)	
DESIGNED : TH. NODA		20050903		CODE NO.		CL578-0605-4-91	
DRAWN : TH. NODA		20050903					

Added precaution

Aug.1.2020 Copyright 2020 HIROSE ELECTRIC CO., LTD. All Rights Reserved.
In case of consideration for using Automotive equipment / device which demand high reliability, kindly contact our sales window correspondents.



HRS	DRAWING NO.	EDC-150873-91-21
	PART NO.	FX8C-100P-SV6(91)
	CODE NO.	CL578-0605-4-91
		2/3

Aug.1.2020 Copyright 2020 HIROSE ELECTRIC CO., LTD. All Rights Reserved.
In case of consideration for using Automotive equipment / device which demand high reliability, kindly contact our sales window correspondents.

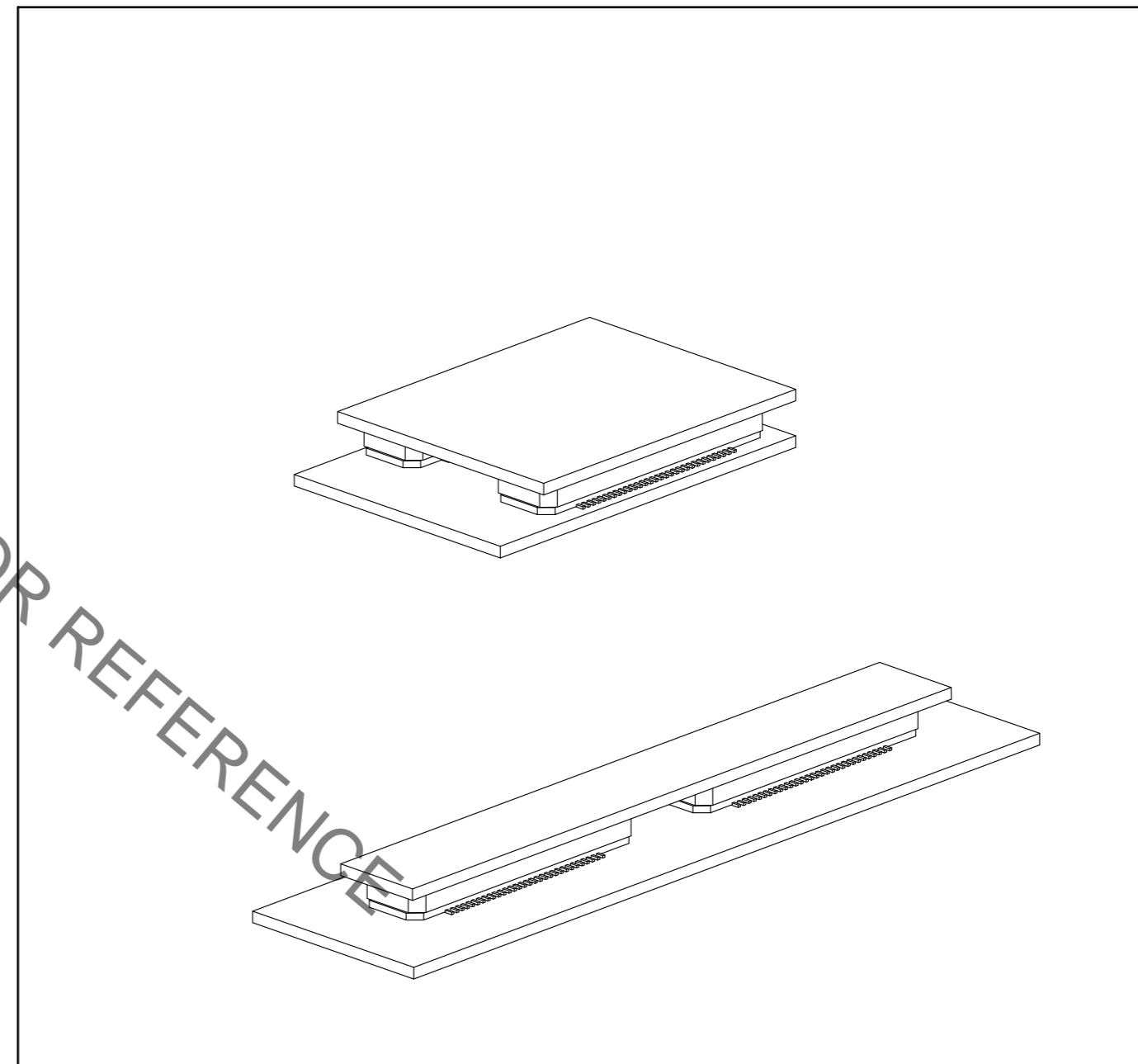
【 Precaution 】

When a board with multiple connectors mounted is mated, the connector may be damaged or deformed.
Please divide one side of the board so only one connector is mated per board.

OK



NG



HRS DRAWING FOR REFERENCE

HRS	DRAWING NO.	EDC-150873-91-21
	PART NO.	FX8C-100P-SV6(91)
	CODE NO.	CL578-0605-4-91
		3/3