

EP Cores (6578100121)



Part Number: 6578100121

78 EP CORE SET

EP designs reduce the effect of residual air gap upon the effective permeability of the core, hence they minimize coil volume for a given inductance. EP cores also provide a high degree of isolation from adjacent components and are advantageously used in low power devices, matching and broadband transformers.

□ EP cores can be supplied with the center post gapped to a mechanical dimension or an A_L value.

Weight indicates is per pair or set.

Weight: 1.4 (g)

Dim	mm	mm tol	nominal inch	inch misc.
A	11.5	± 0.30	0.453	—
B	5.1	± 0.20	0.201	—
C	7.7	± 0.20	0.303	—
D	3.8	± 0.20	0.15	—
E	9.4	± 0.20	0.37	—
F	3.3	± 0.20	0.13	—
K	1.95	min	0.077	—

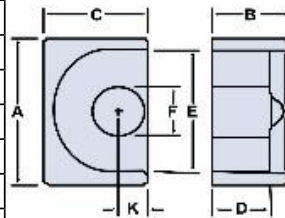



Chart Legend

$\Sigma l / A$: Core Constant, l_e : Effective Path Length, A_e : Effective Cross- Sectional Area, V_e : Effective Core Volume

A_L : Inductance Factor 

Explanation of Part Numbers: Digits 1 & 2 = product class and 3 & 4 = material grade.

Electrical Properties	
A_L (nH)	1000 ±25%
A_e (cm ²)	0.11
$\Sigma l / A$ (cm ⁻¹)	16.8
l_e (cm)	1.85
V_e (cm ³)	0.203
A_{min} (cm ²)	0.085

A_L value is measured at 1 kHz, B < 10 gauss

Mouser Electronics

Authorized Distributor

Click to View Pricing, Inventory, Delivery & Lifecycle Information:

Fair-Rite:

6578100121