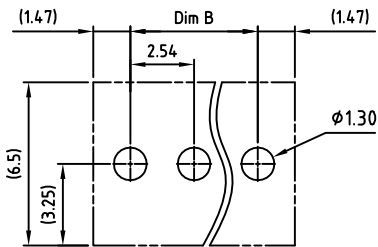
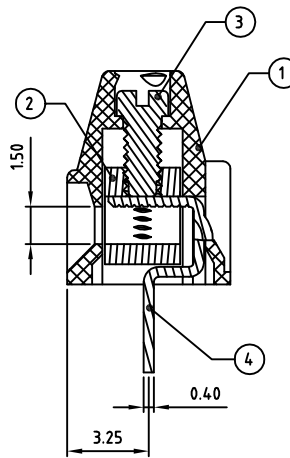
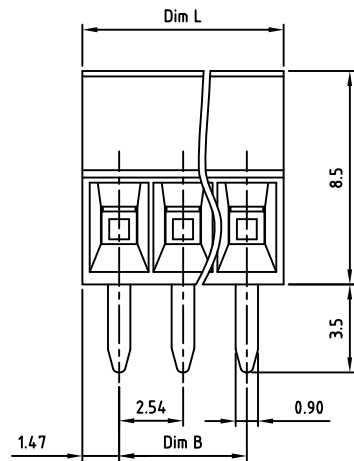
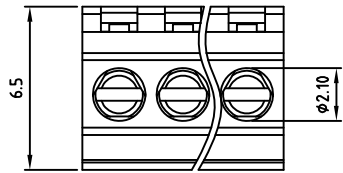


Transfer or duplication of this document as well as the utilisation or communication of its content are not permitted unless express consent is granted. Violations give rise to claims for damages. All rights reserved in case of patent, utility model or design patent registrations.



P.C.B. LAYOUT

Technical data

- 1.Nominal voltage: 150V/6A
PITCH:2.54mm
- 2.Connection capacity:
AWG 30-18
- 3.Insulation Withstanding Voltage:
AC 1300V/MIN
- 4.Insulation Resistance:
1000MΩ or more at DC500V
- 5.Tightening torque:
1.5kgf.cm (0.15N.m)
- 6.Screw thread: M1.6
- 7.Stripping length: 4-5mm
- 8.Operating temperature range:-40°C - 115°C

9.Undimensioned Tolerances:

Dim.L=Px2.54+0.4		
Dim.B=(P-1)x2.54		
P= number of poles		
	Dim B	Dim L
0-30mm	±0.15	±0.20
over 30mm-60mm	±0.20	±0.25
over 60mm-90mm	±0.25	±0.30
over 90mm	±0.30	±0.40

10.Safety approval:

11.RoHS Compliance

Part No.: OSTVNXXA150

No. of Poles	COLOR
02 2 Poles	0: Black
03 3 Poles	2: Red
...	3: Orange
24 24 Poles	4: Yellow
	5: Green (Standard)
Nonstandard colors	6: Blue
Mins could apply	8: Grey

4	CAGE	BRASS	Tin PLATED	P
3	SCREW	STEEL	M1.6x0.35, Zn Plated	P
2	CAGE	BRASS	M1.6x0.35, Ni PLATED	P
1	BODY	PA66 UL94V-0	ALL COLOR	1
ITEM	NAME OF PART	MATERIAL	NOTES	Q'TY
DWG.	WF. Zhang	DATE	2016.05.18	UNITS: MM SHEET: 1 OF 1 Tolerance
CHK.		DATE		SCALE: NONE 5:1 (:) REV.: A X. ±0.50
APP.		DATE		OSTVN 2.54mm Series X.X ±0.30
				"-" Slot Screw X.XX ±0.10
				PART NO. OSTVNXXA150 X* ±1°
				DWG NO. OSTVNXXA150.dwg

	SIGN	DESCRIPTION	CHK.	DATE
--	------	-------------	------	------



ON-SHORE TECHNOLOGY, INC.

