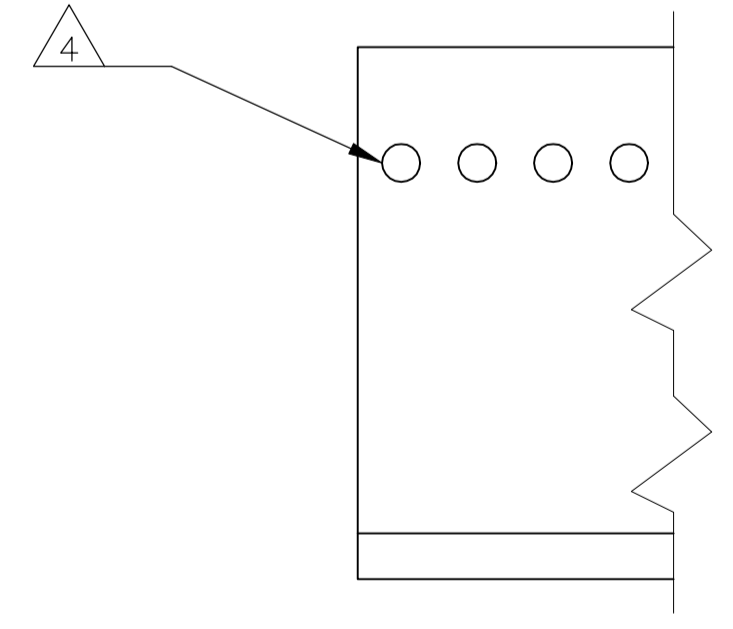
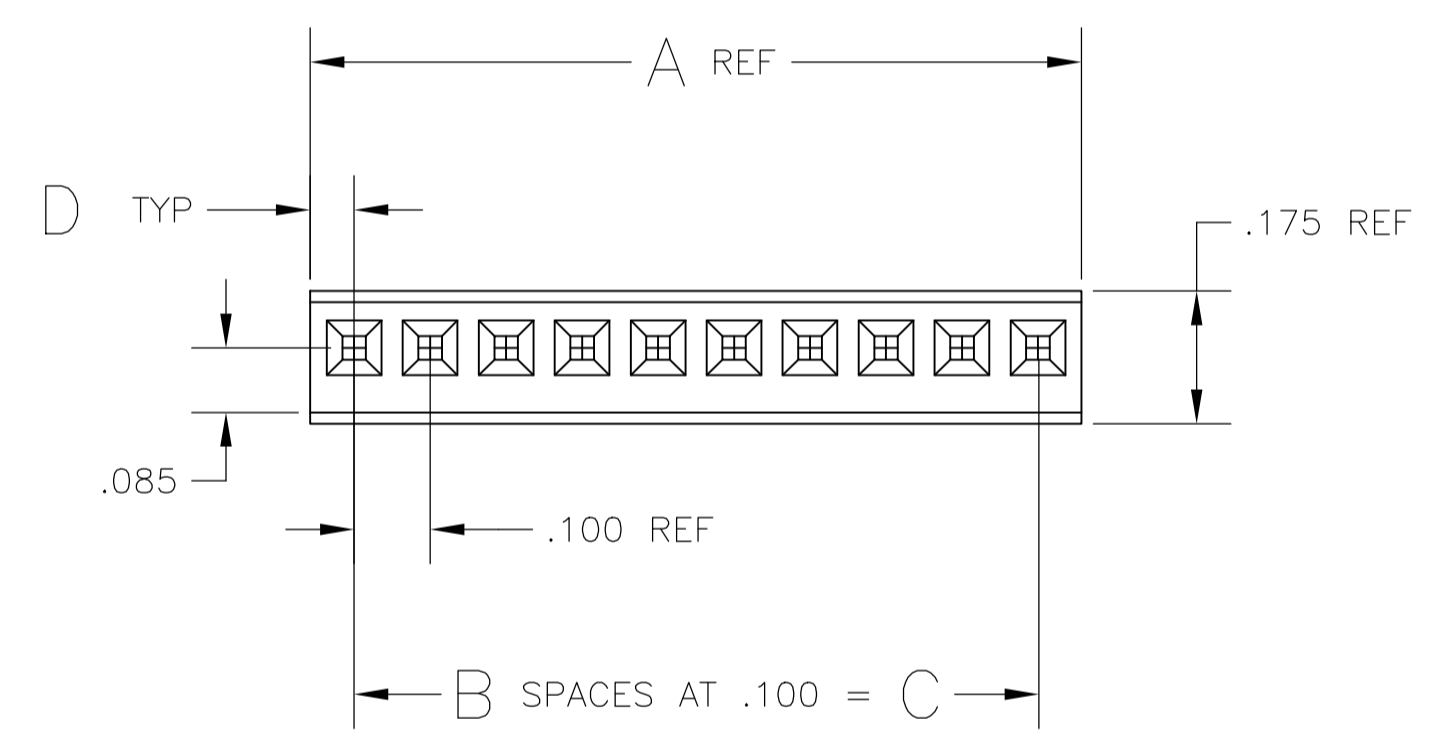
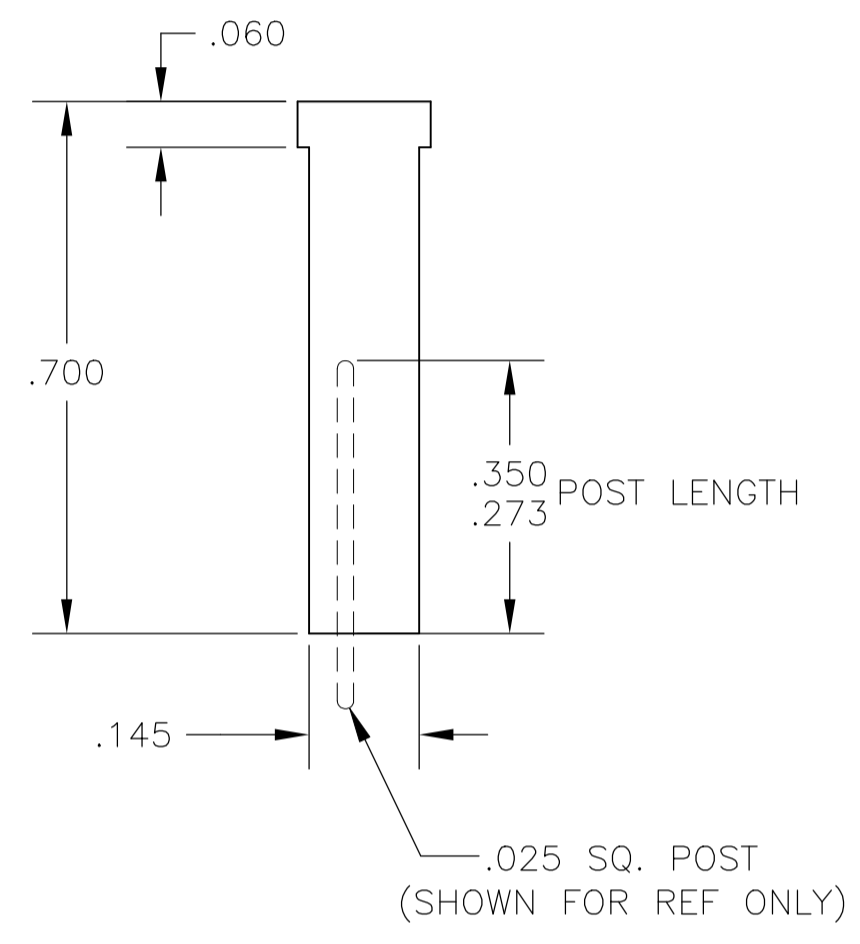
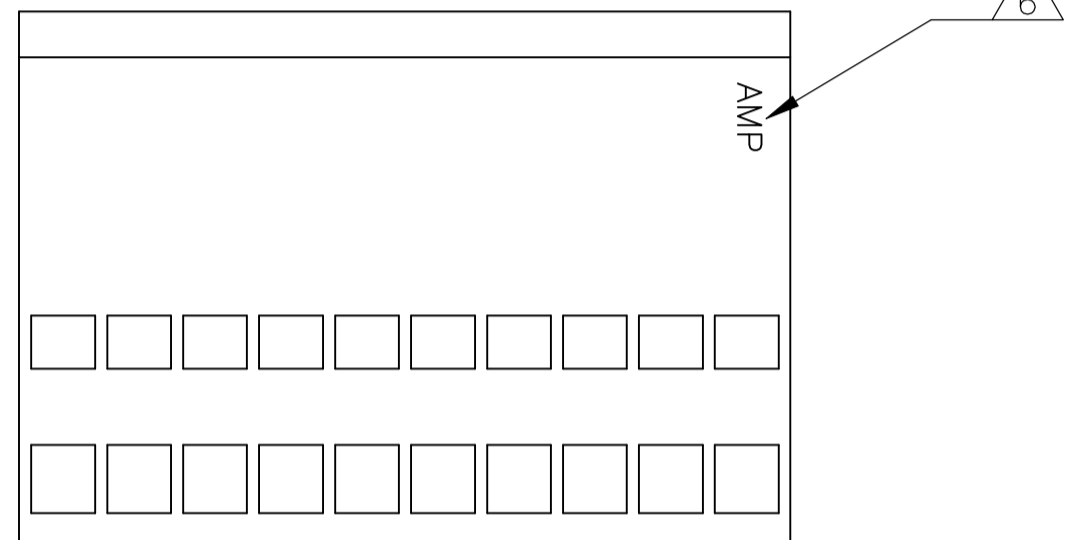
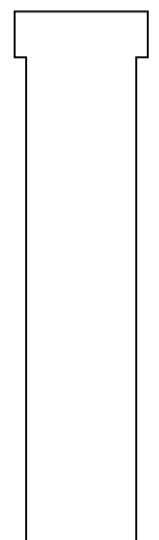
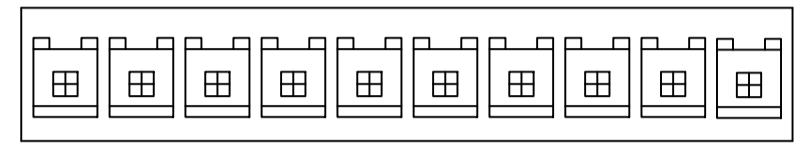


REVISIONS					
P	LTR	DESCRIPTION	DATE	DRN	APVD
V		REVISED PER ECO-18-000976	28MAY2018	RS	JO

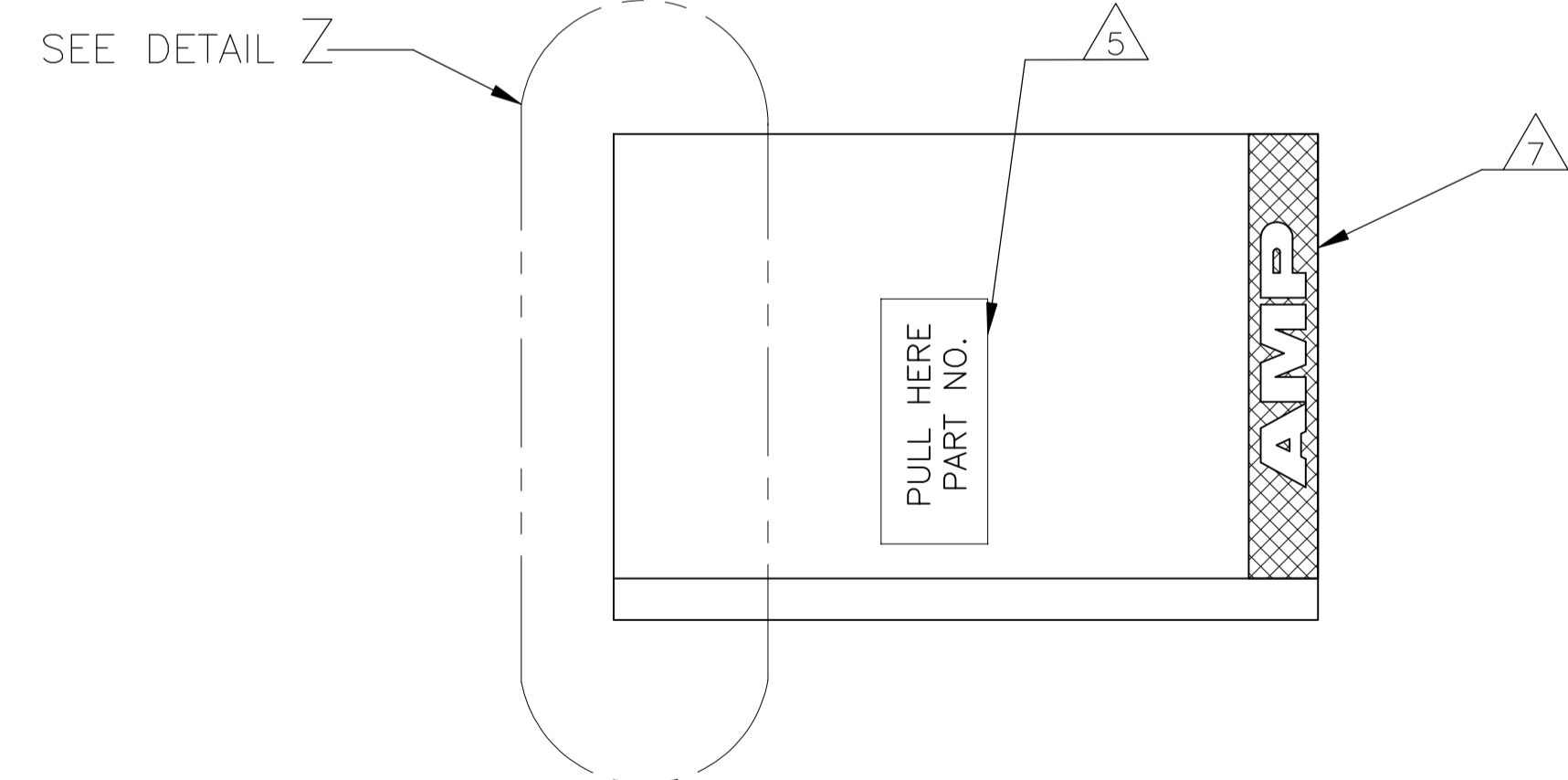
PRODUCT INSTRUCTION

PULL ON HOUSING TO REMOVE FROM POSTS.
 DO NOT CONFINE THE CONDUCTORS OR PULL ON THE
 CONDUCTORS DURING REMOVAL ACTION.

- 1. HOUSING ACCEPTS LOCKING CLIP CONTACT PART NO.S 87124, 87165, 87190, 87191, & MATES WITH .025 SQ. POSTS.
- 2. HOUSING: GLASS FILLED NYLON.
- 3. HOUSING: GLASS FILLED POLYESTER.
- 4. CORE PIN SUPPORT HOLES ARE OPTIONAL, AND MAY BE ROUND OR SQUARE OR MAY NOT BE PRESENT AT ALL.
- 5. MARKED AS SHOWN, THIS SIDE ONLY, APPROXIMATELY IN CENTER OF HOUSING. 'PULL HERE' AND PART NO. TO APPEAR ON HOUSING 6 POS AND LARGER.
- 6. RAISED AMP LOGO MOLDED IN HOUSING.
- 7. TEXTURED AMP LOGO MOLDED IN HOUSING. LOGO MAY APPEAR ON EITHER END OF HOUSING.



DETAIL Z



NOTES	MAT'L	COLOR	D	C	B	A	POS	PART NUMBER (AS MOLDED)	PART NUMBER (STAMPED)
SUPERSEDED BY 87175-2	△	BROWN	.058	.300	3	.416	4	6-87175-3	-
SUPERSEDED BY 87175-2	△	YELLOW	.054	0	0	.108	1	3-87175-4	-
SUPERSEDED BY 87175-2	△	ORANGE	.054	0	0	.108	1	3-87175-3	-
SUPERSEDED BY 87175-2	△	RED	.054	0	0	.108	1	3-87175-2	-
	△	BROWN	.054	0	0	.108	1	-	-
	△	BLACK	.058	1.300	13	1.416	14	3-87175-0	2-87175-9
	△	BLACK	.058	1.200	12	1.316	13	2-87175-8	2-87175-7
	△	BLACK	.058	1.100	11	1.216	12	2-87175-6	2-87175-5
	△	BLACK	.058	1.000	10	1.016	11	2-87175-4	2-87175-3
	△	BLACK	.058	.900	9	1.016	10	2-87175-2	2-87175-1
	△	BLACK	.058	.800	8	.916	9	2-87175-0	1-87175-9
	△	BLACK	.058	.700	7	.816	8	1-87175-8	1-87175-7
	△	BLACK	.058	.600	6	.716	7	1-87175-6	1-87175-5
	△	BLACK	.058	.500	5	.616	6	1-87175-4	1-87175-3
	△	BLACK	.058	.400	4	.516	5	1-87175-2	-
	△	BLACK	.058	.300	3	.416	4	1-87175-0	-
	△	BLACK	.058	.200	2	.316	3	87175-8	-
	△	BLACK	.058	.100	1	.216	2	87175-6	-
	△	BLACK	.058	1.400	14	1.516	15	87175-4	87175-3
	△	BLACK	.054	0	0	.108	1	87175-2	-

THIS DRAWING IS A CONTROLLED DOCUMENT. DWN D KEITZER 11-16-89
 DWK S. BEAM 11-29-89
 S. BEAM 11-29-89

STE TE Connectivity

HOUSING-LOCKING CLIP .025 SQ. POST, .100 CENTERS (CLOSE END) SINGLE ROW

108-36028
 114-25006

SIZE: A1 CAGE CODE: 00779 DRAWING NO: 87175
 WEIGHT: CUSTOMER DRAWING

SCALE: 4:1 SHEET: 1 OF 1 REV: V